



# MIKUNI CARBURETORS

## HI-PERFORMANCE SUPER BN

Extended Throttle Shaft Without Choke Shaft



**38MM**  
 Part # **53-2050**  
 Mikuni # **BN38-34-8113**



**44MM**  
 Part # **53-2060S**  
 Mikuni # **BN44-40-8067**



**44MM**  
 Part # **53-2060**  
 Mikuni # **BN44-40-8052**



**46MM**  
 Part # **53-2065**  
 Mikuni # **BN46-42-8002**



# OEM REPLACEMENT SUPER BN

## Regular Throttle Shaft With Choke Shaft

\*\*\* Direct replacement of OEM Carburetors at a fraction of OEM cost. \*\*\*

**MAG-SIDE**



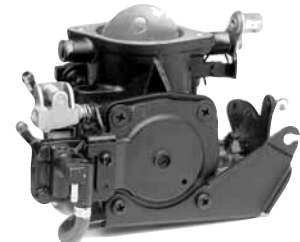
**40MM - I-SERIES**

**MAG-SIDE (FRONT)**  
 Part # **53-2085** Mikuni # **BN40I-38-26**

**PTO-SIDE (REAR)**  
 Part # **53-2090** Mikuni # **BN40I-38-27**

**Sea Doo 720 GTI, GTS, GS, GSI '98, 800 GTX, GSX '96-'00, 800 SPX 97-99, 800 XP '95-'99, 951 GSX LTD '97**

**PTO-SIDE**



**38MM**  
 Part # **53-2063**  
 Mikuni # **BN34-28-8010**  
**Yamaha**  
 Wave Runner 500 88-89  
 Wave Jammer 500 88-89



**44MM - I-SERIES**  
 Part # **53-2080**  
 Mikuni # **BN40I-38-24**

**Sea Doo 720, GTI, GTS, GS, GSI, '97**



**44MM**  
 Part # **53-2062**  
 Mikuni # **BN44-40-43**  
**Yamaha Superjet, Wave Blaster, Tigershark**

## DUAL CARBURETOR SET

**46MM - I-SERIES**

Part # **53-2095**  
 Mikuni # **BN46I-42-B4**  
**Sea Doo 951 - GSX, GTX, XP-LTD, '98-01, XP'00, RX, LRV**

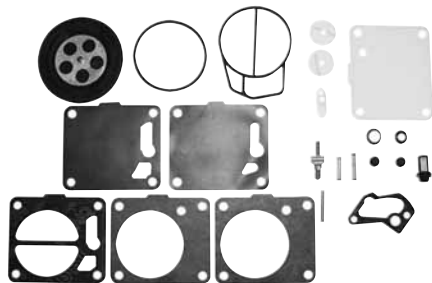
*Note: Sold as a fully assembled dual carburetor set.*





# GENUINE CARBURETOR REBUILD KITS

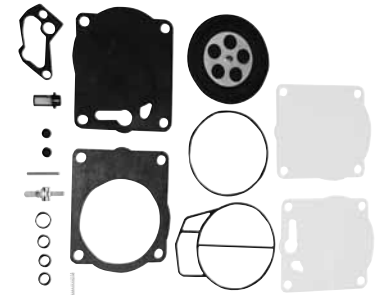
Kits include all necessary gaskets, diaphragms, and hardware required to disassemble and rebuild Mikuni carburetor.



Kit Includes Mikuni Arm Springs (1 each - 65gm & 115gm)

Mikuni	Diaphragm Cover	Part No.
Super BN 38mm, 44mm, 46mm (I Series 38/40)	Square	53-2114

\*Sea Doo Pre 97, Kawasaki 750 98-02, 800 SX-R 03-08 and ALL Mikuni Performance Super BN Square Body 38mm, 44mm and 46mm carbs



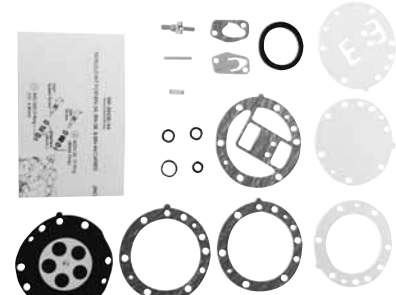
Kit Includes Mikuni Arm Spring (1 spring - 95gm)

Mikuni	Diaphragm Cover	Part No.
I Series 46mm *Sea Doo 951 (98 and newer)	Square	53-2115



Kit Includes Mikuni Arm Spring (1 spring - 95gm)

Mikuni	Diaphragm Cover	Part No.
I Series 44mm/46mm *Yamaha GP800 98-99, GP 800R 00-05, XL 800 01, XLT 800 02-04, GP 1200R 00-02, XL1200 Limited 99-00 and XLT 1200 01-05 Yamaha Engine Type 60T, 66E, 66V, 67X, 68N	Square	53-2117



Kit Includes Mikuni Arm Spring (1 spring - 95gm)

Mikuni	Diaphragm Cover	Part No.
BN 38mm, 44mm *BN carbs are "Old Style/Round Body" with round diaphragm covers	Round	53-2110

## MIKUNI SUPER BN SPECIFICATIONS

Hot Products Part #	Carb.	Low Speed Jet	High Speed Jet	Needle Valve	Arm Spring (grams)	Low Speed Adjuster	High Speed Adjuster	Choke or Primer	Color
53-2050	BN38-34-8113	65	107.5	2.0	115 gr.	1.0	1.5	Primer	Silver
53-2060	BN44-40-8052	100	125	2.3	65 gr.	1.0	1.5	Primer	Black
53-2060S	BN44-40-8067	120	140	2.5	80 gr.	1.0	1.5	Primer	Silver
53-2065	BN46-42-8002	120	150	2.5	80 gr.	1.0	1.5	Primer	Silver
53-2062	BN44-40-43	120	115	1.5	115 gr.	1.0	.75	Choke	Black
53-2063	BN34-28-8010	77.5	80	1.5	65 gr.			Choke	Black
53-2080	BN40I-38-24	70	167.5	1.5	95 gr.	1.25	closed	Choke	Black
53-2085	BN40I-38-26	67.5	140	1.5	95 gr.	1.25	closed	Choke	Black
53-2090	BN40I-38-27	67.5	142.5	1.5	95 gr.	1.25	closed	Choke	Black
53-2095	BN46I-42-B4	77.5	162.5	2.0	95 gr.	1.25	closed	Choke	Black

FOUR STROKE  
INTAKE SYSTEMS  
ENGINE/GASKETS  
EXHAUST  
DRIVE LINE HANDLING  
ELECTRICAL  
WATERLINE /BILGE  
STEERING & CONTROLS  
BODY  
ACCESSORIES SERVICE TOOLS /HARDWARE  
CHEMICAL



# SUPER BN38 / BN44 / BN46

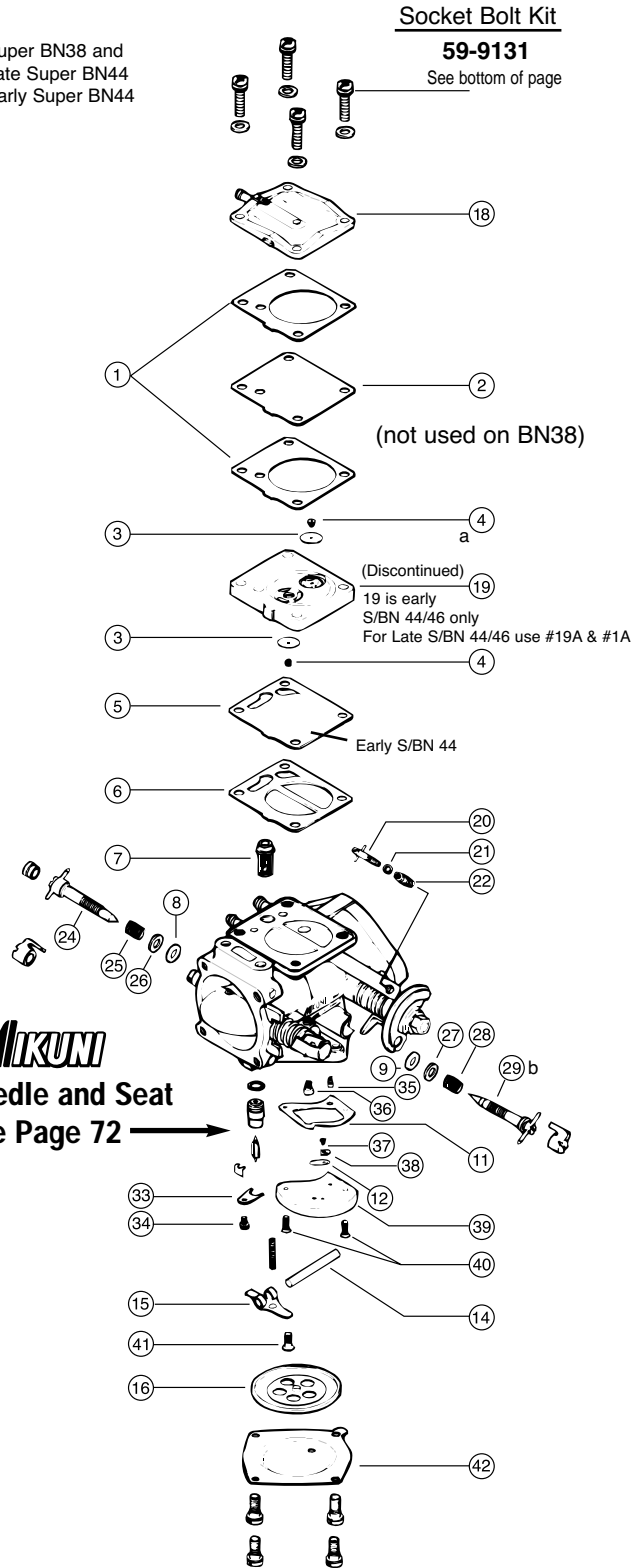
## MIKUNI GENUINE PARTS

Diagram No.	Description	Mikuni Part No.
1.	Gasket Pump (2)	BN38/547
1a.	O-Ring*	.616-72001
2.	Diaphragm, Pump (Clear)	BN34/97
3.	Check Valve (2) (Clear)	BN34/124
4.	Grommet, Check Valve (2)	BN34/125
5.	Diaphragm, Damper (large hole)**	BN34/100
5a.	Diaphragm, Damper (small hole)*	BN34/129
6.	Gasket, Damper**	BN34/101
6a.	O-Ring*	.616-92007
7.	Filter	BN44/146
8.	O-Ring, Hi Speed	B30/305
9.	O-Ring, Low Speed	MD12/16
11.	Gasket Valve Body	BN34/123
12.	Check Valve (Clear)	BN34/107
14.	Pin, Arm	VM30/97
15.	Arm (Stainless)	BN38/534
16.	Diaphragm Assembly	BN44/145
18.	Cover Pump	BN34/95B
19a.	Body Assembly Pump* (Must use w/O-Ring 1A)	BN34/128
20.	Stop Screw, Idle**	BN44/109
20a.	Stop Screw, Idle*	BN34/82
21.	Washer (Aluminum - Same as #26)	BN38/39
22.	Spring, Idle**	BN38/341
22a.	Spring, Idle (Same as #25)*	BN38/344
24.	Adjuster, Hi Speed (with Cross Bar)	BN44/167
25.	Spring, Hi Speed (Same as #22a)	BN38/344
26.	Washer, Hi Speed (Aluminum - Same as #21)	BN38/39
27.	Washer, Low Speed (Aluminum)	BN38/172
28.	Spring, Low Speed	BN38/343
29a.	Adjuster, Low Speed (with Cross Bar) 38mm	BN38/477
29b.	Adjuster, Low Speed (with Cross Bar) 44mm	BN38/166
33.	Plate, N.V. Retainer	BN34/117-GG
34.	Screw with washer	CW2-0307-G
35.	Low Jet, 30-160 in increments of 5 (See page 72)	N100.606-SIZE
36.	Main Jet, 30-260 in increments of 5 (See page 72)	N102.221-SIZE
37.	Screw	BV15/121-05-GG
38.	Plate, Valve	BN34/108-GG
39.	Valve Body Assembly	BN44/165
40.	Screw (2 pcs)	C5-0414-G
41.	Screw	C6-0308-G
42.	Cover (Stainless)	BN44/147

\* Super BN38 and Late Super BN44  
 \*\* Early Super BN44

Socket Bolt Kit  
**59-9131**  
 See bottom of page

\* Super BN38 and Late Super BN44  
 \*\* Early Super BN44



**MIKUNI**  
 Needle and Seat  
 See Page 72

## CARBURETOR SOCKET BOLT KIT

Replace the stock phillips bolts on carbs with stainless steel socket head bolts.



## SUPER BN CARBURETOR TUNING MANUAL

For the watercraft tuner working with Super BN series carburetors.

Description	Part No.
Mikuni Manual	53-9999

Description	Part No.
Mikuni Super BN	59-9131



FOUR STROKE

INTAKE SYSTEMS

ENGINE/GASKETS

EXHAUST

DRIVE LINE HANDLING

ELECTRICAL

WATERLINE /BILGE

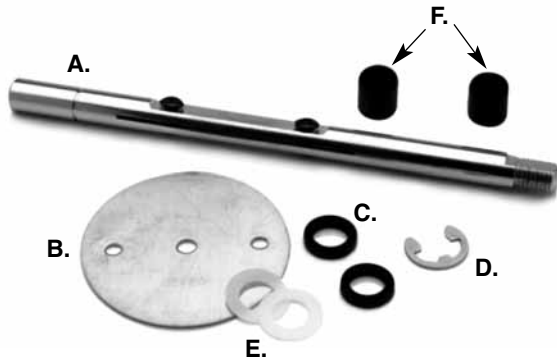
STEERING & CONTROLS

BODY

SERVICE TOOLS ACCESSORIES

HARDWARE

CHEMICAL



### THROTTLE VALVE KIT

Description	Part No.
Throttle valve (#120) kit for 44mm	MK-BN/044 TV
Throttle valve (#120) kit for 46mm	MK-BN/046 TV
Throttle valve (#150) kit for 38mm	MK-BN/038 TV

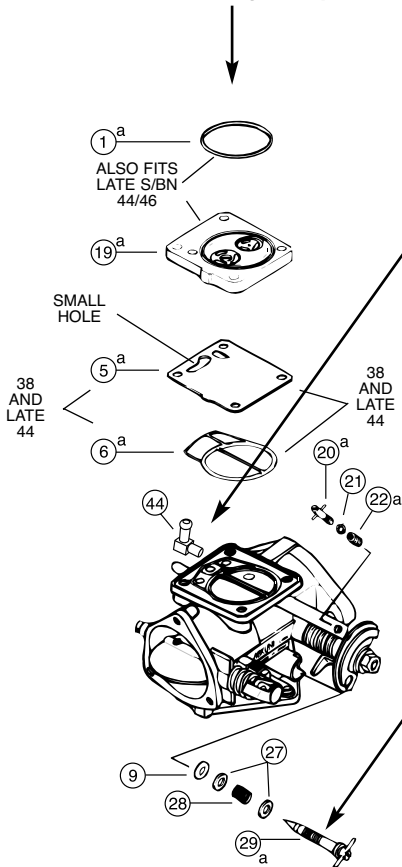
### THROTTLE SHAFTS AND VALVES (ALL PARTS SOLD INDIVIDUALLY - PER PIECE)

Description	Part No.
A.Super BN 44mm Throttle Shaft (Extended)	703-89004
B.Super BN 44mm #120 Throttle Valve	BN44/06-120
B.Super BN 46mm #120 Throttle Valve	818-46009-120
C.Super BN 38/44/46mm Throttle Shaft Seal	N167.126
D.Super BN 38/44/46mm Throttle Shaft Clip (Standard)	BN38/566
D.Super BN 38/44/46mm Throttle Shaft Clip (Heavy Duty)	MK-BN/005
E.Super BN 38/44/46mm Throttle Shaft Washer (Nylon)	N114.077
F.Super BN 38/44/46mm Throttle Shaft Bushing	BN38/569

*All parts sold individually - per piece*

### Super BN 38

Also used in late style Super BN 44



### 90° FUEL INLET FITTING (PRESS IN)

Description	Diag. #	Part No.
90° Fuel Inlet Fitting	44	DF44-2/70

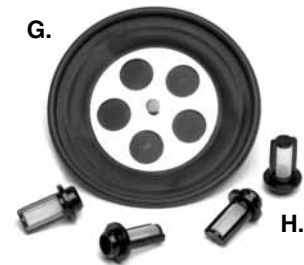
*All parts sold individually - per piece*



### ADJUSTER WITH CROSS BAR

Description	Diag. #	Part No.
High Speed 38/44	24	BN44/167
Low Speed 38	29a	BN38/477
Low Speed 44	29b	BN38/166

(Does not fit Yam OEM 44mm carb)



### DIAPHRAGM AND FILTER

Description	Diag. #	Part No.
G. Diaphragm Assembly	16.	BN44/145
H. Super BN Filter	7.	BN44/146

*All parts sold individually - per piece*



### ULTIMATE CARB GASKETS

Thick "Green" gaskets.

Mikuni	Part No.
38mm	9230
40mm "I" Series	9235
44mm	9240
46mm	9250
48mm	9252
50mm	9257
48mm SD951 I Series	6740

FOUR STROKE  
INTAKE SYSTEMS  
ENGINE/GASKETS  
EXHAUST  
DRIVE LINE HANDLING  
ELECTRICAL  
WATERLINE /BILGE  
STEERING & CONTROLS  
BODY  
ACCESSORIES  
SERVICE TOOLS /HARDWARE  
CHEMICAL



## GENUINE MIKUNI CARB COMPARTMENT KIT



**PARTS STAMPING** This marking on a jetting part is your quality assurance guarantee it is a genuine Mikuni component. **DO NOT ACCEPT SUBSTITUTES.**



### Description

### Part No.

<b>Dealer Standard</b> Compartment Kit*	<b>53-2120</b>
<b>Performance</b> Compartment Kit	<b>53-2121</b>
Compartment only	<b>53-2122</b>

### Dealer Compartment Kit contents:

- 4 Each of Needle and Seat**  
1.5/2.0/2.3/2.5
- 4 Each of Arm Spring**  
65/80/95/115gm
- 5 Each of Low Jets**  
67.5/70/72.5/75/77.5/87.5/90/92.5  
95/97.5/100/102.5/105/107.5/110
- 5 Each of Main Jets**  
105/110/115/120/125/130/135/140  
145/150/155/160

### Performance Compartment Kit contents:

- 4 Each of Needle and Seat**  
2.0/2.3/2.5
- 4 Each of Arm Spring**  
80/95/115gm
- 5 Each of Low Jets**  
105/110/115/120/125/130/135/140  
145/150/155/160
- 5 Each of Main Jets**  
135/140/145/150/155/160/165/170  
175/180/185/190

### CARBURETOR JETS

### CARBURETOR JETS

Mikuni Low Jets P/# (N100.606-size)		Mikuni Main Jets P/# (N102.221-size)		
Size:		30	95	160
32.5	97.5	32.5	97.5	162.5
35	100	35	100	165
37.5	102.5	37.5	102.5	167.5
40	105	40	105	170
42.5	107.5	42.5	107.5	172.5
45	110	45	110	175
47.5	112.5	47.5	112.5	177.5
50	115	50	115	180
52.5	117.5	52.5	117.5	182.5
55	120	55	120	185
57.5	122.5	57.5	122.5	187.5
60	125	60	125	190
62.5	127.5	62.5	127.5	195
65	130	65	130	200
67.5	132.5	67.5	132.5	205
70	135	70	135	210
72.5	137.5	72.5	137.5	215
75	140	75	140	220
77.5	142.5	77.5	142.5	230
80	145	80	145	240
82.5	147.5	82.5	147.5	
85	150	85	150	
87.5	155	87.5	152.5	
90	160	90	155	
92.5		92.5	157.5	

## OLD TYPE NEEDLES & SEATS

### ROUND DIAPHRAGM COVER STANDARD BN

### OLD TYPE, STANDARD METAL TIP

— Screw in Type —



Description	Part No.
1.5	<b>VM26/26-1.5</b>
2.0	<b>VM26/26-2.0</b>
2.3	<b>VM26/26-2.3</b>
2.5	<b>VM26/26-2.5</b>
2.8	<b>VM26/26-2.8</b>

## NEW TYPE NEEDLES & SEATS

### SQUARE DIAPHRAGM COVER SUPER BN (NEW TYPE)

— Push in Type —



#### VITON TIP

*Recommended for Gas Fuel Applications*

Description	Part No.
1.2	—
1.5	<b>786-35015-1.5</b>
1.8	<b>786-35015-1.8</b>
2.0	<b>786-35015-2.0</b>
2.3	<b>786-35015-2.3</b>
2.5	<b>786-35015-2.5</b>

#### STANDARD METAL TIP

*Recommended for Alcohol Fuel Applications*

Description	Part No.
1.2	<b>786-35018-1.2</b>
1.5	<b>786-35018-1.5</b>
1.8	<b>786-35018-1.8</b>
2.0	<b>786-35018-2.0</b>
2.3	<b>786-35018-2.3</b>
2.5	<b>786-35018-2.5</b>

## MIKUNI ARM SPRINGS

Description	Part No.	Mikuni No.
65gm	<b>53-2614</b>	<b>730-03030</b>
80gm	<b>53-2613</b>	<b>730-03033</b>
95gm*	<b>53-2615</b>	<b>730-03034</b>
<i>*This 95gm spring is for Sea Doo BN 46l Carbs Only!</i>		
95gm	<b>53-2612</b>	<b>730-03027-T</b>
115gm	<b>53-2611</b>	<b>730-03027</b>

## POP-OFF PRESSURE CHART

Part No.	53-2611	53-2612	53-2613	53-2614
Arm Springs	115 grams	95 grams	80 grams	65 grams
Needle Valve Size	1.5	55 p.s.i.	43 p.s.i.	38 p.s.i.
	2.0	32 p.s.i.	25 p.s.i.	21 p.s.i.
	2.3	22 p.s.i.	20 p.s.i.	17 p.s.i.
	2.5	19 p.s.i.	17 p.s.i.	14 p.s.i.
Color	Platinum*	Dull Silver	Black	Shiny Silver

\*The new color "platinum" color is due to increasing emission regulations in Japan. The new treatment process of the springs creates the new color.



# MIKUNI GENUINE PARTS SUPER BN 46 "I"



## SUPER BN 46 "I" TYPE CARB

Diagram No.	Description	Mikuni Part No.
4.	Grommet, Check Valve (2)	BN34/125
7.	Filter	BN44/146
8.	O-Ring, Hi Speed (2)	B30/305
9.	O-Ring, Low Speed (2)	MD12/16
11.	Gasket Valve Body	BN34/123
12.	Check Valve (Clear)	BN34/107
14.	Pin, Arm	VM30/97
15.	Arm (Stainless)	BN38/534
16.	Diaphragm Assembly	BN44/145
61.	Gasket, Pump	BN46I/13
62.	Diaphragm, Pump (Clear)	BN46I/14
63.	O-Ring	616-73002
64.	Check Valve (2)	BN46I/11
66.	Diaphragm, Damper	BN46I/34
67.	Diaphragm, Damper (clear)	BN46I/15
68.	O-Ring	616-73003
69.	O-Ring, Needle Valve	KV/10

### 53-2115 BN46 I Rebuild Kit

21.	Washer, Aluminum (3)	BN38/39
25.	Spring (2)	BN38/344
27.	Washer, Aluminum (2)	BN38/172
28.	Spring, Low Speed	BN38/343
29b.	Adjuster, Low Speed	BN38/166
33.	Plate, Needle Valve Retainer	BN34/177-GG
34.	Screw with Washer	CW2-0307-G
37.	Screw	BV15/121-05-GG
38.	Plate, Valve	BN34/108-GG
39.	Valve Body Assembly	BN44/165
40.	Screw (2)	C5-0414-G
41.	Screw	C6-0308-G
42.	Cover (Stainless)	BN44/147
70.	Screw with 2 Washers (4)	BN34/120-35
73.	Stop Screw, Idle	BN38I/40
76.	Screw (4)	C2S=0514
77.	Diaphragm, Accelerator. Pump	BN40I/22
79.	Body Assembly, Pump	BN46I/49



### ADJUSTER WITH CROSS BAR

This allows simple tuning adjustments, which is not possible with oem screw.

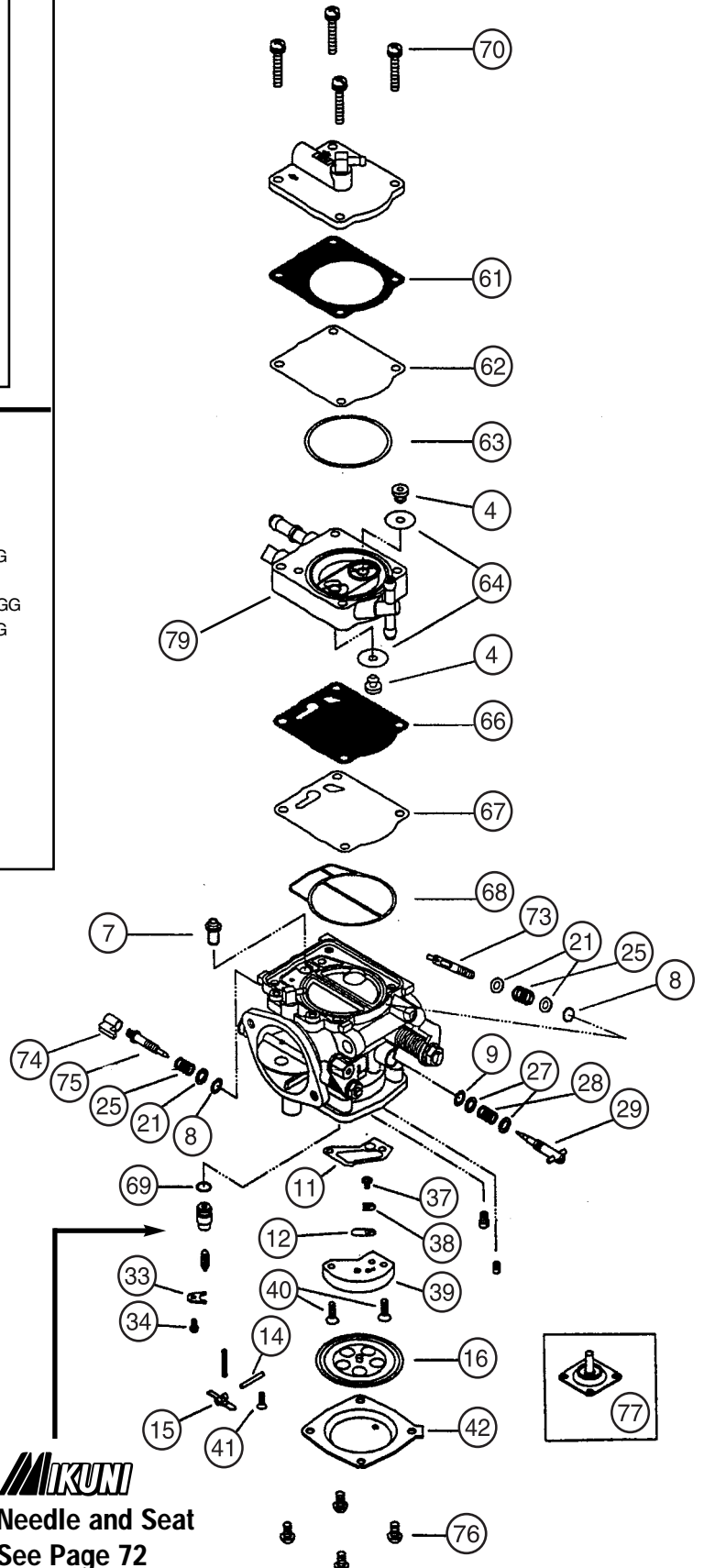
"I" series 44/46, OEM Yam GP800 & SD 951	Part No.
High Speed cross bar screw	SA-100

OEM Yamaha Carb, XL1200LTD, XLT1200, GP1200R	Part No.
Low Speed cross bar screw	SA-200
High Speed cross bar screw	SA-300

OEM Kawasaki Carb, Kawasaki 800SX-R	Part No.
Low Speed cross bar screw	SA-500
High Speed cross bar screw	SA-100

OEM Yamaha Carb, Superjet 2004+	Part No.
Low Speed cross bar screw*	SA-700
High Speed cross bar screw*	SA-800

\*Choke must be removed to install SA-700 and SA-800



Needle and Seat  
See Page 72

For Yamaha GPR Repair Kit, see page 74.

FOUR STROKE
INTAKE SYSTEMS
ENGINE/ GASKETS
EXHAUST
DRIVE LINE HANDLING
ELECTRICAL
WATERLINE /BILGE
STEERING & CONTROLS
BODY
ACCESSORIES SERVICE TOOLS /HARDWARE
CHEMICAL

# SUPER BN 44I/46I FOR YAMAHA

Rebuild kit for one Super BN44I or BN 46I carburetor.



**FITS ONLY:** Yamaha Watercraft engine with Power Valve System (Type 60T, 66E, 66V, 67X, 68N)

FOUR STROKE  
INTAKE SYSTEMS  
ENGINE/GASKETS  
EXHAUST  
DRIVE LINE HANDLING  
ELECTRICAL  
WATERLINE /BILGE  
STEERING & CONTROLS  
BODY  
SERVICE TOOLS ACCESSORIES /HARDWARE  
CHEMICAL

Diagram No.	Description	Mikuni Part No.
1.	Gasket, Pump	BN46I/13
2.	Diaphragm, Pump (Clear)	BN46I/14
3.	O-Ring	616-92014
4.	Check Valve (2 pcs)	999-815-071
5.	Grommet (2 pcs)	BN34/125
6.	Diaphragm, Damper	BN46I/34
7.	Diaphragm, Damper (clear)	BN46I/15
8.	O-Ring	616-92015
9.	Filter, Fuel	BN44/146
10.	O-Ring, High Speed	BN21/156
11.	O-Ring, Low Speed	BN21/156
12.	O-Ring, Needle Valve	KV/10
13.	Gasket, Valve Body	BN34/123
14.	Check Valve (clear)	BN34/107
15.	Pin, Arm	VM30/97
16.	Spring, Arm 115 gram	730-03027
17.	Arm (Stainless)	BN38/534
18.	Diaphragm Assembly, Main	BN44/145
39.	Screw	C6=0308-G

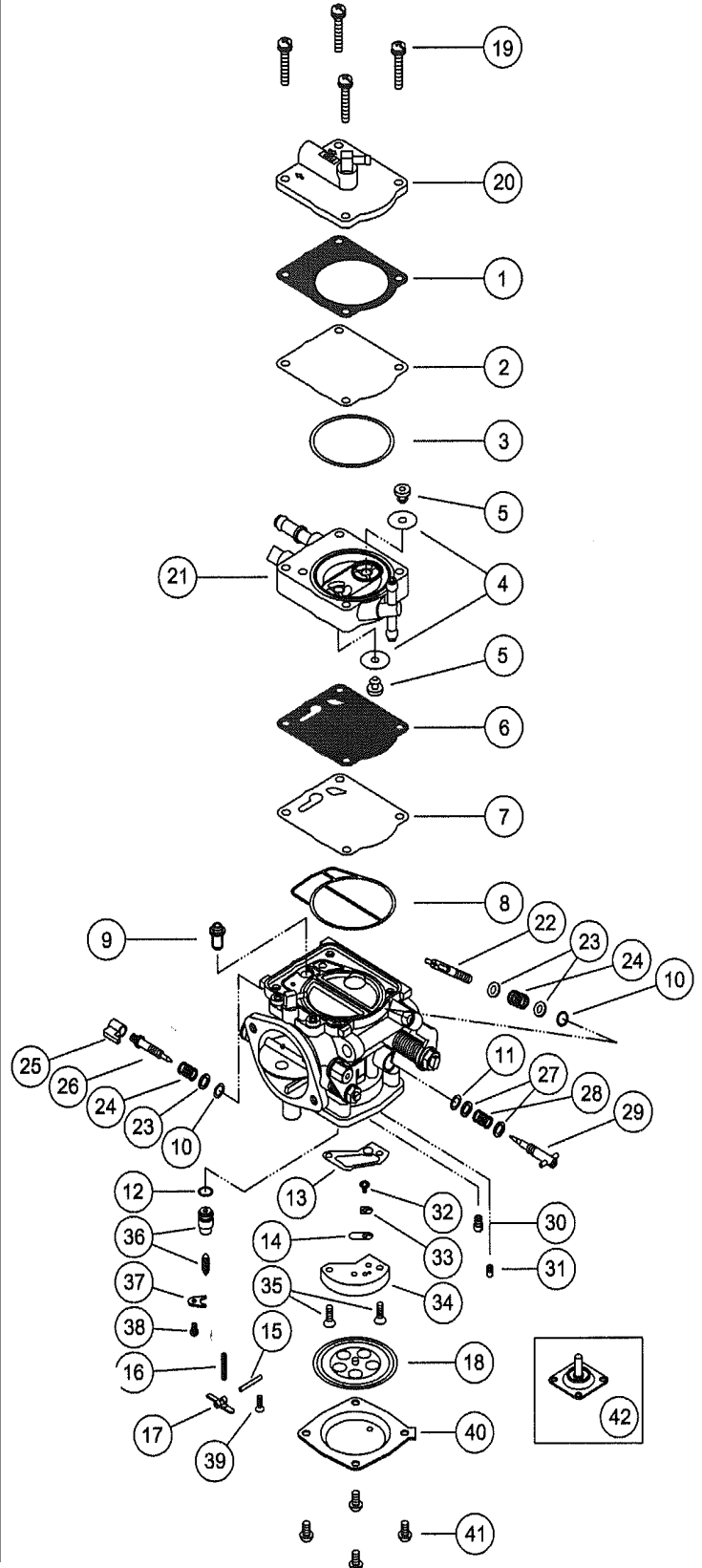
53-2117 Yamaha S/BN 44/46I

## BN44I/BN46I REPLACEMENT PARTS

- 19. Screw with 2 Washers (4)\*\* ..... BN34/120-35
- 20. Cover, Pump ..... BN46I/35
- 21. Body Assembly, Pump ..... BN46I/49
- 22. Stop Screw, Idle ..... BN38I/40
- 23. Washer, Aluminum (3) ..... BN38/39
- 24. Spring (2) ..... BN38/344
- 25. Cap, High Speed Adjuster ..... BN44/118
- 26. Adjuster, High Speed ..... 604-25017
- 27. Washer, Aluminum (2) ..... BN38/172
- 28. Spring, Low Speed ..... BN38/343
- 29. Adjuster, Low Speed ..... BN38/477
- 30. Jet, High Speed ..... N102.221-size
- 31. Jet, Low Speed ..... N100.606-size
- 32. Screw ..... BV15/121-05-GG
- 33. Plate, Valve ..... BN34/108-GG
- 34. Valve, Body Assembly ..... BN44/165
- 35. Screw (2) ..... C5=0414-G
- 36. **Needle Valve Assembly** ..... **SEE PAGE 74**
- 37. Plate, Needle Valve Retainer ..... BN34/117-GG
- 38. Screw w/Washer ..... CW2=0307-G
- 39. Screw ..... C6=0308-G
- 40. Cover, (stainless, unpainted) ..... BN44/147
- 41. Screw (4)\*\* ..... C2S=0514
- 42. Diaphragm, Accelerator Pump ..... BN40I/22

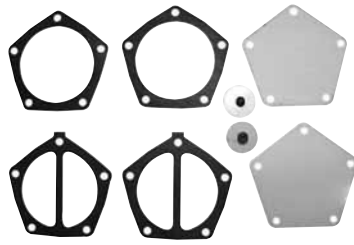
\*\*Tightening Torque:  
Part No. 19: 4.5 N·m (45 kg·cm)  
Part No. 42: 3.5 N·m (35 kg·cm)

Note: DO NOT use gasket sealant during assembly.





53-3328



53-3328RP

## MIKUNI HIGH VOLUME FUEL PUMP

16 gallons/61 Liters per hour

Description	Part No.
Mikuni Fuel Pump	53-3328
Mikuni Fuel Pump Repair Kit	53-3328RP



M-VM40-200K

1-VM44-200-1

## SPIGOT MOUNT FLANGE FOR MIKUNI CARBURETOR

For easier removal and installation of carburetor for jetting and maintenance. Recommended to use with side draft manifold only.

Description	Part No.
Spigot Mount Flange (Silver Band)	M-VM40-200K
Spigot Mount Flange Sea Doo 951 (Black Band)	I-VM44-200-1



\*\*Fuel pump is not included

## BLOWSION CARBON FIBER REMOTE FUEL PUMP BRACKET

Use this ultra sano 100% carbon fiber fuel pump bracket when adding remote fuel pumps. Lightweight and burly, this is the key to your mounting problems without adding weight or stress to the engine compartment.

Description	Part No.
Fuel Pump Bracket	01-02-556



## MIKUNI FUEL PUMP BLOCK OFF

Block off plates sold individually, one block off plate only, no bolts are included with the block off plate. Sold each.

Description	Part No.
Mikuni Fuel Pump Block Off	53-3330



## BLOWSION FUEL PUMP BLOCK OFF

New for 2009 Blowsion has created these sanitary anodized and engraved Blowsion logo carb block offs. A necessity when using a remote fuel pump. Fits all Mikuni carbs. Billet aluminum and includes all stainless hardware.

Description	Part No.
Blowsion Mikuni Fuel Pump Block Off	01-02-557

## MIKUNI POP-OFF GAUGE

For Accurate adjustment of pop off pressure levels for fine tuning requirements.

Description	Part No.
Mikuni 30 Lbs. Guage	53-9996
Mikuni 60 Lbs. Guage	53-9996-60
Mikuni 100 Lbs. Guage	53-9996-100



## MIKUNI POCKET TUNER

A handy pocket-size slide calculator which can be used to determine required jetting changes in Mikuni carburetors due to ambient temperature, altitude or both.

Description	Part No.
Mikuni Pocket Tuner	53-9988



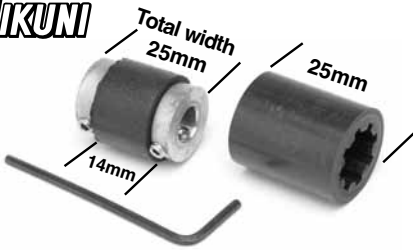
## MIKUNI TOOL KIT

This handy little kit contains all the tools necessary to make jetting change, perform normal maintenance as well as disassemble and rebuild any Mikuni carburetor.

Description	Part No.
Mikuni Tool Kit	53-9989

FOUR STROKE  
INTAKE SYSTEMS  
ENGINE/GASKETS  
EXHAUST  
DRIVE LINE HANDLING  
ELECTRICAL  
WATERLINE /BILGE  
STEERING & CONTROLS  
BODY  
ACCESSORIES  
SERVICE TOOLS /HARDWARE  
CHEMICAL





### MIKUNI DUAL CARBURETORS LINKAGE KIT

The Mikuni Dual linkage kit includes all items as pictured: One complete linkage, one allen wrench and one 25mm dampner for wider applications.

Description	Part No.
Mikuni Dual Linkage Kit	MK-BN/001



### CARBURETORS LINKAGE

Linkage Kit	Part No.
Mikuni Carburetor Linkage	53-0622



### CARBURETORS LINKAGE SLEEVES

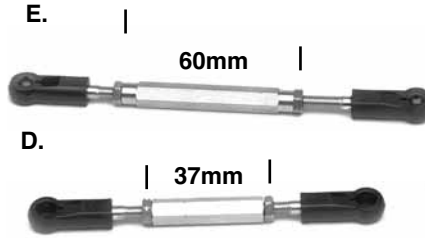
Sleeve Only		Part No.
5/8"	16mm	53-9905
3/4"	19mm	53-9906
1"	25mm	53-9916
2-3/16"	56mm	53-9917
6"	152mm	53-9918



### JETWORKS LINKAGE

Using 120mm center to center aftermarket dual S/BN carburetor applications. It is made to have zero backlashes and will not compress after age.

Description	Part No.
120 mm center to center	LK-2



### MIKUNI GENUINE OEM STYLE LINKAGE RODS

Description	Part No.
D. Sea Doo XP800	53-0615
E. Sea Doo 951	53-0616



### JET WORKS 48MM BUTTERFLY

Description	Part No.
Jet Works 48mm Butterfly	48-012

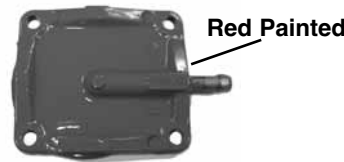
*\*No butterfly screws are included.*

## MISCELLANEOUS HARDWARE FOR CARBURETORS

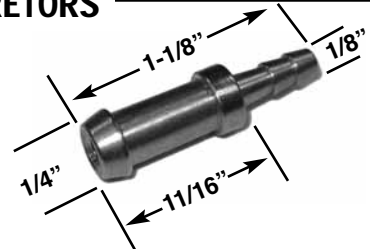
All Items are Sold Individually



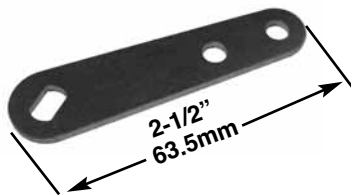
Description	Part No.
Linkage Rod End	BN 38/576



Description	Part No.
Mikuni Pump Side Cover - Red Color	BN 34/95B-Red



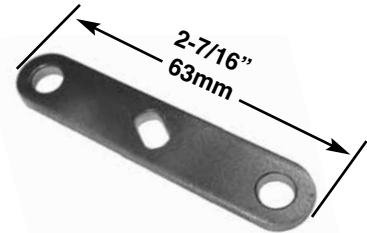
Description	Part No.
Press-in Nipple 1/4"-1/8"	53-9935



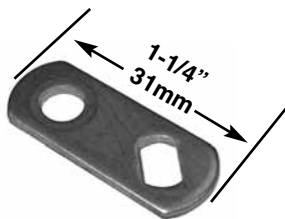
Description	Part No.
Throttle Linkage Arm	53-0610



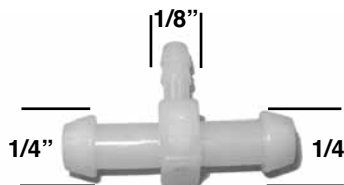
Description	Part No.
Throttle Linkage Arm	53-0607



Description	Part No.
Throttle Linkage Arm	53-0608



Description	Part No.
Throttle Arm	53-0609

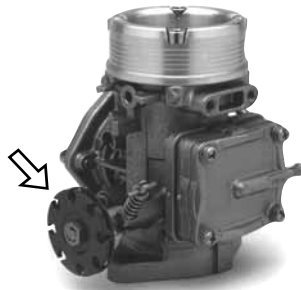


Description	Part No.
Plastic T Fitting 1/4"-1/4" 1/8"	64-0095



Description	Part No.
6m x 25mm Metric Stud	62-3025

# THROTTLE CABLE DRUM FOR MIKUNI



Hot Products original billet throttle drum for Mikuni carburetors allows the use of any throttle cable and bracket on Mikuni carburetors. 9 positions, 18mm throw.

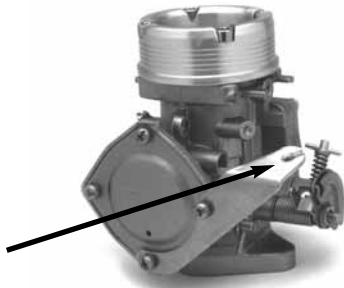
PJS Drums features a center web thin enough to allow use of nut with lock washer. "D" slot match the throttle shaft for a perfect fit. 12 positions and available in 20mm or 25mm throws

Description	Part No.
Hot Products Cable Drum 18mm Throw	53-2622

Description	Part No.
Standard Size (20mm throw)	53-2625
Oversized (25mm throw) For Oil injection and stock carburetors of Yamaha GP/XL	53-2627



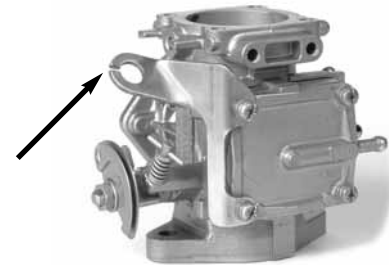
# THROTTLE CABLE BRACKETS FOR MIKUNI



## DIAPHRAGM COVER MOUNT THROTTLE CABLE BRACKET

Recommend for use with Hot Products Cable Drum Part #53-2622

Description	Part No.
Cable Mount Diameter 10mm	290-00200



**Kawasaki / Polaris / Tigershark**  
Recommend for use with Hot Products Cable Drum Part #53-2622

Description	Part No.
Cable Mount Diameter 10mm	53-3317



## MOTOINE SOFT SPRING FOR MIKUNI CARBS

New Motoine Mikuni spring is 2/3 softer than original spring and reduces thumb and/or finger throttle fatigue.

Description	Part No.
Motoine Soft Spring	MR-00013



## ADA RACING CABLE BRACKET FOR OEM CARBS

Kawasaki 750/800 throttle cable/choke cable bracket. For use with stock carbs when using the ADA Racing billet girdle head kit. This bracket has the throttle cable mount moved up, so it does not interfere with the girdle bracket.

Description	Part No.
ADA Bracket	KA800BRK-CARB



## RIVA RACING DIAPHRAGM COVER MOUNT THROTTLE CABLE BRACKET

Recommend for use with Hot Products Cable Drum Part #53-2622

Description	Part No.
Cable Mount Diameter 8mm	RY12-TCB

FOUR STROKE	INTAKE SYSTEMS	ENGINE/GASKETS	EXHAUST	DRIVE LINE HANDLING	ELECTRICAL	WATERLINE /BILGE	STEERING & CONTROLS	BODY	ACCESSORIES	SERVICE TOOLS /HARDWARE	CHEMICAL
-------------	----------------	----------------	---------	---------------------	------------	------------------	---------------------	------	-------------	-------------------------	----------



### ULTIMATE CARB GASKETS

Thick "Green" gaskets.

Keihin	Part No.
38mm	9200
40mm	9205
42mm	9220



### CARB SCREW ADJUSTING TOOL

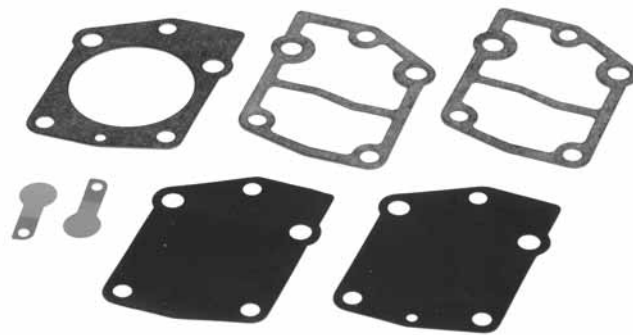
A special 90-degree screwdriver, designed to adjust carburetors of triple-cylinder watercraft.

Description	Part No.
Carb Screw Adjusting Tool	53-9994



### CARBURETOR JETS

Keihin Low Jets		Keihin Main Jets	Keihin Main Jets	
P/# (N424-35-size)		P/# (N424-27-size)	P/# (N424-36-size)	
40	88	150	100	148
42	90	155	102	150
45	92	160	105	152
48	95	165	108	155
50	98	170	110	158
52	100	175	112	160
55	102	180	115	162
58	105	185	118	165
60	108	190	120	168
62	110	195	122	170
65	112	200	125	172
68	115	(for CDCV)	128	175
70	118		130	178
72	120		132	180
75			135	182
78			138	185
80			140	190
82			142	195
85			145	200



### KEIHIN FUEL PUMP REBUILD KIT

Includes all parts necessary to rebuild the Keihin fuel pump. Fits Kawasaki 650SX 1986-91, 650X2 1989-91.

Description	Part No.
Keihin Fuel Pump Rebuild Kit	53-2105

### KEIHIN CARBURETOR ADAPTERS FOR MIKUNI CARBURETOR MANIFOLDS



Description	Part No.
A. This adapter allows mounting of Keihin CDKII 38, 42 carburetor to any popular O.E. or aftermarket 44mm Mikuni intake manifold. <i>*The carb will stand straight up when using this adapter - the carb is just rotated a few degrees to clear the adapter mounting bolts.</i>	53-3305

Description	Part No.
B. This adapter is designed to mount to the Keihin CDKII 38, 42 carburetor at an angle specifically for the Kawasaki JS440/550 piston port engine. <i>*A short air filter is required for to prevent rubbing on the inside of the hood</i>	53-3308

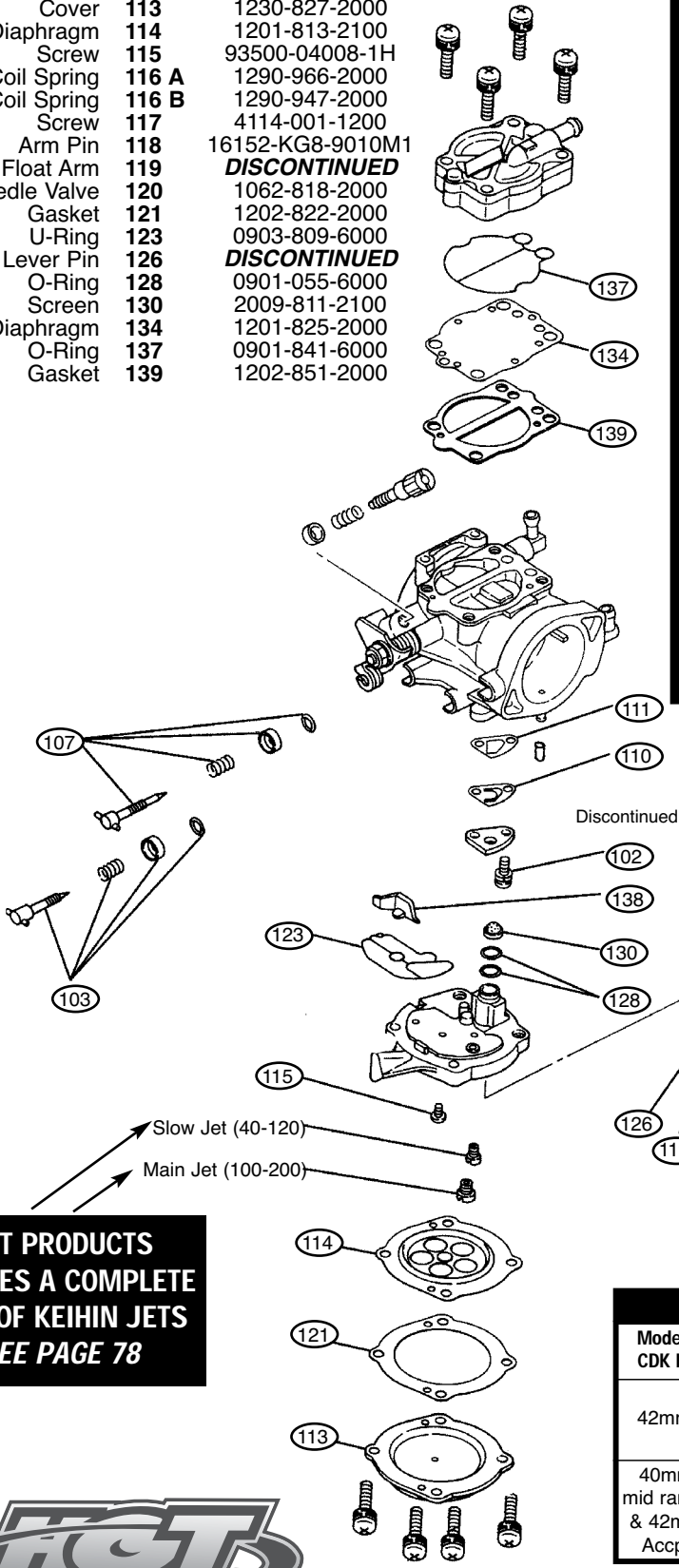


2011 HOT PRODUCTS SPONSORED RACER  
LORENZO "BENNY" BENAGLIA • ITALY

**GENUINE KEIHIN  
CARBURETOR PARTS**



Description	Diagram	Keihin Part No.
Screw	102	N114-03060
Adjust Screw (Main)	103	<b>DISCONTINUED</b>
Adjust Screw (Slow)	107	Z014-0670
Check Valve	110	1242-809-2000
Gasket	111	1202-823-2000
Cover	113	1230-827-2000
Diaphragm	114	1201-813-2100
Screw	115	93500-04008-1H
Coil Spring	116 A	1290-966-2000
Coil Spring	116 B	1290-947-2000
Screw	117	4114-001-1200
Arm Pin	118	16152-KG8-9010M1
Float Arm	119	<b>DISCONTINUED</b>
Needle Valve	120	1062-818-2000
Gasket	121	1202-822-2000
U-Ring	123	0903-809-6000
Lever Pin	126	<b>DISCONTINUED</b>
O-Ring	128	0901-055-6000
Diaphragm	130	2009-811-2100
O-Ring	137	0901-841-6000
Gasket	139	1202-851-2000

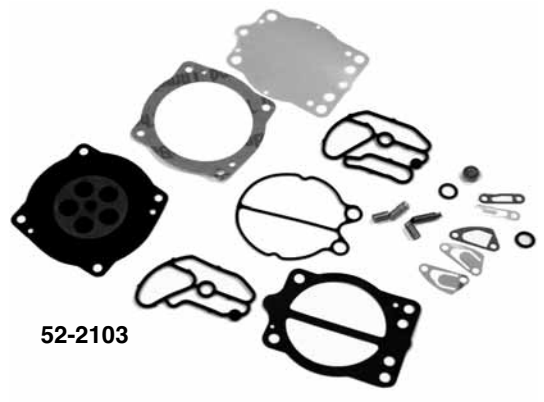


**HOT PRODUCTS  
CARRIES A COMPLETE  
LINE OF KEIHIN JETS  
SEE PAGE 78**



**KEIHIN GENUINE  
CARBURETOR REBUILD KITS**

Kits include all necessary gaskets, diaphragms, and hardware required to disassemble and rebuild Keihin carburetor.



Keihin	Part No.
28mm OEM Type Kawasaki 650 SX 1986-91 & 650 X-2 1986-91	<b>53-2100</b>
38/40mm OEM Type & 42mm CDKII	<b>53-2103</b>
<b>POLARIS</b> • Hurricane 700 96-97, SL/SLT 700 96-97, SLH 700 96-97, SL900 96-97, SL/SLTX 1050 96-00, SLXH 1050 98-99, Genesis 99-00, 1200Pro 00, Virage/TX 00	
<b>KAWASAKI</b> • JS440 91-92, JS550SX 91-95, 650TS 89-96, 650SC 90-95, 750SX 92-95, 750SX1 95, 750SS 92-98, 750XI 93-97, 750XIR 94, 750ST 94-95, 750STS 95-97, 750ZXI 95-98, 900ZXI 95-97, 900STX 97-99, 1100ZXI 96-97	

**KEIHIN COIL SPRINGS**

Description	Part No.
42mm 40 gram	<b>1290-966-2000</b>
42mm 70 gram	<b>1290-947-2000</b>
40mm 40 gram	<b>1290-992-2000</b>
40mm 70 gram	<b>1290-961-2000</b>

POP-OFF PRESSURE CHART						
Model CDK II	Spring Force	Spring Length	Part Number	Needle 1.6(std)	Valve 1.8	Size 2.0
42mm	70gram (std)	11mm	<b>116B</b>	24psi	21psi	18psi
	40gram	9.17mm	<b>116A</b>	15psi	13psi	11psi
40mm mid range & 42mm Accp.	70gram (std)	8.7mm	<b>116D</b>	N/A	N/A	N/A
	40gram	7.4mm	<b>116C</b>	N/A	N/A	N/A

FOUR STROKE  
INTAKE SYSTEMS  
ENGINE/GASKETS  
EXHAUST  
DRIVE LINE HANDLING  
ELECTRICAL  
WATERLINE /BILGE  
STEERING & CONTROLS  
BODY  
ACCESSORIES  
SERVICE TOOLS /HARDWARE  
CHEMICAL

# SINGLE INTAKE MANIFOLDS FOR KAWASAKI & YAMAHA

FITS MIKUNI 44/46MM



**Kawasaki** Part No.  
750 All 53-0827



**Yamaha** Part No.  
701/760 (62T/64X) RY126M

# DUAL INTAKE MANIFOLDS FOR SEA DOO

FITS MIKUNI 44/46MM



R&D

**Sea Doo** Part No.  
580/650/720 53-0923



R&D

**Sea Doo** Part No.  
XP800 Direct Flow 223-80001



R&D

**SEA DOO** Part No.  
951 223-95000

Must use with part number 273-95000  
R&D Stuffers

# DUAL / TRIPLE INTAKE MANIFOLDS FOR KAWASAKI

FITS MIKUNI 44/46MM



**Kawasaki** Part No.  
800SX-R with Billet Carb. Plate for OEM Reed 231-75146  
(Center to center 120mm) *\*Note: This manifold is compatible with Moto Tassanari V-Force 3 Reed Sets based on the Reed Kit is supplied with stuffers that match perfectly to this R&D Manifold intake manifold.*  
Mounting Plate Gasket 12-0010



IMK-002



## BOYESEN EXTREME VELOCITY INTAKE KIT & RAD VALVES

**Kawasaki** Part No.  
800SX-R 03-08, Extreme Velocity Intake Kit\* IMK-002  
Extreme Velocity Intake Manifold Only IM-002  
"EV" RAD Valves Kit (Single Valve) RAD-113  
Replacement RAD Reed for RAD-113 PSR-131A  
Replacement Gasket for RAD-113 IMG-001

\*Kit includes (1) precision cast aluminum intake manifold, (2) "EV" RAD valves, (1) carb adapter plate and all necessary installation hardware.



**Kawasaki** Part No.  
Ultra 150/STX-R Kit 231-15000

\*Use with M-16 reed only

For Mikuni SBN 44, 46 or 48mm Spigot Mount Carb Applications

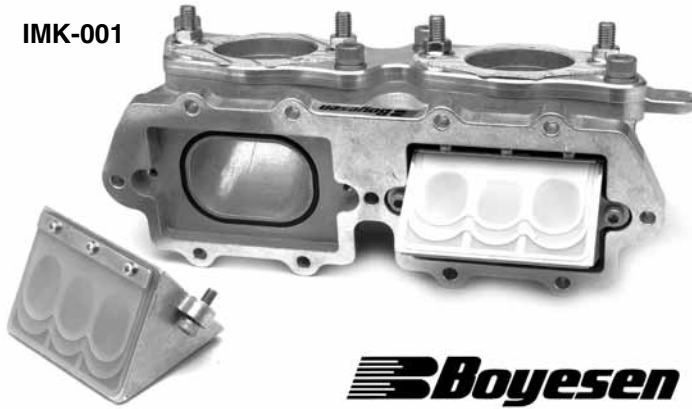
FOUR STROKE  
INTAKE SYSTEMS  
ENGINE/GASKETS  
EXHAUST  
DRIVE LINE HANDLING  
ELECTRICAL  
WATERLINE/BILGE  
STEERING & CONTROLS  
BODY  
ACCESSORIES  
SERVICE TOOLS/HARDWARE  
CHEMICAL

# DUAL / TRIPLE INTAKE MANIFOLDS FOR YAMAHA

FITS MIKUNI 44/46MM

FOUR STROKE  
INTAKE SYSTEMS  
ENGINE/ GASKETS  
EXHAUST  
DRIVE LINE HANDLING  
ELECTRICAL  
WATERLINE /BILGE  
STEERING & CONTROLS  
BODY  
ACCESSORIES  
SERVICE TOOLS /HARDWARE  
CHEMICAL

IMK-001



**BOYESEN EXTREME VELOCITY INTAKE KIT & RAD VALVES**

Yamaha	Part No.
701 Superjet 96-08, Extreme Velocity Intake Kit*	<b>IMK-001</b>
Extreme Velocity Intake Manifold Only	<b>IM-001</b>
"EV" RAD Valves Kit (2 Valves per Kit)	<b>RAD-131A</b>
Replacement RAD Reed for RAD-131A	<b>PSR-131A</b>
Replacement Gasket for RAD-131A	<b>2830</b>
Intake Manifold/Reed Gasket Only	<b>IMG-001</b>



**R&D SUPERJET INLINE INTAKE MANIFOLD KIT**

Yamaha	Part No.
701(62T) W/Rdr/760 With Billet Carb. Plate for <b>OEM Reed</b> (Center to Center 120 mm) <i>*Note: This manifold is compatible with Moto Tassarari V-Force 3 Reed Sets based on the Reed Kit is supplied with stuffers that match perfectly to this R&amp;D Manifold intake manifold.</i>	<b>222-76000</b>
Mounting Plate Gasket	<b>12-0010</b>

## Yamaha Crankcase Application Chart

<b>6M6</b> 650LX, VXR, Wave Runner III, Super Jet 90-93	<b>63M</b> Raider 1100, Venture 1100
<b>61X</b> Pro VXR, Wave Runner III, GP, Super Jet 94-95, Fx-1, Wave Blaster 93-95, Raider 701 96-97	<b>66E</b> GP800 Power Valve
<b>62T</b> Super Jet 96-01, Blaster II	<b>65U</b> GP1200, XL1200, SUV1200
<b>64X</b> Wave Blaster 96-97, GP760, Raider 701/Deluxe/760 94-95, Venture 701/760, XL700/760	<b>66V</b> GP1200R, XL1200 LTD/XLT, 99-01 Power Valve



Yamaha	Part No.
Y701 (62T), Wave Raider/760	<b>13-2109</b>



Yamaha	Part No.
1100/1200 (63M/65U)	<b>232-11000</b>



Yamaha	Part No.
GP800 with stuffers	<b>222-80000</b>



Sea Doo	Carb	Flame Arrestor	Part No.
720	Mikuni 44mm	K&N	53-0915
720	Mikuni 46mm	K&N	53-0916

720 Kits also fit 650 & 580 Engines. Please specify for proper jetting.

**All carburetor kits are assembled with the above listed K&N Filters or Tau Ceti Pro Series II Flame Arrestors, the filter size and shape is the best fit based on the watercraft model.**

FOUR STROKE  
INTAKE SYSTEMS  
ENGINE/GASKETS  
EXHAUST  
DRIVE LINE HANDLING  
ELECTRICAL  
WATERLINE /BILGE  
STEERING & CONTROLS  
BODY  
SERVICE TOOLS ACCESSORIES  
SERVICE TOOLS /HARDWARE  
CHEMICAL



### HOT PRODUCTS YAMAHA AND KAWASAKI DUAL MIKUNI CARBURETOR KITS

Yamaha	Carb	Flame Arrestor	Part No.	Kawasaki	Carb	Flame Arrestor	Part No.
701 W/Rdr / 760 (62T)	Mikuni 44mm	K&N	53-0975	750	Mikuni 44mm	K&N	53-0830
701 W/Rdr / 760 (62T)	Mikuni 46mm	K&N	53-0974	750	Mikuni 46mm	K&N	53-0840
1100/1200	Mikuni 44mm	K&N	53-0980				
1100/1200	Mikuni 46mm	K&N	53-0992				

\* See page 64 for crankcase application chart

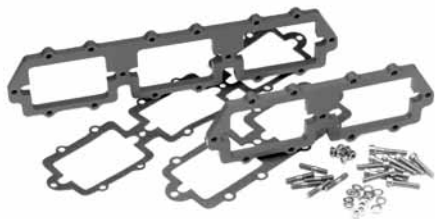
**All carburetor kits are assembled with the above listed K&N Filters or Tau Ceti Pro Series II Flame Arrestors, the filter size and shape is the best fit based on the watercraft model.**

### HOT PRODUCTS KAWASAKI SINGLE MIKUNI CARBURETOR KITS

Kawasaki	Carb	Flame Arrestor	Part No.
750 All	Mikuni 44mm	K&N	53-0820
750 All	Mikuni 46mm	K&N	53-0825

**All carburetor kits are assembled with the above listed K&N Filters or Tau Ceti Pro Series II Flame Arrestors, the filter size and shape is the best fit based on the watercraft model.**





**RIVA RACING REED VALVE SPACER BOOSTERS**

Yamaha	Part No.
701/760 (62T/64X) Case	<b>RY124M-S</b>
701/760 Spacer Gasket	<b>53-5235-GSK</b>
1100/1200 (63M/65U) Case	<b>RY128M-S</b>
1100/1200 Spacer Gasket	<b>53-5236-GSK</b>



**R&D REED VALVE SPACERS**

Yamaha	Part No.
701/760 (62T/64X) Reed Spacer Angled	<b>262-70101</b>



\*Hardware not included.

**R&D REED VALVE SPACERS**

Kawasaki	Part No.
750/800 Spacer	<b>251-75010</b>
750/800 Spacer Angled	<b>251-80000</b>
Reed Gasket	<b>7050</b>
6x50mm Stainless Steel Studs (Sold Each)	<b>62-3050</b>



Polaris	Part No.
SL700/SLT700/Hurricane	<b>50-9509</b>
SL900/SLTX/1050	

**BILLET ALUMINUM OIL INJECTION BLOCK OFF KITS**



Sea Doo	Part No.
580/650/720 All	<b>50-9504</b>



Sea Doo	Part No.
800/951	<b>50-9506</b>



**PLASTIC CAPS**

The plastic caps have many uses on a PWC. Use the caps to cap the primer fittings, fuel fittings and any other item you need to cap will performing repairs or performing routine maintenance. Caps are sold in packs of 10.

Description	Part No.
Small 1/8" - Oil Primer Nipple	<b>50-9500P</b>
Large 3/8" - Carb/Fuel Nipple	<b>50-9504P</b>



Yamaha	Part No.
650/701/760	<b>50-9500</b>

Kawasaki	Part No.
650/750	<b>50-9500</b>



Yamaha	Part No.
1100/1200/ GPR	<b>50-9501</b>

Kawasaki	Part No.
900/1100	<b>50-9503</b>



**CASE BLOCK OFF**

Kawasaki	Part No.
650/750	<b>50-9505</b>

\*Case Block off not applicable for 800SX-R

FOUR STROKE	INTAKE SYSTEMS	ENGINE/GASKETS	EXHAUST	DRIVE LINE HANDLING	ELECTRICAL	WATERLINE /BLIGE	STEERING & CONTROLS	BODY	ACCESSORIES	SERVICE TOOLS /HARDWARE	CHEMICAL
-------------	----------------	----------------	---------	---------------------	------------	------------------	---------------------	------	-------------	-------------------------	----------



**BLOWSION****BLOWSION****BLOWSION**

### BLOWSION FUEL FILLER FOR YAMAHA SUPERJET AND POLARIS OCTANE

Description	Part No.
Billet Dual Pick Up	01-02-502
Billet Single Pick Up	01-02-501



### BLOWSION FUEL FILLER FOR KAWASAKI SX/SXI/SXI-PRO/SX-R

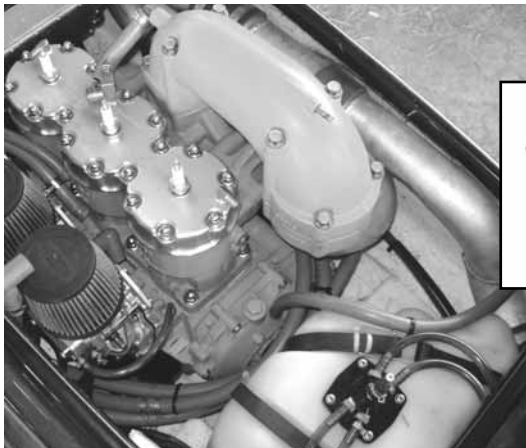
Description	Part No.
Billet Dual Pick Up	01-02-506



### BLOWSION RACING FUEL PICKUP FOR KAWASAKI SX/SXI/SXI-PRO/SX-R

Description	Part No.
Billet Dual Pick Up	01-02-507

### FUEL PICKUP FOR ZXI/STX-R



2010 KINGS CUP • THAILAND  
MACC RACING 1100 SXR RACE SKI



Provides maximum fuel flow to triple carbs applications. Used by the top Professional Racers for conversion Race Ski applications.

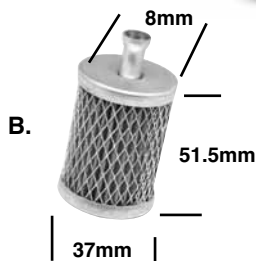
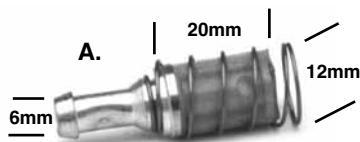
Description	Part No.
Kawasaki ZXI/STX-R	53-9957



### ONE WAY CHECK VALVE

One way vent valve allows fuel to travel in one direction only. 1/4" Fuel Line.

Description	Part No.
One Way Check Valve	53-9941



### FUEL TANK FILTER

Description	Part No.
A. Universal Fuel Tank Filter (Replaces Sea Doo #275-500-005)	53-9946
B. Universal Fuel Tank Filter (Replaces Yamaha #8H5-224560-00)	006-516
C. Sea Doo Fuel Filter Tank Filter (Replaces Sea Doo #275-500-089)	006-510



### R&D ULTRA 250X DEEP FUEL PICKUP

The R&D Deep Fuel Pickup is designed to maximize fuel volume. The stock fuel pickup is located horizontally in the gas tank three inches above the bottom of the tank. This leaves approximately 5 gallons of unusable fuel in the bottom of the tank. The R&D Deep Fuel Pickup relocates the stock fuel pickup to the bottom of the tank in a vertical position. The new positioning allows for 24 percent more riding time per tank of gas. The deep fuel pickup is an absolute must for offshore racing.

Description	Part No.
R&D Ultra 250X/LX Deep Fuel Pick Up	801-25100



### RIVA HIGH VOLUME FILTER

3/8" Fuel Line.

Description	Part No.
3/8" Riva High Volume Filter	<b>RY0503</b>



### 2" SLIMLINE WITH BRONZE ELEMENT

Clear nylon housing and bronze 75 Micron Element. 2" length. 1/4" Fuel Line.

Description	Part No.
2" Slimline with bronze	<b>53-9952</b>
Retail sales display card with 20 filters	<b>53-9952D</b>



### 3" SLIMLINE WITH POLYESTER ELEMENT

Lightweight high flow 90 Micron Polyester Element. 3" length. 1/4" Fuel Line.

Description	Part No.
3" Slimline with polyester	<b>53-9953</b>
Retail sales display card with 20 filters	<b>53-9953D</b>



### HOT PRODUCTS IN-LINE OIL FILTER

75 Micron Stainless Steel Element. 1.3" diameter, 1/4" Fuel Line. This filter works with fuel and oils. Perfect protection for oil pumps and oil injection engines.

Description	Part No.
Stainless Steel filter	<b>53-9943</b>
Retail sales display card with 20 filters	<b>53-9943D</b>



### HIGH-CAPACITY HIGH FLOW FILTER

80 Micron Paper Element. 1.6" diameter, 1/4" Fuel Line.

Description	Part No.
High Flow Paper Filter	<b>53-9945</b>
Retail sales display card with 20 filters	<b>53-9945D</b>



### RIVA OE REPLACEMENT FUEL FILTERS

OE replacements fit stock mounting bracket in all Yamaha watercraft these fuel filters also serve as a water separator protecting the motor from water damage

Description	Part No.
OE Replacement filter (all except 66V/E)	<b>RY-0501</b>
OE Replacement filter 66V/E	<b>RY-0502</b>



### QUICK DISCONNECT RESTRICTOR

Mikuni main jets thread into the billet part of the restrictor. This kit is used on the return lines of carburetors to fine tune fuel pump pressures.

Description	Part No.
Quick Disconnect Restrictor 1/4"	<b>QD-14</b>



#### Recommended Main Jets:

- Stock Carbs for 1200 (66V) 105
- Novi Carbs for 1200 (66V) 100-120
- Novi Carbs for 701 (61X) 100-120

### FUEL RETURN LINE RESTRICTOR 1/4" LINE

Designed to improve throttle response and reduce lean conditions in power band, our new Fuel Return Line Restrictor installs into fuel return line between carburetors and fuel tank, restricting fuel return rate, increasing pressure to carburetors. Precision-machined billet restrictor is threaded to accept a Mikuni Main Jet (not included) to match your application. For use with OEM and aftermarket carburetors.

Description	Part No.
Fuel Return Line Restrictor	<b>RY12-RLR-14</b>



2010 WORLD FINALS • LAKE HAVASU, AZ  
PHOTO COURTESY OF JIN OMURA

# HOT PRODUCTS PRIMER KITS



53-9920 - Single Mikuni Primer Kit Shown

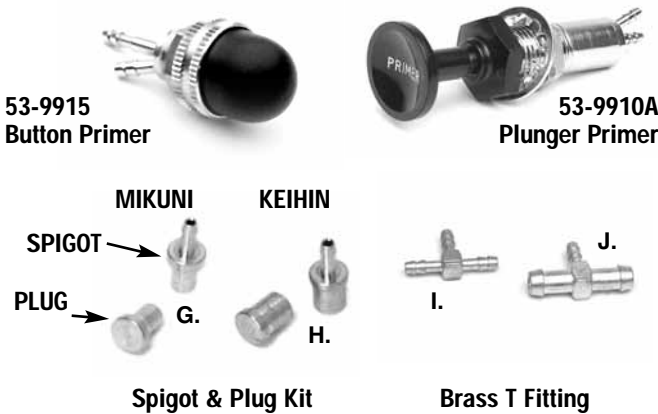
A cure for hard-starting motors. Draws fuel from the fuel line to give the carburetor a blast of fuel for easy starting. Eliminates chokes and adds to battery life. A must on high-performance modified carburetors with eliminated chokes. Hot Products primers are assembled with top-quality materials and include 9 feet of 1/8" blue primer hose to fit sit down craft. USA made top-quality plunger, brass "T" fittings, spigot, caps and zip ties.

Plunger Primer Kit		Part No.
Mikuni Primer Kit	Single	53-9920
Mikuni Primer Kit	Dual	53-9928
Mikuni Primer Kit	Triple	53-9922
Keihin Primer Kit	Single	53-9925
Keihin Primer Kit	Dual	53-9929
Keihin Primer Kit	Triple	53-9924

## HOT PRODUCTS PRIMER KIT BREAKDOWN BY PART NUMBER AND QUANTITY PER ITEM

Primer Kit Part No.	Item Description Item Part No.	Plunger Primer 53-9910A	Primer Line 53-9980	1/4x1/4x1/8 "T" 64-0017	1/4x1/4x1/8 "T" 64-0015	Mikuni Fittings 53-9921	Keihin Fittings 53-9926	Zip Ties See Pg. 234
53-9920	MIKUNI SINGLE	1	9FT	1	0	1	0	3
54-9928	MIKUNI DUAL	1	9FT	1	1	2	0	6
53-9922	MIKUNI TRIPLE	1	9FT	1	2	3	0	6
53-9925	KEIHIN SINGLE	1	9FT	1	0	0	1	3
53-9929	KEIHIN DUAL	1	9FT	1	1	0	2	6
53-9924	KEIHIN TRIPLE	1	9FT	1	2	0	3	6

## HOT PRODUCTS PRIMER KIT REPAIR PARTS



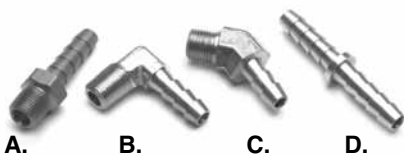
Primer Kit Parts Only	Part No.
Plunger Primer Only	53-9910A
Button Primer Only	53-9915
G. Mikuni Brass Spigot & Plug Kit	53-9921
Mikuni Brass Plug Only	53-9921B
H. Keihin Brass Spigot & Plug Kit	53-9926
Keihin Brass Plug Only	53-9926B
I. Brass T for Dual 1/8 x 1/8 x 1/8	64-0015
J. Brass T for Primer 1/4 x 1/4 x 1/8	64-0017
Primer Line 1/8 (Sold per foot)	53-9980



## PRIMER ADD ON KITS

Mikuni and Keihin primer add on kits for use with dual and triple carb kits. One add on kit needed for duals, two needed for triples. Kit includes spigot and cap, T-fitting, 6" of 1/8" blue primer hose and zip ties.

Description	Part No.
Mikuni Primer Add On	53-9923
Keihin Primer Add On	53-9927



## 1/4" HOSE BRASS FITTINGS

Description	Part No.
A. Straight: 1/8" Thread 1/4" Hose	64-0001
B. 90 Deg: 1/8" Thread 1/4" Hose	64-0010
C. 45 Deg: 1/8" Thread 1/4" Hose	64-0065
D. Barb Connector 1/4" I.D.-1/4" I.D.	64-0057



## PRESS IN NIPPLE

Description	Part No.
1/8" Straight	53-9936
1/4" Straight	53-9937



## PLASTIC "Y" FITTINGS

Description	Part No.
1/4" X 1/4" X 1/4" (White)	64-0046
1/4" X 1/4" X 1/4" (Black)*	64-0047

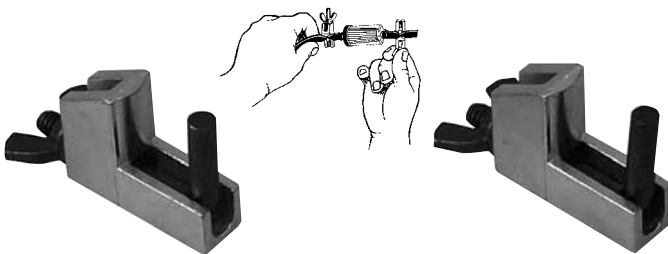
\*Reinforced with Crossbar



## 1/4" FUEL LINE & 1/8" PRIMER LINE

Our fuel and primer line is made from a thick walled polyurethane tubing. Both the fuel and primer line is clear blue. Sold per foot or 25 feet packages.

Description	Part No.
Fuel (1/4") per foot	53-9970
Fuel (1/4") - 25 foot package	53-9970-25
Primer Line (1/8") per foot	53-9980
Primer Line (1/8") per foot - 25 foot package	53-9980-25



## HOSE PINCHERS

Quick, easy way to pinch off fuel lines, etc, without damaging the fuel line. Sold two per set.

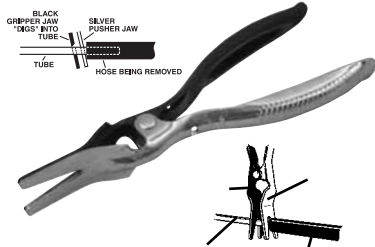
Description	Part No.
Hose Pinchers	LS22850



## HOSE SHEARS

Simply Scissor-action cutter for hose. Cuts clean, straight and no damaged hose ends. A must have tool for every toolbox.

Description	Part No.
Hose Shears	59-4020



## HOSE REMOVAL PLIERS

For easy removal of 5/32" to 1/2" (4mm to 14mm) hoses. Engage the tube (line) with the black jaw. This sharpened jaw actually "digs" into the tube to grip it! Squeeze, and the hose is easily pushed off by the silver jaw.

Description	Part No.
Hose Removal Pliers	LS47900



## FUEL LINE Q/D W/SHUT-OFF VALVE for 1/4" fuel line

Description	Part No.
Fuel Line Q/D w/Shut-off Valve	53-9951

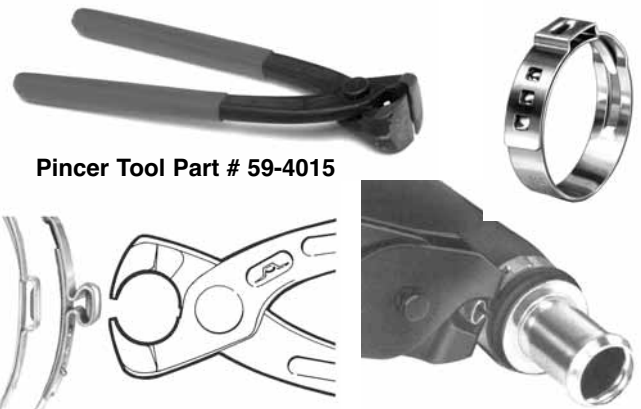


## HOSE PINCHER

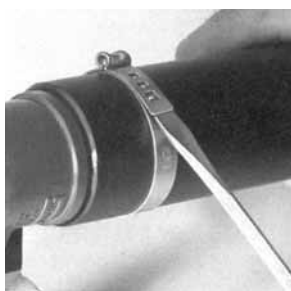
Clamps and holds hoses up to 3/4" inside diameter. Angled jaws close to create a complete seal every time. Jaws are offset for hard-to-reach areas. The handles lock firmly to hold the jaws in closed position.

Description	Part No.
Hose Pinchers	LS23000

## Fast, Easy, Strong and Secure Installation



Pincer Tool Part # 59-4015



## Fast & Easy Removal

## SQUEEZE ON STAINLESS STEEL LOW PROFILE CLAMPS

Oetiker Stepless Ear Clamps, due to the reinforcing 'dimple' in the ear, hold against pressure and vibration or hose shrinkage due to temperature changes. A built-in spring action permits the clamp to "breathe" without loosening, the need to retighten is eliminated. Once installed, any tampering is easily visible, making this an excellent clamp for service or security applications.

Description	Clamp Size	Part No.
Pincer Tool	-	59-4015
Clamp for 1/4" Hose (10 pcs/pk)	9/16	59-4016
Clamp for 3/8" Water Line (10 pcs/pk)	11/16	59-4017
Clamp for 1/2" Water Line (10 pcs/pk)	13/16	59-4018

100 Clamp Packs	Clamp Size	Part No.
Clamp for 1/4" Hose (100 pcs/pk)	9/16	59-4016-100
Clamp for 3/8" Water Line (100 pcs/pk)	11/16	59-4017-100
Clamp for 1/2" Water Line (100 pcs/pk)	13/16	59-4018-100

FOUR  
STROKE

INTAKE  
SYSTEMS

ENGINE/  
GASKETS

EXHAUST

DRIVE LINE  
HANDLING

ELECTRICAL

WATERLINE  
/BILGE

STEERING  
& CONTROLS

BODY

ACCESSORIES

SERVICE TOOLS  
/HARDWARE

CHEMICAL



# Carbon Tech



FOUR  
STROKE

INTAKE  
SYSTEMS

ENGINE/  
GASKETS

EXHAUST

DRIVE LINE  
HANDLING

ELECTRICAL

WATERLINE  
/BILGE

STEERING  
& CONTROLS

BODY

ACCESSORIES

SERVICE TOOLS  
/HARDWARE

CHEMICAL

## Sea Doo

CC	Model	Year	Performance Info	Part No.
951	All 951 models	97-06	Better mid & tpend for stock, limited and superstock motors: +4hp midrange,+2 top 206HT Highly modified motors for topend only	206SS or 206HT

## Yamaha

CC	Model	Year	Performance Info	Part No.
650	All 650 models	89-96	Smoother powerband	223LT
701	Wave blaster	93-95	225LT Stock cylinder, single carb.	225LT
	Superjet	94-95		
61X	FXI	94-95	225M Ported motors, single carb. 225SS Ported motors, dual carbs	or 225M 225SS
CASE	PROVXR	93-94		
	Waverunner III	94-95,97		
	Waveraider	96-97	202LT +3HP in midrange: for limited and stock motors	202LT
701	Waveraider	94-95		
with	Waveblaster	96		
62T	Superjet	96-09		
CASE	Wave Venture	95-98	202LT +3 HP in mid, +2HP top end for limited and non-ported rec boats	202LT
	XL 700	99-04		
760	All 760 Models	96-00	Better midrange & topend for stock Limited & superstock motors: Gives 100 RPM=1 MPH (tested by Pro-Tec)	266HT
800	GP800	98-00		
	GP800R	01-05		
	XL/XLT 800	00-04	Better midrange	302LT
1100	All 1100 models	95-97		
1131	GP1200	97-99	*+3 HP mid to top: limited racing	338LT
	XL1200	98-99	Top end: only choice for fuel Ing.	338HT
	SUV1200	99-04		
1176	XL1200ltd	99-00	Stock motors, single pipe motors	366HT
	XLT1200	01-05	Single pipe, limited triple pipe	366SS
	GPI1200R	00-02		
1296	GP1300R	03-08	Stock motors, single pipe motors	366HT
			Single pipe, limited triple pipe	366SS

## Kawasaki

CC	Model	Year	Performance Info	Part No.
550	ALL	91-95	Smoother powerband	239LT
650	ALL	86-96	Improved low to midrange	212LT
743	ALL	92-02	Better low & mid: stock & limiteds Superstock & ported motors High RPM, stroked or fuel injected	238LT 238SS 238HT
782	800 Motor	03-09	Better low & mid: stock & limiteds Superstock & ported motors High RPM stroked or fuel injected	238LT 238SS 238HT
891	ALL 900 MOTORS	95-06	Better midrange and bottom end	338LT
1071	ALL 1100 MOTORS	96-04	Better low & mid: stock & limiteds High RPM, stroked or fuel injected	338LT 338HT
1176	Ultra 150	99-05		338LT 338HT
	1200STXR	04-05		



## RAD VALVES FOR YAMAHA WATERCRAFT

Fits Yamaha Engines:  
701(62T) (94-08), 760(64X),  
1100(63M) and 1200(65U)



Yamaha	Rad Valve	Replacement Rad Reed	Gasket
Stock Intake	<b>RAD-131*</b>	<b>PRO-131</b>	2830
Manifold in Stock applications			
Riva or R&D	<b>RAD-131R*</b>	<b>PRO-131R</b>	2830
Twin or Triple Intake Manifold			

\* Order one set per cylinder, 2 valves for twin, 3 valves for triple cylinders.



## BOYESEN POWER REEDS

- The unique dual-petal design
- Quicker acceleration, throttle response and speed.
- Dual-flex epoxy fiber material for maximum longevity and reliability.

Yamaha	Part No.
500 All	022
650 Super Jet	023
650 Wave Runner (All)	023
700 Wave Raider (All)	024
701 FX1 (94-95)	024
701 Pro-VXR (93-94)	024
701 Super Jet (94-95)	024
Wave Blaster (93-95)	024
Wave Raider (Single Carb) (96)	024
Wave Runner III (94-97)	024
701 Super Jet (96-09)	026
Wave Blaster (96)	026
Wave Raider (94-96)	026
Wave Raider DLX (95-96)	026
Wave Runner XL (99-04)	026
Wave Venture (95-98)	026
GP760(97-00), 760 Waves All (95-99)	029
1100 All (95-97)	028
GP1200(97-99), SUV1200(99-04)	033
XL1200(98)	033

Kawasaki	Part No.
550SX (91-95)	014
650SX/X2/SC/SS/ST/TS (All)	012
750SX/SXI/SXI-Pro (All)	013
750SS/STS/XI/ZXI (All)	013
800 SX-R (03-09)	013
900ZXI (-97), STX (97-01), STS (01)	020
1100ZXI/STX (96-03)	021
Ultra 130 (01-04)	036
STX-R 1200 (02-05), Ultra 150 (99-05)	021

Polaris	Part No.
650 All (92-95)	016
SL750 (93-95), SLT750 (94-95)	016
SL780 (96-97), SLT780 (96-97)	016
SLT780 (96-97), SLX780 (96)	016
SLX785 Pro (97-01)	016
700 All (-02)	013
Octane (02-04)	013
800 DI (02-04)	013
Hurricane (96-97)	013



## BOYESEN PRO SERIES REEDS

- Quicker acceleration for that all important holeshot.
- Crisper mid-range allowing you to pull that extra boat length.
- Carries RPMs further past peak allowing you to run that steeper pitched impeller for increased top end.
- Easy starting and smoother idling for those dreaded no-wake zones.
- Increased life over traditional carbon fiber reeds.

Yamaha	Stock Unlimited	Hi-Performance
700 Wave Raider (All)	—	PRO-35
701 FX1 (94-95)	—	PRO-35
701 Pro-VXR (93-94)	—	PRO-35
701 Super Jet (94-95)	—	PRO-35
701 Super Jet (96-08)	PRO-36	PRO-37
Wave Blaster (93-95)	PRO-36	PRO-37
Wave Blaster (96)	PRO-36	PRO-37
Wave Raider (94-96)	PRO-36	PRO-37
Wave Raider, Single Carb (96)	—	PRO-35
Wave Raider DLX (95-96)	PRO-36	PRO-37
Wave Runner III (94-97)	—	PRO-35
Wave Runner XL (99-04)	PRO-36	PRO-37
Wave Venture (95-98)	PRO-36	PRO-37
GP760 (97-00)	PRO-38	PRO-39
760 Waves All (96-99)	PRO-38	PRO-39
1100 All (95-97)	PRO-40	—
GP1200 (97-99), GP1200R (99)	PRO-77	PRO-78
SUV1200 (99-04), XL1200 (98)	PRO-77	PRO-78

Kawasaki	Stock Unlimited	Hi-Performance
750 All	PRO-24	PRO-25
800 SX-R (03-08)	PRO-24	PRO-25
900 All (-96)	PRO-76	—
1100 All (96-03)	PRO-57	—
Ultra 150/STX-R1200 (99-05)	PRO-57	—

Polaris	Stock Unlimited	Hi-Performance
700 All (thru 04)	PRO-26	PRO-27
Octane (02-04)	PRO-26	PRO-27
750 All (93-95)	—	PRO-29
780 All (98-97)	—	PRO-31
785 SLX Pro (97-01)	—	PRO-31



## BOYESEN REED VALVE STUFFER KIT

Kit includes a complete engine set of Boyesen 3D Reed Valve Stuffers and Boyesen PRO Series reeds.

Yamaha	Part No.
GP1200R (00-02), XL/XLT 1200 (99-05), GP1300R (03-08)	RSK-306
Replacement Reed *Must use with Boyesen Stuffer	PRO-128

FOUR STROKE  
INTAKE SYSTEMS  
ENGINE/GASKETS  
EXHAUST  
DRIVE LINE HANDLING  
ELECTRICAL  
WATERLINE /BLIGE  
STEERING & CONTROLS  
BODY  
ACCESSORIES  
SERVICE TOOLS /HARDWARE  
CHEMICAL



## MOTO TASSINARI V-FORCE3 THE FEATURES AND BENEFITS OF VFORCE TECHNOLOGY

The VForce3 Reed Valve System incorporates features you won't find with other system on the market. With such features as twice the reed tip surface, radius cage surface, snap-together construction, proprietary carbon fiber recipes and more. By doubling the reed tip surface the petals now only need to open half as far to have the same flow as a stock style cage. This is a significant advantage when you factor in that a reed petal opens and closes 133 times per second at 8,000 rpm. The petals are only traveling half the distance of a stock style cage, so now fatigue to the petal has been greatly reduced, increasing petal life. This design also enables the valve to drastically improve the entire powerband with a significant boost in the bottom and mid. Instant throttle response is an understatement! The petals now sit on a radius surface to create a "pre-loading" effect that improves an already snappy acceleration. Our new cage design now allows the reed petal tips to be recessed into the cage itself. This allows for a cushioning of the reed tips and also discourages the possibility of any back-flow.

### SYMMETRICAL REED PETALS:

The VForce3 now uses symmetrical reed petals for both the inner and outer reed petals. No longer will you need to be concerned with having both "inner" and "outer" reed petals.

### SNAP-TOGETHER CONSTRUCTION:

The VForce3 Reed Valve System incorporates the industry's first and only patented snap together reed valve design. The entire assembly is completely screw free, meaning that when reed petals need changing the job is now literally a "SNAP".

### CUSTOM AIR-GUIDES:

Custom air guides specific to each individual application ensure the maximum airflow and performance benefits of the VForce3 reed valve system in your pwc.

### PROPRIETARY CARBON LAY-UP:

Moto Tassinari continues to test and develop new "recipes" for our carbon fiber used in the VForce3 Reed Valve system. In fact Moto Tassinari specs our own exclusive recipes for all the carbon



fiber we use, you can be assured you'll never get "generic" carbon fiber designed for somebody and something else, when you buy VForce.

### TWICE THE REED TIP SURFACE:

The unique and proven design of the VForce3 Reed Valve System doubles the available reed tip surface over a conventional reed valve design. By doubling the effective reed tip surface it enables the engine to get more air with less effort. The number one rule in two-stroke motor modification is More Air = More Horsepower.

### AIRFOIL TECHNOLOGY:

The new reed cage design on the VForce3 Reed Valve system incorporates airfoil shaped (flat on bottom/curved on top) reed tip surfaces which in turn increases the velocity of the fuel/air mixture as it passes through and over, creating the optimum fuel atomization.

Yamaha	V-Force 3	Repl. V-Force 3 Pedal***	Repl. V-Force 3 Gasket**
All Triples	<b>V3140-794-3</b>	<b>3P794A***</b>	<b>G3140**</b>
All Twins	<b>V3140-794-2</b>	<b>3P794A***</b>	<b>G3140**</b>

*\*Not compatible for older WaveBlasters and GPR (Power valve cylinders) applications*

Kawasaki	V-Force 3	Repl. V-Force 3 Pedal***	Repl. V-Force 3 Gasket**
All Triples	<b>V3150-794-3</b>	<b>3P794A***</b>	<b>G3150**</b>
All Twins	<b>V3150-794-2</b>	<b>3P794A***</b>	<b>G3150**</b>

Polaris	V-Force 3	Repl. V-Force 3 Pedal***	Repl. V-Force 3 Gasket**
Octane 777	<b>V3130-794A-2</b>	<b>3P794A***</b>	—

*\*\*Gaskets are sold per gasket.*

*\*\*\*Replacement Pedal kits are sold per Reed Valve (to rebuild one reed valve per kit)*



## V-FORCE DELTA 2



Sea Doo	Delta 2	Delta 2 Repl. Pedal***	Delta 1 Repl. Pedal (97-99)	Repl. Gasket**
GSX/GTX/XP 951*	<b>V2W121-2</b>	<b>2P127-1***</b>	<b>DP120-1***</b>	<b>6755**</b>

Polaris				
SL650,SL/SLT750	<b>V2W131-3</b>	<b>2P117-1***</b>		<b>4050**</b>
SLX780/785 Pro				
SL900/SLTX1050	<b>V2W132-3</b>	<b>2P117-1***</b>		<b>4050**</b>

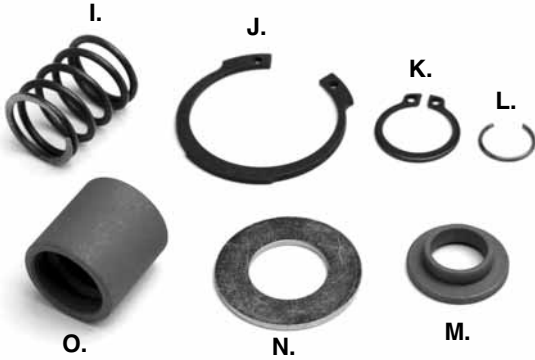
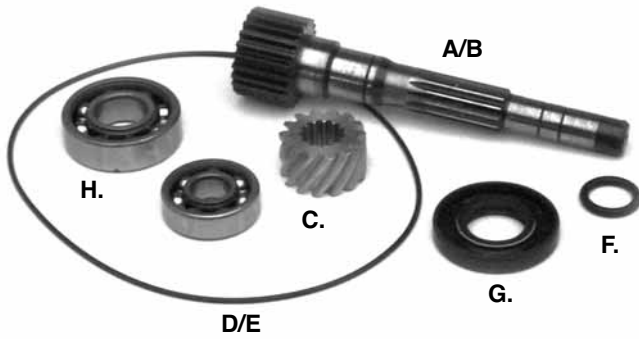
Yamaha				
All Triples	<b>V2W140-3</b>	<b>2P127-1***</b>	<b>DP120-1***</b>	<b>4430**</b>
All Twins****	<b>V2W140-2</b>	<b>2P127-1***</b>	<b>DP120-1***</b>	<b>2830**</b>

Kawasaki				
All Triples	<b>V2W150-3</b>	<b>2P127-1***</b>	<b>DP120-1***</b>	<b>MT6150**</b>
All Twins	<b>V2W150-2</b>	<b>2P127-1***</b>	<b>DP120-1***</b>	<b>MT6150**</b>

• Sold as complete system per engine.

*\*Must use with part #53-0939 R&D Intake Manifold \*\*Gaskets are sold per gasket. \*\*\*\*Except older Blasters \*\*\*Replacement Pedal kits are sold per Reed Valve (to rebuild one reed valve per kit)*

# ROTARY VALVE PARTS



## ROTARY VALVE TIMING WHEEL

<b>Sea Doo</b>	<b>Part No.</b>
Rotary Valve Timing Wheel	012-170



## ROTARY SHAFT PULLER

Special rotary shaft puller tool for Sea Doo PWC.  
Fits: Most 580cc, 650cc, 720cc, and 800cc Sea Doo engines.  
(6mm thru bolt included)

*\*Lubrication of all areas is required before using this tool*

<b>Sea Doo</b>	<b>Part No.</b>
Rotary Shaft Puller	B-204

# SEA DOO ROTARY VALVE SHAFT AND PARTS

Descriptions	OEM#	Part No.
A. Rotary Valve Shaft 580/650/720	293-837-251	010-455
B. Rotary Valve Shaft 800	290-837-351	010-457
C. Rotary Valve Shaft Gear only (14 teeth) 580/650/720/800 (89-up)	420-935-735	010-450
D. Rotary Cover O-Ring 580/650/720	293-300-023	6250
E. Rotary Cover O-Ring 800	290-831-765	6628
F. Rotary Shaft O-Ring 580/650/720/800	293-300-024	6260
G. Rotary Shaft Oil Seal 580/650/720/800	290-930-580	009-779
H. Rotary Shaft Bearing 580/650/720/800	290-932-032 290-932-797	010-225 010-226

Descriptions	OEM#	Part No.
I. Rotary Shaft Spring 580/650/720/800	290-938-810	010-453
J. Rotary Shaft Snap Ring - Large 580/650/720/800	290-845-260	010-483
K. Rotary Shaft Snap Ring - Small 580/650/720/800	290-932-032	010-482
L. Rotary Shaft C-Clips 580/650/720/800	290-845-160	010-454
M. Rotary Spring Holder 580/650/720/800	420-827-430	010-484-01
N. Rotary Bearing Washer 580/650/720/800	420-227-439	010-459
O. Rotary Shaft Barrel 580/650/720/800	290-847-282	010-484

## STAINLESS STEEL ROTARY VALVES



Model	Year	Opening Duration	Part No.
580 All	94-96	147°	006-147
650 All	94-95	159°	006-159
720	95-02	159°	006-159
785	95-02	159°	006-159



2010 WORLD FINALS MORNING AT BODY BEACH  
LAKE HAVASU, AZ

FOUR  
STROKE

INTAKE  
SYSTEMS

ENGINE/  
GASKETS

EXHAUST

DRIVE LINE  
HANDLING

ELECTRICAL

WATERLINE  
/BLIGE

STEERING  
& CONTROLS

BODY

ACCESSORIES  
SERVICE TOOLS

/HARDWARE

CHEMICAL





# RACING FLAME ARRESTORS (without Cotton Media)

Experience increased horsepower and engine protection with K&N Personal Watercraft flame arrestors for both normal and race applications. K&N "RACING ONLY" flame arrestors have an epoxied screen filter that does not have the cotton media.

K&N flame arrestors replace the restrictive factory airbox. In most cases an adapter is required (for adapters see pages 30 & 31) to mount the flame arrestor onto the carburetor. Some watercraft may require a slight adjustment to the carburetor's fuel circuits to allow for optimum performance.

## 4" Tall



**59-2040R**  
STAINLESS TOP

**59-2040RK**  
COMPOSITE TOP

Height	Top Color	Part No.
4"	Black Composite	<b>59-2040RK</b>
4"	Stainless Steel	<b>59-2040R</b>
Water Repellent Pre-Filter		<b>WR145-10-4DT</b>

## 2-1/2" Tall



**59-2042RK**  
CHROME TOP

**59-2042R**  
COMPOSITE TOP

Height	Top Color	Part No.
2-1/2"	Black Composite	<b>59-2042RK</b>
2-1/2"	Chrome	<b>59-2042R</b>
Water Repellent Pre-Filter		<b>WR145-115-25DT</b>

# Outerwears Racing Accessories

The Outerwears Pre-filter is an excellent solution to prevent water from entering into the engine without restricting air flow or causing a loss in performance. An Outerwears Pre-Filter is designed to be water repellent and will reduce the risk of water entering through an air intake system. Outerwears offers water repellent pre-filters for K&N, Tau Ceti, ProK and R&D performance air filters and flame arrestors.



## 2" Tall



Height	Top Color	Part No.
2"	Black Composite	<b>59-2046</b>
Water Repellent Pre-Filter		<b>WR125-2DT</b>



## K&N RUBBER BASE CHROME TOP CRANKCASE VENT FILTERS

Designed to clamp directly to metal or plastic tubing. Ideal for engines, transmissions, oil or gas tanks on racing vehicles.

Sea Doo	Part No.
Flange I.D. 5/8" - 2" Diameter - 1 1/2" Height	<b>62-1340</b>
Flange I.D. 1 3/8" - 3" Diameter - 2 1/2" Height	<b>62-1440</b>

Description	Flame Arrestor Type	Part No.
<b>A.</b> 4.25" x 3" Taper/4" Tall	K&N 59-2040R/RK	<b>WR145-10-4DT</b>
<b>B.</b> 4.25" x 3.5" Taper/2.5" Tall	K&N 59-2042R/RK	<b>WR145-115-25DT</b>
<b>C.</b> 4" dia/1.75" Tall	Tau Ceti 53-4270	<b>WR125-15DT</b>
<b>D.</b> 4" dia/2.25" Tall	Tau Ceti 53-4272. ProK	<b>WR125-2DT</b>
<b>E.</b> 4" dia/2.25" Tall (Open Top)	Tau Ceti 53-4272, ProK	<b>WR125-225</b>
<b>F.</b> 4" x 3" Taper/3.5" Tall	Tau Ceti 53-4275	<b>WR125-10-35DT</b>
<b>G.</b> Pro-Lock SD951/2.5" Tall	R&D 203-95000	<b>WR30-25DTPRO</b>

# HOT PRODUCTS RACING POWER FILTERS

by Tau Ceti

Tau Ceti's new Pro Series II Flame Arrestors are constructed from top quality materials such as aircraft grade aluminum, stainless steel, and a superior quality rubber base. This Flame Arrestor is designed with both duration and superior performance in mind. Using an extremely light anodized aluminum top in Silver, Black, Blue, Green and Red and a stainless steel mesh, this product is 100% corrosion resistant. With our free flowing, **stainless steel mesh**, we achieved an increase in acceleration and a much better throttle response. The universal rubber mount will fit any personal watercraft with a stock carburetor using the appropriate adapter (for adapters see pages 82 & 83). No re-jetting is necessary on stock boats.



Description	Color	Part No.
Round Filter 2"	Silver	53-4272-SIL
Round Filter 2"	Black	53-4272-BLK
Round Filter 2"	Blue	53-4272-BLU
Round Filter 2"	Green	53-4272-GRN
Round Filter 2"	Red	53-4272-RED
Water Repellent Pre-Filter	Black	WR125-2DT

Description	Color	Part No.
Round Filter 1.5"	Silver	53-4270-SIL
Round Filter 1.5"	Black	53-4270-BLK
Round Filter 1.5"	Blue	53-4270-BLU
Round Filter 1.5"	Green	53-4270-GRN
Round Filter 1.5"	Red	53-4270-RED
Water Repellent Pre-Filter	Black	WR125-15DT

**Please see pages 96 & 97 for our complete line of air filter adapters required for most applications**



## HOT PRODUCTS TORNADO SERIES FILTERS

by



The all new Hot Products Tornado Series Filters by Tau Ceti is the newest performance filter available for the pwc performance industry. The new Tornado Series Filters feature a velocity cone with proprietary designed air channels to increase the air flow into the induction system. These filters are made using the same top quality materials as the Tau Ceti Pro Series Filters. The new filter is a cone design and is .500" taller than the current 2" Tau Ceti Pro Series Filter allowing for use many engine applications. The velocity cone is clear/smoke color and the filter top features an aluminum filter top ring.

The universal rubber mount will fit any personal watercraft with a stock carburetor using the appropriate adapter (for adapters see pages 82 & 83). No re-jetting is necessary on stock boats. The filter tops are currently available in silver and black. Each filter includes a filter clamp for installation.



**HOT PRODUCTS TORNADO FILTER INSIDE VIEW**

Description	Color	Part No.
Hot Products Tornado Series Filter	Silver	53-4274-SIL
Hot Products Tornado Series Filter	Black	53-4274-BLK
Water Repellent Pre-Filter		PFTCP-25

FOUR STROKE	INTAKE SYSTEMS	ENGINE/GASKETS	EXHAUST	DRIVE LINE HANDLING	ELECTRICAL	WATERLINE /BLIGE	STEERING & CONTROLS	BODY	ACCESSORIES SERVICE TOOLS /HARDWARE	CHEMICAL
-------------	----------------	----------------	---------	---------------------	------------	------------------	---------------------	------	-------------------------------------	----------

# APPLICATIONS FOR K&N FILTERS & ADAPTERS

SEA DOO	Stock Carb Type & Quantity	Race K&N P#	Regular K&N P#	Adapter P#
580GTX 92-94	2/38M	59-2040RK	59-2910	53-4460
580GT 89-96	1/38M	59-2042RK	59-2010	53-4460
580GTS 93-96	1/38M	59-2042RK	59-2010	53-4460
580SP 88-96	1/38M	59-2042RK	59-2010	53-4460
580SPX 92-94	2/38M	59-2042RK	59-2910	53-4460
580 SPI 88-96	1/38M	59-2042RK	59-2010	53-4460
650XP 94	2/40M"1"	59-2042RK		53-4465
650XP 90-93	2/40M"1"	59-2042RK		53-4465
650GTX 95	2/40M"1"	59-2040RK		53-4465
650SPX 95	2/40M"1"	59-2042RK		53-4465
720XP 95	2/40M"1"	59-2042RK		53-4465
720GTI 97-99	1/40M"1"	59-2040RK		53-4465
720GTI 96	2/40M"1"	59-2040RK		53-4465
720GTS 97-00	1/40M"1"	59-2042RK	59-2010	53-4465
720SP 97	1/40M"1"	59-2042RK	59-2010	53-4465
720SPX 96	2/40M"1"	59-2042RK		53-4465
720HX95-97	2/40M"1"	59-2040RK	59-2010	53-4465
720GS 97-00	1/40M"1"	59-2040RK	59-2010	53-4465
720GSI 97	1/40M"1"	59-2040RK		53-4465
800GTX 96-97	2/40M"1"	59-2040RK		53-4465
800GSX 96-97	2/40M"1"	59-2040RK		53-4465
800XP 95-97	2/40M"1"	59-2042RK		53-4465
800SPX 97-99	2/40M"1"	59-2042RK		53-4465
950GSX LTD 97-99	2/46M"1"	59-2042RK		not required
950XP LTD 98-00	2/46M"1"	59-2042RK		not required
950GTX LTD 98-99	2/46M"1"	59-2042RK		not required
<b>YAMAHA</b>				
W/Jammer 500 88-89	1/38M	59-2042RK	59-2000	53-4460
W/Runner 500 88-89	1/38M	59-2042RK	59-2000	53-4460
W/runner 650 90-95	1/44M	59-2042RK	59-2000	53-4480
W/Runner III 650 90-95	1/44M		59-2020	Not Available
VXR 650 91-95	1/44M		59-2020	Not Available
Super Jet 650 90-93	1/44M	59-2042RK	59-2000	53-4480
W/Raider 701 94-95	2/38M	59-2040RK		53-4462
W/Raider 70196-97	1/44M	59-2040RK		53-4482
W/Venture 701 95-98	2/38M	59-2040RK		53-4462
W/Blaster 701 96-97	2/38M	59-2042RK		53-4462
W/blaster 701 93-95	1/44M		59-2020	Not Available
Super Jet 701 94-95	1/44M	59-2042RK	59-2000	53-4480
Super Jet 701 96-09	2/38M	59-2042RK		53-4460
FX1 701 94-95	1/44M	59-2042RK	59-2000	53-4480
XL700 95-00	2/38M	59-2042RK		53-4462
GP760 97-00	2/44M	59-2040RK		53-4480
XL760 98-99	2/44M	59-2040RK		53-4482
W/Raider 760 96	2/44M	59-2040RK		53-4482
W/blaster II 760 96-97	2/44M	59-2040RK		53-4480
W/Venture 760 96-98	2/44M	59-2040RK		53-4480
GP800 98-00	2/44M NEW	59-2044R		53-4466
W/Raider 1100 95-06	3/38M	59-2040RK		53-4462
W/Venture 1100 96-98	3/38M	59-2040RK		53-4462
XL1200 98	3/44M	59-2040RK		53-4480
GP1200 97-99	3/44M	59-2040RK		53-4480
GP1200R 00	3/44M NEW	59-2044R		53-4466
<b>KAWASAKI</b>				
JS300 86-91	1/38M	59-2042RK	59-2000	53-4460
JS400 74-76	1/38M	59-2042RK	59-2000	53-4460
JS440 77-90	1/38M	59-2042RK	59-2000	53-4460
JS440 91-92	1/42K	59-2042RK	59-2000	53-4440
JS550 82-85	1/38M	59-2042RK	59-2000	53-4460
JS550 86-90	1/44M	59-2042RK	59-2000	53-4480

KAWASAKI	Stock Carb Type & Quantity	Race K&N P#	Regular K&N P#	Adapter P#
JS550SX 91-95	1/42K	59-2042RK	59-2000	53-4440
650X2 89-94	1/28K	59-2042RK	59-2015	Not Available
JS650SX 89-94	1/28K	59-2042RK	59-2000	Not Available
650TS 89-96	1/38K	59-2042RK		53-4440
650SC 90-95	1/38K	59-2042RK	59-2000	53-4440
750SX 92-95	1/40K	59-2042RK	59-2860	53-4440
750SXI 95	1/38K	59-2042RK		53-4450
750SXI 96-97	2/40M"1"	59-2042RK		53-4465
750SXI PRO 98-00	2/40M"1"	59-2042RK		53-4465
750SS 92-98	1/40K	59-2042RK	59-2860	53-4440
750XI 93-97	2/40K	59-2042RK		53-4440
750XIR 94	2/40K	59-2042RK		53-4440
750ST 94-95	1/40K	59-2042RK	59-2860	53-4440
750STS 95-97	2/38K	59-2042RK		53-4450
750ZXI 95-98	2/38K	59-2042RK		53-4450
800SX-R 03-09	2/40M"1"	59-2042RK		53-4465
900ZXI 95-97	3/38K	59-2040RK		53-4450
900STX 97-99	3/38K	59-2040RK		53-4450
1100ZXI 96-97	3/38K	59-2040RK		53-4450
1100STX 97-99	3/38K CDCV	59-2040RK		Not Available
ULTRA150 99-00	3/40K CDCV	59-2040RK		Not Available
<b>POLARIS</b>				
SL650 92-95	3/38M	59-2042RK		53-4460
HURRICANE700 96-97	2/38K	59-2042RK		53-4440
SL/SLT700 96-97	2/38K	59-2042RK		53-4440
SLH700 98-00	2/38K	59-2042RK		53-4440
SL/SLT750 93-95	3/38M	59-2042RK		53-4460
SL/SLT780 96-97	3/38M	59-2042RK		53-4460
SLX780 95-96	3/38M	59-2042RK		53-4460
SLXPRO785 97-00	3/44M	59-2042RK		53-4480
SL900 96-97	3/38K	59-2042RK		53-4440
SL/SLTX1050 96-00	3/38K	59-2042RK		53-4440
SLXH1050 98-99	3/38K	59-2042RK		53-4440
Genesis 99-00	3/38K	59-2042RK		53-4440
1200 PRO 00	3/38K	59-2042RK		53-4440
Virage/TX 00	3/38K	59-2042RK		53-4440
<b>TIGER SHARK</b>				
Daytona650 92-93	1/46M	59-2042RK		53-4490
Daytona650 95	2/38M	59-2042RK		53-4460
MonteCarlo650 94-95	1/46M	59-2042RK		53-4490
MonteCarlo650 96	1/44M	59-2042RK		53-4480
MonteCarlo650 97	1/40M"1"	59-2042RK		53-4465
Montego650 94-96	1/44M	59-2042RK		53-4480
Montego650 97	1/40M"1"	59-2042RK		53-4465
Barracuda650 93-95	1/46M	59-2042RK		53-4490
Daytona770 96-97	2/40M"1"	59-2042RK		53-4465
MonteCarlo770 96-97	2/40M"1"	59-2042RK		53-4465
MonteCarlo900 95	3/44M	59-2042RK		53-4480
MonteCarlo900 96	3/40M"1"	59-2042RK		53-4465
Daytona1000 97-98	3/40M"1"	59-2042RK		53-4465
MonteCarlo1000 97-98	3/40M"1"	59-2042RK		53-4465
TS640 98-99	1/38M	59-2042RK		53-4460
TS770 98-99	1/38M	59-2042RK		53-4460
TS770R 98-99	2/38M	59-2042RK		53-4460
TS770L 98	2/38M	59-2042RK		53-4460
TS770L 99	1/38M	59-2042RK		53-4460
TS1000 98	3/40M"1"	59-2042RK		53-4465
TS1000L 98	3/40M"1"	59-2042RK		53-4465
TS1100R	3/40M"1"	59-2042RK		53-4465



**ALUMINUM  
AIR FILTER  
ADAPTERS  
FOR KEIHIN  
CARBURETORS**

**ALL ADAPTERS  
SOLD INDIVIDUALLY**



**Keihin** Part No. 53-4440  
38/40/42mm (50mm Bore)



**Keihin** Part No. 53-4450  
OEM Carb (44mm Bore)  
K750 SXI-95, 750ZXI, K900/1100ZXI

# ALUMINUM AIR FILTER ADAPTERS FOR MIKUNI CARBURETORS. SOLD EACH.



Mikuni	Part No.
38mm 38mm Bore	<b>53-4460</b>
44mm 46mm Bore	<b>53-4480</b>
46mm 48mm Bore	<b>53-4490</b>



For Oil Injection →

Mikuni	Part No.
38mm w/oil injection only	<b>53-4462</b>



Mikuni	Part No.
OEM 40mm "I" Series (48mm Bore)	<b>53-4465</b>
Sea Doo HX/XP, K750 SXI 96-02, K800SX-R 03-08	

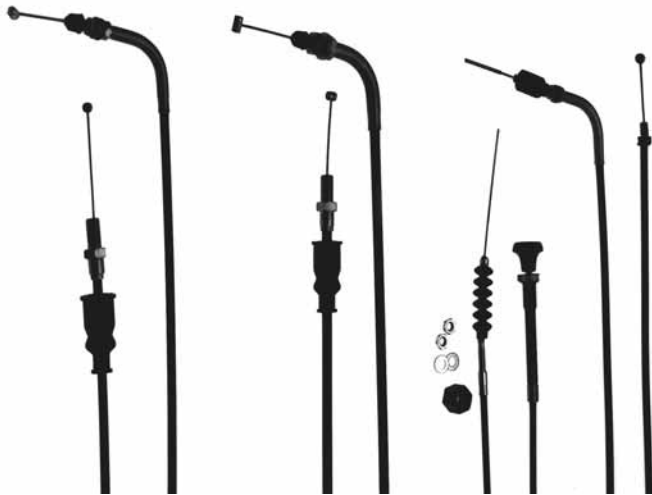


Mikuni	Part No.
OEM Carb Yamaha	<b>53-4466</b>
GPR Series (57mm Bore)	



### OIL INJECTION SPACER PLATES

Description	Part No.
Mikuni 44mm	<b>53-4485</b>
Mikuni 46mm	<b>53-4495</b>
Press in Nipple (1/8") only	<b>53-9936</b>



### REPLACEMENT THROTTLE CABLES

Sea Doo	OEM#	Part No.
720 XP 95, 800 SPX 97-99, 800 SP 95-96	277-000-468	<b>002-039-03</b>

Yamaha		Part No.
500WR '87-'93, 650SJ '90-'93, 650 WR/WRIII/LX/WR VXR '90-'96, 701 SJ '90-'95, WR701 '96-'97, W/B701 '93-'95, 701WRII GP '94-'95, 701 WR Pro VXR '93-'94, 701 WRII '97	EUO-U7252-01	<b>58-3501</b>
701 WR DX 95, 701 WV 95-96, 1100 WR 95-96, 1100 WV 96	GJ1-U7252-00	<b>002-057</b>

Kawasaki		Part No.
440 '77-'86, 550 '82-'86	54012-3001	<b>58-3121</b>



2010 WORLD FINALS • LAKE HAVASU, AZ  
CHRIS MACCLUGAGE • MACC RACING



FOUR STROKE	INTAKE SYSTEMS	ENGINE/ GASKETS	EXHAUST	DRIVE LINE HANDLING	ELECTRICAL	WATERLINE /BLIGE	STEERING & CONTROLS	BODY	ACCESSORIES	SERVICE TOOLS /HARDWARE	CHEMICAL
-------------	----------------	-----------------	---------	---------------------	------------	------------------	---------------------	------	-------------	-------------------------	----------

# PERFORMANCE FILTER KITS FOR TWO STROKE MOTORS

FOUR STROKE  
INTAKE SYSTEMS  
ENGINE/GASKETS  
EXHAUST  
DRIVE LINE HANDLING  
ELECTRICAL  
WATERLINE /BILGE  
STEERING & CONTROLS  
BODY  
SERVICE TOOLS ACCESSORIES  
SERVICE TOOLS /HARDWARE  
CHEMICAL



Kawasaki Part No.  
1200STXR Stock Carb/Stock Pipe **200-01240**



Kawasaki Part No.  
800SX-R Stock Carb (I Series Adapters Included) **200-00800**  
800SX-R Aftermarket Carb **200-00120**  
120mm center to center (Adapter not included)



**SD 951**  
**#203-95000**

Sea Doo Part No.  
951 All **203-95000**



Yamaha Part No.  
GP1300R Stock **200-13143**  
Fuel Injection  
GP1200R/XLL/XLT1200 **200-00142**



**Ultra 150 #200-00140**

Kawasaki Part No.  
Ultra 150 1200cc **200-00140**  
Stock Carbs



## GP 1300R POWER STACK AIR FILTER KIT

The R&D GP 1300R Power Stack Air Filter Kit is designed to assemble on to the front of the OEM air plenum box. The R&D Power stack adds bottom and mid range power performance while increasing engine RPM's.

Yamaha Part No.  
GP 1300R for Stock Air Box **200-13100**



## RIVA POWER FILTER FOR GP1300R

Power filter fits directly onto OEM air box assembly. Kit comes with water repellent filter.

Yamaha Part No.  
Flame Arrestor, Power Filter Kit GP1300R (60T) **RY1312**

# PERFORMANCE FILTER KITS FOR FOUR STROKE MOTORS

## FOR ADDITIONAL 4-STROKE PRODUCTS SEE THE FOUR STROKE SECTION



### R&D 12F/15F FLAME ARRESTOR

The R&D filter kit will unleash horsepower trapped in the restrictive stock air box. The exclusive light-weight filter design couples to the OEM throttle body, and is engineered with a large plenum to deliver massive cubic air volume and improved air speed. Kit comes complete with all necessary hardware.

<u>Kawasaki</u>	<u>Part No.</u>
R&D 12F/15F Flame Arrestor (Replacement for R&D #215-15010)	215-15011



### R&D REPLACEMENT PERFORMANCE FILTER

The new R&D Replacement Performance Filter replaces the stock restrictive perforated filter plate and allows for improved airflow. Amounts directly into the stock filter box and retains the OEM look. The improved airflow increases throttle response, RPM, and top speed.

<u>Kawasaki</u>	<u>Part No.</u>
STX-12F/15F	215-15000



### RIVA ULTRA LX/STX-F PERF. POWER FILTER KIT

- Increases airflow and power.
- Installs easily.
- Mounts directly onto stock throttle body.
- Built to our specifications by K&N.
- Includes two smaller K&N filters for engine breather hoses and water repellent pre-filter cover for primary filter.

<u>Kawasaki</u>	<u>Part No.</u>
Performance Power Filter	RK13085



### R&D POWER PLENUM FLAME ARRESTER

The R&D High Flow Power Plenum replaces the restrictive stock flame arrester allowing more improved airflow, why? Because more air flow with less restriction means more power!

<u>Yamaha</u>	<u>Part No.</u>
FX 140/Cruiser FX HO/Cruiser	200-00144



### R&D HIGH FLOW POWER PLENUM AIR BREATHER

The R&D High flow breather is a direct replacement for the stock breather in the OEM air box. Water tested to deliver improved throttle response, acceleration and top speed with 50-100 RPM increase.

<u>Yamaha</u>	<u>Part No.</u>
FX 140/Cruiser FX HO/Cruiser	200-00143



### VELOCITY STACK KIT

The R&D Velocity Stack Kit is a direct bolt-on kit that replaces the restrictive OEM stacks. Designed to increase air velocity into the throttle bodies producing improved throttle response and top end speed. Easily installs with OEM hardware.

<u>Yamaha</u>	<u>Part No.</u>
FX 140/Cruiser FX HO/Cruiser	206-00140



### VX110 PERFORMANCE AIR FILTER KIT

The new R&D Performance Air Filter for the VX 110 is now available. The R&D High Flow Filter design replaces the restrictive stock filter inside the stock air box, allowing improved air flow. Why? Because more air flow means more power and improved performance.

<u>Yamaha</u>	<u>Part No.</u>
VX110 for Stock Carb Air Box	200-00110



### VX110 POWER FILTER KIT

Screen-type filter element replaces restrictive stock air filter. Extended intake tube draws cooler air into engine significantly improving performance. Includes pre-filter.

<u>Yamaha</u>	<u>Part No.</u>
VX110 Power Filter Kit	RY13030

