



INDEX

A	Air Filters . 28, 29, 31, 32, 33, 34, 38 Air Filter Adapters. 30-31 Aluminum Handle Pole 134-138 Anchors 176 AP Seat Covers/Mats 152-154 Aquavein Intake Grates 92 Aqua Step 167 ATI Grips 148	B	Back Deflector 173 Batteries. 119 Battery Maintainers 118, 201 Beach House Sponsons. 98-99 Beach Stands 187 Bilge Fittings 128 Bilge Pumps. 128 Bilge Switches 130 Boyesen Reeds 25-26 Buoys 176 Bypass Fittings 126	C	Carburetor Adapters 30-31 Carburetor Rebuild Kit. 3, 9 Carburetors 2, 8, 10, 11 Carbon Tech Reeds 24 Carburetor Kit 10-11 CDI 108, 111-112 Charging Flywheel. 113 Clutch Washers 36 Clymer Repair Manuals. 193 Coils. 107, 117 Connecting Rods 58-59 Covers/Covercraft 166 Crankshaft Bearings 59 Crankshaft Oil Seal Kits. 60 Crankshafts 60 Crankshaft Webs 60	D	Decals. 138, 168-169 Drive Couplers 104-105 Driveshaft & Parts. 102-105 Drop Nozzle 144-145 Duck Bill Drain System. 131-132	E	Enhancer (MSD) 108 Engine Keepers 47	F	Factory Pipe Parts 72-73 Factory Zero Launcher 186-187 Flow Control Valve. 76, 127 Flush Kits 124-125 Flywheels 106, 113-114 Four Stroke Intake 33-44 Fuel Filters 16-17 Fuel Line 18 Fuel Pick Up 16 Fuel Pumps 20, 41	G	Gas Caps. 163 Gaskets. 60-70 Gloves 170 Goggle Grip 172 Grips 148-151	H	Handle Bars 142-143	I	Handle Poles 134-139 Handle Pole Pivot Mounts 139 Handle Pole Springs 139 Hanger (Dripping Wet). 170 Hardline Numbers. 164-165 Hardware 194-195 Heads 49-51 Hood Seals 160 Hood System/Inserts 160 Hull Insert Repair Kit 95 Hunsacker Utility Jug 188 Hydro Turf 156-158	J	Jets 6, 8 Jet Trim Seat Covers 155 Jumper Cables. 119	K	K&N Air Filter Adapters 30-31 K&N Filters 28-31 Keihin Carburetors 8-9	L	L.A. Sleeve 52-55 Lanyards 174-175 Leg Deflectors 173 Linkages 14	M	Mats. 153-154, 156-158 Mikuni Carburetors 2 Mikuni Parts 3-7 Monkey Grip Mounts 46-47 Moto Tassinari 23 Motor Mounts 46-47 MSD 106-109	N	Needle & Seat 6, 9 NGK Spark Plugs & Caps 122-123 Nose Bushings. 162 Nozzles. 91, 144-145 NuJet Impellers 85 Numbers. 164-165	O	ODI Grips 150-151 Oil Extractor. 45, 189, 203 Oil Filters 45 Oil Injection Block Off 21 OPAS Block Off 101 Outerwears Pre-Filter 29	P	Pistons 52-56 Pop-off Gauges 3 Power Plenum 32, 33 Primer Kits 19 Prox Pistons. 56 Pump Cone. 89-90 Pump Housing & Wear Rings 103-104 Pump Repair Parts. 102-105 Pump Wedge 91	R	Reed Spacers 27 Reed Stuffers. 26 Reed Valves 24-26	S	Repair Manuals 193 Rescue Streamer. 173 Rev Limiter. 100, 105 Ride Plates 95-97 Riva 4-Stroke Parts 34-44 Rotary Valves. 22 Rotary Valve Shafts 22 RRP Handlepole & Parts 134-135 Rule Pumps 128	T	Seat Covers 152-155, 159 Shaft Repair Parts 102-105 Silicon Couplers 71-73 Skat Trak Impellers 81-84 Sleeves 52-55 Solas Impeller. 86-87 Solenoids. 109, 116 Spark Plugs 122-123 Spigot Mounts Flanges 20 Splash Guards. 159 Sponsons 98-101 Sportsstuff 185 Starter Motors. 114-115 Stator Coils 117 Steering Cables 133 Steering Systems 135-143 Sunglasses 172 Supercharger Parts 34-42 Switches. 107, 120-121, 130 Switch Holders. 121	V	Tachometers 118 Tau Ceti Filters. 29 Thermostat Kit 37 Three Bond 67, 206 Throttle Brackets 15 Throttle Cables 31 Throttle Drums. 15 Throttle Levers 146-147 Tie Downs 190 Tools 196-204 Tow Ropes. 179 Trailer Accessories. 191 Trim Tabs 96 T-Shirts 168-169 Turn Plates 135-140	W	V Force 3 Reeds 23 Versiplug 132 Video Tapes 171 Water Injections 78, 109 Water Line 126, 196 Water Strainers 127 Water Toys & Ropes. 179-185 Wet Wolf Adjust-a-Thrust. 90 Wiseco 52-55 Worx Intake Grates 93 Worx Ride Plates. 97 Worx Sponsons 100 Wrist Pin Bearings. 57
----------	---	----------	--	----------	---	----------	---	----------	---	----------	--	----------	---	----------	-------------------------------	----------	--	----------	---	----------	--	----------	--	----------	--	----------	--	----------	--	----------	--	----------	---	----------	--	----------	---	----------	--	----------	---

INTAKE SYSTEMS
ENGINE/GASKETS
EXHAUST
DRIVE LINE HANDLING
ELECTRICAL
WATERLINE /BILGE
STEERING & CONTROLS
BODY
ACCESSORIES
SERVICE TOOLS /HARDWARE
CHEMICAL



MIKUNI CARBURETORS

HI-PERFORMANCE SUPER BN

Extended Throttle Shaft Without Choke Shaft



38MM

Part # **53-2050**
Mikuni # BN38-34-8113



44MM

Part # **53-2060S**
Mikuni # BN44-40-8067



44MM

Part # **53-2060**
Mikuni # BN44-40-8052



46MM

Part # **53-2065**
Mikuni # BN46-42-8002



OEM REPLACEMENT SUPER BN

Regular Throttle Shaft With Choke Shaft

**** Direct replacement of OEM Carburetors at a fraction of OEM cost. ****

MAG-SIDE



40MM - I-SERIES

MAG-SIDE (FRONT)

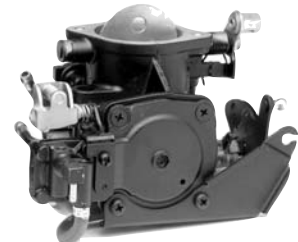
Part # **53-2085** Mikuni # BN40I-38-26

PTO-SIDE (REAR)

Part # **53-2090** Mikuni # BN40I-38-27

Sea Doo 720 GTI, GTS, GS, GSI '98, 800 GTX, GSX '96-'00, 800 SPX 97-99, 800 XP '95-'99, 951 GSX LTD '97

PTO-SIDE



38MM

Part # **53-2063**
Mikuni # BN34-28-8010

Yamaha,
Wave Runner 500 88-89
Wave Jammer 500 88-89



44MM - I-SERIES

Part # **53-2080**
Mikuni # BN40I-38-24

Sea Doo 720,
GTI, GTS, GS, GSI, '97



44MM

Part # **53-2062**
Mikuni # BN44-40-43

Yamaha Superjet,
Wave Blaster, Tigershark

DUAL CARBURETOR SET

46MM - I-SERIES

Part # **53-2095**
Mikuni # BN461-42-B4
SeaDoo 951 - GSX, GTX, XP-LTD, '98-01, XP'00, RX, LRV

Note: Sold as a fully assembled dual carburetor set.



INTAKE SYSTEMS

ENGINE/GASKETS

EXHAUST

DRIVE LINE HANDLING

ELECTRICAL

WATERLINE/BILGE

STEERING & CONTROLS

BODY

ACCESSORIES

SERVICE TOOLS/HARDWARE

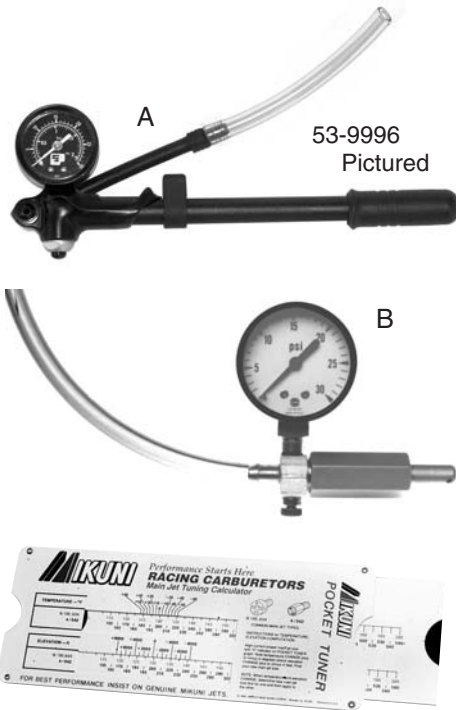
CHEMICAL



GENUINE CARBURETOR REBUILD KITS

Kits include all necessary gaskets, diaphragms, and hardware required to disassemble and rebuild Mikuni carburetor.

Mikuni	Diaphragm Cover	Part No.
Super BN 38mm, 44mm, 46mm I Series 38/40 *Sea Doo Pre 97, Kawasaki 750 98-02, 800 SX-R 03-08 and ALL Mikuni Performance Super BN Square Body 38mm, 44mm and 46mm carbs.	Square	53-2114
I Series 46mm *Sea Doo 951 98 and newer	Square	53-2115
I Series 44mm *Yamaha GP800 98-99, GP 800R 00-05, XL 800 01, XLT 800 02-04, GP 1200R 00-02, XL1200 Limited 99-00 and XLT 1200 01-05	Square	53-2117
BN 38mm, 44mm *BN carbs are "Old Style/Round Body" with round diaphragm covers	Round	53-2110



POP-OFF GAUGE

For Accurate adjustment of pop off pressure levels.

Description	Part No.
A Mikuni Gauge 30 Lbs.	53-9996
60 Lbs.	53-9996-60
100 Lbs.	53-9996-100
B Aftermarket Thumb Operated Gauge	53-9995



MIKUNI TOOL KIT

This handy little kit contains all the tools necessary to make jetting change, perform normal maintenance as well as disassemble and rebuild any Mikuni carburetor.

MIKUNI POCKET TUNER

A handy pocket-size slide calculator which can be used to determine required jetting changes in Mikuni carburetors due to ambient temperature, altitude or both.

Description	Part No.
Mikuni Pocket Tuner	53-9988

Description	Part No.
Mikuni Tool Kit	53-9989

MIKUNI SUPER BN SPECIFICATIONS

Hot Products Part #	Carb.	Low Speed Jet	High Speed Jet	Needle Valve	Arm Spring (grams)	Low Speed Adjuster	High Speed Adjuster	Choke or Primer	Color
53-2050	BN38-34-8113	65	107.5	2.0	115 gr.	1.0	1.5	Primer	Silver
53-2060	BN44-40-8052	100	125	2.3	65 gr.	1.0	1.5	Primer	Black
53-2060S	BN44-40-8067	120	140	2.5	80 gr.	1.0	1.5	Primer	Silver
53-2065	BN46-42-8002	120	150	2.5	80 gr.	1.0	1.5	Primer	Silver
53-2062	BN44-40-43	120	115	1.5	115 gr.	1.0	.75	Choke	Black
53-2063	BN34-28-8010	77.5	80	1.5	65 gr.			Choke	Black
53-2080	BN401-38-24	70	167.5	1.5	95 gr.	1.25	closed	Choke	Black
53-2085	BN401-38-26	67.5	140	1.5	95 gr.	1.25	closed	Choke	Black
53-2090	BN401-38-27	67.5	142.5	1.5	95 gr.	1.25	closed	Choke	Black
53-2095	BN461-42-B4	77.5	162.5	2.0	95 gr.	1.25	closed	Choke	Black

INTAKE SYSTEMS
 ENGINE/GASKETS
 EXHAUST
 DRIVE LINE HANDLING
 ELECTRICAL
 WATERLINE /BI/GE
 STEERING & CONTROLS
 BODY
 ACCESSORIES
 SERVICE TOOLS /HARDWARE
 CHEMICAL



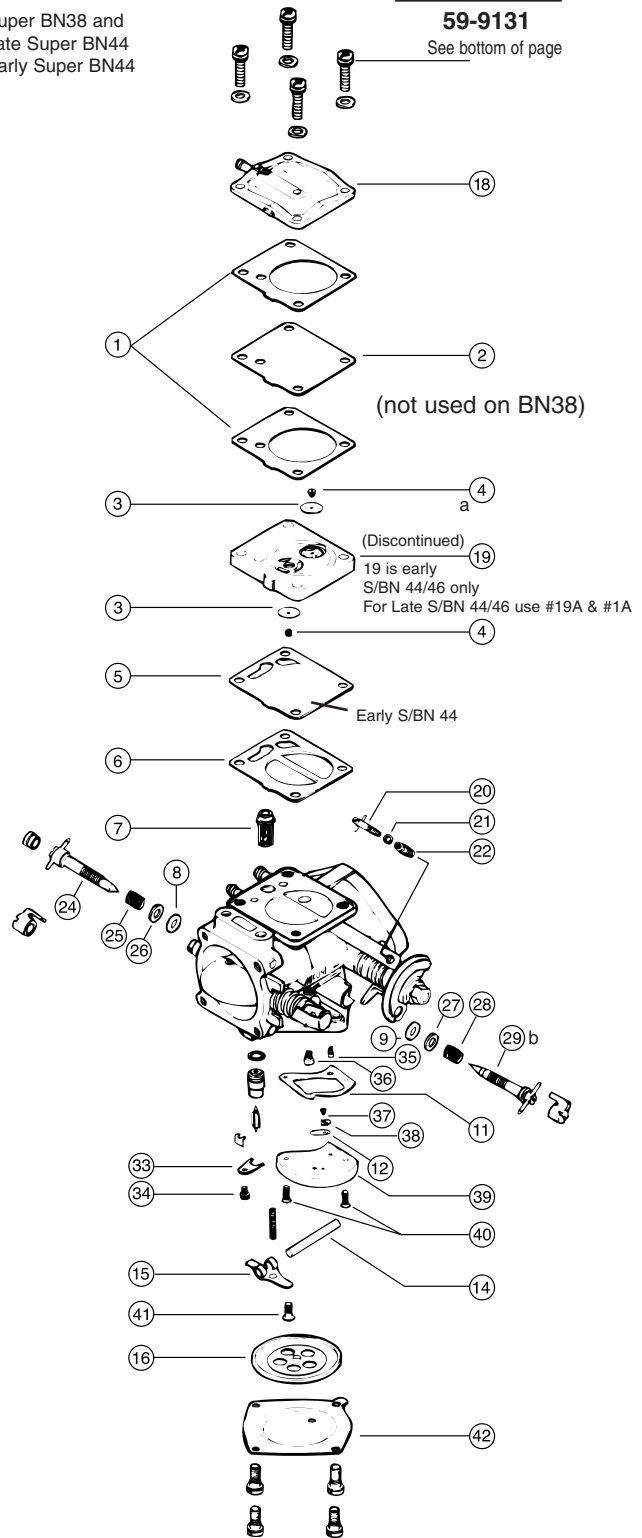
SUPER BN 44/46

Socket Bolt Kit

59-9131

See bottom of page

- * Super BN38 and Late Super BN44
- ** Early Super BN44



MIKUNI GENUINE PARTS SUPER BN38 / BN44 / BN46

Diagram No.	Description	Mikuni Part No.
1.	Gasket Pump (2)	.BN38/547
1a.	O-Ring*	.616-72001
2.	Diaphragm, Pump (Clear)	.BN34/97
3.	Check Valve (2) (Clear)	.BN34/124
4.	Grommet, Check Valve (2)	.BN34/125
5.	Diaphragm, Damper (large hole)**	.BN34/100
5a.	Diaphragm, Damper (small hole)*	.BN34/129
6.	Gasket, Damper**	.BN34/101
6a.	O-Ring*	.616-92007
7.	Filter	.BN44/146
8.	O-Ring, Hi Speed	.B30/305
9.	O-Ring, Low Speed	.MD12/16
11.	Gasket Valve Body	.BN34/123
12.	Check Valve (Clear)	.BN34/107
14.	Pin, Arm	.VM30/97
15.	Arm (Stainless)	.BN38/534
16.	Diaphragm Assembly	.BN44/145
18.	Cover Pump	.BN34/95B
19a.	Body Assembly Pump* (Must use w/O-Ring 1A)	.BN34/128
20.	Stop Screw, Idle**	.BN44/109
20a.	Stop Screw, Idle*	.BN34/82
21.	Washer (Aluminum - Same as #26)	.BN38/39
22.	Spring, Idle**	.BN38/341
22a.	Spring, Idle (Same as #25)*	.BN38/344
24.	Adjuster, Hi Speed (with Cross Bar)	.BN44/167
25.	Spring, Hi Speed (Same as #22a)	.BN38/344
26.	Washer, Hi Speed (Aluminum - Same as #21)	.BN38/39
27.	Washer, Low Speed (Aluminum)	.BN38/172
28.	Spring, Low Speed	.BN38/343
29a.	Adjuster, Low Speed (with Cross Bar) 38mm	.BN38/477
29b.	Adjuster, Low Speed (with Cross Bar) 44mm	.BN38/166
33.	Plate, N.V. Retainer	.BN34/117-GG
34.	Screw with washer	.CW2-0307-G
35.	Low Jet, 30-160 in increments of 5	.N100.606-SIZE
36.	Main Jet, 30-260 in increments of 5	.N102.221-SIZE
37.	Screw	.BV15/121-05-GG
38.	Plate, Valve	.BN34/108-GG
39.	Valve Body Assembly	.BN44/165
40.	Screw (2 pcs)	.C5-0414-G
41.	Screw	.C6-0308-G
42.	Cover (Stainless)	.BN44/147

* Super BN38 and Late Super BN44

** Early Super BN44



SUPER BN CARBURETOR TUNING MANUAL

For the watercraft tuner working with
Super BN series carburetors.

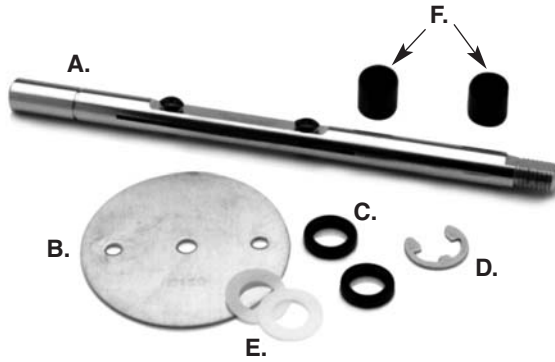
Description	Part No.
Mikuni Manual	53-9999



CARBURETOR SOCKET BOLT KIT

Replace the stock phillips bolts on
carbs with stainless steel socket head bolts.

Description	Part No.
Mikuni Super BN	59-9131



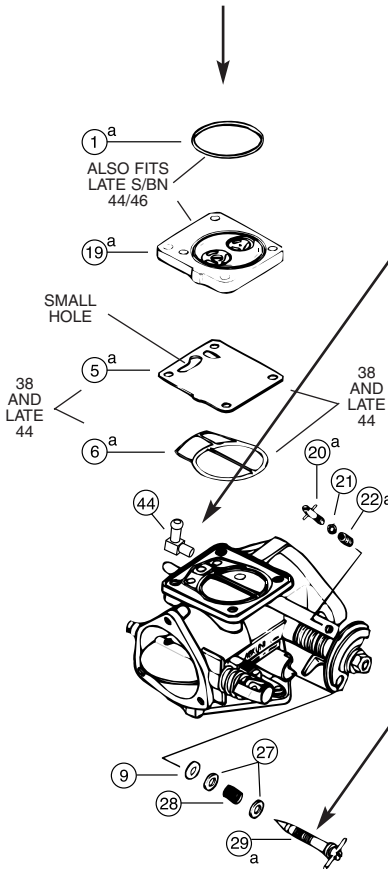
THROTTLE VALVE KIT

Description	Part No.	Mikuni Part No.
Throttle valve kit for 44mm	45	MK-BN/044 TV
Throttle valve kit for 46mm	46	MK-BN/046 TV
Throttle valve kit for 38mm	47	MK-BN/038 TV

THROTTLE SHAFTS AND VALVES

Description	Part No.	Mikuni Part No.
A. Super BN 44mm Throttle Shaft (Extended)	THS-4446	703-89004
B. Super BN 44mm #120 Throttle Valve	V44-120	BN44/06-120
B. Super BN 46mm #120 Throttle Valve	V46-120	818-46009-120
C. Super BN 38/44/46mm Throttle Shaft Seal	THSS	N167.126
D. Super BN 38/44/46mm Throttle Shaft Clip (Standard)	THSC	BN38/566
D. Super BN 38/44/46mm Throttle Shaft Clip (Heavy Duty)	THSCHD	MK-BN/005
E. Super BN 38/44/46mm Throttle Shaft Washer (Nylon)	THSW	N114.077
F. Super BN 38/44/46mm Throttle Shaft Bushing	49	BN38/569
Super BN 38/44/46mm Throttle Shaft Screw	THVS	

Super BN 38
Also used in late style Super BN 44



90° FUEL INLET FITTING (PRESS IN)

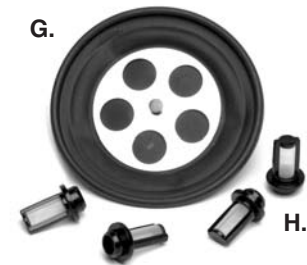
Description	Diag. #	Part No.
90° Fuel Inlet Fitting	44	DF44-2/70



ADJUSTER WITH CROSS BAR

Description	Diag. #	Part No.
High Speed 38/44	24	BN44/167
Low Speed 38	29a	BN38/477
Low Speed 44	29b	BN38/166

(Does not fit Yam OEM 44mm carb)



DIAPHRAGM AND FILTER

Description	Diag. #	Part No.
G. Diaphragm Assembly	16.	BN44/145
H. Super BN Filter	7.	BN44/146



ULTIMATE CARB GASKETS

Thick "Green" gaskets.

Mikuni	Part No.
38mm	9230
40mm "I" Series	9235
44mm	9240
46mm	9250
48mm	9252
50mm	9257
48mm SD951 I Series	6740

INTAKE SYSTEMS
ENGINE/GASKETS
EXHAUST
DRIVE LINE HANDLING
ELECTRICAL
WATERLINE /BI/GE
STEERING & CONTROLS
BODY
ACCESSORIES
SERVICE TOOLS /HARDWARE
CHEMICAL



PARTS STAMPING This marking on a jetting part is your quality assurance guarantee it is a genuine Mikuni component. **DO NOT ACCEPT SUBSTITUTES.**



CARBURETOR JETS
Mikuni Low Jets
P/# (N100.606-size)

Size:	30	95
	32.5	97.5
	35	100
	37.5	102.5
	40	105
	42.5	107.5
	45	110
	47.5	112.5
	50	115
	52.5	117.5
	55	120
	57.5	122.5
	60	125
	62.5	127.5
	65	130
	67.5	132.5
	70	135
	72.5	137.5
	75	140
	77.5	142.5
	80	145
	82.5	147.5
	85	150
	87.5	155
	90	160
	92.5	

CARBURETOR JETS
Mikuni Main Jets
P/# (N102.221-size)

Size:	30	95	160
	32.5	97.5	162.5
	35	100	165
	37.5	102.5	167.5
	40	105	170
	42.5	107.5	172.5
	45	110	175
	47.5	112.5	177.5
	50	115	180
	52.5	117.5	182.5
	55	120	185
	57.5	122.5	187.5
	60	125	190
	62.5	127.5	195
	65	130	200
	67.5	132.5	205
	70	135	210
	72.5	137.5	215
	75	140	220
	77.5	142.5	230
	80	145	240
	82.5	147.5	
	85	150	
	87.5	152.5	
	90	155	
	92.5	157.5	



GENUINE MIKUNI CARB COMPARTMENT KIT

Description	Part No.
Dealer Compartment Kit*	53-2120
Compartment only	53-2122

* Dealer Compartment Kit consists of:
4 Each of Needle and Seat 1.5/2.0/2.3/2.5
4 Each of Arm Spring 65/80/95/115gm
5 Each of Low Jets 67.5/70/72.5/75/77.5
 87.5/90/92.5/95/97.5/100/102.5/105/107.5/110
5 Each of Main Jets 105/110/115/120/125
 130/135/140/145/150/155/160

OLD TYPE NEEDLES & SEATS

**ROUND DIAPHRAGM COVER
STANDARD BN
OLD TYPE, STANDARD METAL TIP**

— Screw in Type —



Description	Part No.	Mikuni No.
1.5	53-2500	VM26/26-1.5
2.0	53-2501	VM26/26-2.0
2.3	53-2502	VM26/26-2.3
2.5	53-2503	VM26/26-2.5
2.8	53-2504	VM26/26-2.8

NEW TYPE NEEDLES & SEATS

SQUARE DIAPHRAGM COVER SUPER BN (NEW TYPE)

— Push in Type —



VITON TIP		
Recommended for Gas Fuel Applications		
Description	Part No.	Mikuni No.
1.2	—	—
1.5	53-2600	786-35015-1.5
1.8	53-2608	786-35015-1.8
2.0	53-2601	786-35015-2.0
2.3	53-2602	786-35015-2.3
2.5	53-2603	786-35015-2.5

STANDARD METAL TIP		
Recommended for Alcohol Fuel Applications		
Description	Part No.	Mikuni No.
1.2	53-2599	786-35018-1.2
1.5	53-2598	786-35018-1.5
1.8	53-2597	786-35018-1.8
2.0	53-2596	786-35018-2.0
2.3	53-2595	786-35018-2.3
2.5	53-2594	786-35018-2.5

MIKUNI ARM SPRINGS

Description	Part No.	Mikuni No.
65gm	53-2614	730-03030
80gm	53-2613	730-03033
95gm*	53-2615	730-03034
*This 95gm spring is for Sea Doo BN 46l Carbs Only!		
95gm	53-2612	730-03027-T
115gm	53-2611	730-03027

POP-OFF PRESSURE CHART

Part. No.	53-2611	53-2612	53-2613	53-2614
Arm Springs	115 grams	95 grams	80 grams	65 grams
Needle Valve Size	1.5	55 p.s.i.	43 p.s.i.	38 p.s.i.
	2.0	32 p.s.i.	25 p.s.i.	21 p.s.i.
	2.3	22 p.s.i.	20 p.s.i.	17 p.s.i.
	2.5	19 p.s.i.	17 p.s.i.	14 p.s.i.
Color	Platinum*	Dull Silver	Black	Shiny Silver

*The new color "platinum" color is due to increasing emission regulations in Japan. The new treatment process of the springs creates the new color.



INTAKE SYSTEMS
ENGINE/GASKETS
EXHAUST
DRIVE LINE HANDLING
ELECTRICAL
WATERLINE /BILGE
STEERING & CONTROLS
BODY
ACCESSORIES
SERVICE TOOLS /HARDWARE
CHEMICAL

MIKUNI GENUINE PARTS SUPER BN 46 "I"



SUPER BN 46 "I" TYPE CARB

Diagram No.	Description	Mikuni Part No.
4.	Grommet, Check Valve (2)	BN34/125
7.	Filter	BN44/146
8.	O-Ring, Hi Speed (2)	BN30/305
9.	O-Ring, Low Speed (2)	MD12/16
11.	Gasket Valve Body	BN34/123
12.	Check Valve (Clear)	BN34/107
14.	Pin, Arm	VM30/97
15.	Arm (Stainless)	BN38/534
16.	Diaphragm Assembly	BN44/145
61.	Gasket, Pump	BN46I/13
62.	Diaphragm, Pump (Clear)	BN46I/14
63.	O-Ring	616-73002
64.	Check Valve (2)	BN46I/11
66.	Diaphragm, Damper	BN46I/34
67.	Diaphragm, Damper (clear)	BN46I/15
68.	O-Ring	616-73003
69.	O-Ring, Needle Valve	KV/10

53-2115 BN46 I Rebuild Kit

21.	Washer, Aluminum (3)	BN38/39
25.	Spring (2)	BN38/344
27.	Washer, Aluminum (2)	BN38/172
28.	Spring, Low Speed	BN38/343
29b.	Adjuster, Low Speed	BN38/166
33.	Plate, Needle Valve Retainer	BN34/177-GG
34.	Screw with Washer	CW2-0307-G
37.	Screw	BV15/121-05-GG
38.	Plate, Valve	BN34/108-GG
39.	Valve Body Assembly	BN44/165
40.	Screw (2)	C5-0414-G
41.	Screw	C6-0308-G
42.	Cover (Stainless)	BN44/147
70.	Screw with 2 Washers (4)	BN34/120-35
73.	Stop Screw, Idle	BN38I/40
76.	Screw (4)	C2S-0514
77.	Diaphragm, Accelerator. Pump	BN40I/22
79.	Body Assembly, Pump	BN46I/49



SA-300

SA-200

SA-100

ADJUSTER WITH CROSS BAR

This allows simple tuning adjustments, which is not possible with oem screw.

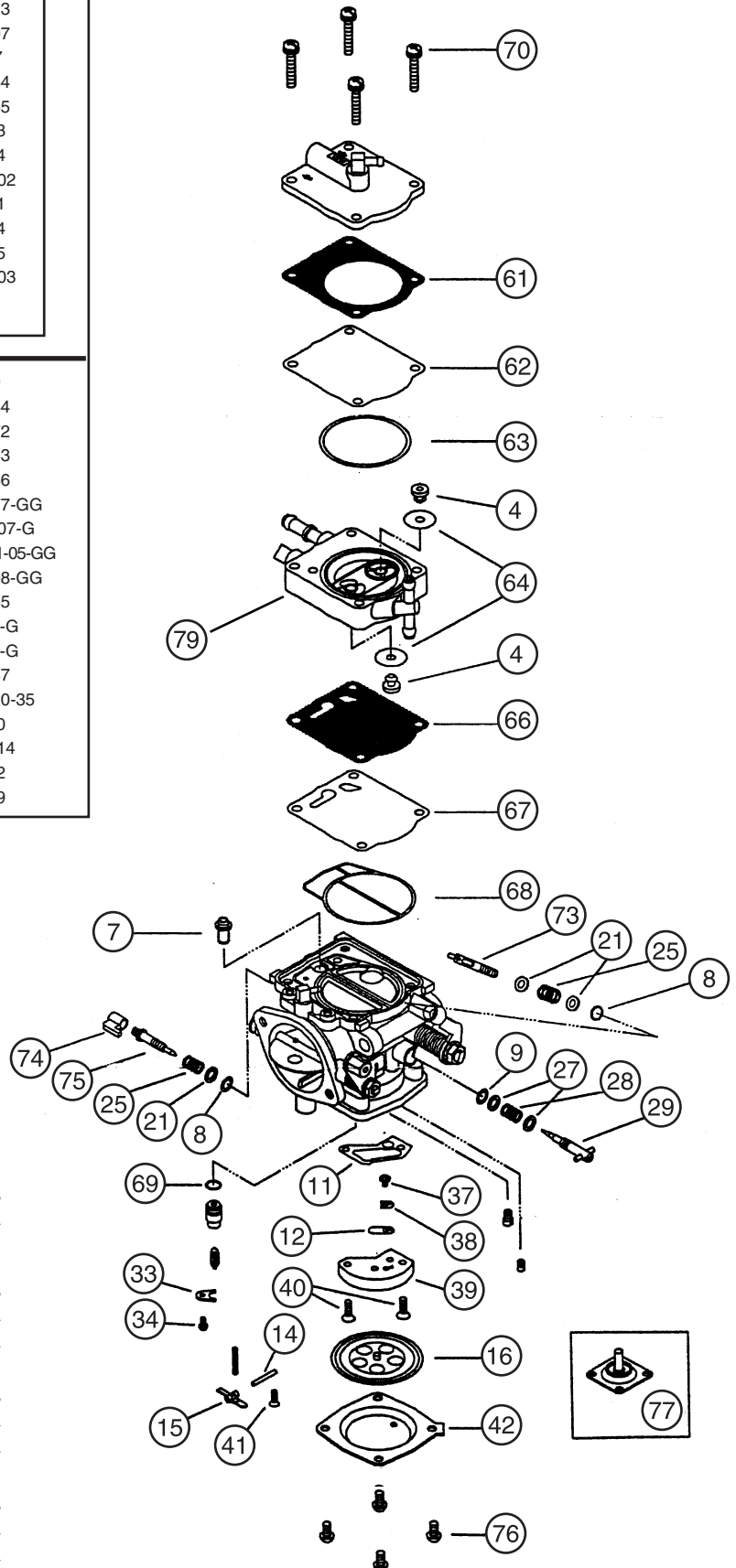
"I" series 44/46, OEM Yam GP800 & SD 951	Part No.
High Speed cross bar screw	SA-100

OEM Yamaha Carb, XL1200LTD, XLT1200, GP1200R	Part No.
Low Speed cross bar screw	SA-200
High Speed cross bar screw	SA-300

OEM Kawasaki Carb, Kawasaki 800SX-R	Part No.
Low Speed cross bar screw	SA-500
High Speed cross bar screw	SA-100

OEM Yamaha Carb, Superjet 2004+	Part No.
Low Speed cross bar screw*	SA-700
High Speed cross bar screw*	SA-800

*Choke must be removed to install SA-700 and SA-800



INTAKE SYSTEMS
ENGINE/GASKETS
EXHAUST
DRIVE LINE HANDLING
ELECTRICAL
WATERLINE /BI/GE
STEERING & CONTROLS
BODY
ACCESSORIES
SERVICE TOOLS /HARDWARE
CHEMICAL

KEIHIN RACING CARBURETOR

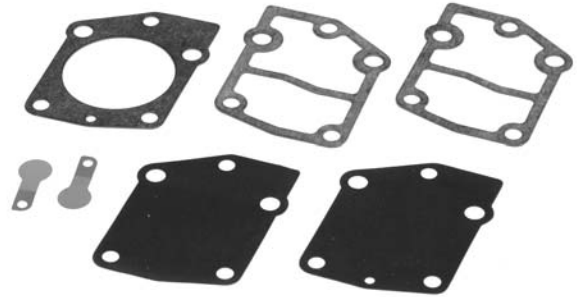
INTAKE SYSTEMS
ENGINE/GASKETS
EXHAUST
DRIVE LINE HANDLING
ELECTRICAL
WATERLINE/BILGE
STEERING & CONTROLS
BODY
ACCESSORIES
SERVICE TOOLS/HARDWARE
CHEMICAL



KEIHIN OEM REPLACEMENT CARBURETOR

Polaris Hurricane 700
1996-97
39 mm

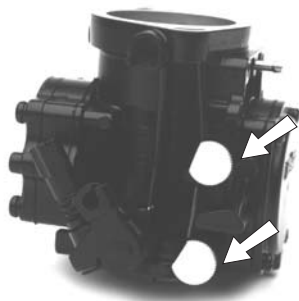
Description	Part No.
OEM Replacement	53-2030



KEIHIN FUEL PUMP REBUILD KIT

Includes all parts necessary to rebuild the Keihin fuel pump. Fits Kawasaki 650SX 1986-91, 650X2 1989-91.

Description	Part No.
Fuel Pump Rebuild Kit	53-2105



KEIHIN CARB MIXTURE ADJUSTMENT KNOBS

Billet aluminum, knurled outer, anodized knobs with index reference mark fit on the existing adjustment screws of Keihin 38/40mm carbs to make mixture adjustment easy.

Description	Part No.
Carburetor Adjustment Knobs Fits 38/40mm OEM Type only (does not fit 42mm)	53-9993



ULTIMATE CARB GASKETS

Thick "Green" gaskets.

Keihin	Part No.
38mm	9200
40mm	9205
42mm	9220



CARB SCREW ADJUSTING TOOL

A special 90-degree screwdriver, designed to adjust carburetors of triple-cylinder watercraft.

Description	Part No.
Carb Screw Adjusting Tool	53-9994

CARBURETOR JETS

Keihin Low Jets		Keihin Main Jets	Keihin Main Jets	
P/# (N424-35-size)		P/# (N424-27-size)	P/# (N424-36-size)	
40	88	150	100	148
42	90	155	102	150
45	92	160	105	152
48	95	165	108	155
50	98	170	110	158
52	100	175	112	160
55	102	180	115	162
58	105	185	118	165
60	108	190	120	168
62	110	195	122	170
65	112	200	125	172
68	115	(for CDCV)	128	175
70	118		130	178
72	120		132	180
75			135	182
78			138	185
80			140	190
82			142	195
85			145	200

WHEN ORDERING SPECIFY TYPE AND SIZE. PART NUMBER IS NOT NECESSARY

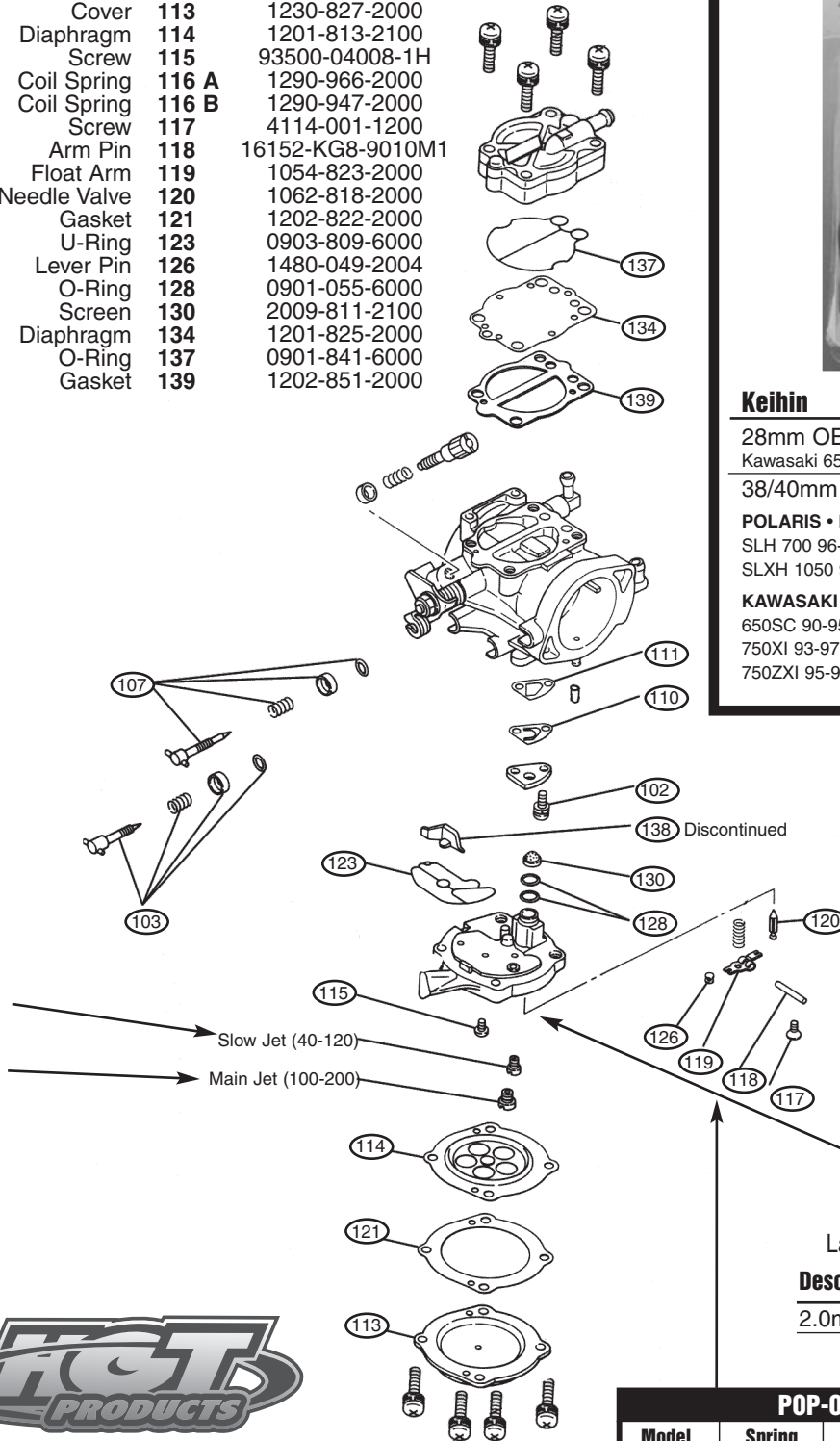


2006 WORLD FINALS • LAKE HAVASU, AZ
PHOTO COURTESY OF JIN OMURA

**GENUINE KEIHIN
CARBURETOR PARTS**



Description	Diagram	Keihin Part No.
Screw	102	N114-03060
Adjust Screw (Main)	103	Z014-0660
Adjust Screw (Slow)	107	Z014-0670
Check Valve	110	1242-809-2000
Gasket	111	1202-823-2000
Cover	113	1230-827-2000
Diaphragm	114	1201-813-2100
Screw	115	93500-04008-1H
Coil Spring	116 A	1290-966-2000
Coil Spring	116 B	1290-947-2000
Screw	117	4114-001-1200
Arm Pin	118	16152-KG8-9010M1
Float Arm	119	1054-823-2000
Needle Valve	120	1062-818-2000
Gasket	121	1202-822-2000
U-Ring	123	0903-809-6000
Lever Pin	126	1480-049-2004
O-Ring	128	0901-055-6000
Screen	130	2009-811-2100
Diaphragm	134	1201-825-2000
O-Ring	137	0901-841-6000
Gasket	139	1202-851-2000



KEIHIN COIL SPRINGS

Description	Part No.	
42mm 40 grm	1290-966-2000	116A
42mm 70 grm	1290-947-2000	116B
40mm 40 grm	1290-992-2000	116C
40mm 70 grm	1290-961-2000	116D

**KEIHIN GENUINE
CARBURETOR REBUILD KITS**

Kits include all necessary gaskets, diaphragms, and hardware required to disassemble and rebuild Keihin carburetor.



Keihin	Part No.
28mm OEM Type Kawasaki 650 SX 1986-91 & 650 X-2 1986-91	53-2100
38/40mm OEM Type & 42mm CDKII	53-2103
POLARIS • Hurricane 700 96-97, SL/SLT 700 96-97, SLH 700 96-97, SL900 96-97, SL/SLTX 1050 96-00, SLXH 1050 98-99, Genesis 99-00, 1200Pro 00, Virage/TX 00	
KAWASAKI • JS440 91-92, JS550SX 91-95, 650TS 89-96, 650SC 90-95, 750SX 92-95, 750SXI 95, 750SS 92-98, 750XI 93-97, 750XIR 94, 750ST 94-95, 750STS 95-97, 750ZXI 95-98, 900ZXI 95-97, 900STX 97-99, 1100ZXI 96-97	



**KEIHIN METERING BLOCK
ASSEMBLIES**

Large high flow needle valve seat assembly.

Description	Part No.
2.0mm	53-2609

POP-OFF PRESSURE CHART

Model	Spring Force	Spring Length	Part Number	Needle Size	Valve Size	Size
CDK II	70gr.(std)	11mm	116B	1.6(std)	1.8	2.0
	40gr.	9.17mm	116A	15psi	13psi	11psi
40mm mid range & 42mm Accp.	70gr.(std)	8.7mm	116D	N/A	N/A	N/A
	40gr.	7.4mm	116C	N/A	N/A	N/A

- INTAKE SYSTEMS
- ENGINE/ GASKETS
- EXHAUST
- DRIVE LINE HANDLING
- ELECTRICAL
- WATERLINE /BIJGE
- STEERING & CONTROLS
- BODY
- ACCESSORIES
- SERVICE TOOLS /HARDWARE
- CHEMICAL



NOVI-TEC PERFORMANCE INTRODUCES NEW PWC CARBURETOR WITH GEN III SONIC BOOSTER TECHNOLOGY

Novi-TEC Performance® is taking their carburetor expertise to a new platform. From the company's on going research and development, Novi-TEC has recently introduced the next evolution of high performance watercraft carburetors with new Generation III booster technology.

After more than a year of testing and race proven results, the new Novi-TEC Generation III booster venturi is ready for release. It is designed to create the most precise high-flow air/fuel delivery system available. The Novi-TEC Generation III design optimally meters air and fuel flowing into the combustion chambers to produce maximum power at all throttle ranges; virtually eliminating hesitation and bogging, while maximizing combustion efficiency.

The new Novi-TEC Generation III booster design offers precise and consistent tuning in all atmospheric conditions and minimizes sonic wave reverse fueling effects. The new design offers maximum performance by maintaining a high flow capacity for today's large displacement engines.

The new Novi-TEC PWC carburetor with Generation III booster technology is virtually a mechanical "Smart Carb".

Novi-TEC Performance is based in Palm Bay, Florida and specializes in the development, testing, and marketing of fuel and engine management perfection for all forms of high-performance recreational vehicles. Novi-TEC Performance was founded by Tim Vaughn bringing over 35 years of successful high performance experience.

Yamaha	Part No.
Yamaha 701/760 Dual 46XR	DY-46XRF-S/S
Yamaha 701/760 Dual 48XR	DY-48XRF-S/S

Kawasaki	Part No.
Kawasaki 750/800 Dual 46XR	DK-46XRF-S/S
Kawasaki 750/800 Dual 48XR	DK-48XRF-S/S

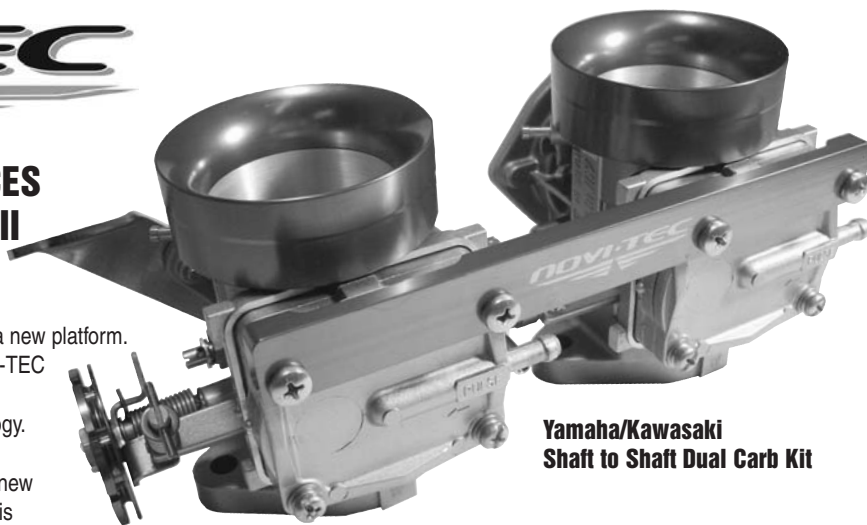
Sea Doo	Part No.
Sea Doo 951 Dual 48XR	DS-48XR-P



RIVA YAMAHA RACING CARBURETOR WITH POWER BOMB FUEL ATOMIZER

Riva Yamaha new racing carburetors feature a short threaded air bell that tapers from a massive 70mm to a true 48mm throttle plate. Starting with proven Mikuni Super-BN carburetors, each one is hand assembled with top shelf components. At the heart of carburetor is Riva's exclusive "Power Bomb" fuel atomizer, providing peak performance under all conditions. Hesitation and bogging are eliminated while delivering explosive acceleration and extreme top speed. Available individually with flange mounting applications..

Description	Part No.
48mm Flange Mount	RY1200R-48-IF
Butterfly Rebuild Kit	RY12-TSRK



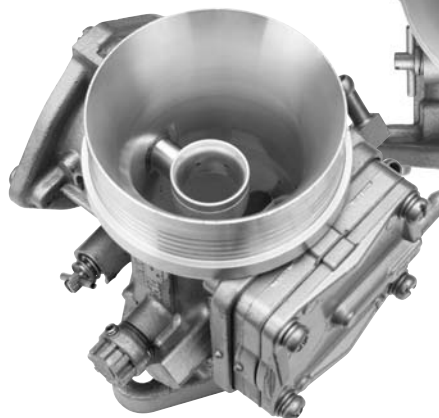
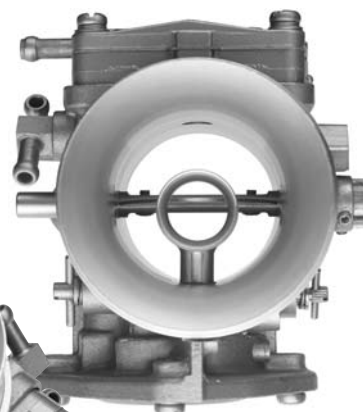
Yamaha/Kawasaki Shaft to Shaft Dual Carb Kit



Novi-TEC Generation III booster design



Sea Doo 951 Dual Carburetor Kit Part# DS-48XR-P



INTAKE SYSTEMS
ENGINE/GASKETS
EXHAUST
DRIVE LINE HANDLING
ELECTRICAL
WATERLINE/BILGE
STEERING & CONTROLS
BODY
SERVICE TOOLS ACCESSORIES/HARDWARE
CHEMICAL



HOT PRODUCTS SEADOO DUAL CARBURETOR KITS

Sea Doo	Carb	Flame Arrestor	Part No.
720	Mikuni 44mm	K&N	53-0915
720	Mikuni 46mm	K&N	53-0916
800	Mikuni 44mm	K&N	53-0925
800	Mikuni 46mm	K&N	53-0926

720 Kits also fit 650 & 580 Engines. Please specify for proper jetting.

All carburetor kits are assembled with the above listed K&N Filters or Tau Ceti Pro Series II Flame Arrestors, the filter size and shape is the best fit based on the watercraft model.



HOT PRODUCTS YAMAHA AND KAWASAKI CARBURETOR KITS

Yamaha	Carb	Flame Arrestor	Part No.
701 W/Rdr / 760 (62T)	Mikuni 44mm	K&N	53-0975
701 W/Rdr / 760 (62T)	Mikuni 46mm	K&N	53-0974
1100/1200	Mikuni 44mm	K&N	53-0980
1100/1200	Mikuni 46mm	K&N	53-0992

* See page 13 for crankcase application chart

Kawasaki	Carb	Flame Arrestor	Part No.
750	Mikuni 44mm	K&N	53-0830
750	Mikuni 46mm	K&N	53-0840

SINGLE CARBURETOR SYSTEMS

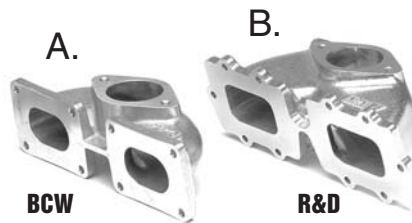
Kawasaki	Carb	Flame Arrestor	Part No.
650 SX/X2	Mikuni 44mm	K&N	53-0650
650 SX/X2	Mikuni 46mm	K&N	53-0660
750 All	Mikuni 44mm	K&N	53-0820
750 All	Mikuni 46mm	K&N	53-0825

All carburetor kits are assembled with the above listed K&N Filters or Tau Ceti Pro Series II Flame Arrestors, the filter size and shape is the best fit based on the watercraft model.



SINGLE INTAKE MANIFOLDS

FITS MIKUNI 44/46 MM



Kawasaki	Part No.
A. 650 All	53-0651
B. 750 All	53-0827



Yamaha	Part No.
701/760 (62T/64X)	RY126M

FREE STYLE SINGLE INTAKE MANIFOLD ADAPTER KIT

This adapter makes a Kawasaki 650 single intake manifold fit on a Yamaha 701 case. Also ideal for Rental Yamaha watercraft for easy tuning.



Description	Part No.
Yamaha 701 Freestyle Intake Adapter Kit for Mikuni 44/46. Sold per set.	53-0652
Use with BCW Intake Manifold Part # 53-0651 listed above	

INTAKE SYSTEMS
ENGINE/GASKETS
EXHAUST
DRIVE LINE HANDLING
ELECTRICAL
WATERLINE /BILGE
STEERING & CONTROLS
BODY
ACCESSORIES
SERVICE TOOLS /HARDWARE
CHEMICAL

DUAL INTAKE MANIFOLDS FOR SEA DOO

FITS MIKUNI 44/46MM AND KEIHIN*



R&D

SEA DOO Part No.
580/650/720 53-0923



R&D

SEA DOO Part No.
XP800 223-80000

*Also fits Keihin



R&D

SEA DOO Part No.
XP800 Direct Flow 223-80001



R&D

SEA DOO Part No.
951 223-95000

Must use with part number 273-95000
R&D Stuffers



2007 WORLD FINALS
LAKE HAVASU, AZ

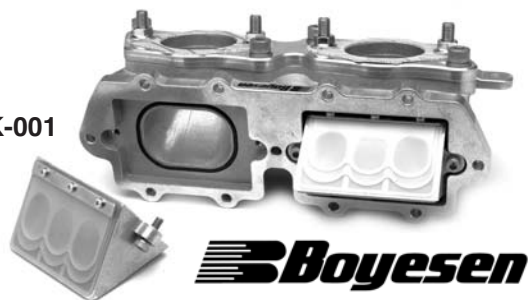
PHOTO COURTESY OF
JIN OMURA

DUAL / TRIPLE INTAKE MANIFOLDS FOR YAMAHA

FITS MIKUNI 44/46MM

BOYESEN EXTREME VELOCITY INTAKE KIT & RAD VALVES

IMK-001



Boyesen



Yamaha	Part No.
701 Superjet 96-08, Extreme Velocity Intake Kit*	IMK-001
Extreme Velocity Intake Manifold Only	IM-001
"EV" RAD Valves Kit (2 Valves per Kit)	RAD-131A
Replacement RAD Reed for RAD-131A	RL131A
Replacement Gasket for RAD-131A	2830

Yamaha	Part No.
701(62T) W/Rdr/760 With Billet Carb. Plate for OEM Reed	222-76000
701(62T) W/Rdr/760 With Billet Carb. Plate for Moto Tassinari Reed	222-76100
Mounting Plate Gasket Center to center 120 mm	12-0010

Yamaha Crankcase Application Chart

6M6	650LX, VXR, Wave Runner III, Super Jet 90-93
61X	Pro VXR, Wave Runner III, GP, Super Jet 94-95, Fx-1, Wave Blaster 93-95, Raider 701 96-97
62T	Super Jet 96-01, Blaster II
64X	Wave Blaster 96-97, GP760, Raider 701/Deluxe/760 94-95, Venture 701/760, XL700/760
63M	Raider 1100, Venture 1100
66E	GP800 Power Valve
65U	GP1200, XL1200, SUV1200
66V	GP1200R, XL1200 LTD/XLT, 99-01 Power Valve



PRO-TEC

Yamaha Part No.
Y701 (62T), Wave Raider/760 **13-2109**



R&D

Yamaha Part No.
1100/1200 (63M/65U) **232-11000**



R&D

Yamaha Part No.
GP800 with stuffers **222-80000**

DUAL / TRIPLE INTAKE MANIFOLDS FOR KAWASAKI FITS MIKUNI 44/46MM



Kawasaki Part No.
800SX-R **231-75146**
With Billet Carb. Plate
for OEM Reed
Mounting Plate Gasket **12-0010**
Center to center 120mm



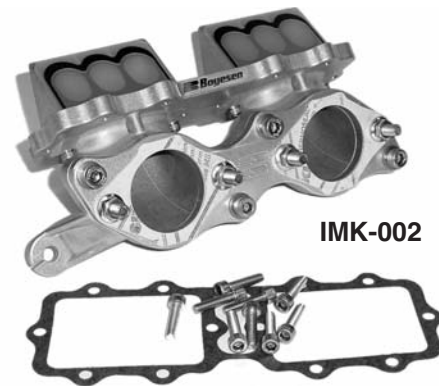
Kawasaki Part No.
800SX-R **231-75148**
With Billet Carb. Plate
for MOTO TASSINARI reed
Mounting Plate Gasket **12-0010**
Center to center 120mm



JetWorks

Kawasaki Part No.
Ultra 150/STX-R **53-0887**
*Sold separately *Use with OEM reed

Boyesen



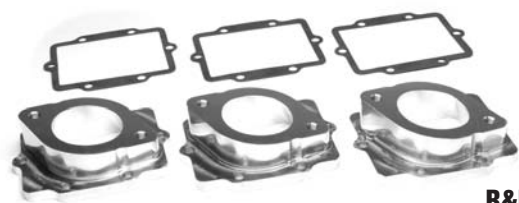
IMK-002

BOYESEN EXTREME VELOCITY INTAKE KIT & RAD VALVES

Kawasaki	Part No.
800SX-R 03-08, Extreme Velocity Intake Kit*	IMK-002
Extreme Velocity Intake Manifold Only	IM-002
"EV" RAD Valves Kit (Single Valve)	RAD-113
Replacement RAD Reed for RAD-113	RL131A
Replacement Gasket for RAD-113	IMG-001

*Kit includes (1) precision cast aluminum intake manifold, (2) "EV" RAD valves, (1) carb adapter plate and all necessary installation hardware.

**HGT
PRODUCTS**



R&D

For Mikuni SBN 44, 46 or 48mm Spigot Mount Carb Applications

Kawasaki Part No.
Ultra 150/STX-R Kit **231-15000**
*Use with M-16 reed only

INTAKE SYSTEMS
ENGINE/GASKETS
EXHAUST
DRIVE LINE HANDLING
ELECTRICAL
WATERLINE /BILGE
STEERING & CONTROLS
BODY
ACCESSORIES
SERVICE TOOLS /HARDWARE
CHEMICAL



CARBURETORS LINKAGE

Linkage Kit	Part No.
Keihin	53-0602
Mikuni	53-0622
OEM Carb.	53-0628



CARBURETORS LINKAGE SLEEVES

Sleeve Only		Part No.
5/8"	16mm	53-9905
3/4"	19mm	53-9906
1"	25mm	53-9916
2-3/16"	56mm	53-9917
6"	152mm	53-9918



LINKAGE INSTALLATION TOOL FOR OEM CARB.

Description	Part No.
Linkage Installation Tool	53-0434



MIKUNI DUAL CARBURETORS LINKAGE KIT

Description	Part No.
Mikuni Dual Linkage Kit	MK-BN/001



THROTTLE ARM LINKAGE & CONVERSION ARM

Description	Part No.
A. Throttle Arm (Middle)	53-0612
B. Throttle Arm (RH)	53-0613



TBM CARBURETOR SHAFT COLLARS

Designed to replace the e-clips that commonly break allowing the carburetor shaft to vibrate side to side damaging the butterfly's and carburetor bodies. Manufactured from stainless steel for corrosion prevention, the two-piece design allows installation without disassembling the carburetors.

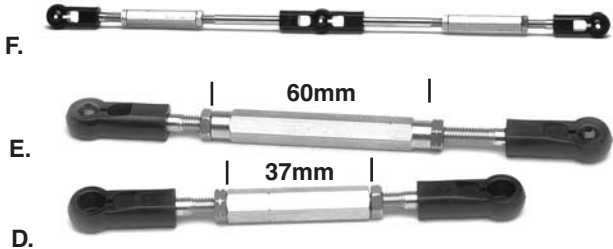
Description	Part No.
Carburetor shaft collars	TBM108



JETWORKS LINKAGE

Using 120mm center to center aftermarket dual S/BN carburetor applications. It is made to have zero backlashes and will not compress after age.

Description	Part No.
120 mm center to center	LK-2



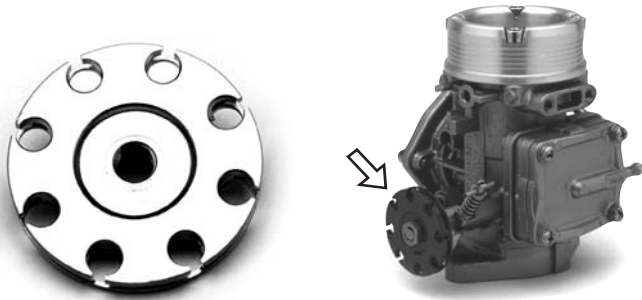
MIKUNI GENUINE OEM STYLE LINKAGE RODS

Description	Part No.
D. Sea Doo XP800	53-0615
E. Sea Doo 951	53-0616
F. Triple Carb Linkage Rod	53-0606



2006 WORLD FINALS • LAKE HAVASU, AZ
 PHOTO COURTESY OF JIN OMURA

THROTTLE CABLE DRUM FOR MIKUNI



Hot Products original drum for Mikuni carburetors allows the use of any throttle cable and bracket on Mikuni carburetors. 8 positions, 18mm throw.

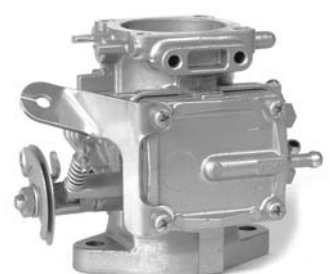
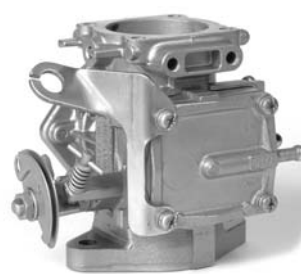
PJS Drums features a center web thin enough to allow use of nut with lock washer. "D" slot match the throttle shaft for a perfect fit. 12 positions and available in 20mm or 25mm throws

Description	Part No.
Hot Products Cable Drum 18mm Throw	53-2622

Description	Part No.
Standard Size (20mm throw)	53-2625
Oversized (25mm throw) For Oil injection and stock carburetors of Yamaha GP/XL	53-2627



THROTTLE CABLE BRACKETS FOR MIKUNI



Diaphragm Cover Mount Throttle Cable Bracket

Recommend for use with Hot Products Cable Drum Part #53-2622 8mm hole.

RY12-TCB	8mm
THRTL-BRKT	10mm
290-00200	10mm

Body Mount Throttle Cable Bracket

53-3310

Kawasaki / Polaris / Tigershark - 10mm Hole

53-3317

Sea Doo / Yamaha / WetJet - 8mm Hole

53-3318



MOTOINE SOFT SPRING FOR MIKUNI CARBS

New Motoine Mikuni spring is 2/3 softer than original spring and reduces thumb and/or finger throttle fatigue.

Description	Part No.
Motoine Soft Spring	MR-00013



LINKAGE INSTALLATION TOOL FOR OEM CARB.

Kawasaki 750/800 throttle cable/choke cable bracket. For use with stock carbs when using the ADA Racing billet girdle head kit. This bracket has the throttle cable mount moved up, so it does not interfere with the girdle bracket.

Description	Part No.
ADA Bracket	KA800BRK-CARB



2007 WORLD FINALS • LAKE HAVASU, AZ
PHOTO COURTESY OF JIN OMURA

INTAKE SYSTEMS
ENGINE/ GASKETS
EXHAUST
DRIVE LINE HANDLING
ELECTRICAL
WATERLINE /BILGE
STEERING & CONTROLS
BODY
ACCESSORIES
SERVICE TOOL /HARDWARE
CHEMICAL



FUEL PICKUP FOR ZXI/STX-R

Provides maximum fuel flow to triple carbs

Description	Part No.
Kawasaki ZXI/STX-R	53-9957



ADA PICKUP FOR ULTRA

Description	Part No.
Kawasaki Ultra	KUFP



BLOWSION FUEL FILLER FOR YAMAHA SUPERJET AND POLARIS OCTANE

Description	Part No.
Billet Dual Pick Up	YAAMAL140
Billet Single Pick Up	YAAMAL141



BLOWSION FUEL FILLER FOR KAWASAKI SX/SXI/SXI-PRO/SX-

Description	Part No.
Billet Dual Pick Up	KASXAL143



BLOWSION RACING FUEL PICKUP FOR KAWASAKI SX/SXI/SXI-PRO/SX-R

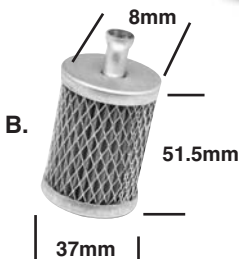
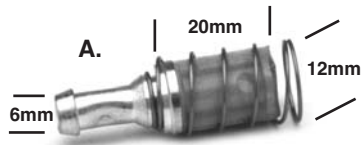
Description	Part No.
Billet Dual Pick Up	KASXAL144



ONE WAY CHECK VALVE

One way vent valve allows fuel to travel in one direction only. 1/4" Fuel Line.

Description	Part No.
One Way Check Valve	53-9941



FUEL TANK FILTER

Description	Part No.
A. Universal Fuel Tank Filter (Replaces Sea Doo #275-500-005)	53-9946
B. Universal Fuel Tank Filter (Replaces Yamaha #8H5-224560-00)	006-516
C. Sea Doo Fuel Filter Tank Filter (Replaces Sea Doo #275-500-089)	006-510



R&D ULTRA 250X DEEP FUEL PICKUP

The R&D Deep Fuel Pickup is designed to maximize fuel volume. The stock fuel pickup is located horizontally in the gas tank three inches above the bottom of the tank. This leaves approximately 5 gallons of unusable fuel in the bottom of the tank. The R&D Deep Fuel Pickup relocates the stock fuel pickup to the bottom of the tank in a vertical position. The new positioning allows for 24 percent more riding time per tank of gas. The deep fuel pickup is an absolute must for offshore racing.

Description	Part No.
R&D Ultra 250X/LX Deep Fuel Pick Up	801-25100



RIVA HIGH VOLUME FILTER

3/8" Fuel Line.

Description	Part No.
3/8" Riva High Volume Filter	RY-0503



2" SLIMLINE WITH BRONZE ELEMENT

Clear nylon housing and bronze 75 Micron Element. 2" length. 1/4" Fuel Line.

Description	Part No.
2" Slimline with bronze	53-9952
Retail sales display card with 20 filters	53-9952D



3" SLIMLINE WITH POLYESTER ELEMENT

Lightweight high flow 90 Micron Polyester Element. 3" length. 1/4" Fuel Line.

Description	Part No.
3" Slimline with polyester	53-9953
Retail sales display card with 20 filters	53-9953D



IN-LINE OIL FILTER

75 Micron Stainless Steel Element. 1.3" diameter, 1/4" Fuel Line. This filter works with fuel and oils. Perfect protection for oil pumps and oil injection engines.

Description	Part No.
Stainless Steel filter	53-9943
Retail sales display card with 20 filters	53-9943D



HIGH-CAPACITY HIGH FLOW FILTER

80 Micron Paper Element. 1.6" diameter, 1/4" Fuel Line.

Description	Part No.
High Flow Paper Filter	53-9945
Retail sales display card with 20 filters	53-9945D



HIGH PERFORMANCE CATALYTIC FILTER

A Fuel filter made of high impact nylon. Clean burning engines, better throttle response and some increase in power and fuel efficiency.

Description	Part No.
Catalytic Filter	53-9948



QUICK DISCONNECT RESTRICTOR

Mikuni main jets thread into the billet part of the restrictor. This kit is used on the return lines of carburetors to fine tune fuel pump pressures.

Description	Part No.
Quick Disconnect Restrictor 1/4"	QD-14



Recommended Main Jets:

Stock Carbs for 1200 (66V) 105
 Novi Carbs for 1200 (66V) 100-120
 Novi Carbs for 701 (61X) 100-120

FUEL RETURN LINE RESTRICTOR

Designed to improve throttle response and reduce lean conditions in power band, our new Fuel Return Line Restrictor installs into fuel return line between carburetors and fuel tank, restricting fuel return rate, increasing pressure to carburetors. Precision-machined billet restrictor is threaded to accept a Mikuni Main Jet (not included) to match your application. For use with OEM and aftermarket carburetors.

Description	Part No.
Fuel Return Line Restrictor	RY12-RLR-14



RIVA FUEL FILTERS

OE replacements fit stock mounting bracket in all Yamaha watercraft these fuel filters also serve as a water separator protecting the motor from water damage

Description	Part No.
OE Replacement filter (all except 66V/E)	RY-0501
OE Replacement filter 66V/E	RY-0502

INTAKE SYSTEMS
 ENGINE/GASKETS
 EXHAUST
 DRIVE LINE HANDLING
 ELECTRICAL
 WATERLINE /BILGE
 STEERING & CONTROLS
 BODY
 ACCESSORIES
 SERVICE TOOLS /HARDWARE
 CHEMICAL



1/4" FUEL LINE & 1/8" PRIMER LINE

Our fuel and primer line is made from a thick walled polyurethane tubing. Both the fuel and primer line is clear blue. Sold per foot or 25 feet packages.

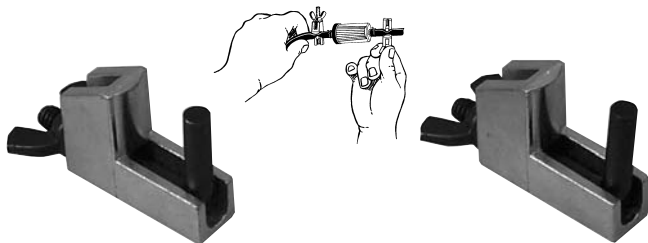
Description	Part No.
Fuel (1/4") per foot	53-9970
Fuel (1/4") - 25 foot package	53-9970-25
Primer Line (1/8") per foot	53-9980
Primer Line (1/8") per foot - 25 foot package	53-9980-25



PRIMER LINE

Double layer constructed fuel hose for primer. Made in Japan. Sold in 25 feet packages only.

Description	Part No.
Primer Line - 25' (I.D. 3mm/O.D. 7mm)	53-9985



HOSE PINCHERS

Quick, easy way to pinch off fuel lines, etc, without damaging the fuel line. Sold two per set.

Description	Part No.
Hose Pinchers	LS22850



HOSE SHEARS

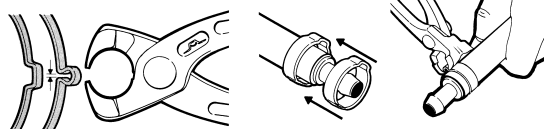
Simply Scissor-action cutter for hose. Cuts clean, straight and no damaged hose ends. A must have tool for every toolbox.

Description	Part No.
Hose Shears	59-4020



FUEL LINE Q/D W/SHUT-OFF VALVE for 1/4" fuel line

Description	Part No.
Fuel Line Q/D w/Shut-off Valve	53-9951



SQUEEZE ON STAINLESS STEEL CLAMPS

Double layer constructed fuel hose for primer. Made in Japan. Sold in 25 feet packages only.

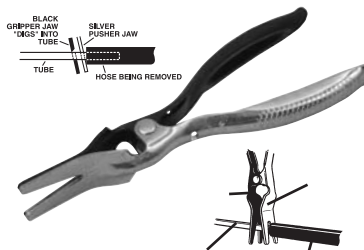
Description	Clamp Size	Part No.
Pincer Tool	-	59-4015
Clamp for 1/4" Hose (10 pcs/pk)	9/16	59-4016
Clamp for 3/8" Water Line (10 pcs/pk)	11/16	59-4017
Clamp for 1/2" Water Line (10 pcs/pk)	13/16	59-4018



HOSE PINCHER

Clamps and holds hoses up to 3/4" inside diameter. Angled jaws close to create a complete seal every time. Jaws are offset for hard-to-reach areas. The handles lock firmly to hold the jaws in closed position.

Description	Part No.
Hose Pinchers	LS23000



HOSE REMOVAL PLIERS

For easy removal of 5/32" to 1/2" (4mm to 14mm) hoses. Engage the tube (line) with the black jaw. This sharpened jaw actually "digs" into the tube to grip it! Squeeze, and the hose is easily pushed off by the silver jaw.

Description	Part No.
Hose Removal Pliers	LS47900



PRIMER KITS

A cure for hard-starting motors. Draws fuel from the fuel line to give the carburetor a blast of fuel for easy starting. Eliminates chokes and adds to battery life. A must on high-performance modified carburetors with eliminated chokes. Hot Products primers are assembled with top-quality materials and include 9 feet of 1/8" blue primer hose to fit sit down craft. USA made top-quality plunger, brass "T" fittings, spigot, caps and zip ties.

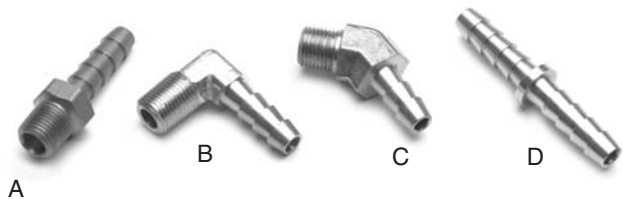
Plunger Primer Kit	Part No.
Mikuni Primer Kit Single	53-9920
Mikuni Primer Kit Dual	53-9928
Mikuni Primer Kit Triple	53-9922
Keihin Primer Kit Single	53-9925
Keihin Primer Kit Dual	53-9929
Keihin Primer Kit Triple	53-9924



Spigot & Cap Kit

Brass T Fitting

Parts Only	Part No.
G. Mikuni Brass Spigot & Cap Kit	53-9921
Mikuni Brass Cap Only	53-9921B
H. Keihin Brass Spigot & Cap Kit	53-9926
Keihin Brass Cap Only	53-9926B
I. Brass T for Dual 1/8 x 1/8 x 1/8	64-0015
J. Brass T for Primer 1/4 x 1/4 x 1/8	64-0017
Primer Line 1/8 (Sold per foot)	53-9980



1/4" HOSE BRASS FITTINGS

Description	Part No.
A. Straight: 1/8" Thread 1/4" Hose	64-0001
B. 90 Degree: 1/8" Thread 1/4" Hose	64-0010
C. 45 Degree: 1/8" Thread 1/4" Hose	64-0065
D. Barb Connector 1/4" I.D.-1/4" I.D.	64-0057



PRIMER ADD ON KITS

Mikuni and Keihin primer add on kits for use with dual and triple carb kits. One add on kit needed for duals, two needed for triples. Kit includes spigot and cap, T-fitting, 6" of 1/8" blue primer hose and zip ties.

Description	Part No.
Mikuni Primer Add On	53-9923
Keihin Primer Add On	53-9927



53-9915

53-9910A

Plunger Body Only	Part No.
Plunger Primer Only	53-9910A
Button Primer Only	53-9915



PRESS IN NIPPLE

Description	Part No.
1/8" Straight	53-9936
1/4" Straight	53-9937



PLASTIC "Y" FITTINGS

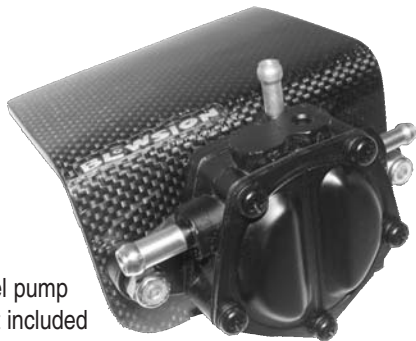
Description	Part No.
1/4" X 1/4" X 1/4" (White)	64-0046
1/4" X 1/4" X 1/4" (Black)	64-0047



MIKUNI HIGH VOLUME FUEL PUMP

16 gallons/61 Liters per hour

Description	Part No.
Fuel Pump	53-3328
Fuel Pump Repair Kit	53-3328RP



**Fuel pump is not included

CARBON REMOTE FUEL PUMP BRACKET

Use this ultra sano 100% carbon fuel pump bracket when adding remote fuel pumps. Lightweight and burly, this is the key to your mounting problems without adding weight or stress to the engine compartment.

Description	Part No.
Fuel Pump Bracket	KASRCO426



SEA DOO DUAL FUEL PUMP UPGRADE KIT

A must for high performance engines with the OEM dual carbs with a single fuel pump. Kit adds a fuel pump to the rear carb, eliminating fuel starvation in the rear carb at high RPM. Includes pulse fitting and hose.

Description	Part No.
Sea Doo Fuel Pump Kit	53-3325



#48 GOLD BAND

#53 BLACK BAND

SPIGOT MOUNT FLANGE FOR MIKUNI CARBURETOR

For easier removal and installation of carburetor for jetting and maintenance. Recommended to use with side draft manifold only.

Description	Part No.
M-VM40-200K (Gold Band)	48
I-VM44-200-1 For Sea Doo 951 (Black band)	53

Part NUMBER	8.5MM BOLT HOLE	CARB BORE SIZE	CARB SPIGOT DIAMETER	FLANGE THROAT DEPTH	TYPICAL CARB SIZE
M-VM40-200K	75	46	52	32	40-44
I-VM44-200-1	84	46	52	26	40-44



KEIHIN CARBURETOR ADAPTERS FOR MIKUNI CARBURETOR MANIFOLDS

Description	Part No.
A. This adapter allows mounting of Keihin CDKII 38, 42 carburetor to any popular O.E. or aftermarket 44mm Mikuni intake manifold.	53-3305

*The carb will stand straight up when using this adapter - the carb is just rotated a few degrees to clear the adapter mounting bolts.

Description	Part No.
B. This adapter is designed to mount to the Keihin CDKII 38, 42 carburetor at an angle specifically for the Kawasaki JS440/550 piston port engine.	53-3308

*A short air filter is required for to prevent rubbing on the inside of the hood



MIKUNI PUMP BLOCK OFF

Absolutely necessary tool to get your set-up perfect. Eliminates guesswork and wasted time. For all brands.

Description	Part No.
Pump Block Off	53-3330



2007 WORLD FINALS • LAKE HAVASU, AZ
PHOTO COURTESY OF JIN OMURA



BILLET ALUMINUM OIL INJECTION BLOCK OFF



Polaris	Part No.
SL/SLT650/750SLX/SL SLT780 (Comes w/ case plug), SLX Pro 785	50-9502
SL700/SLT700/Hurricane SL900/SLTX/1050 (Oil injection plug only)	50-9509



Sea Doo	Part No.
580/650/720 All	50-9504



Sea Doo	Part No.
800/951	50-9506



Yamaha	Part No.
650/701/760	50-9500



Yamaha	Part No.
1100/1200/ GPR	50-9501

Kawasaki	Part No.
650/750	50-9500

Kawasaki	Part No.
900/1100	50-9503



PLASTIC CAPS

The plastic caps have many uses on a PWC. Use the caps to cap the primer fittings, fuel fittings and any other item you need to cap will performing repairs or performing routine maintenance. Caps are sold in packs of 10.

Description	Part No.
Small 1/8" - Oil Primer Nipple	50-9500P
Large 3/8" - Carb/Fuel Nipple	50-9504P

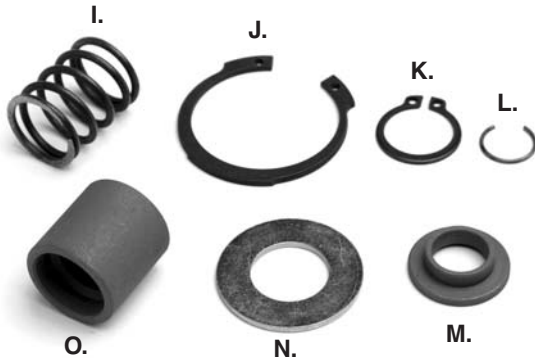
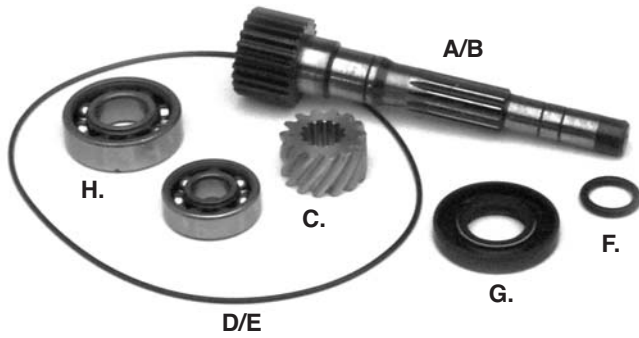


CASE BLOCK OFF

Kawasaki	Part No.
650/750	50-9505

*Case Block off not applicable for 800SX-R

ROTARY VALVE PARTS



ROTARY VALVE TIMING WHEEL

Description	Part No.
Rotary Valve Timing Wheel	012-170



ROTARY SHAFT PULLER

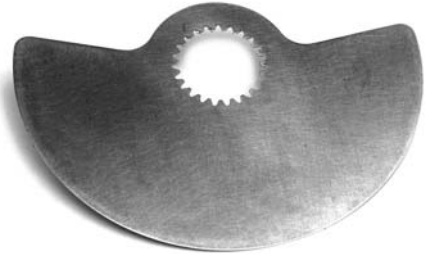
Special rotary shaft puller tool for Sea Doo PWC.
 Fits: Most 580cc, 650cc, 720cc, and 800cc Sea Doo engines.
 (6mm thru bolt included)
**Lubrication of all areas is required before using this tool*

SEA DOO ROTARY VALVE SHAFT AND PARTS

Descriptions	OEM#	Part No.
A. Rotary Valve Shaft 580/650/720	293-837-251	010-455
B. Rotary Valve Shaft 800	290-837-351	010-457
C. Rotary Valve Shaft Gear only (14 teeth) 580/650/720/800 (89-up)	420-935-735	010-450
D. Rotary Cover O-Ring 580/650/720	293-300-023	6250
E. Rotary Cover O-Ring 800	290-831-765	6628
F. Rotary Shaft O-Ring 580/650/720/800	293-300-024	6260
G. Rotary Shaft Oil Seal 580/650/720/800	290-930-580	009-779
H. Rotary Shaft Bearing 580/650/720/800	290-932-032 290-932-797	010-225 010-226

Descriptions	OEM#	Part No.
I. Rotary Shaft Spring 580/650/720/800	290-938-810	010-453
J. Rotary Shaft Snap Ring - Large 580/650/720/800	290-845-260	010-483
K. Rotary Shaft Snap Ring - Small 580/650/720/800	290-932-032	010-482
L. Rotary Shaft C-Clips 580/650/720/800	290-845-160	010-454
M. Rotary Spring Holder 580/650/720/800	420-827-430	010-484-01
N. Rotary Bearing Washer 580/650/720/800	420-227-439	010-459
O. Rotary Shaft Barrel 580/650/720/800	290-847-282	010-484

STAINLESS STEEL ROTARY VALVES



Model	Year	Opening Duration	Part No.
580 All	94-96	147°	006-147
650 All	94-95	159°	006-159
720	95-02	159°	006-159
785	95-02	159°	006-159



2007 WORLD FINALS • LAKE HAVASU, AZ
 PHOTO COURTESY OF JIN OMURA



MOTO TASSANARI V-FORCE3 THE FEATURES AND BENEFITS OF VFORCE TECHNOLOGY

The VForce3 Reed Valve System incorporates features you won't find with other system on the market. With such features as twice the reed tip surface, radius cage surface, snap-together construction, proprietary carbon fiber recipes and more. By doubling the reed tip surface the petals now only need to open half as far to have the same flow as a stock style cage. This is a significant advantage when you factor in that a reed petal opens and closes 133 times per second at 8,000 rpm. The petals are only traveling half the distance of a stock style cage, so now fatigue to the petal has been greatly reduced, increasing petal life. This design also enables the valve to drastically improve the entire powerband with a significant boost in the bottom and mid. Instant throttle response is an understatement! The petals now sit on a radius surface to create a "pre-loading" effect that improves an already snappy acceleration. Our new cage design now allows the reed petal tips to be recessed into the cage itself. This allows for a cushioning of the reed tips and also discourages the possibility of any back-flow.

SYMMETRICAL REED PETALS:

The VForce3 now uses symmetrical reed petals for both the inner and outer reed petals. No longer will you need to be concerned with having both "inner" and "outer" reed petals.

SNAP-TOGETHER CONSTRUCTION:

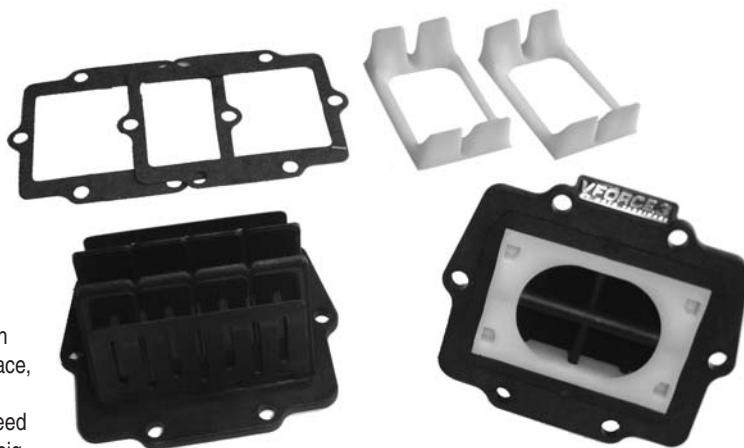
The VForce3 Reed Valve System incorporates the industry's first and only patented snap together reed valve design. The entire assembly is completely screw free, meaning that when reed petals need changing the job is now literally a "SNAP".

CUSTOM AIR-GUIDES:

Custom air guides specific to each individual application ensure the maximum airflow and performance benefits of the VForce3 reed valve system in your pwc.

PROPRIETARY CARBON LAY-UP:

Moto Tassinari continues to test and develop new "recipes" for our carbon fiber used in the VForce3 Reed Valve system. In fact Moto Tassinari specs our own exclusive recipes for all the carbon fiber we use, you can be assured



you'll never get "generic" carbon fiber designed for somebody and something else, when you buy VForce.

TWICE THE REED TIP SURFACE:

The unique and proven design of the VForce3 Reed Valve System doubles the available reed tip surface over a conventional reed valve design. By doubling the effective reed tip surface it enables the engine to get more air with less effort. The number one rule in two-stroke motor modification is More Air = More Horsepower.

AIRFOIL TECHNOLOGY:

The new reed cage design on the VForce3 Reed Valve system incorporates airfoil shaped (flat on bottom/curved on top) reed tip surfaces which in turn increases the velocity of the fuel/air mixture as it passes through and over, creating the optimum fuel atomization.



Yamaha	V-Force 3	V-Force 3 Repl. Pedal
All Triples*	V3140-794-3	3P794A
All Twins*	V3140-794-2	3P794A

**Not compatible for older WaveBlasters and GPR (Power valve cylinders) applications*

Kawasaki	V-Force 3	V-Force 3 Repl. Pedal
All Triples	V3150-794-3	3P794A
All Twins	V3150-794-2	3P794A



NEW V-FORCE DELTA 2



- Sold as complete system per engine.
- Replacement pedals and gasket: sold one set for each reed valve.

Sea Doo	Delta 2	Delta 2 Repl. Pedal	Delta 1 Repl. Pedal (97-99)	Repl. Gasket
GSX/GTX/XP 951**	V2W121-2	2P127-1	DP120-1	6755

Polaris	Delta 2	Delta 2 Repl. Pedal	Delta 1 Repl. Pedal (97-99)	Repl. Gasket
SL650,SL/SLT750				
SLX780/785 Pro	V2W131-3	2P117-1		4050
SL900/SLTX1050	V2W132-3	2P117-1		4050

Yamaha	Delta 2	Delta 2 Repl. Pedal	Delta 1 Repl. Pedal (97-99)	Repl. Gasket
All Triples	V2W140-3	2P127-1	DP120-1	4430
All Twins***	V2W140-2	2P127-1	DP120-1	2830

Kawasaki	Delta 2	Delta 2 Repl. Pedal	Delta 1 Repl. Pedal (97-99)	Repl. Gasket
All Triples	V2W150-3	2P127-1	DP120-1	MT6150
All Twins	V2W150-2	2P127-1	DP120-1	MT6150

***Must use with part #53-0939 R&D Manifold*

****Except older Blasters*

INTAKE SYSTEMS
ENGINE/GASKETS
EXHAUST
DRIVE LINE HANDLING
ELECTRICAL
WATERLINE /BLGE
STEERING & CONTROLS
BODY
ACCESSORIES
SERVICE TOOLS /HARDWARE
CHEMICAL



Carbon Tech



INTAKE
SYSTEMS

ENGINE/
GASKETS

EXHAUST

DRIVE LINE
HANDLING

ELECTRICAL

WATERLINE
/BILGE

STEERING
& CONTROLS

BODY

ACCESSORIES

SERVICE TOOLS
/HARDWARE

CHEMICAL

Sea Doo

CC	Model	Year	Performance Info	Part No.
951	All 951 models	97-06	Better mid & top end for stock, limited and superstock motors: +4hp midrange,+2 top 206HT Highly modified motors for top end only	206SS OR 206HT

Polaris

CC	Model	Year	Performance Info	Part No.
650	All 650 models	92-95	Better low to mid	317LT
700	All 700 models	96-04	Better bottom and midrange	275LT
750	All 750 models	93-95	Better mid (used by factory riders)	317LT
777	Octane	02-04	Better low to mid/stock, limited	275LT
	Virage I	02-04	Better mid to top for superstock	275MT
780	All 780 models	96-97	Better low to mid	317LT
780	SLX Pro 785	97-00	Best low to mid	317LT
			Best mid to top end: most durable	317HT
900	SL900	96-97	Increased rpm for higher top spd.	318LT
1050	All 1050 models	96-99	Increased rpm for higher top spd.	318LT
1165	All 1200 models	99-04	318LT More low end response	318LT or
			318HT Mid to top end: most durable	318HT
1192	MSX 140	03-04	More low end response	318LT
			Mid to top end: most durable	318HT

Yamaha

CC	Model	Year	Performance Info	Part No.
650	All 650 models	89-96	Smoother powerband	223LT
701	Wave blaster	93-95	225LT Stock cylinder, single carb.	225LT
with	Superjet	94-95	225HT Sock cylinder, dual carbs	225HT
61X	FXI	94-95		or
CASE	PROVXR	93-94	225M Ported motors, single carb.	225M
	Waverunner III	94-95,97	225SS Ported motors, dual carbs	225SS
	Waveraider	96-97		
701	Waveraider	94-95		
with	Waveblaster	96	202LT +3HP in midrange: for limited and stock motors	202LT
62T	Superjet	96-08		or
CASE	Wave Venture	95-98	202SSKT Special kit for superstock applications	202SSKT
	XL 700	99-04		
760	All 760 Models	96-00	202LT +3 HP in mid, +2HP top end for limited and non-ported rec boats	202LT
			202HT Best choice for 760 superstock motors or fuel injected 701 motors	202HT
800	GP800	98-00	Better midrange & top end for stock	266HT
	GP800R	01-05	Limited & superstock motors: Gives 100 RPM=1 MPH	
	XL/XLT 800	00-04	(tested by Pro-Tec)	
1100	All 1100 models	95-97	Better midrange	302LT
1131	GP1200	97-99	*+3 HP mid to top: limited racing	338LT
	XL1200	98-99	Superstock & recreational motors	338SS
	SUV1200	99-04	Top end: only choice for fuel Ing.	338HT
1176	XL1200ltd	99-00	Stock motors, single pipe motors	366HT
	XLT1200	01-05	Single pipe, limited triple pipe	366SS
	GPI1200R	00-02	Ported triple pipe motors	366R
1296	GP1300R	03-08	Stock motors, single pipe motors	366HT
			Single pipe, limited triple pipe	366SS
			Ported triple pipe motors	366R

Kawasaki

CC	Model	Year	Performance Info	Part No.
550	ALL	91-95	Smoother powerband	239LT
650	ALL	86-96	Improved low to midrange	212LT
743	ALL	92-02	Better low & mid: stock & limiteds	238LT
			Superstock & ported motors	238SS
			High RPM, stroked or fuel injected	238HT
782	800 Motor	03-08	Better low & mid: stock & limiteds	238LT
			Superstock & ported motors	238SS
			High RPM stroked or fuel injected	238HT
891	ALL 900 MOTORS	95-06	Better midrange and bottom end	338LT
			Superstock & ported motors	338SS
1071	ALL 1100 MOTORS	96-04	Better low & mid: stock & limiteds	338LT
			Superstock & ported motors	338SS
			High RPM, stroked or fuel injected	338HT
1176	Ultra 150	99-05		338LT, 338SS
	1200STXR	04-05		or 338HT

Boyesen



BOYESEN POWER REEDS

- The unique dual-petal design
- Quicker acceleration, throttle response and speed.
- Dual-flex epoxy fiber material for maximum longevity and reliability.

Yamaha	Part No.
500 All	022
650 Super Jet	023
650 Wave Runner (All)	023
700 Wave Raider (All)	024
701 FX1 (94-95)	024
701 Pro-VXR (93-94)	024
701 Super Jet (94-95)	024
Wave Blaster (93-95)	024
Wave Raider (Single Carb) (96)	024
Wave Runner III (94-97)	024
701 Super Jet (96-08)	026
Wave Blaster (96)	026
Wave Raider (94-96)	026
Wave Raider DLX (95-96)	026
Wave Runner XL (99-04)	026
Wave Venture (95-98)	026
GP760(97-00), 760 Waves All (95-99)	029
1100 All (95-97)	028
GP1200(97-99), SUV1200(99-04)	033
XL1200(98)	033

Kawasaki	Part No.
550SX (91-95)	014
650SX/X2/SC/SS/ST/TS (All)	012
750SX/SXI/SXI-Pro (All)	013
750SS/STS/XI/ZXI (All)	013
800 SX-R (03-08)	013
900ZXI (-97), STX (97-01), STS (01)	020
1100ZXI/STX (96-03)	021
Ultra 130 (01-04)	036
STX-R 1200 (02-05), Ultra 150 (99-05)	021

Polaris	Part No.
650 All (92-95)	016
SL750 (93-95), SLT750 (94-95)	016
SL780 (96-97), SLT780 (96-97)	016
SLT780 (96-97), SLX780 (96)	016
SLX785 Pro (97-01)	016
700 All (-02)	013
Octane (02-04)	013
800 DI (02-04)	013
Hurricane (96-97)	013
SL900 (96-97)	030
SL1050 (97), SLTX1050 (96-99)	031
SLX1050 (98)	031
Pro/SLX/Virage TX 1200 (00-02)	031
Genesis 1200/FFI (99-01)	031
MSX 140 (03-04)	031

Tigershark	Part No.
640 All (93-99), 770 All (96-99)	018
900 (95-96)	019
1000 All (97-98), TS1100 (99)	019



BOYESEN PRO SERIES REEDS

- Quicker acceleration for that all important holeshoot.
- Crisper mid-range allowing you to pull that extra boat length.
- Carries RPMs further past peak allowing you to run that steeper pitched impeller for increased top end.
- Easy starting and smoother idling for those dreaded no-wake zones.
- Increased life over traditional carbon fiber reeds.

Yamaha	Stock Unlimited	Hi-Performance
700 Wave Raider (All)	PRO-34	PRO-35
701 FX1 (94-95)	PRO-34	PRO-35
701 Pro-VXR (93-94)	PRO-34	PRO-35
701 Super Jet (94-95)	PRO-34	PRO-35
701 Super Jet (96-08)	PRO-36	PRO-37
Wave Blaster (93-95)	PRO-36	PRO-37
Wave Blaster (96)	PRO-36	PRO-37
Wave Raider (94-96)	PRO-36	PRO-37
Wave Raider, Single Carb (96)	PRO-34	PRO-35
Wave Raider DLX (95-96)	PRO-36	PRO-37
Wave Runner III (94-97)	PRO-34	PRO-35
Wave Runner XL (99-04)	PRO-36	PRO-37
Wave Venture (95-98)	PRO-36	PRO-37
GP760 (97-00)	PRO-38	PRO-39
760 Waves All (96-99)	PRO-38	PRO-39
1100 All (95-97)	PRO-40	PRO-41
GP1200 (97-99), GP1200R (99)	PRO-77	PRO-78
SUV1200 (99-04), XL1200 (98)	PRO-77	PRO-78

Kawasaki	Stock Unlimited	Hi-Performance
750 All	PRO-24	PRO-25
800 SX-R (03-08)	PRO-24	PRO-25
900 All (-96)	PRO-76	—
1100 All (96-03)	PRO-57	—
Ultra 150/STX-R1200 (99-05)	PRO-57	—

Polaris	Stock Unlimited	Hi-Performance
700 All (thru 04)	PRO-26	PRO-27
Octane (02-04)	PRO-26	PRO-27
750 All (93-95)	PRO-28	PRO-29
780 All (98-97)	PRO-30	PRO-31
785 SLX Pro (97-01)	PRO-30	PRO-31



INTAKE SYSTEMS
ENGINE/GASKETS
EXHAUST
DRIVE LINE HANDLING
ELECTRICAL
WATERLINE /BILGE
STEERING & CONTROLS
BODY
ACCESSORIES
SERVICE TOOLS /HARDWARE
CHEMICAL

Boyesen



BOYESEN REED VALVE STUFFER KIT

Kit includes a complete engine set of Boyesen 3D Reed Valve Stuffers and Boyesen PRO Series reeds.

Yamaha	Part No.
GP1200R (00-02), XL/XLT 1200 (99-05), GP1300R (03-08)	RSK-306
Replacement Reed *Must use with Boyesen Stuffer	PRO-128



RAD VALVES FOR YAMAHA WATERCRAFT

Fits Yamaha Engines:
701(62T) (94-08), 760(64X), 1100(63M) and 1200(65U)

Yamaha	Rad Valve	Replacement Rad Reed	Gasket
Stock Intake	RAD-131*	PRO-131	2830
Manifold in Stock applications			
Riva or R&D	RAD-131R*	PRO-131R	2830
Twin or Triple Intake Manifold			

* Order one set per cylinder, 2 valves for twin, 3 valves for triple cylinders.

BOYESEN EXTREME VELOCITY INTAKE KIT & RAD VALVES



Yamaha	Part No.
701 Superjet 96-08, Extreme Velocity Intake Kit*	IMK-001
Extreme Velocity Intake Manifold Only	IM-001
"EV" RAD Valves Kit (2 Valves per Kit)	RAD-131A
Replacement RAD Reed for RAD-131A	RL131A
Replacement Gasket for RAD-131A	2830



Kawasaki	Part No.
800SX-R 03-08, Extreme Velocity Intake Kit*	IMK-002
Extreme Velocity Intake Manifold Only	IM-002
"EV" RAD Valves Kit (Single Valve)	RAD-113
Replacement RAD Reed for RAD-113	RL131A
Replacement Gasket for RAD-113	IMG-001

*Kit includes (1) precision cast aluminum intake manifold, (2) "EV" RAD valves, (1) carb adapter plate and all necessary installation hardware.

R&D

REED VALVE STUFFERS

- Improves Airflow • Quicker Throttle Response
- Easy Installation

R&D Reed Value Stuffers significantly increase low-speed air velocity. This dramatically improves low/mid range throttle response and also top end performance. Exclusive internal wing design increases overall velocity through reed assembly.



Sea Doo	Part No.
98GS/XL/XPL/GTXL	273-95000
*Excluded 97GS/XL	
951 Used with R&D Manifold	
223-95000	



Yamaha	Part No.
GP 1200R/GP1300R	272-12000
OEM Manifold	



Yamaha	Part No.
94-95 701 Raider	272-70301
760 Raider 96 701 Venture,	
96 Blaster / Blaster2	
96+ Super Jet OEM Manifold	



Kawasaki	Part No.
750/800SX-R	271-75001
OEM Manifold	
750/800SX-R	271-75000
R&D Manifold	

RIVA RACING

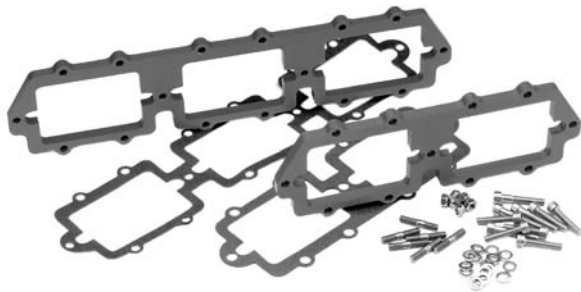


RIVA/BOYESEN REED STUFFERS

Riva precision aluminum reed stuffers were designed to increase fuel/air velocity through the intake tract, resulting in increased throttle response and acceleration. These stuffers fit

your stock reed cages and match perfectly with the original intake manifold. Will not warp or loose shape like traditional plastic stuffers. A very economical bolt-on performance modification.

Yamaha	Part No.
701 (62T) 2 pcs.	RY1402



REED VALVE SPACER BOOSTERS

Yamaha	Part No.
701/760 (62T/64X) Case	RY124M-S
701/760 Spacer Gasket	53-5235-GSK
1100/1200 (63M/65U) Case	RY128M-S
1100/1200 Spacer Gasket	53-5236-GSK



JSU ANGLED REED SPACER

Angled to direct intake airflow up into the transfer ports on cylinder. This reed spacer kit is the easiest way to bolt on a 3 HP gain. Kit comes complete with all the hardware and gasket needed for installation.

Kawasaki	Part No.
K750/800SX-R Angled Reed Spacer	JSU 800-RSK



2007 WORLD FINALS • LAKE HAVASU, AZ
PHOTO COURTESY OF JIN OMURA



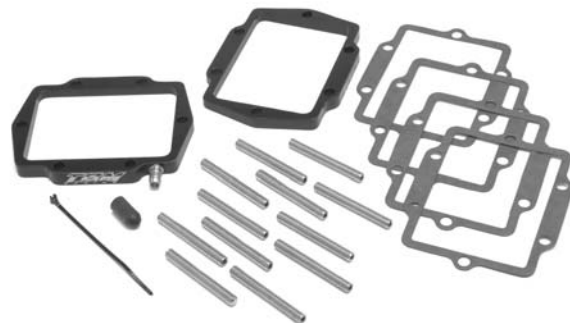
R&D REED VALVE SPACERS

Yamaha	Part No.
701/760 (62T/64X) Reed Spacer Angled	262-70101



*Hardware not included.

Kawasaki	Part No.
750/800 Spacer	251-75010
750/800 Spacer Angled	251-80000
Reed Gasket	7050
6x50mm Stainless Steel Studs (Sold Each)	62-3050



TBM ANGLED REED SPACER

TBM angled reed spacers position the reed cages in the optimal position for fuel atomization. Key features include a full 3 degrees of angle, an integrated pulse fitting, which allows you to add a second pulse line without drilling your crankcase. Compatible with stock, or aftermarket cages these spacers come complete with all necessary hardware and gaskets.

Kawasaki	Part No.
K750/800SX-R Angled Reed Spacer	TBM106

INTAKE SYSTEMS

ENGINE/GASKETS

EXHAUST

DRIVE LINE HANDLING

ELECTRICAL

WATERLINE /BILGE

STEERING & CONTROLS

BODY

ACCESSORIES

SERVICE TOOLS /HARDWARE

CHEMICAL



RACING FLAME ARRESTORS

(without Cotton Media)

Experience increased horsepower and engine protection with K&N Personal Watercraft flame arrestors for both normal and race applications. K&N "RACING ONLY" flame arrestors have an epoxied screen filter that does not have the cotton media.

K&N flame arrestors replace the restrictive factory airbox. In most cases an adapter is required (for adapters see pages 30 & 31) to mount the flame arrestor onto the carburetor. Some watercraft may require a slight adjustment to the carburetor's fuel circuits to allow for optimum performance.

4" Tall



Height	Top Color	Part No.
4"	Black Composite	59-2040RK
4"	Stainless Steel	59-2040R
Water Repellent Pre-Filter WR145-10-4DT		

2-1/2" Tall



Height	Top Color	Part No.
2-1/2"	Black Composite	59-2042RK
2-1/2"	Chrome	59-2042R
Water Repellent Pre-Filter WR145-115-25DT		

1-1/2" Tall



Height	Top Color	Part No.
1-1/2"	Chrome	59-2044R

2" Tall



Height	Top Color	Part No.
2"	Black Composite	59-2046
Water Repellent Pre-Filter WR125-2DT		



2007 WORLD FINALS • LAKE HAVASU, AZ
PHOTO COURTESY OF JIN OMURA

K&N REGULAR FLAME ARRESTORS

(with Cotton Media)

Regular K&N flame arrestors come with K&N's oiled cotton media sandwiched between screen material.

K&N flame arrestors replace the restrictive factory airbox. In most cases an adapter is required (for adapters see pages 30 & 31) to mount the flame arrestor onto the carburetor. Some watercraft may require a slight adjustment to the carburetor's fuel circuits to allow for optimum performance.



SINGLE 4-1/2" X 7" OVAL

Height	Part No.
3" Tall (45 degree)	59-2010
3" Tall (40 degree/Tapered)	59-2015
2" Mikuni Wet Suite	25-5911

DUAL 5-1/2" X 9" OVAL

Height	Center to Center	Part No.
2-1/2" Tall	3-13/16"	59-2910

HOT PRODUCTS RACING POWER FILTERS

by Tau Ceti

Tau Ceti's new Pro Series II Flame Arrestors are constructed from top quality materials such as aircraft grade aluminum, stainless steel, and a superior quality rubber base. This Flame Arrestor is designed with both duration and superior performance in mind. Using an extremely light anodized aluminum top in Silver, Black, Blue, Green and Red and a stainless steel mesh, this product is 100% corrosion resistant. With our free flowing, **stainless steel mesh**, we achieved an increase in acceleration and a much better throttle response. The universal rubber mount will fit any personal watercraft with a stock carburetor using the appropriate adapter (for adapters see pages 30 & 31). No re-jetting is necessary on stock boats.



Description	Part No.
Cone Filter 3" Silver	53-4275-SIL
Cone Filter 3" Black	53-4275-BLK
Cone Filter 3" Blue	53-4275-BLU
Cone Filter 3" Green	53-4275-GRN
Cone Filter 3" Red	53-4275-RED
Water Repellent Pre-Filter	WR125-10-35DT

Description	Part No.
Round Filter 2" Silver	53-4272-SIL
Round Filter 2" Black	53-4272-BLK
Round Filter 2" Blue	53-4272-BLU
Round Filter 2" Green	53-4272-GRN
Round Filter 2" Red	53-4272-RED
Water Repellent Pre-Filter	WR125-2DT

Description	Part No.
Round Filter 1.5" Silver	53-4270-SIL
Round Filter 1.5" Black	53-4270-BLK
Round Filter 1.5" Blue	53-4270-BLU
Round Filter 1.5" Green	53-4270-GRN
Round Filter 1.5" Red	53-4270-RED
Water Repellent Pre-Filter	WR125-15DT



MIKUNI WETSUIT FOR K&N 2" OVAL FILTERS

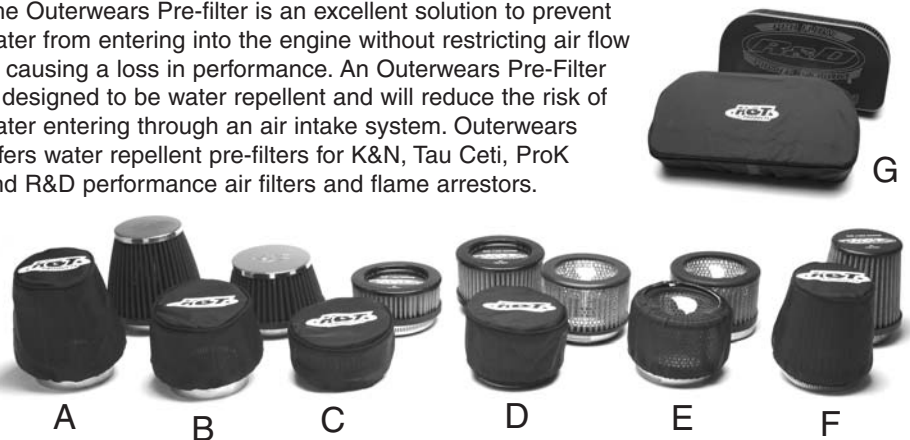


Silicone treated foam filter wrap designed to repel water without restricting the air flow to the engine. This cover is a great solution for keeping your filter dry while your riding.

Description	Part No.
Mikuni Wetsuit Color is Blue	25-5911

Outerwears Racing Accessories

The Outerwears Pre-filter is an excellent solution to prevent water from entering into the engine without restricting air flow or causing a loss in performance. An Outerwears Pre-Filter is designed to be water repellent and will reduce the risk of water entering through an air intake system. Outerwears offers water repellent pre-filters for K&N, Tau Ceti, ProK and R&D performance air filters and flame arrestors.



Description	Flame Arrestor Type	Part No.
A. 4.25" x 3" Taper/4" Tall	K&N 59-2040R/RK	WR145-10-4DT
B. 4.25" x 3.5" Taper/2.5" Tall	K&N 59-2042R/RK	WR145-115-25DT
C. 4" dia/1.75" Tall	Tau Ceti 53-4270	WR125-15DT
D. 4" dia/2.25" Tall	Tau Ceti 53-4272, ProK	WR125-2DT
E. 4" dia/2.25" Tall (Open Top)	Tau Ceti 53-4272, ProK	WR125-225
F. 4" x 3" Taper/3.5" Tall	Tau Ceti 53-4275	WR125-10-35DT
G. Pro-Lock SD951/2.5" Tall	R&D 203-95000	WR30-25DTPRO

INTAKE SYSTEMS
ENGINE/GASKETS
EXHAUST
DRIVE LINE HANDLING
ELECTRICAL
WATERLINE /BILGE
STEERING & CONTROLS
BODY
ACCESSORIES
SERVICE TOOLS /HARDWARE
CHEMICAL

APPLICATIONS FOR K&N FILTERS & ADAPTERS

Model	Stock Carb Type & Quantity	Race K&N P#	Regular K&N P#	Adapter P#
SEA DOO				
580GTX 92-94	2/38M	59-2040RK	59-2910	53-4460
580GT 89-96	1/38M	59-2042RK	59-2010	53-4460
580GTS 93-96	1/38M	59-2042RK	59-2010	53-4460
580SP 88-96	1/38M	59-2042RK	59-2010	53-4460
580SPX 92-94	2/38M	59-2042RK	59-2910	53-4460
580 SPI 88-96	1/38M	59-2042RK	59-2010	53-4460
650XP 94	2/40M"1"	59-2042RK		53-4465
650XP 90-93	2/40M"1"	59-2042RK		53-4465
650GTX 95	2/40M"1"	59-2040RK		53-4465
650SPX 95	2/40M"1"	59-2042RK		53-4465
720XP 95	2/40M"1"	59-2042RK		53-4465
720GTI 97-99	1/40M"1"	59-2040RK		53-4465
720GTI 96	2/40M"1"	59-2040RK		53-4465
720GTS 97-00	1/40M"1"	59-2042RK	59-2010	53-4465
720SP 97	1/40M"1"	59-2042RK	59-2010	53-4465
720SPX 96	2/40M"1"	59-2042RK		53-4465
720HX95-97	2/40M"1"	59-2040RK	59-2010	53-4465
720GS 97-00	1/40M"1"	59-2040RK	59-2010	53-4465
720GSI 97	1/40M"1"	59-2040RK		53-4465
800GTX 96-97	2/40M"1"	59-2040RK		53-4465
800GSX 96-97	2/40M"1"	59-2040RK		53-4465
800XP 95-97	2/40M"1"	59-2042RK		53-4465
800SPX 97-99	2/40M"1"	59-2042RK		53-4465
950GSX LTD 97-99	2/46M"1"	59-2042RK		not required
950XP LTD 98-00	2/46M"1"	59-2042RK		not required
950GTX LTD 98-99	2/46M"1"	59-2042RK		not required
YAMAHA				
W/Jammer 500 88-89	1/38M	59-2042RK	59-2000	53-4460
W/Runner 500 88-89	1/38M	59-2042RK	59-2000	53-4460
W/runner 650 90-95	1/44M	59-2042RK	59-2000	53-4480
W/Runner III 650 90-95	1/44M		59-2020	
VXR 650 91-95	1/44M		59-2020	
Super Jet 650 90-93	1/44M	59-2042RK	59-2000	53-4480
W/Raider 701 94-95	2/38M	59-2040RK		53-4462
W/Raider 70196-97	1/44M	59-2040RK		53-4482
W/Venture 701 95-98	2/38M	59-2040RK		53-4462
W/Blaster 701 96-97	2/38M	59-2042RK		53-4462
W/blaster 701 93-95	1/44M		59-2020	85-9491
Super Jet 701 94-95	1/44M	59-2042RK	59-2000	53-4480
Super Jet 701 96-08	2/38M	59-2042RK		53-4460
FX1 701 94-95	1/44M	59-2042RK	59-2000	53-4480
XL700 95-00	2/38M	59-2042RK		53-4462
GP760 97-00	2/44M	59-2040RK		53-4480
XL760 98-99	2/44M	59-2040RK		53-4482
W/Raider 760 96	2/44M	59-2040RK		53-4482
W/blaster II 760 96-97	2/44M	59-2040RK		53-4480
W/Venture 760 96-98	2/44M	59-2040RK		53-4480
GP800 98-00	2/44M NEW	59-2044R		53-4466
W/Raider 1100 95-06	3/38M	59-2040RK		53-4462
W/Venture 1100 96-98	3/38M	59-2040RK		53-4462
XL1200 98	3/44M	59-2040RK		53-4480
GP1200 97-99	3/44M	59-2040RK		53-4480
GP1200R 00	3/44M NEW	59-2044R		53-4466
KAWASAKI				
JS300 86-91	1/38M	59-2042RK	59-2000	53-4460
JS400 74-76	1/38M	59-2042RK	59-2000	53-4460
JS440 77-90	1/38M	59-2042RK	59-2000	53-4460
JS440 91-92	1/42K	59-2042RK	59-2000	53-4440
JS550 82-85	1/38M	59-2042RK	59-2000	53-4460
JS550 86-90	1/44M	59-2042RK	59-2000	53-4480

Model	Stock Carb Type & Quantity	Race K&N P#	Regular K&N P#	Adapter P#
KAWASAKI				
JS550SX 91-95	1/42K	59-2042RK	59-2000	53-4440
650X2 89-94	1/28K	59-2042RK	59-2015	
JS650SX 89-94	1/28K	59-2042RK	59-2000	
650TS 89-96	1/38K	59-2042RK		53-4440
650SC 90-95	1/38K	59-2042RK	59-2000	53-4440
750SX 92-95	1/40K	59-2042RK	59-2860	53-4440
750SXI 95	1/38K	59-2042RK		53-4450
750SXI 96-97	2/40M"1"	59-2042RK		53-4465
750SXI PRO 98-00	2/40M"1"	59-2042RK		53-4465
750SS 92-98	1/40K	59-2042RK	59-2860	53-4440
750XI 93-97	2/40K	59-2042RK		53-4440
750XIR 94	2/40K	59-2042RK		53-4440
750ST 94-95	1/40K	59-2042RK	59-2860	53-4440
750STS 95-97	2/38K	59-2042RK		53-4450
750ZXI 95-98	2/38K	59-2042RK		53-4450
800SX-R 03-08	2/40M"1"	59-2042RK		53-4465
900ZXI 95-97	3/38K	59-2040RK		53-4450
900STX 97-99	3/38K	59-2040RK		53-4450
1100ZXI 96-97	3/38K	59-2040RK		53-4450
1100STX 97-99	3/38K CDCV	59-2040RK		AD-K38-12
ULTRA150 99-00	3/40K CDCV	59-2040RK		K40-TA02
POLARIS				
SL650 92-95	3/38M	59-2042RK		53-4460
HURRICANE700 96-97	2/38K	59-2042RK		53-4440
SL/SLT700 96-97	2/38K	59-2042RK		53-4440
SLH700 98-00	2/38K	59-2042RK		53-4440
SL/SLT750 93-95	3/38M	59-2042RK		53-4460
SL/SLT780 96-97	3/38M	59-2042RK		53-4460
SLX780 95-96	3/38M	59-2042RK		53-4460
SLXPRO785 97-00	3/44M	59-2042RK		53-4480
SL900 96-97	3/38K	59-2042RK		53-4440
SL/SLTX1050 96-00	3/38K	59-2042RK		53-4440
SLXH1050 98-99	3/38K	59-2042RK		53-4440
Genesis 99-00	3/38K	59-2042RK		53-4440
1200 PRO 00	3/38K	59-2042RK		53-4440
Virage/TX 00	3/38K	59-2042RK		53-4440
TIGER SHARK				
Daytona650 92-93	1/46M	59-2042RK		53-4490
Daytona650 95	2/38M	59-2042RK		53-4460
MonteCarlo650 94-95	1/46M	59-2042RK		53-4490
MonteCarlo650 96	1/44M	59-2042RK		53-4480
MonteCarlo650 97	1/40M"1"	59-2042RK		53-4465
Montego650 94-96	1/44M	59-2042RK		53-4480
Montego650 97	1/40M"1"	59-2042RK		53-4465
Barracuda650 93-95	1/46M	59-2042RK		53-4490
Daytona770 96-97	2/40M"1"	59-2042RK		53-4465
MonteCarlo770 96-97	2/40M"1"	59-2042RK		53-4465
MonteCarlo900 95	3/44M	59-2042RK		53-4480
MonteCarlo900 96	3/40M"1"	59-2042RK		53-4465
Daytona1000 97-98	3/40M"1"	59-2042RK		53-4465
MonteCarlo1000 97-98	3/40M"1"	59-2042RK		53-4465
TS640 98-99	1/38M	59-2042RK		53-4460
TS770 98-99	1/38M	59-2042RK		53-4460
TS770R 98-99	2/38M	59-2042RK		53-4460
TS770L 98	2/38M	59-2042RK		53-4460
TS770L 99	1/38M	59-2042RK		53-4460
TS1000 98	3/40M"1"	59-2042RK		53-4465
TS1000L 98	3/40M"1"	59-2042RK		53-4465
TS1100R	3/40M"1"	59-2042RK		53-4465

ALUMINUM AIR FILTER ADAPTERS FOR KEIHIN CARBURETORS, SOLD EACH



Keihin Part No.
38/40/42mm (50mm Bore) 53-4440



Keihin Part No.
OEM Carb (44mm Bore) 53-4450
K750 SXI-95,750ZXI, K900/1100ZXI



Keihin CDCV Part No.
Ultra 150/STX-R AD-K40-14
ZXI/STX 98-02 AD-K38-12

ALUMINUM AIR FILTER ADAPTERS FOR MIKUNI CARBURETORS. SOLD EACH.



Mikuni	Part No.
38mm 38mm Bore	53-4460
44mm 46mm Bore	53-4480
46mm 48mm Bore	53-4490



Mikuni	Part No.
38mm w/oil injection only	53-4462
44mm w/oil injection only	53-4482



Mikuni	Part No.
OEM 40mm "I" Series (48mm Bore)	53-4465
Sea Doo HX/XP, K750 SXI 96-02, K800SX-R 03-08	



Mikuni	Part No.
OEM Carb Yamaha GPR Series (57mm Bore)	53-4466



OIL INJECTION SPACER PLATES

Description	Part No.
Mikuni 44mm	53-4485
Mikuni 46mm	53-4495
Press in Nipple (1/8") only	53-9936



A.



B.



C.



D.



E.

K&N FILTERS AND ADAPTER FOR GO-PED®

Description	Part No.
A. K&N 3" x 2-1/2"	62-1480
B. K&N 3-1/2" x 1-1/2"	RC-2870
C. K&N 4-1/2" x 1-1/2"	RC-0340
D. Adapter for K&N	20-1001
E. K&N 3" x 2-1/2" W/chrome shield	62-1515



REPLACEMENT THROTTLE CABLES



Sea Doo	OEM#	Part No.
720 XP 95, 800 SPX 97-99, 800 SP 95-96	277-000-468	002-039-03
580XP 91, 580GT 90-91	277-000-098	002-037
Yamaha		
500WR '87-'93, 650SJ '90-'93, 650 WR/WRIII/LX/WR VXR '90-'96	EUO-U7252-01	58-3501
701 SJ '90-'95, WR701 '96-97, W/B701 '93-95, 701WRII GP '94-'95, 701 WR Pro VXR '93-'94, 701 WRII '97		
701 WR DX 95, 701 WV 95-96	GJ1-U7252-00	002-057
1100 WR 95-96, 1100 WV 96		
Kawasaki		
440 '77-'86, 550 '82-'86	54012-3001	58-3121

INTAKE SYSTEMS
ENGINE/GASKETS
EXHAUST
DRIVE LINE HANDLING
ELECTRICAL
WATERLINE /BILGE
STEERING & CONTROLS
BODY
ACCESSORIES
SERVICE TOOLS /HARDWARE
CHEMICAL

PERFORMANCE FILTER KITS FOR TWO STROKE MOTORS



STX-R #200-02240

#20



Kawasaki	Part No.
1200STXR Stock Carb/Stock Pipe	200-01240
1200STXR With Triple Pipe	200-02240

Kawasaki	Part No.
800SX-R Stock Carb (I Series Adapters Included)	200-00800
800SX-R Aftermarket Carb	200-00120
120mm center to center (Adapter not included)	



SD 951
#203-95000



Ultra 150 #200-00140

Sea Doo	Part No.
951 All	203-95000

Yamaha	Part No.
GP1300R Stock Fuel Injection	200-13143
GP1200R/XLL/XLT1200	200-00142

Kawasaki	Part No.
Ultra 150 1200cc Stock Carbs	200-00140



GP 1300R POWER STACK AIR FILTER KIT

The R&D GP 1300R Power Stack Air Filter Kit is designed to assemble on to the front of the OEM air plenum box. The R&D Power stack adds bottom and mid range power performance while increasing engine RPM's.

Yamaha	Part No.
GP 1300R for Stock Box	200-13100



RIVA POWER FILTER FOR GP1300R

Power filter fits directly onto OEM air box assembly. Kit comes with water repellent filter.

Yamaha	Part No.
Flame Arrestor, Power Filter Kit GP1300R (60T)	RY1312

PERFORMANCE FILTER KITS FOR FOUR STROKE MOTORS



R&D POWER PLENUM HIGH PERFORMANCE FLAME ARRESTOR KIT

The new R&D F12 / F 15 Power Plenum Air Filter kit delivers a noticeable increase in throttle response and acceleration, as well as increase RPM's between 50 and 100.

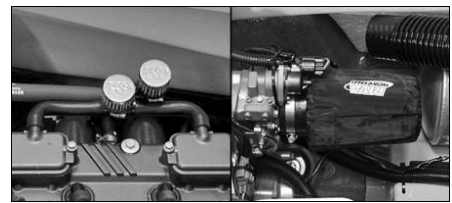
Kawasaki **Part No.**
STX-F12/F-15 **215-15010**



R&D REPLACEMENT PERFORMANCE FILTER

The new R&D Replacement Performance Filter replaces the stock restrictive perforated filter plate and allows for improved airflow. Amounts directly into the stock filter box and retains the OEM look. The improved airflow increases throttle response, RPM, and top speed.

Kawasaki **Part No.**
STX-F12/F15 **215-15000**



RIVA ULTRA LX/STX-F PERF. POWER FILTER KIT

- Increases airflow and power.
- Installs easily.
- Mounts directly onto stock throttle body.
- Built to our specifications by K&N.
- Includes two smaller K&N filters for engine breather hoses and water repellent pre-filter cover for primary filter.

Kawasaki **Part No.**
Performance Power Filter **RK13085**



R&D POWER PLENUM FLAME ARRESTER

The R&D High Flow Power Plenum replaces the restrictive stock flame arrester allowing more improved airflow, why? Because more air flow with less restriction means more power!

Yamaha **Part No.**
FX 140/Cruiser **200-00144**
FX HO/Cruiser



R&D HIGH FLOW POWER PLENUM AIR BREATHER

The R&D High flow breather is a direct replacement for the stock breather in the OEM air box. Water tested to deliver improved throttle response, acceleration and top speed with 50-100 RPM increase.

Yamaha **Part No.**
FX 140/Cruiser **200-00143**
FX HO/Cruiser



VELOCITY STACK KIT

The R&D Velocity Stack Kit is a direct bolt-on kit that replaces the restrictive OEM stacks. Designed to increase air velocity into the throttle bodies producing improved throttle response and top end speed. Easily installs with OEM hardware.

Yamaha **Part No.**
FX 140/Cruiser **206-00140**
FX HO/Cruiser



VX110 PERFORMANCE AIR FILTER KIT

The new R&D Performance Air Filter for the VX 110 is now available. The R&D High Flow Filter design replaces the restrictive stock filter inside the stock air box, allowing improved air flow. Why? Because more air flow means more power and improved performance.

Yamaha **Part No.**
VX110 for Stock Carb Air Box **200-00110**



VX110 POWER FILTER KIT

Screen-type filter element replaces restrictive stock air filter. Extended intake tube draws cooler air into engine significantly improving performance. Includes pre-filter.

Yamaha **Part No.**
VX110 Power Filter Kit **RY13030**



R&D POWER PLENUM FILTER

The new R&D Honda R-12X Power Plenum Filter delivers a noticeable increase in throttle response and acceleration, as well as increase RPM's between 50 and 100.

Honda **Part No.**
R-12X **200-51200**

INTAKE SYSTEMS
ENGINE/GASKETS
EXHAUST
DRIVE LINE HANDLING
ELECTRICAL
WATERLINE /BILGE
STEERING & CONTROLS
BODY
ACCESSORIES
SERVICE TOOLS /HARDWARE
CHEMICAL

SEADOO RXP RXP-X RXT RXT-X • INTAKE



RXT SUPERCHARGER FILTER KIT

The R&D RXT high performance "supercharger" air intake/filter kit will eliminate power robbing air intake restriction caused by a long intake tube design and promote a noticeable

bolt of low and mid range acceleration and boost top end performance 1 - 1.5 mph! The kit features are the short intake tube design and the huge (largest in the industry) filter element. The "supercharger" power plenum filter is coupled up to a rubber mounted, precision CNC formed 60/61 aluminum constructed short intake track runner tube. The new R&D "supercharger" filter kit will allow your 1500 cc SeaDoo 4Tec "supercharged" rev up an additional 100 plus RPM's. The filter kit installs very easily in 10-20 minutes, and has provisions in the filter to install the OEM crankcase ventilator.

SeaDoo	Part No.
RXT (For 185 & 215 HP Engine), GTX Supercharged	203-95003
GTX 4-TEC N.A. (155 HP Engine)	203-95002



RIVA RXP/RXP-X/RXT RXT-X/GTX-SC POWER FILTER KIT

Delivers greatly improved acceleration and a 1-2 mph (150-200 rpm) top speed increase by replacing the restrictive stock

intake system. The Power Filter feeds your supercharger with a steady diet of cool air via a 3" diameter intake duct and oversized K&N filter element. Ducting is precision formed from a race proven composite that will not conduct heat to incoming air. Installs securely via a silicone coupler and sturdy bracket. Includes pre-filter element.

NOTE: It will be necessary to upgrade your stock pump impeller to a steeper pitch when using our Power Filter Kit. SeaDoo and RIVA both strongly recommend the use of premium octane (91+) pump fuel in your Supercharged watercraft.

SeaDoo	Part No.
Power Filter Kit, SD RXP/RXT (04-07), RXP-X, RXT-X, GTX-SC,	RS13050-06
Power Filter Kit, SD (03) GTX-SC only	RS13050-03
Power Filter only, for RS 13050-03/06	RS13050-2



R&D SEADOO RXP CRANKCASE BREATHER KIT

The R&D Crankcase Breather Kit eliminates power-robbing crankcase

fumes from the engines main air intake. Cleaner mass air equals more power!

SeaDoo	Part No.
SeaDoo RXP Crankcase Breather Kit	203-00216



RIVA INTAKE MANIFOLD UPGRADE KIT

This Intake Manifold Upgrade Kit enables your engine to produce more horsepower through increased boost pressure (+1lb). Supplied

hole cutting tool allows easy removal of restrictive screen element from inside of intake manifold. Special o-ringed, billet block-off plug with integrated fitting for aftermarket boost pressure gauge fills opening left after removal of screen element. Includes detailed installation instructions.

SeaDoo	Part No.
RIVA Intake Manifold Kit	RS12080-IMUK
RXP-X 255, RXT-X 255	



SEADOO RXP POWER PLENUM FILTER KIT

A hot rod should run and sound

like a hot rod! The new R&D RXP Power Plenum Air Filter Kit will get the job done with definite noticeable increase in throttle response and acceleration, as well as increase RPM's between 50 and 100! R&D Power Plenum Filter Kits have been dyno tested and race proven to add 3 to 5 horsepower on stock four stroke 1500 cc engines! High performance four stroke guru's have dyno tested the R&D Power Plenum Air Filters to over 280 horsepower! The R&D RXP Power Plenum Filter Kit gives the RXP 215's engine a high performance racing look, sound, and performance without sacrificing an ounce of reliability!

SeaDoo	Part No.
SeaDoo RXP (215 HP Engine)	203-00215
SeaDoo RXP-X, RXT-X (255 HP Engine)	203-00255*

*Air Filter only, utilizes the OEM air intake plenum tube



2006 & Newer Models



2005 & Older Models



RXP/RXT CATCH CAN/OIL BREATHER SYSTEM

Easy to install catch can/oil breather eliminates power-robbing crankcase fumes and oil vapor from your engine's air intake. Increases horsepower by removing the engine's requirement to burn relatively non-combustible oil. Also improves intercooler efficiency by preventing the oil sludge coating that lowers thermal efficiency. Excess oil vapor is routed to our translucent catch can where it condenses and collects for occasional draining via integrated petcock valve. Kit included K&N breather and SeaDoo mounting bracket along with all necessary hardware & installation instructions.

SeaDoo	Part No.
Breather, Catch Can Kit, SD RXP215, RXT 215, RS19050-BCC RXP-X 255, RXT-X 255 & GTX 4-TEC	

RIVA RXP PRO-SERIES POWER FILTER KIT



The Pro-Series Power Filter is a race-bred air intake system that draws cool air from outside your engine compartment delivering incredible performance and eliminating power-robbing heat intake. Air enters the system under seat through a billet aluminum intake flange equipped with a water-repellent pre-filter. Precision formed ducting attaches to supercharger via a large 4" adapter. Kit includes a complete oil catch can/breather system that keeps hot oil vapor and crankcase fumes from entering your engine's air intake. Also contains two Flow-Rite® water-repellent vents for improved ventilation of engine compartment through engine cowling.

NOTE: This product is not designed for heavy surf use due to possibility of water ingestion. We recommend RIVA Power Filter part#RS13050-YEAR for this application.

SeaDoo	Part No.
Power Filter Kit, Pro-Series, SD RXP 215, RXP-X 255	RS13056
Pre-Filter Assembly only, For RS13056	RS13056-PF

SEADOO RXP RXP-X RXT RXT-X • SUPERCHARGER



Power Cooler Kit with Performance Blow-off Valve



Power Cooler Kit with Pro-Series Blow-off Valve



Block off for OE Intercooler



Power Cooler Mounting Bracket

RIVA SD POWER COOLER

The RIVA Power Cooler is a significantly improved intercooler system for the SeaDoo 215hp Intercooled Supercharged 4-TEC engine. Delivers an increase of 15-peak horsepower over original intercooler providing arm-wrenching results on the water. Realizing that boost loss was just as important as thermal performance, we designed the Power Cooler with a large, unrestricted core that exhibits minimal pressure loss. Our cooling element is dramatically more efficient than the stock unit with exit temperatures averaging 50°F cooler than stock. This delivers cooler, denser air for increased performance throughout the RPM range. Includes integrated blow-off valve that improves supercharger reliability and performance by relieving unwanted pressure during off-throttle operation. Also reduces supercharger clutch wear and eliminates heat soak in discharge tube. Kits contain all necessary mounting hardware and installation instructions. Requires use of RIVA Rear Exhaust Kit (Part RS15050-1)

Description	Part No.
Power Cooler, w/Performance Blow-off Valve SD RXP/RXT/05-06 GTX-SC Ltd.	RS1750-PC
Power Cooler, w/Pro-Series Blow-off Valve SD RXP/RXT/05-07 GTX-SC Ltd.	RS1750-PC-001

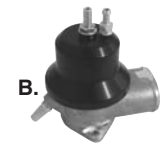


RS1750-PC-UK

RIVA UPGRADE KIT, POWER COOLER, FOR RS1750-PC

Pro-Series Valve & Tubes Upgrade Kit: Includes high-strength aluminum tubes and Pro-Series Blow-off Valve for use with Stage III and above applications.

Description	Part No.
Upgrade kit, Pro-Series Aluminum Tube Set (for RS1750-PC) Includes Performance Blow-off Valve	RS1750-PC-UK



RIVA ALUMINUM TUBE SET AND BLOW-OFF VALVE

Aluminum Tube Upgrade Kit: Includes high-strength aluminum tubes with bolt-on adapter to accommodate our Performance Blow-off Valve (part# RS1750-BV-102). Adapter can be removed enabling use of Pro-series

Blow-off Valve (part# RS1750-BV-PSV).

Description	Part No.
A. Upgrade Kit, Pro-Series Aluminum Tube Set (for RS1750-PC)	RS1750-PC-TK
B. Pro Series Blow-Off Valve Only	RS1750-BV-PSV



R&D RXP SUPERCHARGER SURGE PROTECTOR KIT

The R&D Surge Protector Kit will significantly improve supercharger clutch and compressor wheel performance and reliability by

eliminating compressor surge. Manufactured from high-temperature silicone hose with an integrated molded riser for the blow off valve to function without hindering intake flow or velocity. Kit comes completely assembled with silicone elbow, blow off valve, R&D B.O.V. filter, mounting hardware and instructions.

Description	Part No.
R&D RXP 215/RXT 215/GTX-SC SC Surge Protector Kit	613-95003
R&D RXP-X 255/RXT-X 255 SC SC Surge Protector Kit	613-95255



RIVA SD SUPERCHARGER BLOW-OFF VALVE KIT

Our Blow-off Valve Kit improves supercharger reliability and performance by relieving unwanted

pressure during off-throttle operation. Reduces supercharger clutch wear and eliminates heat soak in discharge tube. High-strength silicone hose with integrated blow-off valve installs easily in place of OEM elbow joint. Includes K&N filter to prevent debris from entering valve outlet. A simple and cost effective upgrade for both stock and modified supercharged engines. Includes all necessary mounting hardware and installation instructions.

Description	Part No.
C. Blow-off Valve Kit, SD S/C, RXP/RXT/GTX-S	RS1750-BV
D. Performance Blow-off Valve Kit Only	RS1750-BV-102



R&D RXP SUPERCHARGER SLEEVE

The sleeving up of the diameter of the Supercharger enables a 3.5" or 4" intake filter

system to be utilized. The larger intake increases cubic air volume as well as decreases air inlet restriction. A win win, supercharge your supercharger and give it more air! Available in 3.5" and 4" diameters.

Description	Part No.
RXP Supercharger Sleeve 3 1/2" Diameter	613-95035
RXP Supercharger Sleeve 4" Diameter	613-95040



RIVA SEADOO BVIC INTAKE BLOCK-OFF

Made from billet aluminum, our block-off plate fills the opening in the 215 intake manifold left when the stock intercooler is removed. Integrated fitting allows for use of aftermarket boost gauge. Includes Viton o-ring and is anodized to prevent corrosion.

Description	Part No.
RIVA SeaDoo BVIC Intake Block-off	RS1750-PC-ABBO

INTAKE SYSTEMS
ENGINE/GASKETS
EXHAUST
DRIVE LINE HANDLING
ELECTRICAL
WATERLINE /BILGE
STEERING & CONTROLS
BODY
ACCESSORIES
SERVICE TOOLS /HARDWARE
CHEMICAL

SEADOO RXP RXP-X RXT RXT-X • SUPERCHARGER



RIVA PRO-SERIES SD SUPERCHARGER HOUSING & IMPELLER

Our high performance impeller & housing combo deliver a significant increase in boost pressure and horsepower due through increased impeller blade surface area and larger interior housing volume. Produces 10.5 lbs of boost at 8,400 RPM when run with our recommended Stage III components. Impeller features a sophisticated Vortech blade design that is precision balanced to deliver smooth operation. Housing and impeller install easily onto stock supercharger base plate with no additional modifications required.

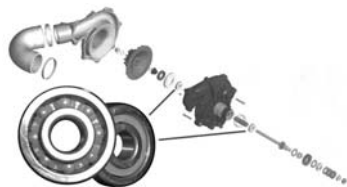
Description	Part No.
Supercharger Housing & Impeller SD RXP 215/RXT 215/05-07 GTX-SC Ltd.	RS1750-2M011



RIVA GEN-2 SUPERCHARGER IMPELLER

Presenting the ultimate (drop-in) performance supercharger impeller for the SeaDoo 215hp engine! Working closely with Vortech Engineers, we developed the next generation high-performance replacement impeller that delivers 9lbs of boost @ 8,100rpm in RIVA Stage II applications. Produces more horsepower and torque throughout the RPM range resulting in excellent acceleration & top speed. Investment cast from an extremely strong, lightweight proprietary aluminum and CNC machined to ensure exact tolerances. All new blade design is optimized aerodynamically and precision balanced to deliver smooth operation. Installs easily into stock supercharger housing with no additional modifications required. Includes replacement mounting nut and detailed installation instructions.

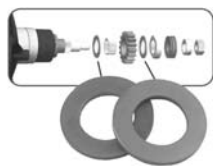
Description	Part No.
SC Impeller, all RXP 215/RXT 215/GTX-SC	RS1750-001B
Nut, Supercharger Impeller, RIVA	RS1750-001A-N



RIVA CERAMIC SEADOO SUPERCHARGER BEARINGS

Our precision-built Ceramic Supercharger Bearings provide greatly reduced heat build up and less rolling resistance. Superior surface finish of the ceramic balls reduces friction and significantly increases bearing life. These are a great upgrade when replacing your clutch washers or rebuilding your supercharger. Set includes two bearings & complete installation instructions. Made in the USA.

Description	Part No.
Riva SC Bearings All 185HP & 215HP	RS1750-CB-420



HEAVY-DUTY SEADOO SUPERCHARGER CLUTCH WASHERS

These are direct replacements for the original ceramic clutch washers that are prone to fail on modified engines. Precision machined from tool grade steel and then coated with a special Titanium process to increase durability. Will not break up and damage engine at end of service life.

Description	Part No.
Riva Clutch Washers '04-05 RXP/RXT/GTX SC	RS1751-HDW-945
Riva Clutch Washers '06-07 RXP/RXT/GTX SC	RS1751-HDW-946*

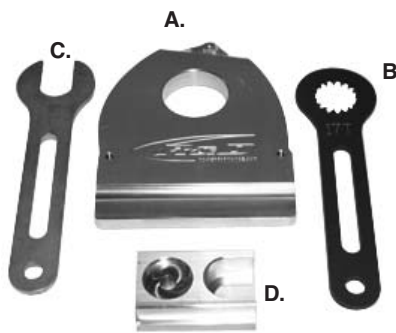
*Note: RS1751-HDW-946 must be used with 2006 style SeaDoo OEM Supercharger shaft Part #420881946



R&D SUPERCHARGER HIGH PERFORMANCE CLUTCH WASHER KIT

The R&D High Performance Supercharger Clutch Washer Kit is a direct replacement upgrade for the very fragile factory BRP O.E.M. ceramic clutch washers that are and prone to fracture and disintegrate, which can result in costly engine damages. The R&D High Performance Clutch Kit is manufactured from a high strength, wear resistant bronze alloy material that has a yield strength of 32,000 psi plus, and a Rockwell hardness of B95. The R&D Superclutch was designed to be able to wear over time without disintegrating under the SeaDoo superchargers high rpms and heat. The R&D Clutch Washer Kit is designed to not only improve reliability but also increase boost by decreasing clutch slippage.

Description	Part No.
R&D Clutch Washer Kit 06-07 RXP/RXT 215*	613-95001
<i>*NOTE: (or any supercharger rebuilt or warranted with a BRP rebuild kit part #420881946 or #420881947) NOTE: BRP#420881946 is for 215 engines, and #420881947 is for 185 engines.</i>	
R&D Clutch Washer Kit 03-04 GTX 185 S/C 04-05 RXP 215, 05 RXT 215	613-95002
<i>*NOTE: BRP supercharger rebuilt kit installed, upgraded, or warranty updated with the BRP rebuild kits #420881947 (for 185) or #420881946 (for 215), these upgraded superchargers will require R&D PART # 613-95001</i>	



R&D RXP SUPERCHARGER REBUILD TOOL KIT

R&D has designed a custom tool kit that is essential in the rebuilding process of the SeaDoo Supercharger.

All tools are specific in application and are cnc machined to ensure a precision job.

Description	Part No.
185 Horsepower Tool Kit*	613-96001
215 Horsepower Tool Kit*	613-96002
A. Supercharger Holder Tool	613-96005
D. Bearing Puller/Installer Tool	613-96006
4-Pin Socket	613-96007
Seal/Bearing Retainer Torx Wrench	613-96008
B. 215HP 16 Tooth Drive Gear Tool	613-96016
B. 185HP 17 Tooth Drive Gear Tool	613-96017
C. 185HP Clutch drive / Lock Washer Tool	613-96018
C. 215HP Clutch drive / Lock Washer Tool	613-96019

*NOTE: Kit comes with a S/C holder, bearing puller/installer tool, drive gear tool and clutch drive/lock washer tool.



RIVA SEADOO SUPERCHARGER SHAFT HOLDER TOOL

Our SeaDoo Supercharger Shaft Holder Tool makes servicing your supercharger a snap. Ergonomically designed billet handle allows a sure, firm grip without fatiguing your hand. Working ends are made from heat treated tool-grade steel to resist wear and are oversized to prevent flexing. A must for every mechanic's tool box!

Description	Part No.
RIVA SeaDoo Supercharger Shaft Holder Tool	RS1750-ISH-949

SEADOO RXP RXP-X RXT RXT-X • INTAKE • FUEL



RIVA RXP STAINLESS BRAIDED VENT HOSE KIT

Riva's custom Stainless Braided Vent Hoses directly replace the inferior plastic vent hoses that are prone to fading, cracking and distorting over time.

SeaDoo

RIVA RXP 215/RXP-X 255
Stainless Braided Vent Hose Kit

Part No.

RS5-0100



RIVA RXP HIGH FLOW HOOD KIT

Riva's lightweight High Flow Hood Kit directly replaces the OEM storage compartment lid on your RXP utilizing the original hinge & latch.

Integrated ducting delivers increased air to engine compartment improving performance and keeps water out. Easy installation requires elimination of front storage compartment bucket. Available in paint ready finish only.

SeaDoo

RIVA RXP 215/RXP-X 255 High Flow Hood Kit

Part No.

RS5-0050



SEADOO POWERSHOT ADJUSTABLE FUEL TUNER

The R&D Powershot fuel injection tuner will deliver increased horsepower, acceleration, and stronger mid-range performance by

delivering a higher performing air to fuel ratio (A.F.R.) to the engine. Many of today's high performance fuel injected four stroke muscle craft have a lean A.F.R. R&D Performance has tested, documented, and analyzed the O.E.M. fuel maps on every current fuel injected four stroke watercraft, and pre-programmed and coded the new R&D Powershot fuel injection control module to safely alter the O.E.M. fuel map to a higher performing and safer A.F.R. (richer). More horsepower, greater acceleration and stronger mid-range are the result when the proper A.F.R. is achieved and is tuned for optimum performance.

The R&D Powershot is fully adjustable on the fly (with the engine running, observed and tuned while riding), and will accommodate a wide range of adjustability to properly performance tune the A.F.R. for any combination of aftermarket parts. The R&D Powershot will add horsepower, reliability, and adjustability to any electronic fuel injected two or four stroke watercraft engine.

Description

R&D RXP 215/RXT 215 Powershot Adj. Fuel Tuner **803-95002**
R&D RXP-X 255/RXT-X 255 Powershot Adj. Fuel Tuner **803-95003**

Part No.



RIVA PRO-SERIES SEADOO FUEL INJECTORS

Our high performance fuel injectors supply modified SeaDoo engines with additional fuel. 50lb injectors are for use with RIVA Racing ECU for correct calibration.

Available in three piece kit or sold individually.

Description

RIVA Pro-Series SD Fuel Injectors (3-piece kit) 215HP RXP/RXT/05-08 GTX-SC Ltd. **RS12050-I-KIT-50**

RIVA Pro-Series SD Fuel Injectors (Individual Injector) 215HP RXP/RXT/05-08 GTX-SC Ltd. **RS12050-I-50**

Part No.



RIVA SEA DOO VALVE TRAIN UPGRADE KIT

Our Valve Train Upgrade Kit increases the reliability of your modified engine by reducing the possibility of valve float at high rpm. Includes lightweight, precision-machined titanium valve retainers, racing valve springs, base washers and OE rocker arm shaft bolts that must be replaced during installation.

Sea Doo

Upgrade Kit, Valve Train, SD RXP/RXT/GTX
Tool, Valve Compression, SD 4-TEC

Part No.

RS19050-VTU

RS19050-VCT



THERMOSTAT KIT COMPONENTS

RIVA RXP/RXT/GTX THERMOSTAT KIT

Our cool running Thermostat Kit reduces the operating temperature of your modified 4-Tec® engine by 30°F for maximum reliability and performance. Kit includes replacement thermostat, billet coolant inlet flange, stock thermostat removal tool, Oetiker® clamps, Oetiker® pliers and detailed installation instructions. NOTE: Thermostat housing (shown above) not included.

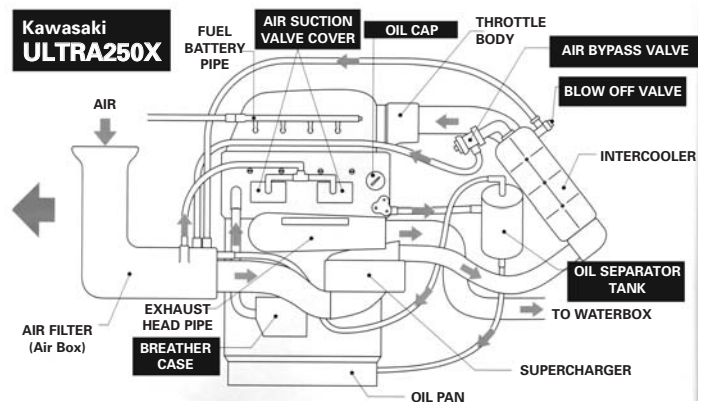
Sea Doo

Thermostat Kit, SD RXP/RXT/GTX

Part No.

RS1015

KAWASAKI ULTRA 250X ENGINE DIAGRAM



INTAKE
SYSTEMS

ENGINE/
GASKETS

EXHAUST

DRIVE LINE
HANDLING

ELECTRICAL

WATERLINE
/BILGE

STEERING
& CONTROLS

BODY

ACCESSORIES

SERVICE TOOLS
/HARDWARE

CHEMICAL

ULTRA 250X • AIR INTAKE SYSTEMS



R&D KAWASAKI ULTRA 250X HIGH PERFORMANCE AIR INTAKE SYSTEMS

The R&D high performance Air Filter Kit will improve acceleration and top speed performance by increasing air flow and reducing air temperatures that enter directly into the Ultra 250X's air plenum box area. The O.E.M. air plenum box on the Ultra 250X is a great design that will flow plenty of air. However, the air that feeds the plenum box is heated by the engine. R&D has created an easy to install "flat filter" that installs directly in place of the large center access inspection cover located directly under the main glove box. The R&D Flat Air Filter insert will allow unrestricted fresh and cool air to

enter the air plenum box area which will add power you can feel and a nice high performance tone. The R&D Performance Filter Kit also features two filters, one for each of the surge and blowoff protections valves. The O.E.M. surge valve recycles compressed hot air back into the air box plenum at idle and under deceleration conditions. The R&D surge and blowoff valve filter kit removes the air recycling hoses which will keep the hot air from entering the air plenum box reducing the engines intake air temperatures. The R&D Ultra 250X Air Filter Kit offers great performance tips on how to remove the restrictive air vent hoses which will further reduce the under seat ambient air temperatures. The R&D Filter system does not remove or alter the O.E.M. plenum box in any way, therefore there are no questions to be answered regarding water ingestion!

The R&D Filter Kit is easy to install with no modifications required to the O.E.M. parts. IJSBA legal for all classes.

Description	Part No.
R&D Ultra 250X Cool Air Intake Kit (A & B) <i>This kit consists of one of each 215-25001 & 215-24999</i>	215-25000
R&D Ultra 250X Surge and Blowoff (A) Valve Air Filter Kit Only (2 pieces)	215-25001
R&D Ultra 250X Cool Air Intake Flat Filter Only (B)	215-24999

RIVA RACING KAWASAKI ULTRA 250X HIGH PERFORMANCE AIR INTAKE SYSTEMS



① Replacement Glove Tray ② Power Filter Cover

RIVA ULTRA 250X PRO-SERIES POWER FILTER KIT

Ultra 250X Pro-Series Power Filter Kit is a race-bred air intake system that draws cool air from outside your engine compartment delivering awesome performance and eliminating power-robbing heat intake. Air enters the system under the glove box area through an oversized K&N air filter that is protected by a composite cover to prevent water intrusion. Air is fed to the supercharger via a large 4" diameter intake duct. Ducting is precision formed from a race proven composite that will not conduct heat into incoming air. Includes replacement glove box tray & water-repellent pre-filter. Not stock legal with IJSBA or APBA.

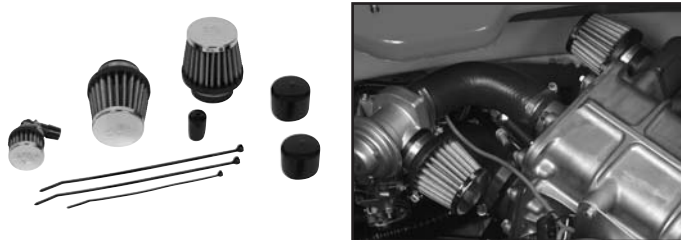
Description	Part No.
Riva Racing Ultra 250X Pro-service Power Filter Kit	RK13096



RIVA ULTRA 250X PERFORMANCE POWER FILTER KIT

ULTRA 250X Performance Power Filter Kit:
Delivers greatly improved acceleration and increased top speed by replacing the restrictive stock intake system. The Power Filter feeds your supercharger with an increased volume of air via a large 4" diameter intake duct and oversized K&N filter element. Ducting is precision formed from a race proven composite that will not conduct heat to incoming air. Includes water-repellent pre-filter. IJSBA legal for all classes.

Description	Part No.
Riva Racing Ultra 250X Performance Power Filter Kit	RK13090



RIVA ULTRA 250X BYPASS UPGRADE KIT

Easy to install Bypass Upgrade Kit contains all parts necessary to redirect hot air from the engine's bypass valves and crankcase vent; eliminating power-robbing engine emissions from entering your air intake system. Kit includes fitted K&N filters for bypass & blow-off valves and crankcase vent. Designed to work with both RIVA Pro-Series & Performance Power Filter Kits for Ultra 250X.

Description	Part No.
Riva Racing Ultra 250X Bypass Upgrade Kit	RK1750-BPUK

INTAKE
SYSTEMS

ENGINE/
GASKETS

EXHAUST

DRIVE LINE
HANDLING

ELECTRICAL

WATERLINE
/BILGE

STEERING
& CONTROLS

BODY

ACCESSORIES

SERVICE TOOLS
/HARDWARE

CHEMICAL

ULTRA 250X • FUEL INJECTION CONTROLLERS & REGULATORS



R&D ULTRA 250X ENGINE PERFORMER KIT PART #611-24349

STOCK ULTRA 250X AVG. SPEED • 65.5-66 MPH @ 7600-7700 RPM
STAGE 1 PERFORMANCE KIT • 72-72.5 MPH @ 8050-8100 RPM

The R&D Performer Engine Kit Option will add a great boost in overall power. Increased low end and mid range response and acceleration, as well as a solid 2 MPH gain in top speed performance. The R&D Performer Engine Kit will deliver more horsepower reliably with the properly matched fuel control component parts only available through R&D. The R&D Performer Engine Kit will perform excellent in all recreational riding conditions using 91 octane pump gasoline.

The R&D Performer Engine Kit consists of:

Description	Page	Part No.
R&D Tensioner Wheel	4	611-25000
R&D 1 to 1 Supercharger Wheel	5	611-25011
R&D Powershot	5	801-25000
R&D 255 Low Pressure Fuel Pump	6	811-25255
R&D Fuel Pump Installation Tool	6	811-25257



R&D ULTRA 250X POWERSHOT ADJUSTABLE FUEL TUNER

Ultra 250 Powershot Adjustable Fuel Tuner: The R&D Powershot fuel injection tuner will deliver increased horsepower, accelera-

tion, and stronger mid-range performance by delivering a higher performing Air to Fuel Ratio (A.F.R) to engine. Many of today's high performance fuel injected four stroke muscle craft have a lean A.F.R. R&D Performance has tested, documented, and analyzed the O.E.M fuel maps on every current fuel injected four stroke watercraft, and pre-programmed and coded the new R&D Powershot fuel injection control module to safely alter the O.E.M. fuel map to a higher performing and safer A.F.R. (richer). More horsepower, greater acceleration and stronger mid-range are the result when the proper A.F.R. is achieved and is tuned for optimum performance.

The R&D Powershot is fully adjustable on the fly (with the engine running, observed and tuned while riding), and will accommodate a wide range of adjustability to properly performance tune the A.F.R. for any combination of aftermarket parts. The R&D Powershot will add horsepower, reliability, and adjustability to any electronic fuel injected two or four stroke watercraft engine.

Description	Part No.
R&D Ultra 250X Powershot Adjustable Fuel Tuner	801-25000



R&D ULTRA 250X ENGINE STAGE 1 PERFORMANCE KIT PART #611-24350

STOCK ULTRA 250X AVG. SPEED • 65.5-66 mph @ 7600-7700 RPM
STAGE 1 PERFORMANCE KIT • 73 mph @ 8100-8150 RPM

The R&D Stage 1 Engine Kit will massively increase low end, mid range response and acceleration with a top speed performance of 73 mph (combined with a R&D Performer kit). The R&D Stage 1 Engine Kit will deliver more horsepower reliably with the properly matched fuel control component parts only available through R&D. The R&D Stage 1 Engine Kit will perform excellent in all recreational riding conditions using 91 octane pump gasoline.

The R&D Performer Engine Kit consists of:

Description	Page	Part No.
R&D Tensioner Wheel	6	611-25000
R&D 1 to 1 Supercharger Wheel*	5	611-25011
<i>*Recommend to use with 611-25001 Billet Hub Kit</i>		
R&D Fuel Rail Fitting	4	611-27500
R&D Bulkhead Fitting	4	611-27501
R&D Fuel Line Rail to Regulator	4	611-27513
R&D Fuel Line Regulator to Tank	4	611-27514
R&D Fuel Pressure Gauge Adapter	4	611-27517
R&D Powershot	3	801-25000
R&D Fuel Pressure Regulator	4	801-25010
R&D Fuel Pressure Regulator	4	801-25011
Mounting Bracket		
R&D 625cc High Flow Fuel Injector Kit	5	811-25000**

**Use with the stock OEM fuel pump
**The R&D 625cc High Flow Fuel Pump #811-25000 is not sold separately - it is only available in Performance Kit #611-24350*

INTAKE SYSTEMS
ENGINE/GASKETS
EXHAUST
DRIVE LINE HANDLING
ELECTRICAL
WATERLINE /BILGE
STEERING & CONTROLS
BODY
ACCESSORIES
SERVICE TOOLS /HARDWARE
CHEMICAL

ULTRA 250X • FUEL INJECTION CONTROLLERS & REGULATORS



R&D UNIVERSAL FUEL PRESSURE REGULATOR

Universal bypass fuel pressure regulator for carbureted or EFI fuel systems applications. Base fuel pressure is adjustable from 20 to 60 PSI with high pressure spring (installed). Ideal for carbureted and EFI bypass applications

where more flow and superior pressure control are desired. R&D offers two types of fuel pressure regulator set ups. Part #801-25010 will come completely assembled with #4 fittings ready for R&D custom hoses with #4 AN fittings for a nice high performance hot rod look. Part #801-25009 will have brass 3/8" to 1/4" barb 90 degree fittings installed for use with push on type hose and Otekier style clamps for security. R&D offers a high performance Coast Guard approved fuel hose that can be purchased by the foot (Part #611-27502), as well as the Otekier style clamps (Part #611-27518).

The universal type bypass style regulator is capable of handling any fuel pump up to 250 GPH. Replace "Deadhead" regulator performance and experience full flow volume and steady fuel pressure.

R&D offers a mounting bracket (Part #801-25011) that specifically mounts the fuel pressure regulator on top of the inner cooler. This location allows the R&D custom fuel lines to route perfectly.

Description	Part No.
A. R&D Fuel Pressure Regulator Barb Style	801-25009
B. R&D Fuel Pressure Regulator AN Style (pictured above)	801-25010
C. R&D Ultra 250X Mounting Bracket for Fuel Pressure Regulator	801-25011



R&D ULTRA 250X FUEL LINE KITS

R&D fuel lines are produced using high performance billet anodized AN fittings coupled to Type A SAE J 1527 US Coast Guard Approved fuel line. All Ultra 250 fuel lines are cut to specific length and pre-assembled to

ensure a perfect seal, custom fit, and that awesome hot rod look.

Description	Part No.
Rail to Regulator	611-27513
Regulator to Tank with Standard Tank Bulkhead Fitting Kit	611-27514
Regulator to tank with Standard Tank Vent Fitting	611-27515
Regulator to Fuel Gauge	611-27516
Type A SAE J 1527 US Coast Guard Approved 1/4" Fuel Line - Sold per foot.	611-27502
1/2" Otekier Style Clamps	611-27518

R&D ULTRA 250X FUEL GAUGE ADAPTER FOR TESTING AND TUNING

R&D Fuel Gauge Adapter allows you to mount the fuel pressure gauge directly to the fuel pressure regulator.

Description	Part No.
R&D Ultra 250X Fuel Gauge Adapter	611-27517

***Sold by the set only**



BARB STYLE



611-27499

AN STYLE



611-27500

R&D ULTRA 250X FUEL RAIL RETURN LINE ADAPTER FITTING

R&D offers a unique Fuel Rail Return Line Adapter fitting which will allow quick and easy connections of high performance fuel pressure regulators or fuel pressure gauges. The R&D Fuel Rail Fitting has the O.E.M. tapered metric thread pitch for easy bolt on assembly (no tapping required) installation. The R&D Fitting is available in two types, part number 611-27499 for barb type push on hose connections, and part number 611-27500 for #4 AN type connections. R&D has complete line up of fuel pressure regulators, fuel gauge and fuel hose accessories, all that meet I.J.S.B.A. and APBA.

Description	Part No.
Barb Style (Fuel rail fitting)	611-27499
AN Style (Fuel rail fitting)	611-27500



R&D UNIVERSAL #4 AN FUEL RETURN LINE FITTING ADAPTER KIT

The R&D Universal Fuel Return Line Adapter Fitting can be installed into the top of any fuel tap assembly by finding a clear area on top of the fuel tap system large enough to install the fitting. Drill a 15/32 or #56 (.468) drill size hole and install the fitting using the kit supplied aluminum seal washer on each side of the fitting. The R&D universal fuel return fitting kit is the safest and cleanest way to properly install a fuel return to the top of any make or model fuel tap assembly. Kit comes with one #4 AN bulkhead fitting, one #4 AN bulkhead nut, and two #4 AN 7/16" Aluminum washers.

Description	Part No.
R&D Bulkhead Fuel Return Line Fitting	611-27501

R&D ULTRA 250X DEEP FUEL PICKUP

The R&D Deep Fuel Pickup is designed to maximize fuel volume. The stock fuel pickup is located horizontally in the gas tank three inches above the bottom of the tank. This leaves approximately 5 gallons of unusable fuel in the bottom of the tank. The R&D Deep Fuel Pickup

relocates the stock fuel pickup to the bottom of the tank in a vertical position. The new positioning allows for 24 percent more riding time per tank of gas. The deep fuel pickup is an absolute must for offshore racing.

Description	Part No.
R&D Ultra 250X/LX Deep Fuel Pick Up	801-25100



INTAKE SYSTEMS

ENGINE/GASKETS

EXHAUST

DRIVE LINE HANDLING

ELECTRICAL

WATERLINE/BILGE

STEERING & CONTROLS

BODY

ACCESSORIES

SERVICE TOOLS/HARDWARE

CHEMICAL

ULTRA 250X • SUPERCHARGER COMPONENTS & TOOLS



R&D ULTRA 250X CRANKCASE VENTILATION/OIL & VAPOR SEPARATOR KIT

The R&D Ultra 250X Crankcase ventilation system was developed to offer a complete bolt on breather expansion kit which will substantially reduce crankcase pressures on Kawasaki Ultra 250X's supercharged engines. High performance engines (especially supercharged) need as much crankcase ventilation as possible. The R&D system doubles the volume of the O.E.M. crankcase breather and triple baffles the oil and vapor pressures within the O.E.M. breather case. The R&D system relieves excess crankcase pressures in the oil breather case and vents high pressures and fuel vapors into a piggy-back vapor/oil catch can reservoir. The R&D vapor/oil reservoir mounts and connects directly to the O.E.M. oil separator system puts an end to oil blow by messes in the engine compartment by relieving excess crankcase pressures and trapping excess fuel vapors, condensation and blow by oil into the R&D oil/vapor separator.

Description	Part No.
R&D Ultra 250X Crankcase Ventilation/Oil and Vapor Separator Kit	215-25002

ULTRA 250X • FUEL PUMP



R&D UNIVERSAL HIGH PERFORMANCE HIGH VOLUME FUEL PUMP KITS FOR ULTRA 250X

R&D Performance carries a complete line up of high performance replacement fuel pumps offered in a variety of flow rating to facilitate from basic low cost replacement to an all out 500H.P. race machine. All R&D fuel pumps have been precision flow rate tested and charted in (LPH) liters per hour. R&D fuel pumps arrive complete with terminal connectors for both the new high performance pumps quick connect installation, as well as extra terminal connector parts for the O.E.M. pump for use when converting back to stock. The R&D quick connect terminals help make fuel pump testing easy when switching from a low pressure to a high pressure fuel pump.

Description	Part No.
R&D 190 LPH (Liter Per Hour) Low Pressure Fuel Pump Kit (O.E.M. Replacement)	811-25190
R&D 255 LPH (Liter Per Hour) Low Pressure Fuel Pump Kit (Performer Kit)	811-25255
R&D 255 LPH (Liter Per Hour) High Pressure Fuel Pump Kit (400hp aftermarket supercharger)	811-25256
R&D Fuel Pump Swedge Tool*	811-25257

*NOTE: R&D High Performance fuel pumps are .040 larger than O.E.M. Mitsubishi fuel pumps on Yamaha's and Kawasaki's, therefore it may be necessary to use the R&D Fuel Pump Swedge tool to enlarge the fuel pump housing for easy installation.



R&D ULTRA 250X SUPERCHARGER PULLEYS

The new R&D Racing Supercharger Pulley Wheel will deliver a noticeable and impressive boost in torque and overall horsepower. Designed and manufactured from high quality billet aluminum and precision hard anodized for superior belt wear resistance. The R&D Pulley is 3/4 lb lighter than the O.E.M. steel pulley, and delivers 2.5 to 3.5 lbs of additional boost pressure along with 30 plus well fed ponies. The holeshot acceleration is a solid 1.5-2 boat lengths over stock with a top speed gain of 1 to 2 mph over stock. Impressive results! The R&D Pulley comes completely assembled with a new high performance bearing, all necessary hardware and installation instructions.

R&D strongly recommends the use of the R&D Powershot Fuel Tuner and R&D High Output Fuel Injectors to increase fuel flow delivery when using the R&D Supercharger Wheel. Not using the recommended R&D Powershot and R&D High Output Fuel Injector Kit and High Volume Fuel Pump Kit with the R&D Supercharger wheel, can result in engine damage due to a lean air fuel ratio.

Description	Part No.
R&D Supercharger Pulley Wheel 1 to 1 (entry level)	611-25011
R&D Supercharger Pulley Wheel 1.05 to 1	611-25105
R&D Supercharger Pulley Wheel 1.1 to 1	611-25110
OEM Replacement Supercharger Pulley	611-25010

ULTRA 250X • SUPERCHARGER



R&D ULTRA 250X BILLET BLOW OFF VALVE KIT

The R&D Billet Blow Off Valve Kit replaces the OEM plastic valve that is prone to leaking and is unreliable. The R&D Billet Blow Off Valve allows for precise pressure adjustments and has an operating range from 5lbs to 21lbs of boost.

Description	Part No.
R&D Billet Blow Off Valve Kit	611-25210

INTAKE SYSTEMS

ENGINE/GASKETS

EXHAUST

DRIVE LINE HANDLING

ELECTRICAL

WATERLINE /BILGE

STEERING & CONTROLS

BODY

ACCESSORIES

SERVICE TOOLS /HARDWARE

CHEMICAL

ULTRA 250X • SUPERCHARGER COMPONENTS & TOOLS



R&D ULTRA 250X SUPERCHARGER BELT TENSIONER WHEEL

R&D has significantly improved the Kawasaki Ultra 250X's serpentine belt tensioning wheel system by redesigning

and precision machining a new tensioner wheel with a larger O.D. The new R&D Tensioner Wheel offers a wider adjustment range and helps to reduce belt slippage via more surface area for belt contact. Wheel comes complete with precision bearing installed.

Description	Part No.
R&D Ultra 250X Supercharger Belt Tensioner Wheel	611-25000



R&D ULTRA 250X SUPERCHARGER WHEEL PULLER TOOL

The R&D wheel puller tool makes it fast and easy to remove a supercharger wheel without the removal of the intercooler system or the water muffler assembly. The R&D Supercharger drive wheel puller will save at least an hour on a pulley removal and replacement. A must have tool.

Description	Part No.
R&D Ultra 250X Supercharger Wheel Puller Tool	611-26004



R&D ULTRA 250X DRIVER WHEEL HOLDER TOOL

The R&D Holding Tool makes it fast and easy to remove and re-install a supercharger wheel without damaging or breaking the wheel hub. Use the holding tool to properly torque the drive bolts and main spline drive bolt. A must have tool.

Description	Part No.
Ultra 250X Driver Wheel Holder Tool	611-26003



R&D ULTRA 250X WASTE GATE BLOCK-OFF KIT

The new R&D Waste Gate Block-Off kit is designed to block-off the inconsistent OEM waste gate. The CNC machined part allows the supercharger to deliver its boost without premature pressure loss from a leaking waste gate. Kit comes complete with gaskets and hardware.

Description	Part No.
R&D Ultra 250X Waste Gate Block-Off Kit	611-26001



R&D ULTRA 250X BOOSTGAUGE ADAPTER

The R&D Boost Adapter installs between the supercharger and the waste gate and allows the ability to mount a boost gauge to it via 1/8" fitting. This will enable an accurate measurement of boost the supercharger is delivering. Kit comes with gaskets and hardware.

Description	Part No.
R&D Ultra 250X Boost Gauge Adapter	611-26002



R&D ULTRA 250X SUPERCHARGER WHEEL BILLET HUB KIT

The R&D Supercharger Hub Kit will replace the O.E.M.'s vulnerable part with a redesigned and beefed up precision CNC Machined 6061 billet aluminum part that is much stronger than stock. The new R&D design also offers pulley wheel alignment adjustments with a CNC machined Shim Kit that allows for precision serpentine belt cog alignment. The R&D kit comes complete with a special tool that will indicate the perfect alignment of the crank drive and compressor pulleys. At 8,000 RPM, horsepower and belt life can be greatly sacrificed through misaligned pulleys! The R&D kit offers superior strength, precision pulley alignment, and extended serpentine belt life. The all adds up to a powerful gain.

Description	Part No.
A & B. R&D Ultra 250X Supercharger Wheel Hub Kit	611-25001
B. Pulley Alignment Tool Only	611-26000



R&D ULTRA 250X BELT HOLDER KIT

The R&D Ultra 250X Belt Holder Kit was developed to make repairs and performance upgrades easier and faster.

Description	Part No.
Ultra 250X Belt Holder Kit	611-25200



R&D TEMP. SENSOR INTERFACER

R&D Performance offers a unique supercharger air temp sensor interfacer which may be necessary on some Ultra 250X units. There have been some Ultra 250X models that will default into "limp home mode" if the charger temperature sensor is peaked prematurely. Any Ultra 250 which as this default occur on long rides on hot (115 degree) days should install the R&D Supercharger Temp Interfacer Kit. The Interfacer is an inexpensive fix for this randomly occurring problem on random boats.

Description	Part No.
R&D Temp. Sensor Interfacer	801-25008



R&D ULTRA 250X INTERCOOLER TEMPERATURE CONTROL UPGRADE KIT

The R&D Ultra 250X Intercooler Temperature Control system was developed to offer an inexpensive complete bolt on kit that will allow the full performance and cooling potential the O.E.M. intercooler has to offer for recreational applications.

Description	Part No.
250X Intercooler Temperature Control Upgrade Kit	660-82500