

# SUPERJET 96+ FREESTYLE



2005 WORLD FINALS  
LAKE HAVASU, AZ

PHOTOS COURTESY OF  
JIN OMURA



## RIVA YAMAHA RACING CARBURETOR WITH POWER BOMB FUEL ATOMIZER

Description	Part No.
48mm Flange Mount	RY1200R-48-IF



### Boyesen/Full Spectrum Extream Velocity Manifold System

Reed cage kit is not included.



Yamaha	Part No.
701(62T)W/Rdr/760	IM001
Rad Reed Valve	RAD-131R
(See page 25 for details)	



Center to center 120 mm

Yamaha	Part No.
701(62T) W/Rdr/760 With Billet Carb. Plate for OEM Reed	222-76000
701(62T) W/Rdr/760 With Billet Carb. Plate for Moto Tassinari Reed	226-76100
Mounting Plate Gasket	12-0010

RIVA



Yamaha	Part No.
701/760 (62T/64X)	RY126M



### JETWORKS LINKAGE

Description	Part No.
120 mm center to center	LK-2



### MIKUNI PUMP BLOCK OFF

Description	Part No.
Pump Block Off	53-3330



### MIKUNI HIGH VOLUME FUEL PUMP

16 gallons/61 Liters per hour

Description	Part No.
Fuel Pump	53-3328
Fuel Pump	53-3328RP
Repair Kit	



### NEW V-FORCE DELTA 2

Yamaha	Delta 2	Repl. Pedal.
All Twin	V2W140-2	2P127-1



### BLOWSION FUEL FILLER FOR YAMAHA SUPERJET AND POLARIS OCTANE

Description	Part No.
Billet Dual Pick Up	YAAMAL 140
Billet Single Pick Up	YAAMAL 141

### 24-7 BILLET INTERNAL FUEL FILLER FOR YAMAHA SUPERJET

Description	Part No.
Dual Fuel Filler	DF-001
Single Fuel Filler	SF-001

Description	Part No.
Round Filter 2" Silver	53-4272-SIL
Round Filter 2" Black	53-4272-BLK
Round Filter 2" Blue	53-4272-BLU
Round Filter 2" Green	53-4272-GRN
Round Filter 2" Red	53-4272-RED
Water Repellent Pre-Filter	WR125-2DT

FUEL SYSTEMS  
ENGINE/GASKETS  
EXHAUST  
DRIVE LINE HANDLING  
ELECTRICAL  
WATERLINE/BILGE  
STEERING & CONTROLS  
BODY  
ACCESSORIES  
SERVICE TOOLS/HARDWARE  
CHEMICAL  
FREESTYLE & 800SXR  
FOUR STROKE

# SUPERJET 96+ FREESTYLE

FUEL SYSTEMS  
ENGINE/GASKETS  
EXHAUST  
DRIVE LINE HANDLING  
ELECTRICAL  
WATERLINE /BILGE  
STEERING & CONTROLS  
BODY  
ACCESSORIES  
SERVICE TOOLS /HARDWARE  
CHEMICAL  
FREESTYLE & 800SX  
FOUR STROKE



Yamaha  
701/760



## ADA YAMAHA 701/760 BILLET HEAD

Yamaha	Part No.
Y701/760 Girdle Billet Head Shell**	YA701M
** Girdle Kit is not included in Head Kit	
Girdle Kit (6 pcs.) for Girdle Head **	YA701G6
Y701/760 Non-Girdle Billet Head Shell	YA701L
701-81mm 33cc (200Lbs/105 Octane)	YA2133L
701-81mm 35cc (185Lbs/92 Octane) *	YA2135L
* 35cc Dome for 100 Octane with Dry Pipe	
701-81mm 37cc (170Lbs/92 Octane)	YA2137L
760-84mm 33cc (215Lbs/110 Octane)	YA7633L
760-84mm 31cc (230Lbs/115 Octane)	YA7631L
760-84mm 35cc (200Lbs/105 Octane)	YA7635L
760-84mm 38cc (180Lbs/98 Octane)	YA7638L
760-84mm 40cc (165Lbs/91 Octane)	YA7640L
Flat Top Dome -	
4° w/.015" Relief@86mm	30cc YAK8630L15
Flat Top Dome -	
4° w/.015" Relief@86mm	28cc YAK8628L15
Flat Top Dome -	
4° w/.015" Relief@86mm	26cc YAK8626L15
Flat Top Dome -	
4° w/.015" Relief@86mm	24cc YAK8624L15
Flat Top Dome -	
4° w/.015" Relief@86mm	22cc YAK8622L15
Dome for Flat Top Kawasaki Piston @ 82mm	24cc KD1224
Exhaust Pipe Mount Bracket	YEXBRKT-2M
O-Ring Kit	ORKIT-YA701M

\*\*\*All ADA Domes are sold individually



## ENGINE KEEPERS JOE KENNEY DESIGN

Description	Part No.
Engine Keepers Super Jet 96+	YASJAC146

## KAWASAKI PISTON FOR SJ FLAT TOP

JS-750SX, SS, ST, XiR	1992-95
Supersport Xi	1993-95

### SJ Flat Top Piston

85.0mm for SJ 771CC  
85.5mm for SJ 780CC  
Piston Skirt must be modified to match sleeve

WISECO							Wrist Pin	Wrist Pin Bearing	Big End Bearings
Piston Kit	Bore Size mm	Over Size	CC	Ring Set	Circlip	Wrist Pin	Wrist Pin Bearing	Big End Bearings	
813M08500	85.00	5.00	840	3347KD	CW20	S650	50-3302	01317	
813M08550	85.50	5.50	849	3367D		(20mm)			

## R&D SUPERJET DOMINATOR BASE GASKET

R&D Superjet Dominator Base Gasket	Part No.
.020"	070-00020
.040"	070-00040
.060"	070-00060

## CONNECTING RODS FOR SUPERJET

Brand	Part No.
Pro-X	50-3490
IMS Pro Series	427304
Hot Rod	HR 8169

## 701 SUPERJET 96-99, WAVE BLASTER 96

\* Denotes when the gasket is included in the Top End Gasket Set.

	OEM No.	Part No.
Top Kit		2550
Complete Kit		2555
Head 82mm	62T-11181	2215*
Base	6M611351	2220*
Reed (2 required)	62T-13566	2830*
Carb Manifold	62T13556	2820*
Carb Base (2 required)	-	5460
Exhaust Green	61X-14613	2330*
Oil Pump	6R8-13116	2340
Arrestor (2 required)	62T-13674	2825
Flywheel Cover	6M6-81365	2360
Head Pipe	6R7-17455	2370
Outer Cover	6R741114	2380
Damper	6R7-14749	2390
Exhaust Pipe	6M6-14739	2400



## HOT RODS NEW COMPLETE CRANKSHAFT ASSEMBLIES

Description	Part No.
650/701/760 All	HR4003



## CRANKSHAFT OIL SEAL KIT

Description	Part No.
650/701/760/1100/1200	51-0054



## CRANKSHAFT WEBS

Description	Part No.
650/701/760/1100/1200	HR201

# SUPERJET 96+ FREESTYLE



## FACTORY PIPE GENUINE REPLACEMENT PARTS

Type	Coupler	Clamp
701 SuperJet	COMHOS0100 (4")	COMCLP0050
Limited 96-UP	COMHOS0135	----
701 Super Jet Mod	COMHOS0100 (4")	COMCLP0050



## PROGRAMMABLE PULSE WIDTH MODULATED WATER INJECTION

Description	Part No.
Programmable Pulse Width Modulated Water Injection Complete Kit	42590
Hand Held Programmer / Monitor	7550



## FUEL TANK BRACKET FOR SJ96+

Yamaha	Part No.
Yamaha Fuel Tank Bracket	115849

**Skat-Trak**  
Performance Products USA

## 144 SWIRL

PITCH	PART NUMBER
12/17	SY44SW1217
13/17	SY44SW1317
13/18	SY44SW1318
14/19	SY44SW1419
15/19	SY44SW1519
15/20	SY44SW1520
16/21	SY44SW1621



## DUAL EXHAUST KIT

Description	Part No.
Yamaha SuperJet 96+	YASJAC145



## MICRO TOUCH SINGLE OUTPUT WATER CONTROLLER FOR 2-CYLINDER WATERCRAFT

Description	Part No.
Regular Single Output Water Controller	MT-16x2-27



## WATER SOLENOIDS

Water fittings not included.

Description	Part No.
Poded Sealed Solenoids (Waterproof)	PSOL-10

**SOLAS**  
Where speed begins

## YB CONCORD

PITCH	PART NUMBER
13/17	YB-CD-1317
14/18	YB-CD-1418

## YB SUPER CAMBER

PITCH	PART NUMBER
14.5/18	YB-SC-I
14.7/18.5	YB-SC-J
15/19	YB-SC-K



## YAMAHA EXHAUST SPLITTER AND SIDE EXHAUST OUTLET

Description	Part No.
A. Yamaha Exhaust Splitter only	AWACC149
B. Yamaha Side Exhaust outlet	AWACC150



## SOLENOID

Description	Part No.
Solenoid	4340



## BILLET EXHAUST NOZZLE FOR YAMAHA SJ96+

Yamaha	Part No.
Clear	YAAMAL350CL
Blue	YAAMAL350BL
Red	YAAMAL350RD
Black	YAAMAL350BK



## IMPROS CUSTOM SOLAS SET BACK IMPELLERS

Race Class	Description	Part No.
Stock/Ltd.	13/15 Solas Concord-3mm	YBCD1315SB
Modified	13/16 Solas Concord-3mm	YBCD1316SB

FUEL SYSTEMS  
ENGINE/GASKETS  
EXHAUST  
DRIVE LINE HANDLING  
ELECTRICAL  
WATERLINE /BILGE  
STEERING & CONTROLS  
BODY  
ACCESSORIES  
SERVICE TOOLS /HARDWARE  
CHEMICAL  
FREESTYLE & 800SXR  
FOUR STROKE



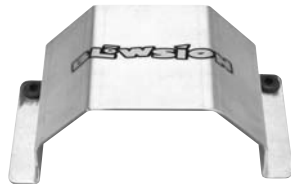
# SUPERJET 96+ FREESTYLE

FUEL SYSTEMS  
ENGINE/GASKETS  
EXHAUST  
DRIVE LINE HANDLING  
ELECTRICAL  
WATERLINE /BILGE  
STEERING & CONTROLS  
BODY  
ACCESSORIES  
SERVICE TOOLS /HARDWARE  
CHEMICAL  
FREESTYLE & 800SX  
FOUR STROKE



## BILLET DRIVE COUPLER SET

**Yamaha** Part No.  
All Yamaha 54-1129  
(except 63M/66E/66V)  
"Kawasaki Dampener Type"  
R&D Yamaha 612-70300  
Coupler "Kawasaki Dampener Type"



## YAMAHA SJ DRIVE COUPLER COVER

**Description** Part No.  
SJ Drive Coupler Cover YAAMAL332



## TBM RACING YAMAHA SUPER PUMP CONE

**Yamaha** Part No.  
Super Pump Cone TBM120-YAM



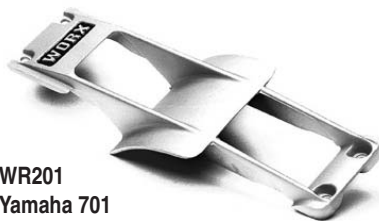
## WET WOLF FREESTYLE CONE

**Yamaha** Part No.  
Super Jet FSYAM



## AQUAVEIN INTAKE GRATES PRO SERIES RIDE PLATES

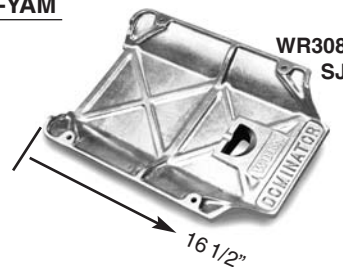
**Yamaha** Part No.  
Super Jet Aquavein 112-70102  
Super Jet 96+ Ride Plate 122-70101  
Super Jet 96+ Ruis Ride Plate 122-70102



WR201  
Yamaha 701

## WORX RACING MAXILOADER

**Yamaha** Part No.  
701 Super Jet, W/Blaster I/II WR201  
701 Super Jet Pro Series WR205



## WORX DOMINATOR "D" CUT-OUT RIDE PLATES

**Yamaha** Length Part No.  
Super Jet Dominator, Long 18 1/2" WR305  
Super Jet Free Style, Short 16 1/2" WR308



112-70104 JD #36  
**R&D PRO2 PUMP SHOE FOR SJ**

**Yamaha** Part No.  
Super Jet 96+, R&D Pro 2 112-70104  
Pump Shoe  
Jet Dynamics Superjet 96+,  
OEM Replacement Aluminum  
Pump Ring JD #36



## TUBBIE SPONSONS

**Description** Part No.  
A. Tubbie 1 AWC0212  
-Rec-Surf-Freeride-Freestyle  
B. Tubbie 2-Race Model Only AWC0213



## YAMAHA 650/701 ENHANCER

**Description** Part No.  
Yamaha 650/701 4253



## MULTI-CHANNEL RACING IGNITION SYSTEMS

Kit Part No.	Description	Ignition	Trigger Unit	Trigger(s) Plates	Coil (w/Bracket)	Wire Set	Flywheel/Magnet Wheels
42380	Yam 650/701/760 Total Loss	42351	4311	(2) 4316	(2) 42921	31009	43032



S1095MHT  
S1095M

3270M  
(19 tooth)



## NEW MES AQUA TORQUE STARTERS AND STARTER DRIVES

Yamaha	OEM#	High Torque Starte	OEM Replacement Starter	Drive Gear Idle Gear
650/701/760 (All)	6M6-81800-10-00	S1095MHT	S1095M	3270M

# SUPERJET 96+ FREESTYLE



J315 Inside J315 Outside

## JETINETICS CHARGING FLYWHEEL

Description	Part No.
Yamaha 701 (62T/64X)	J315



## WATERPROOF SWITCHES AND BRACKETS

Yamaha	Part No.
All	57-3017



## 3-WAY PANEL MOUNT ROTARY SWITCHES

Description	Part No.
Panel Mount Switch	57-3020



## ONE WAY VALVE

Description	Part No.
Superjet, Kawasaki 750, OCTANE	AWCO161
Pro Finish Kit	AWCO163



## RULE BILGE PUMP

Description	Hose	Height	Part No.
500 GPH	3/4"	3-1/2" (89mm)	25D
800 GPH	3/4"	3-3/4" (96mm)	20R



## DUAL BILGE PUMP MOUNTING BRACKET

Description	Part No.
Superjet 96+	YA96AL441



## BILGE PUMP BRACKET

Yamaha	Part No.
WaveBlaster/701	57-3029
Super Jet 95+	



## SCUPPER VALVE ASSEMBLY

Description	Part No.
Scupper Valve Assembly	SV-001



## RICH ROY PRODUCTS ADJUSTABLE HANDLEPOLE

Description	Part No.
Yamaha 96+	HP-YAM



Yamaha SJ 96+	Part No.
1 Hole Low	BR-YAM-L-1H



Yamaha SJ 96+	Part No.
2 Holes Low	BR-YAM-L-2H



## UMI RACING BILLET ALUMINUM HANDLE POLE FOR SUPER JET AND OCTANE

Yamaha Super Jet 96+, Polaris Octane	Part No.
Standard Handle Pole Black	YA-09010-BLK
Standard Handle Pole Bare Aluminum	YA-09011-CLR
-2" Handle Pole Black	YA-09012-BLK
-2" Handle Pole Bare Aluminum	YA-09013-CLR



## AC RACING ALUMINUM HANDLE POLE

Yamaha	Polish	White
Super Jet 701 96+	58-6019P	58-6019W
Super Jet 701 96+ -2"	58-6019P-2	58-6019W-2



## CARBON FIBER CHIN PAD

Description	Part No.
Carbon Fiber Chin Pad	CP-001
Carbon Fiber Chipped with Diamond X-Groove	CP-001-DIA



## CARBON CHIN PAD

Description	Part No.
Black/Green	YA96C0122BLKGRN
Black/Black	YA96C0122BLKBLK

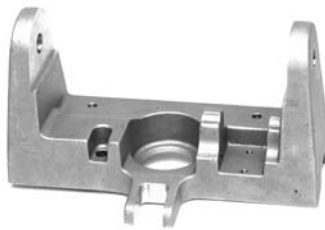
FUEL SYSTEMS  
ENGINE/GASKETS  
EXHAUST  
DRIVE LINE HANDLING  
ELECTRICAL  
WATERLINE /BILGE  
STEERING & CONTROLS  
BODY  
ACCESSORIES  
SERVICE TOOLS /HARDWARE  
CHEMICAL  
FREESTYLE & 800SXR  
FOUR STROKE

# SUPERJET 96+ FREESTYLE



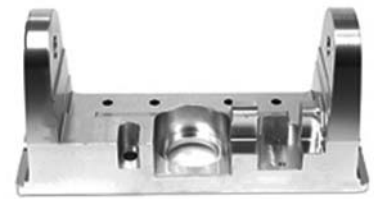
## HANDLE POLE SPRING

Yamaha Part No.  
Super Jet 96+ YAMAL050



## HOT PRODUCTS CAST HANDLE POLE PIVOT MOUNT

Description Part No.  
SJ96+ 58-5922



## U.M.I. BILLET YAMAHA HANDLE POLE BRACKET

Description Part No.  
SJ 96+ Standard YA-09000



UMI BLOWSION

## HANDLE POLE EXTENSION LIMITING ROPE

Description Part No.  
UMI Limiting Rope Kit YA-09100  
(picture shown)  
Blowsion Limiting Rope Kit AWAC127



## UMI SEALED BEARING STEERING SYSTEM

Description Part No.  
Mounting System JS-04103



## TBM SEALED BEARING STEERING SYSTEM

Description Part No.  
Kaw/Yam/Pol Sealed Bearing TBM126  
Steering System



## BLOWSION -1" SJ TURN PLATE

Yamaha Superjet 96+ Part No.  
-1" SX-R Turn Plate YAAMAL191



## TBM YAMAHA SHORTENED TURN PLATE

Yamaha Super Jet 96+ Part No.  
Shortened Turn Plate TBM102-YAM



## UMI TURN PLATE

Description Part No.  
Yamaha Super Jet Turn Plate YA-04104-CLR



## UMI FREE STYLE HANDLE BARS

Models	Surface	Pad Size	
Yamaha/Kawasaki 0 Degrees	Polish	Small	YA-01105POL
Yamaha/Kawasaki 0 Degrees	Black	Small	YA-01105BKA
Yamaha/Kawasaki 4 Degrees	Polish	Small	YA-01106POL
Yamaha/Kawasaki 4 Degrees	Black	Small	YA-01106BKA



## SATO ENGINEERING FLIP NOZZLE KIT

Description Part No.  
Super Jet Flip Nozzle Kit SE-013020-R  
Super Jet 0-5 Deg Adjustable Up Nozzle SE-013103



# SUPERJET 96+ FREESTYLE

## HYDRO-TURF SPECIAL MATS FOR YAMAHA



HT751F

HT751FD

HT751BF

\*All special mats only available in black.

Yamaha	Part No.
Super Jet (96-07) Mats for use with Wamilton Footholds	HT751F
Super Jet (96-07) Mats for use with Blowsion "Digger" Footholds	HT751FD
Super Jet (96-07) Mats for use with Blowsion "Kicker" Footholds	HT751BF
Bumber Rail Mats for (all stand up models) brands	TS50
Wamilton "Ricter" Foothold	FHWAM



## BILLET HOOD LATCH

Description	Part No.
Hood Latch Clear	YAAMAL501CL
Hood Latch Green	YAAMAL501GN
Hood Latch Red	YAAMAL501RD



## BLOWSION FOOTWELLS KLOWNERS

Description	Part No.
Klowners Footwell	AWC0127



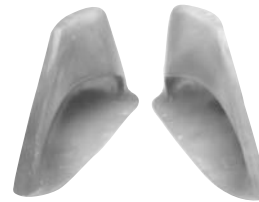
AWC0124



AWC0123

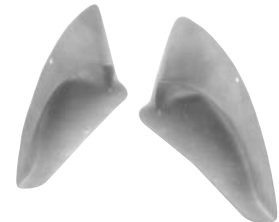
## BLOWSION DIGGER AND REC MODEL FOOTWELLS

Description	Part No.
Dawson Diggers	AWC0124
Recreational Lifters	AWC0123



## 24-7 2002 BINDING SYSTEM

Description	Part No.
2002 Binding System	BS-001



## 24-7 UNIVERSAL BINDING SYSTEM

Description	Part No.
Universal Binding System	UBS-002



## BLOWSION LOW PRO BILLET GAS CAPS

Yamaha	Part No.
Clear	04-03-100
Red	04-03-103
Black	04-03-101
Blue	04-03-102

**BLOWSION**



## SJ96+ HAND HOLD KIT STD MOUNT

Description	Part No.
Standard Hand Hold Kit	YA96C0182



## HAND HOLD KIT "Q" HOLD MOUNT

Description	Part No.
"Q" Hand Hold Kit	AWC0187



## HOOD STRAP KIT

Description	Part No.
Hood Strap Kit	AWAC125BLK

FUEL SYSTEMS  
ENGINE/GASKETS  
EXHAUST  
DRIVE LINE HANDLING  
ELECTRICAL  
WATERLINE /BILGE  
STEERING & CONTROLS  
BODY  
ACCESSORIES  
SERVICE TOOLS /HARDWARE  
CHEMICAL  
FREESTYLE & 800SXR  
FOUR STROKE

# KAWASAKI 800 SX-R CLOSED COURSE

FUEL SYSTEMS  
ENGINE/GASKETS  
EXHAUST  
DRIVE LINE HANDLING  
ELECTRICAL  
WATERLINE /BILGE  
STEERING & CONTROLS  
BODY  
ACCESSORIES  
SERVICE TOOLS /HARDWARE  
CHEMICAL  
FREESTYLE & 800SXR  
FOUR STROKE



Center to center 120 mm

Kawasaki	Part No.
800SXR	231-75146
With Billet Carb. Plate for OEM Reed	
800SXR	231-75148
With Billet Carb. Plate for MOTO TASSANARI reed	
Mounting Plate Gasket	12-0010



## JETWORKS LINKAGE

Description	Part No.
120 mm center to center	LK-2



## JSU ANGLED REED SPACER

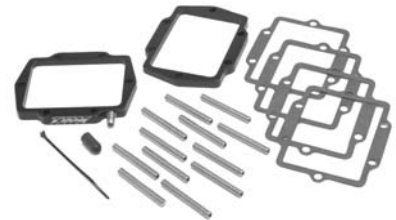
Kawasaki	Part No.
Angled Reed Spacer	JSU 800-RSK



\*Hardware not included.

## R&D REED SPACER

Kawasaki	Part No.
750/800 Spacer	251-75010
750/800 Spacer Angled	251-80000
Reed Gasket	7050
6x50mm Stainless	62-3050
Steel Studs (Sold Each)	



## TBM ANGLED REED SPACER

Kawasaki	Part No.
K750/800SXR	TBM106
Angled Reed Spacer	



## NEW V-FORCE DELTA 2

Kawasaki	Delta 2	Replacement Pedal
All Twins	V2W150-2	2P127-1



## R&D REED VALVE STUFFERS

Kawasaki	Part No.
750/800SXR OEM Manifold	271-75001
750/800SXR R&D Manifold	271-75000



## ALUMINUM AIR FILTER ADAPTER

Mikuni	Part No.
OEM 40mm "I" Series (48mm Bore)	53-4465
Sea Doo HX/XP, K750 SXI 96-02, K800SXR 03-06	

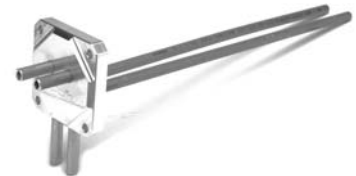


## R&D PRO-LOCK POWER PLENUM

Kawasaki	Part No.
800SXR Stock Carb (I Series Adapters Included)	200-00800
800SXR Aftermarket Carb	200-00120
120mm center to center (Adapter not included)	



Description	Part No.
Round Filter 2" Silver	53-4272-SIL
Round Filter 2" Black	53-4272-BLK
Round Filter 2" Blue	53-4272-BLU
Round Filter 2" Green	53-4272-GRN
Round Filter 2" Red	53-4272-RED
Water Repellent Pre-Filter	WR125-2DT



## BLOWSON RACING FUEL PICKUP FOR KAWASAKI SX/SXI/SXI-PRO/SXR

Description	Part No.
Billet Dual Pick Up	KASXAL144



# KAWASAKI 800 SX-R CLOSED COURSE



## R&D CAST HEAD

Kawasaki	Part No.
750/800 24cc	411-75024
750/800 25cc	411-75025
750/800 26cc	411-75026
750/800 27cc	411-75027
750 O-Ring Set of 2	080-75000
800 SXR 28cc	411-80028
800 SXR 29cc	411-80029
800 O-Ring Set of 2	080-80000
750/800 Girdle Hardware Kit	411-75000

\*Girdle kit is optional



## 800SXR WISECO PISTON

Piston Kit	Bore Size mm	Over Size mm	CC	Ring Set
<b>Kawasaki Factory Race Part</b>				
810M08250	82.50	2.50	791	3228KB
810M08296	82.96	2.96	800	8300KB

OEM Replacement	Bore Size mm	Over Size mm	CC	Ring Set
837M08200	82.00	STD	782	3228KD
837M08250	82.50	0.50	791	3248KD
837M08296	82.96	2.96	800	3268KD

Head without Girdle  
TBM107



## TBM RACING KAWASAKI 800 SXR BILLET HEAD

Description	Part No.
SX-R Head Kit with Girdle	TBM107-G
SX-R Head Kit without Girdle	TBM107
Repl O-Rings for Head Kit	TBM107-O
Dome 19cc SS 225 psi+	TBM019
Dome 22cc SS 220 psi+	TBM022
Dome 24cc Lmt'd SS 215 psi+	TBM024
Dome 26cc Lmt'd SS 210 psi+	TBM026
Dome 27cc Lmt'd SS 195 psi+	TBM027

\* Domes Sold Individually

## TBM LIMITED SPEC DOME

Description	Part No.
Lmt'd Spec Dome 22cc (+.050")	TBM022-L
Lmt'd Spec Dome 24cc (+.050")	TBM024-L
Lmt'd Spec Dome 26cc (+.050")	TBM026-L
Lmt'd Spec Dome 27cc (+.050")	TBM027-L
.060" (1.5mm) Base Gasket	7040F

\* Domes Sold Individually



## 800SXR PRO-X PISTON

	STD	.010	.020	.030	.040
Std. Bore	STD	.25mm	.50mm	.75mm	1mm
82.00	4510	4511	4512	4513	4514



## ADA KAWASAKI 800SXR BILLET GIRDLE HEAD

This head uses the stock head bolts and is completely sealed by O-rings, no head gasket required. Dual water outlets for additional cooling. This head will work with Factory Pipe's 800 dry pipe.

Kawasaki	Part No.
A800SXR/750 Girdle Head Shell**	KA800M
ADA 800SXR Girdle Kit	KA800G
ADA 800SXR Dome 22cc (225 lbs.-114 Octane)	KA8022
ADA 800SXR Dome 24cc (216 lbs.-110 Octane)	KA8024
ADA 800SXR Dome 26cc (208 lbs.-105 Octane)	KA8026
ADA 800SXR Dome 28cc (200 lbs.-98 Octane)	KA8028
ADA 800SXR Dome 30cc (190 lbs.-95 Octane)	KA8030
ADA 800SXR Dome 32cc (180 lbs.-91 Octane)	KA8032
ADA 800SXR Cable Bracket to use with stock carburetors	KA800BRK-CARB
ADA 800SXR O-Ring Kit	ORKIT750

\*\*\*All ADA Domes are sold individually



## HIGH PERFORMANCE BASE GASKETS

Kawasaki	Thickness	Part No.
800 SXR	20,000th Metal	B0075020C
800 SXR	0.030 - 0.75mm*	7040C
800 SXR	0.040 - 1.00mm*	7040D
800 SXR	0.050 - 1.25mm*	7040E
800 SXR	0.060 - 1.50mm*	7040F

\*Fiber gasket with a metal core

## KAWASAKI 800 SXR GASKETS

\* Denotes when the gasket is included in the Top End Gasket Set.

Description	OEM No.	Part No.
800 Top Kit		7300
800 Complete Kit	SXR	7310
Head Stainless Steel .010	11004-3720	7005*
Base SXR	11060-3711	7040*
Reed SXR (2 Req'd)	11060-3717	7050*
Reed SXR (2 Req'd)	11060-3757	7430*
40mm Carb SXR (4 Req'd)	11060-3761	7067*
Exhaust SXR (2 Req'd)	11060-3759	7075*
Headpipe SXR	11060-3712	7080
Upper Muffler SXR	11060-3713	7090
Muffler SXR	11060-3714	7140

FUEL SYSTEMS  
ENGINE/GASKETS  
EXHAUST  
DRIVE LINE HANDLING  
ELECTRICAL  
WATERLINE /BILGE  
STEERING & CONTROLS  
BODY  
ACCESSORIES  
SERVICE TOOLS /HARDWARE  
CHEMICAL  
FREESTYLE & 800SXR  
FOUR STROKE

# KAWASAKI 800 SX-R CLOSED COURSE

FUEL SYSTEMS  
ENGINE/GASKETS  
EXHAUST  
DRIVE LINE HANDLING  
ELECTRICAL  
WATERLINE /BILGE  
STEERING & CONTROLS  
BODY  
ACCESSORIES  
SERVICE TOOLS /HARDWARE  
CHEMICAL  
FREESTYLE & 800SXR  
FOUR STROKE



## KAWASAKI DRIVE SHAFT REBUILD KIT

Kawasaki	Part No.
800SXR Drive Shaft Rebuild Kit	54-8000



## CONNECTING RODS

Kawasaki 800 SXR	Part No.
Hot Rod	HR8131
ProX	50-3281
IMS Pro Series	423111



## HOT RODS NEW COMPLETE CRANKSHAFT ASSEMBLIES

Kawasaki	Part No.
750 96-02, 800 SXR 03-07	HR4061

## FACTORY PIPE COUPLER, CLAMP, AND MOUNT

Type	Coupler	Clamp	Mount
800SXR DRY PIPE	COMHOS0701 (3.75")		COMMNT0052
	COMHOS0094 (2.5")		
800SXR WET PIPE	COMHOS0100 (4")	COMCLP0050	

## FACTORY PIPE O-RING

Type	O-Ring Number	O-Ring Description	QTY
800SXR DRY PIPE	COMGAS0330	341 BUNA O-RING (L)	1
	COMGAS0340	344 BUNA O-RING (S)	1



## R&D KAWASAKI 800 SXR EXHAUST POWER SLEEVE

Kawasaki	Part No.
800 SXR Exhaust Power Sleeve	331-80000



## BILLET EXHAUST NOZZLE FOR 800SXR

Kawasaki	Part No.
Clear	KAALWK537CL
Green	KAALWK537GN
Red	KAALWK537RD
Black	KAALWK537BK



## TBM BILLET EXHAUST FLANGE FOR 800SXR

Kawasaki	Part No.
Black	TBM110
Polished	TBM110P



## SUPER PUMP CONE "PRO" KAWASAKI 750/800

Kawasaki	Part No.
Super Pump Cone	TBM120

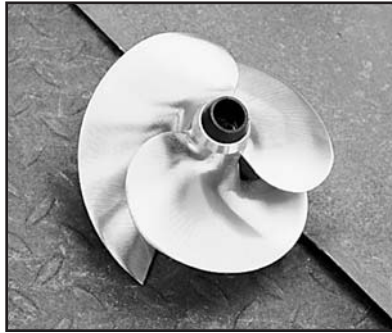


## KAWASAKI 800 SXR IMPROS CUSTOM SOLAS SET BACK IMPELLERS

Race Class	Description	Part No.
Freestyle	13/19 Solas Dynafly - 5mm	KPDF1319SB
Stock	13/21 Solas Dynafly - 5mm	KPDF1321SB
Limited	13/23 Solas Dynafly - 5mm	KPDF1323SB
Modified	14/24 Solas Dynafly - 5mm	KPDF1424SB



# KAWASAKI 800 SX-R CLOSED COURSE



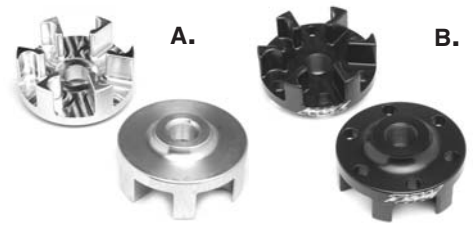
## SKAT TRAK IMPELLERS FOR 800 SXR

Description	Part No.
Stock	SK4075SW1318
Limited	SK4075SW1419
Modified	SK4075SW1520



## SOLAS DYNAPLY IMPELLER

Description	Part No.
Stock	KP-DF-13/22
Limited	KP-DF-14/23
Modified	KP-DF-15/24



## BILLET DRIVE COUPLER SET

Kawasaki	Part No.
A. 750SS 94-97, XI 93-97, ZXI 95-97, SXI 95-97, 800SXR	KA800DCS
B. 800SX Light Weight	TBM103



## R&D AQUAVEIN KAWASAKI 800SXR STEALTH

Kawasaki	Part No.
800SXR STEALTH Series	111-80001



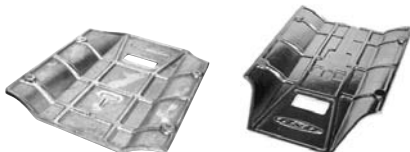
## WORX MAXILOADER

Kawasaki	Part No.
800SXR 03-06	WR222
800SXR 03-06 Dominator	WR225



## TBM RACING SUPER SCOOP™

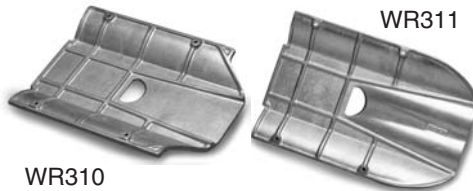
Kawasaki	Part No.
800 SXR Super Scoop	TBM100



121-80000      121-80001

## KAWASAKI 800SXR RIDE PLATES

Kawasaki	Part No.
800SXR Limited Ride Plate	121-80000
800SXR Pro Series Ride Plate	121-80001



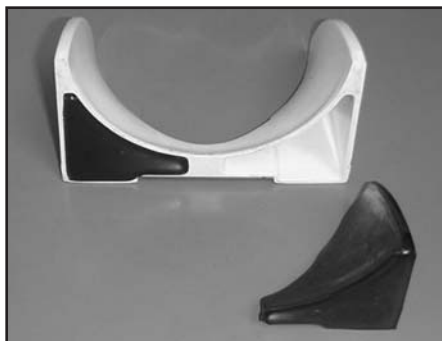
## WORX DOMINATOR RIDE PLATE

Kawasaki	Part No.
800SXR 03-06	WR310
800SXR 03-06 Double Concave	WR311



## TBM RACING "SIGNATURE SERIES" SX-R RIDE PLATE

Kawasaki	Part No.
Black	TBM123
Silver	TBM123-S



## R&D PUMP PLUG KIT

Kawasaki	Part No.
750/800 Stand-up	161-80000



## SATO ENGINEERING DROP NOZZLE KIT FOR 800SXR

Kawasaki	Part No.
Drop Nozzle Kit 800SXR	SE-013014
Cable Only (141" Long)	SE-013014-CABLE
Ring Only*	SE-013014-SIZE

FUEL SYSTEMS  
ENGINE/GASKETS  
EXHAUST  
DRIVE LINE HANDLING  
ELECTRICAL  
WATERLINE /BILGE  
STEERING & CONTROLS  
BODY  
ACCESSORIES  
SERVICE TOOLS /HARDWARE  
CHEMICAL  
FREESTYLE & 800SXR  
FOUR STROKE



# KAWASAKI 800 SX-R CLOSED COURSE



## SKAT TRAK DROP NOZZLE KIT

Kawasaki 800 SXR	Part No.
Drop Nozzle Kit 80/83	PRNKAW800SXR80
Drop Nozzle Kit 81/84	PRNKAW800SXR81
Drop Nozzle Kit 82/85	PRNKAW800SXR82
Drop Nozzle Kit 83/86	PRNKAW800SXR83
Trim Cable only	PRSTKAWSXRT



## BILLET QUICK DRAIN FOR KAWASAKI

Kawasaki	Part No.
1200 STX-R, 800 SX-R	57-4065



## TUBBIE SPONSONS

Description	Part No.
A. Tubbie 1 – Rec-Surf-Freeride-Freestyle	AWC0212
B. Tubbie 2 – Race Model Only	AWC0213
Tubbie 3 – Race Hybrid	AWC0214



## TBM 800 SXR REAR SPONSONS

Kawasaki 800 SXR	Part No.
	TBM101



## R&D G-FORCE SPONSONS

Kawasaki 800SXR Rear Sponsons	Part No.
	121-00800



## SXR BOW EYE COMPOSITE FRONT COVER

Description	Part No.
SXR Bow Eye Composite Front Cover	KASRC0840



## SX-R BILLET HOOD LATCHES

Description	Part No.
Billet Hood Latches	TBM109



## OEM SXR HOOD AIR INTAKE BLOCK-OFF KIT

Description	Part No.
Intake Block-Off	03-04-001



## JETINETICS CHARGING FLYWHEEL

Description	Part No.
Kawasaki 750/800	J305



## NEW PROGRAMMABLE IGNITION FOR 800 SX-R 800

Description	Part No.
Kawasaki 800 SXR Programmable Ignition	IGNI800SXR



## R&D KAWASAKI 750 & SX-R 800 TIMING ADVANCE KIT

Description	Part No.
R&D 750/800 Timing Advance Kit	441-75001
Replacement Timing Cover Gasket Only	8050

# KAWASAKI 800 SX-R CLOSED COURSE



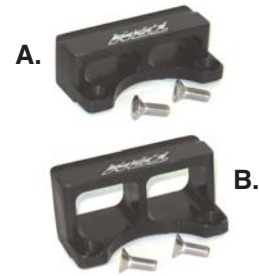
## R&D SPRING TENSIONER KAWASAKI 800SXR

<b>Kawasaki</b> 800SXR	<b>Part No.</b> 521-80000
---------------------------	------------------------------



## JSU SPRING TENSIONER KAWASAKI 800SXR

<b>Kawasaki</b> 800SXR	<b>Part No.</b> JSU-800STB
---------------------------	-------------------------------



## TBM RACING TENSIONER KAWASAKI 800SXR

<b>Kawasaki</b> A. 800SXR Short B. 800SXR Tall	<b>Part No.</b> TBM104-S TBM104-T
--	---



## UMI FREE STYLE HANDLE BARS

Models	Surface	Pad Size	Part No.
Yamaha/Kawasaki 0 Degrees	Polish	Small	YA-01105POL
Yamaha/Kawasaki 0 Degrees	Black	Small	YA-01105BKA
Yamaha/Kawasaki 4 Degrees	Polish	Small	YA-01106POL
Yamaha/Kawasaki 4 Degrees	Black	Small	YA-01106BKA



## EXTENDED HANDLE BARS

Models	Surface	Part No.
Yamaha/ Kawasaki 0 Degrees	Polished	YA-01100POL
Yamaha/ Kawasaki 4 Degrees	Polished	YA-01104POL
Yamaha/ Kawasaki 7 Degrees	Polished	YA-01101POL



## SXR BILLET HOOD BUMPER

Description	Part No.
Hood Bumper Clear	KAALWK542CL
Hood Bumper Green	KAALWK542GN
Hood Bumper Red	KAALWK542RD



## HANDLE POLE BUSHINGS

Description	Part No.
Bushing for OEM Kawasaki 750/800 Handle Pole	58-5998



## HANDLE POLE SPRING

Description	Part No.
800SXR	KA800AC



## 800SXR RAPID RATIO STEERING PLATE AND SUBSHAFT

Description	Part No.
H. R&D Rapid Ratio Steering Plate	521-80010
I. R&D Steering Subshaft	521-80020



## TBM RACING KAWASAKI OEM REPLACEMENT TURN PLATE

Description	Part No.
Kawasaki OEM Replacement Turnplate	TBM102-OE
Turn Plate Stud	TBM102-S

FUEL SYSTEMS  
ENGINE/GASKETS  
EXHAUST  
DRIVE LINE HANDLING  
ELECTRICAL  
WATERLINE /BILGE  
STEERING & CONTROLS  
BODY  
ACCESSORIES  
SERVICE TOOLS  
CHEMICAL  
FREESTYLE & 800SXR  
FOUR STROKE

# KAWASAKI 800 SX-R CLOSED COURSE



## UMI RACING BILLET ALUMINUM HANDLE POLE

Description	Part No.
Standard Black	YA-09010-BLK
Standard Clear	YA-09011-CLR
-2" Black	YA-09012-BLK
-2" Clear	YA-09013-CLR

*\*For Kawasaki 800SXR Handle Pole Conversion, please see Steps 1-2-3 on pages 124 and 125. (RRP Handle Poles include the items in Step 1)*



## RICH ROY PRODUCTS ADJUSTABLE HANDLEPOLE

Description	Part No.
Kawasaki	HD-KAW



## AC RACING ALUMINUM HANDLE POLE

Yamaha	Polish	White
750SX/800SXR	58-6015P	58-6015W
750SX/800SXR -2"	58-6015P-2	58-6015W-2



## TBM KAWASAKI BILLET GAS CAPS

Kawasaki	Part No.
Clear	TBM105-C
Black	TBM105-B
Green	TBM105-G



## HOOD BAFFLE INSERT FOR FACTORY PIPE SXR

Description	Part No.
Hood Insert	KASRCO0608



## BLOWSION BILLET GAS CAPS

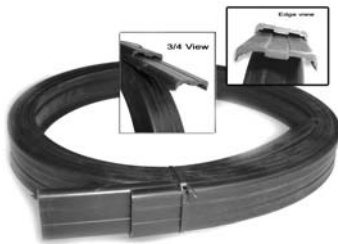
Kawasaki	Part No.
Clear	KASRAC175CL
Green	KASRAC175GN
Red	KASRAC175RD
Black	KASRAC175BK



## TBM SPLASH GUARD

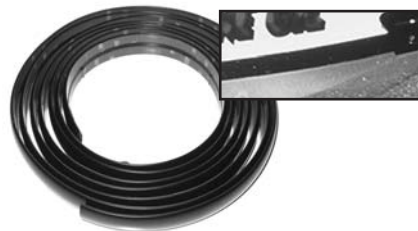
FOR STAND-UP MODEL PWC

Description	Part No.
Splash Guard	TBM128



## SXR SIDE RAIL MOLDINGS

Description	Part No.
Standup Kit Setup 98" per side	JSU-800-BUMPER



## SX-R TBM RACE BUMPERS

Description	Part No.
Bumpers 800SXR	TBM117



## RIVA 800 SX-R RAIL MOLDING KITS

Description	Part No.
SX-R	RK5-RMK-080





# KAWASAKI 800 SX-R CLOSED COURSE

800 SXR



Green/White

**Kawasaki** Part No. **KA800SXRCP-SUPER**  
Super Chin Pad

800 SXR



Flame-Red

**Kawasaki** Part No. **KA800SXRCP-FL-RD**  
Super Chin Pad

800 SXR



Flame-Green

**Kawasaki** Part No. **KA800SXRCP-FL-GN**  
Super Chin Pad

800 SXR



New Design Rail Cap

**Kawasaki** Part No. **KA800SXRRCNW**  
New Rail Cap

\* Must use with KA800SXRRMRC

800 SXR



Side Mat for New Rail Cap

**Kawasaki** Part No. **KA800SXRRMRC**  
Side Mat

\* This Side Mat is specially designed for wrapping onto New Rail Cap.

800 SXR



Kick Tail

**Kawasaki** Part No. **KA800KICK**  
Kick Tail



## COVERCRAFT COVER

**Description** Part No.  
800 SXR XW865BL



## AP DESIGNS 800 SXR MAT

**Kawasaki** Part No.  
Side Mat KA800SXSM  
Side Mat with Lifter 10" KA800SXSM-LFT  
Side Mat with Lifter 15" KA800SXSM-LFT15  
Bottom Mat KA800SXRBM



KICK01

KICK02



HT68K

## KICK TAIL

Add a kick tail to your watercraft 1" or 2" wedge. If installed under the traction mats, some models of watercraft may require an extended mat.

**Description** Part No.  
Kick Tail 5.5" x 17" x 1" Tall KICK01  
KAW800SXR Mat with Kick Tail HT68K-BLK  
Kick Tail 5.5" x 17" x 2" Tall KICK02



HT67F

HT68BF

HT68RC

\*All special mats only available in black.

## HYDRO-TURF SPECIAL MATS FOR KAWASAKI

**Kawasaki** Part No.  
750SXI Mats for use with "Digger" Footholds HT67F  
800 SXR Mats for use with "Kicker" Footholds and Blowsion Rail Caps HT68BF  
800 SXR Mats with 1" kick tail for use with Blowsion Rail Caps HT68RC  
Blowsion Dawson "Digger" Footholds AWCO124  
Blowsion "Kicker" Footholds AWCO125  
Blowsion Composite Rail Caps KASRUP402

FUEL SYSTEMS
ENGINE/GASKETS
EXHAUST
DRIVE LINE HANDLING
ELECTRICAL
WATERLINE/BILGE
STEERING & CONTROLS
BODY
ACCESSORIES
SERVICE TOOLS/HARDWARE
CHEMICAL
FREESTYLE & 800SXR
FOUR STROKE