

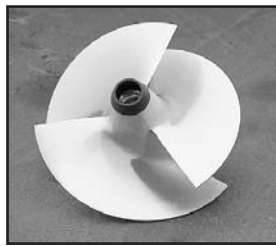
# Skat-Trak

Performance Products USA



## SWIRL IMPELLER

A radial edge designed for maximum acceleration increase, and drastically increases rough water hook-up. Ideal for closed-course race conditions, and used by many top racers.



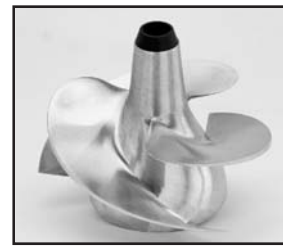
## SUPER SLIMLINE IMPELLER

Features an Improved Ultra-Slim hub design for maximum top speed results in many current watercraft. This is a common grudge-racer impeller.



## SLIMLINE IMPELLER

A slim design impeller used on many entry-level craft. This impeller is more efficient than the common large hub style that come stock in many late model craft today.



## STANDARD DESIGN IMPELLER

The original standard impeller, although dated compared to the newer slim type impellers, is still widely used in certain applications. Some craft need to limit the volume to retain proper rpm levels, and the standard impeller produces great rpm, and overall performance values.

## SKAT-TRAK NOSE BOOT AND O-RING FOR REPLACEMENT



### Description

1. SJ/FX
2. KAW/SD/YAM/SWIRL
3. YAM GPR.XL-L
4. SD SUPER SLIM LINE
5. O-RING KAWASAKI
6. 750/900 PLUG O-RING
7. O-RING SEA DOO

### Part No.

- |                        |            |
|------------------------|------------|
| 1. SJ/FX               | SK-NB6     |
| 2. KAW/SD/YAM/SWIRL    | SK-NB7     |
| 3. YAM GPR.XL-L        | SK-NB155XL |
| 4. SD SUPER SLIM LINE  | SK-NBSSL   |
| 5. O-RING KAWASAKI     | SK-KAW-O   |
| 6. 750/900 PLUG O-RING | SK-750P    |
| 7. O-RING SEA DOO      | SK-SD-O    |

## 1988-2006 SEA-DOO WATERCRAFT IMPELLER APPLICATIONS GUIDE

**Skat-Trak**

Performance Products USA

### RECOMMENDED SKAT-TRAK IMPELLER

Model	Year	Engine	Orig. Imp.	Pump Dia.	Stock Engine	Limited Engine	Modified Engine
LRV DI	02-04	951	n/a	155.5mm	SS5583SW1418	SS5583SW1319	SS5583SW1320
LRV	00-01	951	n/a	155.5mm	SS5583SW1418	SS5583SW1319	SS5583SW1320
3D DI	2006	951	n/a	155.5mm	SS5583SW1319	Call for application	Call for application
3D Base	2005	800	n/a	155.5mm	SS5583SW1016	Call for application	Call for application
3D Premium	2005	800	n/a	155.5mm	SS5583SW1016	Call for application	Call for application
RXP	04-06	1494 SC	n/a	159.8mm	SS598328SW1021	Call for application	Call for application
RXT	05-06	1494 SC	n/a	159.8mm	SS598328SW1021	Call for application	Call for application
RXX	01	951	16/23 D-75 Mag	148mm	SSD75SW1623	Call for application	Call for application
RX Di	00-04	951	n/a	155.5mm	SS5583SW1319	SS5583SW1320	SS5583SW1321
RX	00-02	951	n/a	155.5mm	SS5583SW1319	SS5583SW1320	SS5583SW1321
XP Di	03-04	951	n/a	155.5mm	SS5583SW1320	SS5583SW1321	Call for application
XP Ltd.	98-02	951	13/21	155.5mm	SS5583SW1321	SS5583SW1321	SS55831322
XP 800	97	800	16/23	140mm	*SSSW1722 or SSSS1726**	*SSSW1723 or SSSS1726**	*SSSW1724B or SSSS17.527**
	95-96	800	17/25	140mm	*SSSW1722 or SSSS1726**	*SSSW1723 or SSSS1726**	*SSSW1724B or SSSS17.527**
XP	95	720	10/22	140mm	*SSSW1621 or SSSL1520**	SSSW14.522.5	SSSW1722 to SSSW1724B
	94	650	16/24	140mm	*SSSW1520 or SSSL1419**	*SSSW1520 or SSSL1419**	*SSSW1621 or SSSL1520**
	93	650	15/20.5	140mm	*SSSW1419 or SSSL1318**	*SSSW1520 or SSSL1419**	*SSSW1621 or SSSL1520**
	91-92	580	19	140mm	SSSL1318	*SSSL1318 or SSSL1419**	SSSL1419 to SSSL1621
GSX Ltd.	98-99	951	16/21	155.5mm	SS5583SW1320	SS5583SW1320	SS5583SW1321
	97 1/2	951	n/a	155.5mm	SS55551418	SS55551418	SS55551419
GSX RFI	99-01	800	12/25	140mm	SS4075SW1621	SS4075SW1622	SS4075SW1623
GSX	96-97	800	17/24,16/23	140mm	*SSSW1722 or SSSS1625**	*SSSW1723 or SSSS1726**	*SSSW1724B or SSSS17.527**
Gsi	97	720	11/22	140mm	*SSSW1621 or SSSL1520**	SSSW14.522.5	SSSW1722 to SSSW1724B
GS	98-01	720	11/22, 14/21	140mm	SSSW1520	SSSW1621	SSSW14.522.5
	97	720	10/35 al	140mm	*SSSW1621 or SSSL1520**	SSSW14.522.5	SSSW1722 to SSSW1724B
HX	95-97	720	10/22,11/24	140mm	*SSSW1621 or SSSL1520**	SSSW14.522.5	SSSW1722 to SSSW1724B

# 1988-2006 SEA-DOO WATERCRAFT IMPELLER APPLICATIONS GUIDE

## RECOMMENDED SKAT-TRAK IMPELLER

Model	Year	Engine	Orig. Imp.	Pump Dia.	Stock Engine	Limited Engine	Modified Engine
SPX	97-99	800	16/24, 16/23	140mm	*SSSW1722 or SSSS1726*	SSSW1723/SSSS1726	*SSSW1724B or SSSS17.527
	96	720	11/24	140mm	*SSSW1621 or SSSL1520*	SSSW14.522.5	SSSW1722 to SSSW1724B
	95	650	11/21	140mm	*SSSW1520 or SSSL1419*	*SSSW1520 or SSSL1419**	*SSSW1621 or SSSL1520**
	94	650	14/21.5	140mm	*SSSW1419 or SSSL1318*	*SSSW1520 or SSSL1419**	*SSSW1621 or SSSL1520**
	93	580	16/20.5	140mm	SSSL1318	*SSSL1318 or SSSL1419**	SSSL1419 to SSSL1621
SPi	94-96	580	14/21	140mm	SSSL1318	*SSSL1318 or SSSL1419**	SSSL1419 to SSSL1621
	93	580	17.7	140mm	SSSL1318	*SSSL1318 or SSSL1419**	SSSL1419 to SSSL1621
SP	97	720	16/35 al	140mm	SSSW1520/SSSL1419	SSSW14.522.5	SSSW1722 to SSSW1724B
	88-96	580	18.8 al	140mm	SSSL1318	*SSSL1318 or SSSL1419**	SSSL1419 to SSSL1621
GTX 4-Tec	02-04	1494	n/a	155.8mm	SSS58323SW1520	SSS58323SW1621	Call for application
4-Tec SC	03-04	1494 SC	n/a	155.8mm	SSS58323SW1621	Call for application	Call for application
4-Tec Tow	03-04	1494	n/a	155.8mm	SSS58323SW1520	SSS58323SW1621	Call for application
WAKE	05-06	1494	n/a	155.8mm	SSS58323SW1520	Call for application	Call for application
GTX DI	00-03	951	n/a	155.5mm	*SSS583SW1319 or SSS583SW1418**	SSS583SW1320	SSS583SW1321
GTX Ltd.	05-06	1494 SC	n/a	159.8mm	SSS98328SW1021	Call for application	Call for application
GTX Ltd.	98-02	951	13/21	155.5mm	SSS583SW1319	SSS983SW1319	SSS583SW1321
GTX RFI	98-02	800	16/24, 12/25	140mm	SSS4073SW1622	SS4075SW1623	SS4075SW1623
GTX SC	05-06	1494 SC	n/a	159.8	SSS98328SW1021	Call for application	Call for application
GTX	05-06	1494	n/a	155.8mm	SSS58323SW1520	Call for application	Call for application
	96-97	800	17/25, 12/24	140mm	*SSSW1722 or SSSS1625**	*SSSW1723 or SSSS1726	*SSSW1724B or SSSS17.527**
	95	650	10/22	140mm	*SSSW1520 or SSSL1419**	*SSSW1520 or SSSL1419	*SSSW1621 or SSSL1520**
	94	650	15/20	140mm	*SSSW1419 or SSSL1318**	*SSSW1520 or SSSL1419	*SSSW1621 or SSSL1520**
	92-93	580	18.3	140mm	SSSL1318	*SSSL1318 or SSSL1419	*SSSL1419 or SSSL1621**
GTS	01-02	720	n/a	155.5mm	SSS583SW1016	*SSS583SW1016 or SSS583SW1117**	Call for application
Gti LE RFI	03-04	800	n/a	155.5mm	SSS583SW1016	SSS583SW1117	Call for application
Gti LE	02-05	720	n/a	155.5 mm	SSS583SW1016	*SSS583SW1016 or SSS583SW1117**	Call for application
Gti RFI	04-05	800	n/a	155.5mm	SSS583SW1016	SSS583SW1117	Call for application
Gti SE	2006	1494	n/a	159.8mm	SSS98328SW1317	Call for application	Call for application
Gti	2006	1494	n/a	n/a	SSS98328SW1317	Call for application	Call for application
	02-05	720	n/a	155.5 mm	SSS583SW1016	*SSS583SW1016 or SSS583SW1117**	Call for application
	99-01	720	n/a	140mm	SS4075SW1621	SS4075SW1622	Call for application
	96-98	720	11/24, 11/22	140mm	*SSSW1621 or SSSL1520**	SSSW14.522.5	SSSW1722 to SSSW1724B
GTS	01-02	720	n/a	155.5mm	SSS583SW1016	SSS583SW1117	Call for application
	97-00	720	11/22	140mm	*SSSW1621 or SSSL1520**	SSSW14.522.5	*SSSW1722 to SSSW1724B
	94-96	580	14/21, 15/21, 10/25	140mm	SSSL1318	*SSSL1318 or SSSL1419**	SSSL1419 to SSSL1621
	92-93	580	17	140mm	SSSL1318	*SSSL1318 or SSSL1419**	SSSL1419 to SSSL1621
GT	90-91	580	17 al	140mm	SSSL1318	*SSSL1318 or SSSL1419**	SSSL1419 to SSSL1621

\* Suggested for maximum bottom-to-mid range acceleration gains. \*\* Suggested for maximum top speed gains. NOTE: 17/24B is **NOT** as aggressive as the original 17/24 swirl impeller. Refer to the USBA Rulebook for a more detailed definition of "stock, Limited, and Modified."

## IMPELLER DESIGNS AND PITCHES AVAILABLE

SWIRL		SLIM LINE		155/83 SWIRL		140/75 SWIRL		155 SSL	
PITCH	PART NUMBER	PITCH	PART NUMBER	PITCH	PART NUMBER	PITCH	PART NUMBER	PITCH	PART NUMBER
12/17	SSSW1217	12/17	SSSL1217	10/16	SSS583SW1016	16/21	SS4075SW1621	14/18	SSS55S1418
13/18	SSSW1318	13/18	SSSL1318	11/17	SSS583SW1117	16/22	SS4075SW1622	14/19	SSS55S1419
14/19	SSSW1419	14/19	SSSL1419	13/18	SSS583SW1318	16/23	SS4075SW1623		
15/20	SSSW1520	15/20	SSSL1520	13/19	SSS583SW1319				
16/21	SSSW1621	16/21	SSSL1621	13/20	SSS583SW1320				
14.5/22.5	SSSW14.522.5	17/22	SSSL1722	13/21	SSS583SW1321				
16/23	SSSW1623			13/22	SSS583SW1322				
16/24	SSSW1624			14/18	SSS583SW1418				
16/25	SSSW1625								
17/22	SSSW1722								
17/23	SSSW1723								
17/24B	SSSW1724B								
17/24	SSSW1724								

### SSL

PITCH	PART NUMBER
16/25	SSSS1625
17/26	SSSS1726
17.5/27	SSSS17.527

### 155/83/23 SWIRL

PITCH	PART NUMBER
15/20	SSS588323SW1520
16/21	SSS588323SW1621

### 155/83 SSL

PITCH	PART NUMBER
13/19	SSS583SS1319
13/20	SSS583SS1320
13/21	SSS583SS1321

### 159-83-28

PITCH	PART NUMBER
10/21	SSS98328SW1021
13/17	SSS98328SW1317

## 1977-2006 HONDA WATERCRAFT IMPELLER APPLICATIONS GUIDE

### RECOMMENDED SKAT-TRAK IMPELLER

Model	Year	Engine	Orig. Imp.	Pump Dia	Stock Engine	Limited Engine	Modified
Aquatrax F-12	03-04	1235	n/a	155mm	SH5580SW1221	Call for application	Call for application
Aquatrax F-12	05-06	1235	n/a	147mm	SH4775SW1523	Call for application	Call for application
Aquatrax F-12X Turbo	03-06	1235	n/a	155mm	SH5580SW1728	Call for application	Call for application
Aquatrax F-12X GPScape	05-06	1235	n/a	155mm	SH5580SW1728	Call for application	Call for application
Aquatrax R-12	04-06	1235	n/a	155mm	SH5580SW1221	Call for application	Call for application
Aquatrax R-12X Turbo	03-06	1235	n/a	155mm	SH5580SW1728	Call for application	Call for application

FUEL SYSTEMS  
ENGINE/GASKETS  
EXHAUST  
DRIVE LINE HANDLING  
ELECTRICAL  
WATERLINE /BILGE  
STEERING & CONTROLS  
BODY  
ACCESSORIES  
SERVICE TOOLS /HARDWARE  
CHEMICAL  
FREESTYLE & BOOSXR  
FOUR STROKE

## RECOMMENDED SKAT-TRAK IMPELLER

Model	Year	Engine	Orig. Imp.	Pump Dia.	Stock Engine	Limited Engine	Modified Engine
SUV 1200	99-04	1131	15.2	155mm	SY55XLSW1218R	*SY55XLSW1218R or SY55XLSW1319R**	SY55XLSW1319R
VX 110	2006	1052	n/a	155mm	SY55KYSW1623	Call for application	Call for application
VX 110 Delux	2005	1052	21.2	155mm	SY55KYSW1523	Call for application	Call for application
VX 110 Sport	05-06	1052	21.2	155mm	SY55KYSW1523	Call for application	Call for application
FX H.O.	04-06	1052	16.8	155mm	SY55XLSMW1824	Call for application	Call for application
FX-140	02-05	998	16.3	155mm	SY55XLSW1319R	*SY55XLSW1319R or SY55XLSW1420R**	Call for application
FX Cruiser H.O. 50th	2006	1052	n/a	155mm	SY55XLSMW1824	Call for application	Call for application
FX Cruiser H.O.	04-06	1052	16.8	155mm	SY55XLSMW1824	Call for application	Call for application
FX Cruiser	03-06	998	17	155mm	SY55XLSW1319R	*SY55XLSW1319R or SY55XLSW1420R*	Call for application
FX	2006	998	n/a	155mm	SY55XLSW1319R	Call for application	Call for application
GP 1200	97-99	1131	16.5/19, 15.2	155mm	*SY55SW1419 or SY55SSL1319**	*SY55XLSW1419 or SY55SSL1420**	SY55SSL14.521
GP 1300R	03-04	1296	n/a	155mm	*SY55XLSW1319R or SY55SW1321R**	*SY55XLSW1319R or SY55XLSW1420R**	SY55XLSW1319R
GP 1300R	05-06	1296	n/a	155mm	SY55XLSMW1319R	SY55XLSMW1320R	SY55XLSMW1321R
GP 1200R	99-02	1131	16/19	155mm	SY55XLSW1319R	*SY55XLSW1319R or SY55XLSW1420R**	SY55XLSW1420R
GP 800	98-00	784	15/21, 17/1	144mm	SY44SS1420	SY44SS1422	SY44SS1422
GP 800R	01-05	784	13.2	155mm	SY55XLSW0714	Call for application	Call for application
GP 760	97-00	754	17/20	144mm	SY44SS1420	SY44SS1420	SY44SS1422
Raider 1100	95-96	1100	16/19	155mm	*SY55SW1419 or SY55SSL1420**	*SY55SW1419 or SY55SSL1420**	SY55SSL14.521
Raider 760	96	760	17/20	144mm	SY44SS1420	SY44SS1420	SY44SS1422
Raider 701	94-95	701	17/20	144mm	SY44SS14.518.5	SY44SS1519	SY44SS1420
	96-97	701	13/16 al	144mm	SY44SS1418	SY44SS14.518.5	SY44SS1420 to SY44SS1519
Raider DLX	95	701	17/20	144mm	SY44SS14.518.5	SY44SS1519	SY44SS1420
XLT 1200 Ltd.	99-05	1176	15.2, 15.6	155mm	SY55XLSW1218R	*SY55XLSW1218R or SY55XLSW1319R**	SY55XLSW1420R
XL 1200	98-99	1176	13/19	155mm	SY55SW1217	SY55SW1318	SY55SW1318
Venture 1100	96-97	1100	16/19	155mm	*SY55SW1419 or SY55SSL1319**	*SY55SW1419 or SY55SSL1420**	SY55SSL14.521
XLT 800	00-04	784	n/a	155mm	SY55XLSW1016	Call for application	Call for application
XL 760	98-00	754	11/14	155mm	SY55SW0714	Call for application	Call for application
XL 700	99-04	701	11/14	155mm	SY55SW0712	SY55SW0714	Call for application
Venture 760	97	760	11/14	155mm	SY55SW0714	SY55SW0714	Call for application
Venture 700	98	701	11/14	155mm	SY55SW0712	SY55SW0714	Call for application
	95-96	701	17/20	144mm	SY44SS14.518.5	SY44SS1519	SY44SS1420
Blaster 2	96-97	760	13/16	155mm	SY55SW0714	SY55SW0714	Call for application
Blaster	93-96	701	15/18	144mm	SY44SS1418	SY44SS14.518.5	SY44SS1420 to SY44SS1519
Pro VXR	93-94	701	15/18	144mm	SY44SL1419	SY44SL1419	SY44SL1419 to SY44SL1520
VXR	91-95	650	14/19 al	144mm	SY44SL1318	SY44SL1419	SY44SL1419 to SY44SL1520
Wave 3 GP	94-95	701	15/18	144mm	*SY44SL1318 or SY44SL1419**	SY44SL1419	SY44SL1419 to SY44SL1520
Wave 3	97	701	13/16 al	144mm	SY44SL1318	SY44SL1318 to SY44SL1419	SY44SL1419 to SY44SL1520
	91-96	650	13/16 al	144mm	SY44SL1318	SY44SL1318 to SY44SL1419	SY44SL1419 to SY44SL1520
Super Jet	94-06	701	13/16	144mm	SY44SS1418	SY44SS14.518.5	SY44SS1420 to SY44SS1519
	90-93	650	14/19 al	144mm	SY44SS1418	SY44SS14.518.5	SY44SS1420 to SY44SS1519
SJ Free Style	all	all	n/a	144mm	SY44SW1217/SY44SW1317/SY44SW1318	SY44SW1419/SY44SW1520	SY44SS1519/SY44SW1520/SY44SW1621
FX-1	94-95	701	21/27 al	n/a	SYFX1SL1924	SYFX1SL1924	SYFX1SL2025
LX 650	all	650	17 al	n/a	SYLX1619	SYLX1619	SYLX1720
Wave 500	all	500	16 al	n/a	SY500WR1316	SY500WR1316	SY500WR1417

\* Suggested for maximum bottom-to-mid range acceleration gains. \*\* Suggested for maximum top speed gains. Refer to the USBA Rulebook for a more detailed definition of "Stock, Limited, and Modified."

## IMPELLER DESIGNS AND PITCHES AVAILABLE

### 155-75-22 SWIRL

PITCH	PART NUMBER
13/19	SY55XLSW1319
13/19R	SY55XLSW1319R
13/20	SY55XLSW1320
13/20R	SY55XLSW1320R
13/21	SY55XLSW1321
13/21R	SY55XLSW1321R
18/23	SY55XLSW1823
18/23R	SY55XLSW1823R
18/24	SY55XLSW1824
18/24R	SY55XLSW1824R
18/25	SY55XLSW1825
18/25R	SY55XLSW1825R

### 155-61-22 SWIRL

PITCH	PART NUMBER
7/12	SY55XLSW0712
7/14	SY55XLSW0714
10/16	SY55XLSW1016
12/18R	SY55XLSW1218R
13/18	SY55XLSW1318
13/19	SY55XLSW1319
13/19R	SY55XLSW1319R
14/19	SY55XLSW1419
14/20	SY55XLSW1420
14/20R	SY55XLSW1420R
14/22	SY55XLSW1422
15/20	SY55XLSW1520

### 155-75-20 YAM SWIRL

PITCH	PART NUMBER
16/23	SY55KYSW1623
17/24	SY55KYSW1724

### 155-61-20 SSL

PITCH	PART NUMBER
14/18	SY55SSL1319
14.5/21	SY55SSL14.521
14/20	SY55SSL1420

† Super Slim Line

### 155-61-20 SWIRL

PITCH	PART NUMBER
7/12	SY55SW0712
7/14	SY55SW0714
12/17	SY55SW1217
13/18	SY55SW1318
14/19	SY55SW1419
15/20	SY55SW1520
16/21	SY55SW1621

### 144 SWIRL

PITCH	PART NUMBER
12/17	SY44SW1217
13/17	SY44SW1317
13/18	SY44SW1318
14/19	SY44SW1419
15/19	SY44SW1519
15/20	SY44SW1520
16/21	SY44SW1621

### 144 SLIM LINE

PITCH	PART NUMBER
13/18	SY44SL1318
14/19	SY44SL1419
15/20	SY44SL1520
16/21	SY44SL1621

### 144 SSL

PITCH	PART NUMBER
14/18	SY44SS1418
14.5/18.5	SY44SS14.518.5
14/20	SY44SS1420
14/22	SSY44SS1422
15/19	SY44SS1519

## RECOMMENDED SKAT-TRAK IMPELLER

Model	Year	Orig. Imp.	Pump Dia.	Stock Engine	Limited Engine	Modified Engine
Ultra 130 Di	01-04	n/a	Tapered	SK150SW1419	SK150SW1520	SK150SW1421/SK150SW1422/SK150SW1423
Ultra 150	99-05	n/a	Tapered	SK150SW1419	SK150SW1420	SK150SW1421/SK150SW1422/SK150SW1423
STX 12-F	04-06	n/a	148mm	*SK1100SW1319 or SK1100SW1319R**	SK1100SW1420	Call for application
STX 15-F	04-06	n/a	148mm	*SK1100SW1319 or SK1100SW1319R**	Call for application	Call for application
1200 STX-R	02-05	n/a	148mm	*SK1100SW1424 or SK1100SW1424R**	*SK1100SW1424 or SK1100SW1424R**	*SK1100SW1424 or SK1100SW1424R**
1100 STX DI	00-03	n/a	148mm	SK1100SW1319R	SK1100SW1420	SK1100SW1420
1100 STX	97-99	8/22	148mm	SK1100SW1318	SK1100SW1318 to SK1100SW1319	SK1100SW1420 to SK1100SW1424
900 STX	01-06	12/17	148mm	SK1100SW1217	SK1100SW1318	SK1100SW1419
	97-00	10/24	140mm	*SK900SW1419 or SK900SL1520**	*SK900SW1419 or SK900SL1621**	*SK900SW1520 or SK900SL1722**
1100 ZXi	99-03	7/20	148mm	SK1100SW1318	*SK1100SW1318 or SK1100SW1319**	SK1100SW1420 to SK1100SW1424
900 ZXi	95-97	14/22	140mm	*SK900SW1419 or SK900SL1520**	*SK900SW1419 or SK900SL1621**	*SK900SW1520 or SK900SL1722**
900 STS	01-02	n/a	140mm	SK900SL1621	SK900SL1722	SK900SL1723
750 ZXi	95-97	14/22	140mm	SK900SW1318	SK900SW1318 to SK900SW1419	SK900SW1419 to SK900SW1520
750 Xi Sport	98-99	13/18	140mm	*SK900SW1217 or SK750ST1018**	*SK900SW1217 or SK750ST1119**	*SK900SW1318 or SK900SL1318**
750 Xi	96-97	13/18	140mm	*SK900SW1217 or SK750ST1018**	*SK900SW1217 or SK750ST1119**	*SK900SW1318 or SK900SL1318**
	93-95	8/16 5-blade	140mm	SK750ST1018	SK750ST1119	*SK900SW1318 or SK900SL1318**
800 SX-R	03-06	n/a	140mm	SK4075SW1318	SK4075SW1419	SK4075SW1520
750 Sxi Pro	98-02	9/17	140mm	*SK750ST0917 or SK750ST1018**	*SK900SW1217 or SK750ST1018**	*SK900SW1318 or SK900SL1318**
750 Sxi	95-96	9/17	140mm	*SK750ST0917 or SK750ST1018**	*SK900SW1217 or SK750ST1018**	*SK900SW1318 or SK900SL1318**
750 SX	92-95	14/19 alum.	140mm	SK750ST0917	SK750ST0917 to SK750ST1018	*SK900SW1318 or SK900SL1318**
750 SS	96-97	12/17	140mm	SK750ST0917	SK750ST0917 to SK750ST1018	*SK900SW1318 or SK900SL1318**
	92-95	14/19 alum.	140mm	SK750ST0917	SK750ST0917 to SK750ST1018	*SK900SW1318 or SK900SL1318**
750 XIR	94	9/17	140mm	SK750ST0917	SK750ST0917 to SK750ST1018	*SK900SW1318 or SK900SL1318**
750 STX	98	12/17	140mm	*SK900SW1217 or SK750ST1018**	SK900SW1318	SK900SW1419
750 STS	96-97	12/17	140mm	*SK900SW1217 or SK750ST1018**	*SK900SW1217 or SK750ST1119**	*SK900SW1318 or SK900SL1318**
	95	13/18	140mm	*SK900SW1217 or SK750ST1018**	*SK900SW1217 or SK750ST1119**	*SK900SW1318 or SK900SL1318**
750 ST	95	13/21	140mm	SK750ST0917	SK750ST0917 to SK750ST1018	*SK900SW1318 or SK900SL1318**
	93-94	10/18 alum. 5-bl.	140mm	SK750ST0917	SK750ST0917 to SK750ST1018	*SK900SW1318 or SK900SL1318**
650 TS	89-96	16.5 alum.	140mm	SK650ST0917	SK650ST0917 to SK650ST1018	SK650ST1119
650 SX	86-93	15 alum.	140mm	SK650ST0816	SK650ST0917	SK750ST1018 to SK750ST1119
650 X-2	86-95	18 alum.	140mm	SK650ST0816	SK650ST0917	SK750ST1018 to SK750ST1119
650 SC	91-95	16.5 alum.	140mm	SK650ST0917	SK650ST0917 to SK650ST1018	SK650ST1119
650 JM	91-92	15 alum.	140mm	SK650ST0917	SK650ST0917 to SK650ST1018	SK650ST1119
550 SX	90-95	17.5 alum.	Tapered	SK550SX1316	SK550SX1316	SK550SX1417
550 JS	82-89	16 alum.	Tapered	SK550ST1316	SK550ST1316	SK550ST1417
440 JS	77-94	15 alum.	121.7mm	SK440ST1316	SK440ST1316	SK440ST1417
300 SX	87-91	15 alum.	121.7mm	SK440ST1316	SK440ST1316	SK440ST1417
300 JS	86-88	15 alum.	121.7mm	SK440ST1316	SK440ST1316	SK440ST1417

\* Suggested for maximum bottom-to-mid range acceleration gains. \*\* Suggested for maximum top speed gains. Refer to the USBA Rulebook for a more detailed definition of "Stock, Limited, and Modified."

## IMPELLER DESIGNS AND PITCHES AVAILABLE

### 300/440

PITCH	PART NUMBER
13/16	SK440ST1316
14/17	SK440ST1417
15/18	SK440ST1518
15	SK440ST15.0
15.5	SK440ST15.5
16	SK440ST16.0
16.5	SK440ST16.5
17	SK440ST17.0
17.5	SK440ST17.5
18	SK440ST18.0

### 550 JS

PITCH	PART NUMBER
13/16	SK550ST1316
14/17	SK550ST1417
15/18	SK550ST1518
15	SK550ST15.0
15.5	SK550ST15.5
16	SK550ST16.0
16.5	SK550ST16.5
17	SK550ST17.0
17.5	SK550ST17.5

### 550 SX

PITCH	PART NUMBER
13/16	SK550SX1316
14/17	SK550SX1417
15/18	SK550SX1518
15	SK550SX15.0
15.5	SK550SX15.5
16	SK550SX16.0
16.5	SK550SX16.5
17	SK550SX17.0
17.5	SK550SX17.5

### 650 STANDARD

PITCH	PART NUMBER
8/16	SK650ST0816
9/17	SK650ST0917
10/18	SK650ST1018
11/19	SK650ST1119
12/20	SK650ST1220
15	SK650ST15.0
15.5	SK650ST15.5
16	SK650ST16.0
16.5	SK650ST16.5
17	SK650ST17.0

### 750 STANDARD

PITCH	PART NUMBER
8/16	SK750ST0816
9/17	SK750ST0917
10/18	SK750ST1018
11/19	SK750ST1119
12/20	SK750ST1220

### 1100/1200 SWIRL

PITCH	PART NUMBER
12/17	SK1100SW1217
13/18	SK1100SW1318
13/19	SK1100SW1319
13/19R	SK1100SW1319R
14/19	SK1100SW1419
14/20	SK1100SW1420
14/23	SK1100SW1423
14/24	SK1100SW1424
14/24R	SK1100SW1424R
14/25	SK1100SW1425
14/25R	SK1100SW1425R
16/25	SK1100SW1625

### 750/900 SWIRL

PITCH	PART NUMBER
12/17	SK900SW1217
13/18	SK900SW1318
14/19	SK900SW1419
15/20	SK900SW1520
16/21	SK900SW1621
17/22	SK900SW1722

### 750/900 SLIM LINE

PITCH	PART NUMBER
12/17	SK900SL1217
13/18	SK900SL1318
14/19	SK900SL1419
15/20	SK900SL1520
16/21	SK900SL1621
17/22	SK900SL1722
18/23	SK900SL1823

### 140-75 SWIRL

PITCH	PART NUMBER
9/17	SK4075SW0917
10/18	SK4075SW1018
13/18	SK4075SW1318
14/18	SK4075SW1418
14/19	SK4075SW1419
15/20	SK4075SW1520

### ULTRA 150 SWIRL

PITCH	PART NUMBER
14/19	SK150SW1419
14/20	SK150SW1420
14/21	SK150SW1421
14/22	SK150SW1422
14/23	SK150SW1423
14/24	SK150SW1424

FUEL SYSTEMS  
ENGINE/GASKETS  
EXHAUST  
DRIVE LINE HANDLING  
ELECTRICAL  
WATERLINE /BLIGE  
STEERING & CONTROLS  
BODY  
ACCESSORIES SERVICE TOOLS  
/HARDWARE  
CHEMICAL  
FREESTYLE & 800SX  
FOUR STROKE



## NuJet DESTROYER STAINLESS STEEL IMPELLER

The Destroyer has a unique 3-D blade design with a super-progressive pitch and minimal blade overlap. Minimizing the amount of overlap increases the efficiency of the Destroyer giving harder acceleration throughout the power band and higher top speeds and reduced cavitation for better performance in all water conditions.



### SEA D00

SD-A5.5	SD-A6.1
SD-B5.0	SD-A6.2L
SD-B5.5	SD-A6.5
SD-B5.7L	SD-B6.5L
SD-A6.0	
SD-B6.0L	

### YAMAHA

YM-A5.0	YM-B6.0
YM-A5.5	YM-C6.0
YM-B5.0	YM-B6.5
YM-B5.5	YM-C6.5
YM-A6.0	

### KAWASAKI

KW-A5.0	KW-A6.0
KW-B5.0	KW-D6.0
KW-C5.0	
KW-A5.5	
KW-B5.5	
KW-C5.5	

### TIGERSHARK

TS-A5.0	TS-B6.5
TS-A5.5	
TS-B5.5	
TS-A6.0	

### SEA-D00

MODEL	YEAR	ENGINE C.C.	O.D. (mm)	STOCK (Bone stock)	LIMITED (Add bolt-on parts)	MODIFIED (Major modifications)
LRV DI	02	951	155	SD-B6.0L	SD-B6.0L / SD-B6.5L	SD-B6.5L
LRV	00-01	951	155	SD-B6.0L	SD-B6.0L / SD-B6.5L	SD-B6.5L
GTX 4-TEC	02	1500	155	N/A	N/A	N/A
GTX DI	00-02	951	155	SD-B5.7L / SD-B6.0L	SD-B6.0L / SD-B6.5L	SD-B6.5L
GTX / GTX Ltd.	98-01	951	155	SD-B6.0L	SD-B6.0L / SD-B6.5L	SD-B6.5L
GTX RFI	98-02	782	140	SD-A6.2L	SD-A6.2L	-
GTX	96-97	782	140	SD-A6.0 / SD-A6.1	SD-A6.0 / SD-A6.1	SD-A6.5
GTX	02	951	155	SD-B6.0L	SD-B6.0L	SD-B6.5L
RX DI	00-02	951	155	SD-B6.0L	SD-B6.0L	SD-B6.5L
RX	00-01	951	155	SD-B6.0L	SD-B6.0L / SD-B6.5L	SD-B6.5L
GSX RFI	99-00	782	140	SD-A6.2L	SD-A6.2L	-
GSX Ltd.	98-99	951	155	SD-B6.0L	SD-B6.0L / SD-B6.5L	SD-B6.5L
GSX Ltd.	97.5	951	155	SD-B5.0	SD-B5.0 / SD-B5.5	SD-B5.5
GSX	96-97	782	140	SD-A6.0 / SD-A6.1	SD-A6.0 / SD-A6.1	SD-A6.5
XP / XP Ltd.	98-02	951	155	SD-B6.0L	SD-B6.0L / SD-B6.5L	SD-B6.5L
XP	96-97	782	140	SD-A6.0 / SD-A6.1	SD-A6.0 / SD-A6.1	SD-A6.5
XP	95	718	140	SD-A5.5	SD-A5.5	SD-A6.0 / SD-A6.1
Gti / Gti LE	02	718	155	SD-B5.7L	SD-B6.0L	SD-B6.5L
Gti	01	718	155	SD-B5.7L	SD-B6.0L	SD-B6.5L
Gti	96-00	718	140	SD-A5.5	SD-A5.5	SD-A6.0 / SD-A6.1
GTS	01	718	155	N/A	N/A	SD-B6.0L
GTS	97-00	718	140	SD-A5.5	SD-A5.5	SD-A6.0 / SD-A6.1
GTS	92-96	580	140	N/A	N/A	N/A
Gsi	97	718	140	SD-A5.5	SD-A5.5	SD-A6.0 / SD-A6.1
GS	97-01	718	140	SD-A5.5	SD-A5.5	SD-A6.0 / SD-A6.1
HX	95-97	718	140	SD-A5.5	SD-A5.5	SD-A6.0 / SD-A6.1
SPX	99	782	140	SD-A6.2L	SD-A6.2L	-
SPX	97-98	782	140	SD-A6.0 / SD-A6.1	SD-A6.0 / SD-A6.1	SD-A6.5
SPX	96	718	140	SD-A5.5	SD-A5.5	SD-A6.0 / SD-A6.1
SPi	93-94	580	140	N/A	N/A	N/A
SP	97	718	140	SD-A5.5	SD-A5.5	SD-A6.0 / SD-A6.1
SP	88-96	580	140	N/A	N/A	N/A

### YAMAHA

FX 140	02	1000	155	N/A	N/A	N/A
SUV 1200	99	1200	155	YM-B5.5	YM-B5.5 / YM-B6.0	YM-B6.0
SUV 1200	00-02	1200	155	YM-C6.0	YM-C6.0 / YM-C6.5	YM-C6.5
GP 1200	97-99	1200	155	YM-B5.5 / YM-B6.0	YM-B6.0 / YM-B6.5	YM-B6.5
GP 1200R	00-02	1200	155	YM-C6.0	YM-C6.0 / YM-C6.5	YM-C6.5
GP 800	98-00	800	144	YM-A5.0	YM-A5.0 / YM-A5.5	YM-A6.0
GP 800R	01-02	800	155		YM-C5.5 / YM-C6.0	YM-C6.0
GP 760	97-00	760	144	YM-A5.0	YM-A5.0 / YM-A5.5	YM-A6.0
XLT 1200	00-02	1200	155	YM-C6.0	YM-C6.0 / YM-C6.5	YM-C6.5
XL 1200	98-99	1200	155	YM-B5.5 / YM-B6.0	YM-B6.0 / YM-B6.5	YM-B6.5
XL 1200 Ltd	99-00	1200	155	YM-C6.0	YM-C6.0 / YM-C6.5	YM-C6.5
XLT	02	800	155		YM-C6.0	YM-C6.5
XL 800	00-01	800	155		YM-C6.0	YM-C6.0
XL 760	98-99	760	155	YM-B5.0	YM-B5.0 / YM-B5.5	YM-B5.5
XL 700	00-02	700	155	YM-B5.0	YM-B5.0 / YM-B5.5	YM-B5.5
WaveBlaster II	96-97	760	155	YM-B5.0	YM-B5.0 / YM-B5.5	YM-B5.5
WaveBlaster 701	96-97	701	144	YM-A5.0	YM-A5.0 / YM-A5.5	YM-A5.5
WaveBlaster 701/650	95 & earlier	701	144		YM-A5.0	YM-A5.5
WaveRaider 1100	95-96	1100	155	YM-B5.5	YM-B5.5 / YM-B6.0	YM-B6.0
WaveRaider 760	96 & earlier	760	144	YM-A5.5	YM-A5.5 / YM-A6.0	YM-A6.0
WaveRaider 701	96-97	701	144	YM-A5.0	YM-A5.0 / YM-A5.5	YM-A5.5
WaveRaider 701	95 & earlier	701	144	YM-A5.5	YM-A5.5 / YM-A6.0	YM-A6.0
WaveVenture 1100	96-97	1100	155	YM-B5.0 / YM-B5.5	YM-B5.5	YM-B6.0
WaveVenture 760	97	760	155	YM-B5.0	YM-B5.0 / YM-B5.5	YM-B5.5
WaveVenture 701	95-98	701	144	YM-A5.0	YM-A5.0 / YM-A5.5	YM-A5.5
SuperJet 701 / Ltd.	96-02	701	144	YM-A5.0	YM-A5.0 / YM-A5.5	YM-A5.5
SuperJet 701/650	95 & earlier	701/650	144		YM-A5.0	YM-A5.5
WaveRunner III 701	97 (65hp)	701	144		YM-A5.0	YM-A5.0

### KAWASAKI

Ultra 150	99-02	1176	136-157	KW-D6.0	KW-D6.0	-
Ultra 130 DI	01-02	1071	136-157	KW-D6.0	KW-D6.0	-
STX 1200R	02	1176	148	KW-C5.0	KW-C5.5	KW-C5.5
STX 1100	97-99	1071	148	KW-C5.0	KW-C5.0	KW-C5.5
STX 1100 DI	00-02	1071	148	KW-C5.0	KW-C5.0	KW-C5.5
STX 900	01-02	891	148		KW-C5.0	KW-C5.5
STX 900	97-00	891	140	KW-B5.0	KW-B5.0 / KW-B5.5	KW-B5.5
STS 900	01-02	891	140	KW-B5.0	KW-B5.0 / KW-B5.5	KW-B5.5
STX 750	98	743	140	KW-A5.0	KW-A5.0 / KW-A5.5	KW-A5.5
Zxi 1100	96-02	1071	148	KW-C5.0	KW-C5.5	KW-C5.5
Zxi 900	96-97	891	140	KW-B5.0	KW-B5.0 / KW-B5.5	KW-B5.5
Zxi 750	95-97	743	140	KW-A5.0 / KW-A5.5	KW-A5.5 / KW-A6.0	KW-A6.0
STS 750	95-97	743	140	KW-A5.0	KW-A5.0 / KW-A5.5	KW-A5.5
SS 750	92-97	743	140		KW-A5.0	KW-A5.0
ST 750	93-95	743	140		KW-A5.0	KW-A5.0
Xi Sport 750	98	743	140	KW-A5.0	KW-A5.0 / KW-A5.5	KW-A5.5
Xi 750	93-97	743	140	KW-A5.0	KW-A5.0 / KW-A5.5	KW-A5.5
Sxi Pro 750	98-02	743	140	KW-A5.0	KW-A5.0 / KW-A5.5	KW-A5.5
Sxi 750	95-96	743	140	KW-A5.0	KW-A5.0 / KW-A5.5	KW-A5.5
SX 750	92-96	743	140		KW-A5.0	KW-A5.0

### TIGERSHARK

TS1100L	99	1100	148	TS-B6.5	TS-B6.5	-
TS1100R	99	1100	148	TS-B5.5	TS-B5.5	-
Daytona 1000	97-98	1000	146	TS-A6.0	TS-A6.0	-
Monte Carlo 1000	97-98	1000	146	TS-A6.0	TS-A6.0	-
Daytona 770	96-99	770	146	TS-A5.5	TS-A5.5	TS-A6.0
Monte Carlo 770	96-99	770	146	TS-A5.5	TS-A5.5	TS-A6.0
TS770	98-99	770	146	TS-A5.5	TS-A5.5	TS-A6.0
Monte Carlo 640	97-98	640	146	TS-A5.0	TS-A5.0	TS-A5.5
Montego 640	97-98	640	146	TS-A5.0	TS-A5.0	TS-A5.5
Montego Deluxe 640	97-99	640	146	TS-A5.0	TS-A5.0	TS-A5.5

FUEL SYSTEMS  
ENGINE/GASKETS  
EXHAUST  
DRIVE LINE HANDLING  
ELECTRICAL  
WATERLINE /BILGE  
STEERING & CONTROLS  
BODY  
ACCESSORIES  
SERVICE TOOLS /HARDWARE  
CHEMICAL  
FREESTYLE & 800SXR  
FOUR STROKE



## DYNAFLY

All Around Performance

Impellers for High Power Applications. A new blade geometry is specially designed for high compression ratio jet pump system to achieve excellent holeshot acceleration, and top end performance. Impellers for Sea-doo 951cc pump and Kawasaki Ultra 150.



## XPROP

High Speed, High

Performance Impeller Series Solas Xprop gets you the most powerful drive in the water from advanced designs that incorporate a high compression hub design and cambered blades. Every novice, expert or Pro looking for speed and acceleration will use the Xprop.



## CONCORD

The Power Torque Series.

In 1998, Solas introduced Concord series of impellers featuring new radial leading edge with Solas innovative blade design. The Concord is designed to provide PWC lovers a different taste of blast-off and plenty of joys in hook-ups. "Feels So Good" could be your words to describe Concord. Especially in choppy water this unique impeller series will enhance your all-range maneuverability without slippage. On the other side of the water sport activity, for the customers looking for family fun, the Solas Concord series offers excellent weight carrying performance for those high power, heavy load, 4-seaters.



## SUPER CAMBER S-I-J-K-H

Benchmark of the Impeller Evolution. The patented Super Camber S-I-J-K-H series makes the hub and rubber seal more streamlined. Obviously, the form drag of an impeller will be reduced and flow volume of a jet pump will be increased at the same time. Hence, Solas Super Camber series S-I-J-K-H is still one of the best values in PWC market.

### Solas Impeller Seals

	Part No.
Kawasaki, All except KH	SL009
Yamaha YB Concord	SL008A
Yamaha YD Series	SL008AM
Yamaha YF Concord Series	SL009AL
Kawasaki KH, Sea Doo (All except SR)	SL007



## 1977-2006 KAWASAKI WATERCRAFT

Model	Year	Orig. Impeller	Pump Diameter	Stock Engine	Limited Engine	Modified Engine
STX-15F	04-06		148mm	KG-CD-1421	KG-CD-1421	KG-CD-1521
STX-12F	03-06	8/22	148mm	KG-CD-1218	KG-CD-1218	KG-CD-1319
1200 STX-R	02-06	13/23	148mm	KG-CD-1521	KG-CD-1521	KG-CD-1622
Ultra 150	99-06	13/18	Mixed	KH-DF-1620	KH-DF-1620	KH-DF-1721
1100 STX DI	00-03	8/23	148mm	KG-CD-1319	KG-CD-1319	KG-CD-1420
1100 STX DI	97-99	8/22	148mm	KG-CD-1319	KG-CD-1319	KG-CD-1420
1100 ZXi	96-03	7/20	148mm	KG-CD-1319	KG-CD-1319	KG-CD-1420
800 SXR	03-06	13/18	140mm	KP-DF-1322	KP-DF-1423	KP-DF-1524
750 Zxi	97	14/22	140mm	KE-CD-1116	KE-CD-1218	KE-CD-1218
	95-96	4/22	140mm	KE-CD-1116	KE-CD-1218	KE-CD-1218
750 Xi Sport	98-99	13/18	140mm	KE-CD-1116	KE-CD-1218	KE-CD-1218
750 Xi	97	13/18	140mm	KE-CD-1116	KE-CD-1218	KE-CD-1218
	96	13/18	140mm	KE-CD-1116	KE-CD-1218	KE-CD-1218
	93-95	8/16 5-blade	140mm	KE-CD-1116	KE-CD-1218	KE-CD-1218
750 Sxi Pro	98-02	9/17	140mm	KE-CD-0915	KE-CD-1116	KE-CD-1218
750 Sxi	95-96	9/17	140mm	KE-CD-0915	KE-CD-1116	KE-CD-1218
750 SX	92-95	14/19 alum.	140mm	KE-CD-0915	KE-CD-1116	KE-CD-1218
750 SS	97	12/17	140mm	KE-CD-0915	KE-CD-1116	KE-CD-1116
	96	12/17	140mm	KE-CD-0915	KE-CD-1116	KE-CD-1116
	92-95	14/19 alum.	140mm	KE-CD-0915	KE-CD-1116	KE-CD-1116
750 XIR	94	9/17	140mm	KE-CD-1116	KE-CD-1218	KE-CD-1218
750 STX	98	12/17	140mm	KE-CD-1116	KE-CD-1218	KE-CD-1218
750 STS	97	12/17	140mm	KE-CD-1116	KE-CD-1218	KE-CD-1218
	96	12/17	140mm	KE-CD-1116	KE-CD-1218	KE-CD-1218
	95	13/18	140mm	KE-CD-1116	KE-CD-1218	KE-CD-1218
750 ST	95	12/21	140mm	KE-CD-0915	KE-CD-1116	KE-CD-1218
	93-94	10/18 alum. 5-bl.	140mm	KE-CD-0915	KE-CD-1116	KE-CD-1218

### KE CONCORD

PITCH	PART NUMBER
09/15	KE-CD-0915
11/16	KE-CD-1116
12/18	KE-CD-1218
13/19	KE-CD-1320

### KG CONCORD

PITCH	PART NUMBER
12/18	KG-CD-1218
13/19	KG-CD-1319
14/20	KG-CD-1420
15/21	KG-CD-1521

### KH DYNAFLY

PITCH	PART NUMBER
16/20	KH-DF-1620
17/21	KH-DF-1721

### KP DYNAFLY

PITCH	PART NUMBER
13/22	KP-DF-1322
14/23	KP-DF-1423
15/24	KP-DF-1524

FUEL SYSTEMS  
ENGINE/GASKETS  
EXHAUST  
DRIVE LINE HANDLING  
ELECTRICAL  
WATERLINE /BILGE  
STEERING & CONTROLS  
BODY  
ACCESSORIES  
HARDWARE  
CHEMICAL  
FREESTYLE & BOOSXR  
FOUR STROKE

# 1987-2006 YAMAHA WATERCRAFT

Model	Year	Engine cc	Orig. Impeller	Pump Diameter	Stock Engine	Limited Engine	Modified Engine
VX110	06-07	1052	N/A	155mm	YH-CD-1824	YH-CD-1824	
FX Cruiser	03-04	998	N/A	155mm	YF-CD-1218	YF-CD-1319	YF-CD-1319
FX Cruiser H.O.	04-06	1052	N/A	155mm	YG-DF-1420	YG-DF-1420	
FX-140	02-04	998	N/A	155mm	YF-CD-1218	YF-CD-1319	YF-CD-1319
FX-140 H.O.	04-06	1052	N/A	155mm	YG-DF-1420	YG-DF-1420	
SUV 1200	99-04	1131	15.2	155mm	YF-CD-1218	YF-CD-1218	
XLT 1200	01-04	1176	15.6	155mm	YF-CD-1218	YF-CD-1319	YF-CD-1420
XL 1200 Ltd.	99-00	1176	15.2	155mm	YF-CD-1218	YF-CD-1319	YF-CD-1420
XL 1200	98	1176	13/19	155mm	YD-CD-1218	YD-CD-1218	YD-CD-1319
XLT 800	02-04	784	13.4	155mm	YF-CD-1114	YF-CD-1114	
XL 800	00-01	784	13.4	155mm	YF-CD-1114	YF-CD-1114	
GP 1300R	05-06	1296	16.3	155mm	YG-DF-1420	YG-DF-1420	
GP 1300R	03-04	1296	16.3	155mm	YF-CD-1319	YF-CD-1319	YF-CD-1420
GP 1200R	00-02	1176	15.6	155mm	YF-CD-1319	YF-CD-1319	YF-CD-1420
GP 1200	97-99	1131	16.5/19, 15.2	155mm	YD-SC-XO or YD-CD-1319	YD-SC-XO or YD-CD 1319	YD-CD-1420
GP 800R	01-04	784	13.2	144mm	YF-CD-1114	YF-CD-1114	
GP 800	98-00	784	15/21, 17.1	144mm	YB-CD-1418 or XO	YB-CD-1519 or XO	YB-CD-1619 or XI
GP 760	97-00	754	17/20	155mm	YB-CD-1317 or X	YB-CD-1418 or XO	YB-CD-1519 or XI
Raider 1100	95-96	1100	16/19	144mm	YD-CD-1218	YD-CD-1218	YD-CD-1319
Raider 760	96	760	7/20	144mm	YB-SC-I	YB-SC-I	YB-SC-J
Raider 701	94-95	701	17/20	144mm	YB-CD-1317, J	YB-CD-1418 or K	YB-CD-1519 or K
	96-97	701	13/16 al	144mm	YB-CD-1317 or I	YB-CD-1317 or J	YB-CD-1418 or K
Raider DLX	95	701	17/20	144mm	YB-CD-1317 or J	YB-CD-1418	YB-CD-1519 or K
Venture 700	95-96	701	17/20	144mm	YB-CD-1317, J	YB-CD-1317, K	YB-CD-1418, K
Blaster	93-96	701	15/18	144mm	YB-CD-1317, I	YB-CD-1317 or J	YB-CD-1418 or K
Pro VXR	93-94	701	15/18	144mm	YB-CD-1317, I	YB-CD-1317 or J	YB-CD-1418 or K
Super Jet	94-06	701	13/16 al	144mm	YB-CD-1317, I	YB-CD-1317 or J	YB-CD-1418 or K
	90-93	650	14/19 al	144mm	YB-CS-I	YB-SC-J	YB-SC-K

## YB CONCORD

## YB SUPER CAMBER

## YF CONCORD

## YD CONCORD

## YB X-PROP

PITCH	PART NUMBER
13/17	YB-CD-1317
14/18	YB-CD-1418
15/19	YB-CD-1519
16/20	YB-CD-1620

PITCH	PART NUMBER
14.5/18	YB-SC-I
14.7/18.5	YB-SC-J
15/19	YB-SC-K

PITCH	PART NUMBER
11/14	YF-CD-1114
12/18	YF-CD-1218
13/19	YF-CD-1319
14/20	YF-CD-1420

PITCH	PART NUMBER
12/18	YD-CD-1218
13/19	YD-CD-1319
14/20	YD-CD-1420

PITCH	PART NUMBER
15/18	YB-SC-X
16/19	YB-SC-XI

## YD SUPER CAMBER

PITCH	PART NUMBER
16/19	YD-SC-XO

## YH CONCORD

PITCH	PART NUMBER
18/24	YH-CD-1824

## YG DYNAFLY

PITCH	PART NUMBER
14/20	YG-DF-1420

# 1988-2006 SEA DOO WATERCRAFT

Model	Year	Engine cc	Orig. Impeller	Pump Diameter	Stock Engine	Limited Engine	Modified Engine
RXT	05-06	1494	n/a	159mm	SRX-CD-1318	SRX-CD-1419	SRX-CD-1520
RXP	04-06	1494	n/a	159mm	SRX-CD-1419	SRX-CD-1419	SRX-CD-1520
GTX 4-Tec Ltd SC	2004	1494	4-bi SS	155.8mm	SR-CD-1220	SR-CD 1321	SRX-CD-1321
GTX 4-Tec SC	03-04	1494	4-bi SS	155.8mm	SR-CD-1220	SR-CD-1220	SRX-CD-1321
GTX 4-Tec Wake	2004	1494	4-bi SS	155.8mm	SR-CD-1119	SR-CD-1220	SR-CD-1220
GTX 4-Tec	02-04	1494	4-bi SS	155.8mm	SR-CD-1119	SR-CD-1220	SR-CD-1220
RX-DI	01-03	951	14/21	155.5mm	ST-DF-1319	ST-CD-1520 or ST-DF-1319	ST-DF-1420 or ST-CD-1722
RX	00-02	951	14/21	155.5mm	ST-DF-1319	ST-CD-1520 or ST-DF-1319	ST-DF-1420 or ST-CD-1722
XP DI	03-04	951	14/21	155.5mm	ST-DF-1319	ST-CD-1520 or ST-DF-1319	ST-DF-1420 or ST-CD-1722
XP	00-02	951	14/21	155.5mm	ST-DF-1319	ST-CD-1620 or ST-DF-1319	ST-DF-1420 or ST-CD-1722
XP Ltd	98-99	951	13/21	155.5mm	ST-CD-1520	ST-CD-1520	ST-CD-1621
LRV/LRV DI	00-03	951	14/21	155.5mm	ST-CD-1419	ST-CD-1419	ST-DF-1520
GTX	00-03	951	14/21	155.5mm	ST-DF-1319	ST-CD-1520 or ST-DF-1319	ST-DF-1420 or ST-CD-1621
GTX DI	00-02	951	14/21	155.5mm	ST-DF-1319	ST-CD-1520 or ST-DF-1319	ST-DF-1420 or ST-CD-1621
GTX Ltd	98-99	951	13/21	155.5mm	ST-CD-1520	ST-CD-1520	ST-CD-1621
RXX	01-02	951		148mm	KG-CD-1521	KG-CD-1622	KG-CD-1622

## SRX CONCORD

## SR CONCORD

## ST CONCORD

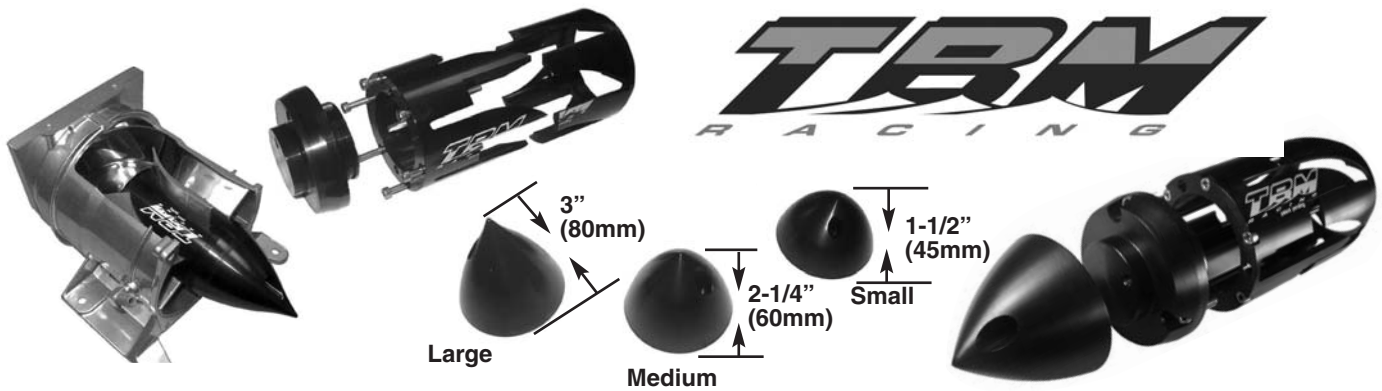
## ST DYNAFLY

PITCH	PART NUMBER
13/18	SRX-CD-1318
14/19	SRX-CD-1419
15/20	SRX-CD-1520

PITCH	PART NUMBER
11/19	SR-CD-1119
12/20	SR-CD-1220
13/21	SR-CD-1321

PITCH	PART NUMBER
14/19	ST-CD-1419
15/20	ST-CD-1520
16/21	ST-CD-1621
17/22	ST-CD-1722

PITCH	PART NUMBER
12/18	ST-DF-1218
13/19	ST-DF-1319
14/20	ST-DF-1420



## TBM RACING SUPER PUMP CONE "PRO" KAWASAKI 750/800

We have increased the hub diameter of the OEM pump, which creates an increase in pump pressure keeping the pump "loaded" in rough water conditions. The increased efficiency adds amazing acceleration, improved handling and top speed. The Super Pump Cone is designed to be used with the OEM, Solas Dynafly, or C-75 Skat-Trak impellers in standard, or a 5mm set back. Installation is as simple as changing an impeller and can be performed with standard tools. Fits '92-'07s Kawasaki 750/800 stand ups.

Included with our "Pro" kit is the Super Pump Cone insert, a tail cone base that seals the pump and three different length tail cone tips. The cone tips can be changed by simply removing one M6 bolt and replacing the tip with a different length to optimize your impeller and nozzle combination. The short cone works for Freestyle, Freeride and tight Closed Courses, while the medium and long tail cone works excellent for rough water hook up and amazing top speed.

<b>Kawasaki</b>	<b>Part No.</b>
Super Pump Cone (Kawasaki)	<b>TBM120</b>

## TBM RACING YAMAHA SUPER PUMP CONE

Our Yamaha Super Pump Cone will transform your inefficient OEM pump into a high performance large diameter hub race pump. It is not necessary to run a large hub impeller, so there is no need to purchase a new impeller to benefit from our Yamaha Super Pump Cone. We have designed our Yamaha Super Pump Cone to accommodate any diameter hub impeller. An OEM, standard aftermarket, or C-75 Magnum impeller will work with this set up.

Three sizes of our interchangeable tail cone tips are included with this kit. Outstanding for racing, freestyle or freeride applications. The Yamaha Super Pump Cone will work on any year Yamaha Super Jet, Wave Blaster and any other Yamaha watercraft models that utilize a Yamaha 144mm pump housing.

<b>Yamaha</b>	<b>Part No.</b>
Super Pump Cone (Yamaha)	<b>TBM120-YAM</b>

## SUPER PUMP CONE IMPELLER REFERENCE CHART FOR KAWASAKI 800 SX-R

Hot Products Set Back impellers are custom pitched to maximize performance and engine rpm for specific applications. These Solas Dynafly impellers are machined -5mm to set them closer to the pump vanes, which maximizes pump hook up. The impellers fit right into the stock SXR pump, with and without the TBM Super Pump Cone.

	<b>Rider Weight 100-150 Lbs. (4.5-68 Kg)</b>	<b>Rider Weight 150-200 Lbs. (68-91 Kg)</b>	<b>Rider Weight 200-250 Lbs. (91-114 Kg)</b>
<b>Stock Class Impeller</b>	SK4075SW0917 or KP-DF-1321SB*	SK4075SW0917 or KP-DF-1321SB*	SK4075SW0917 or KP-DF-1321SB*
<b>Stock Class Nozzle</b>	OEM 76mm	OEM 76mm	OEM 76mm
<b>Stock Class Closed Course Tail Cone Tip</b>	Medium or Large	Medium or Large	Small or Medium
<b>Limited Class Impeller</b>	SK4075SW1419 or KP-DF-1323SB*	SK4075SW1419 or KP-DF-1323SB*	SK4075SW1419 or KP-DF-1323SB*
<b>Limited Class Nozzle</b>	80mm	80.5mm	81mm
<b>Limited Class Closed Course Tail Cone Tip</b>	Medium or Large	Medium or Large	Small or Medium
<b>Open Class Impeller</b>	KP-DF-1424SB*	KP-DF-1424SB*	KP-DF-1424SB*
<b>Open Class Nozzle</b>	81.5 mm	82mm	82.5mm
<b>Open Class Closed Course Tail Cone Tip</b>	Medium or Large	Medium or Large	Small or Medium
<b>Free Style Impeller Tail Cone Tip</b>	KP-DF-1319B* Small	KP-DF-1319B* Small	KP-DF-1319B* Small

\* Indicates Impros -5mm set back Solas Dynafly impeller

## YAMAHA SUPERJET FREESTYLE IMPROS CUSTOM SOLAS SET BACK IMPELLERS

Hot Products Set Back custom pitched impellers are modified to maximize bottom end acceleration and hook up for your SuperJet. These Solas Concord impellers are set back -3mm and pitched to give your SJ explosive bottom end response, so you can get the most air out of your ski! These impellers work with the stock pump, with and without the TBM Super Pump Cone.

<b>Description</b>	<b>Part No.</b>
Stock/Ltd.13/15 Solas Concord -3mm	<b>YBCD1315SB</b>
Modified13/16 Solas Concord -3mm	<b>YBCD1315SB</b>

FUEL SYSTEMS  
ENGINE/GASKETS  
EXHAUST  
DRIVE LINE HANDLING  
ELECTRICAL  
WATERLINE /BILGE  
STEERING & CONTROLS  
BODY  
ACCESSORIES  
/HARDWARE  
CHEMICAL  
FREESTYLE & 800SXR  
FOUR STROKE



FUEL SYSTEMS  
ENGINE/GASKETS  
EXHAUST  
DRIVE LINE HANDLING  
ELECTRICAL  
WATERLINE/BILGE  
STEERING & CONTROLS  
BODY  
ACCESSORIES  
SERVICE TOOLS/HARDWARE  
CHEMICAL  
FREESTYLE & 800SXR  
FOUR STROKE



## ADJUST-A-THRUST

The only Automatic Transmission for PWC Jet Pumps  
Maximize Your Performance



In low gear the shuttle lets a large volume of water be moved to accelerate the craft.

As speed and pump pressure increase, the shuttle is forced out into the exit nozzle, reducing its size and increasing water velocity. This increases top speed.



Sea Doo



Yamaha



Kawasaki



Skat Trak SK 27

Sea Doo	Part No.
XP LTD, GSX LTD, GTX LTD, RX	SEA 2
4 Tec NA/SC 01-04, RXP, RXT	SEA 4

Kawasaki	Part No.
1100 ZXI/STX, STXR, STX12F/15F	KAW 1
All 650-800, SXI, SXI Pro, SXR 800	KAW 3

Yamaha	Part No.
SJ 90-04, WR111 91-97, GP700	YAM 1
VXR/VXR Pro, Blaster, B2, All Raider	
GP1200 97-99, Venture 1100, XL1200 98-99	
GPR 1200 99-02, XLT 1200 99-92	YAM 2
FX140, GPR1300, GP760, GP800	

Skat Trak Magnum Pump	Part No.
Skat Trak, Yamaha, Polaris Octane	SKT1
Skat Trak, Kawasaki/Sea Doo (75mm hub)	SK27

## WET WOLF FREESTYLE CONE



Freestyle cones are specially designed to maximize low end performance. The small design of the cone also lets the engine rev faster for a more powerful midrange hit. Perfect for Freestyle/Freeride, increases throttle response. CNC machined and Tuff-Coat anodized for superior corrosion resistance.

Yamaha	Part No.
A. Super Jet	FSYAM

Kawasaki	Part No.
B. 800 SXR, 750SX, SXI-Pro	FSKW3
C. Polaris Octane, Yamaha Magnum Pump	FSSKT1

Yamaha  
144mm Pump  
with  
End Bolt



## INTERCHANGEABLE PUMP CONE ROD FOR YAMAHA

Change the diameter of your exit nozzle with the Hot Products Pump Cone Rod. With one easy turn of a bolt you can adjust your exit nozzle diameter by interchanging the various rod sizes.

Yamaha	Part No.
Yamaha SJ, Wave Blaster, 701 Raider	54-3351



## R&D RXP / RXT PRO-SERIES REDUCTION NOZZLE

Our Pro-Series Reduction Nozzle is ideal for tuning your Sea Doo pump combination to maximize performance. Nozzle exit diameter can be easily changed via interchangeable ring system. Looking for more RPM or acceleration power? Insert a larger diameter ring. Want more top speed? Install a smaller diameter ring. Nozzle includes three precision-machined stainless steel rings (81/82/83mm) in graduated sizes. Additional ring sizes available.

Description	Part No.
SD RXP	RS23050-N
SD RXT (05-06), GTX-SC Ltd.	RS23051-N



## ADJUSTABLE EXIT NOZZLE AND NOZZLE RING KITS FOR SEA DOO 650/720/800

Our variety of interchangeable billet machined rings offer to find the maximum performance of the boat. Large ring for bottom-end acceleration and Small ring for top-end. Kit includes 83/85/87 mm rings.

Sea Doo	Part No.
Exit Nozzle with Billet Machined Nozzle Rings 83/85/87mm	54-3313



GTX 4-Tec



RXP

## R&D 2.5 DEGREE PUMP WEDGE KIT FOR SEA DOO

R&D 2.5 degree Pump Nozzle Wedge Kit will inexpensively give 4tec better handling everywhere and provide a boost of 1 to 2m mph in top speed performance. This kit works with the OEM O.P.A.S. system.

Sea Doo	Part No.
02-03 GTX 4-Tec SC / 03-05 GTX 4-Tec NA	143-95002
2.5 Degree Pump Wedge/Cable Extension Kit	
RXP Pump Wedge/Adjustable Trim Rod/Cable Extender Kit	143-95003
RXT/(04-05) GTX 4-Tec (185 & 215 HP Motor) Pump Wedge/Cable Extender Kit	143-95004
RXP Holeshoot Rod for use with R&D Auto Trim Nozzle part # 163-21502	163-21503



## GPR PERFORMANCE EXIT NOZZLE

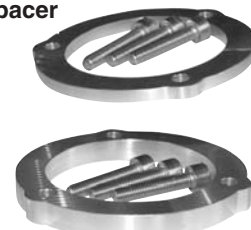
The new R&D GPR 87mm 6 vein 5 degree Exit Nozzle is now available. The water straightening veins inside the nozzle drastically reduce cavitation and increase nozzle head pressure and velocity. The 5 degree positive angle lightens the nose and adds top speed over any other nozzle. Specifically designed to maximize performance with a 13-19 or 14-20 prop.

Description	Part No.
GP1200R/GP1300R Performance Exit Nozzle	162-13587



Yamaha

Sea Doo Pump Cone Spacer



## R&D ANTI-CAVITATION CONE FOR YAMAHA & SEA DOO

The unique patent pending design balances the bowl pressure in the last stage of the pump to eliminate detectable cavitation. Improve bottom and punch midrange pull and overall performance.

Yamaha	Part No.
FX140 GP800R/GP1200R/GP1300R (all except 05)	162-12002
XL1200LTD, XLT800/1200	162-12003
H.O./2005 GP1300R, VX110	162-16000

Sea Doo	Part No.
GTX/RXT/RXP 185/215 HP (04-07)	163-95001
GTX 4-Tec/RXT Anti-Cavitation Pump Cone Spacer .200 (02-05)	163-95200
GTX 4-Tec RXT Anti-Cavitation Pump Cone Spacer .350 (02-05)	163-95350



## RIVA RXP/RXT/GTX-SC BILLET PUMP WEDGE

2-Degree wedge trims up your pump nozzle raising the bow of your craft for less drag and more control.

Sea Doo	Part No.
RXP, RXT, GTX-SC 2-Degree Pump Wedge	RS23050
RXP VTS Extension Rod	RS23050-ER

FUEL SYSTEMS	ENGINE/GASKETS	EXHAUST	DRIVE LINE HANDLING	ELECTRICAL	WATERLINE /BILGE	STEERING & CONTROLS	BODY	ACCESSORIES	TOOLS /HARDWARE	CHEMICAL	FREESTYLE & BOOSXR	FOUR STROKE
--------------	----------------	---------	---------------------	------------	------------------	---------------------	------	-------------	-----------------	----------	--------------------	-------------



**113-95001**  
**113-95002**

**Sea Doo RXP 215**

Blow through low and high-speed turns with confidence and chew up rough water conditions with new found top speed averages. Quicker acceleration and straightline stability are also increased.

Sea Doo	Part No.
98-99 XP LTD/00-02 XP/00-02 RX/00-03 RX DI/ RXX/03+ XP DI	113-00003
*for use with stock ride plate.	
01 GTS/01-05 GTI/02-05 GTI LE/ 04 GTI LE RFI/04-05GTI RFI/04-05 3D	113-00003
*for use with stock ride plate.	
02-04 GTX 4-TEC ALL MODELS	113-95000
02-03 GTX/951 DI, RXT	
RXP 215	113-95001
RXP 215 PRO 2 AQUAVEIN & GIRDLE KIT	113-95002
RXP 215 GIRDLE KIT Only	123-10010
GTI 06-07	113-95003



**112-70105**

**Super Jet Double Deep**

Designed to work with the R&D Stuffer and aluminum pump shoe. See page #86 (#112-70203)

Yamaha	Part No.
GP1200 97-99, XL 700/760. XL 1200 98	112-12000
GP760/800 98-00	112-70301
XL1200 LTD/XL 800/SUV/XLT 800 & 1200	112-12001
GP1200R/GP 1300R all	112-12002
GP800R All	112-00800
FX140/FX H.O.	112-14000
VX110	112-00110



**112-14000**

Aquavein will significantly reduce cavitation, increase acceleration, add up to 1 mph on top end performance, and keep the H/O pump loaded and hooked up!

**115-12002**  
**115-12003**



**Honda**

Aquavein Scoop Grate will reduce cavitation while increasing overall handling, straight-line stability and top speed performance. The R&D Aquavein will add 3 to 4 mph top speed average in choppy water conditions over the O.E.M. grate.

Honda	Part No.
R12X 1200 T2	115-12002
F12X 1200 T3	115-12003

Polaris	Part No.
All (Except 750/Hurricane)	114-65100
SL/SLT 50/Hurricane	114-75100

Sea Doo	Part No.
ALL Sp/SPX/SPI/GT/91-96 XP/94 XPI/ 92-95 GTX/92-00 GTS/96 GTI	113-00000
HX 95-97	113-72700
HX 95-97 PRO 2	113-72710
96-97 GSX/96-97 GTX/97 GSI/97-01 GS/ 97-01 GS/97-00 GTI/98-02 GTX RFI/99-00 GSX RFI	113-80400
97-99 GSX LTD/98-99 GTX LTD/ 00-02 GTX/00-01 GTX DI/00-01 LRV/02 LRV DI	113-80401
XP97	113-00001
98-99 XP LTD/00-02 XP/00-02 RX/ 00-03 RX DI/RXX/03+ XP DI	113-00002
*for use with R&D Ride Plate pt# 123-80620 (Aquavein has extended tabs that lock into the R&D Ride Plate to remove stress from stock inserts).	



**Super Jet Limited Race 112-70106**

Increased pickup area of the lowered rear chip. The lowered chip area also produces down force to the nose of the craft to reduce porpoising. The R&D Stuffer #112-70203 is also compatible with this design to add 1 1/2 to 2 mph additional speed.

Yamaha	Part No.
Super Jet	112-70102
Super Jet 96+ Double Deep PRO 2	112-70105
Super Jet 96+ Limited Race	112-70106
GP1200R (single bar)	112-12100
701 & 760 WaveRds/Rds Deluxe 701/Venture 95-96	112-70300
1100 WaveRdr/Venture, 97 760 Wave Venture, 98 Venture 701	112-11300



**111-80001**

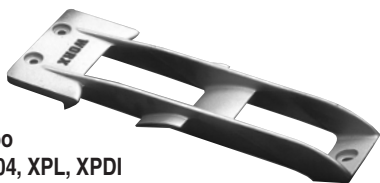
**Kawasaki 800SXR STEALTH**

The new R&D SXR 800 Stealth Aquavein delivers the ultimate in performance with maximum hookup, unmatched high speed stability, increased cornering (lean in angle) capabilities, and improved off-throttle braking performance.

Kawasaki	Part No.
440/550 all years	111-55100
650 SX/X2	111-65100
750 SX/SXI	111-75101
750 SXI Pro 98-02	111-75102
750/900/1100ZXI (99 only STX/pre 00-1100 STX)	111-75500
Ultra 150 All	111-15000
1200 STXR /15F Pro 2	111-12100
*for use with R&D Ride Plate #121-12001	
15F/12F/STXR/STXR DI	111-15001
*for use with stock or R&D Ride Plate pt#121-15100	
800 SXR STEALTH series	111-80001

FUEL SYSTEMS  
ENGINE/GASKETS  
EXHAUST  
DRIVE LINE HANDLING  
ELECTRICAL  
WATERLINE /BILGE  
STEERING & CONTROLS  
BODY  
ACCESSORIES  
SERVICE TOOLS /HARDWARE  
CHEMICAL  
FREESTYLE & 800SXR  
FOUR STROKE

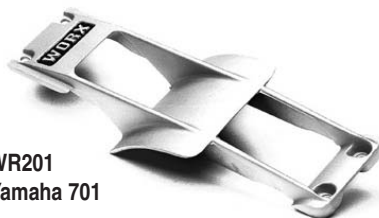
# WORX RACING COMPONENTS



**WR211**  
Sea Doo  
XP 97-04, XPL, XPDI

The Work grate gives the pump excellent loading in all water conditions, it will not cost you speed in the calm and make a night and day difference in choppy to rough conditions.

Sea Doo	Part No.
HX, GTS 93-01, GTX 93-95, GTI 93-97	<b>WR206</b>
SP/SPI/xp 92-96/SPX 96-97	<b>WR207</b>
GS, GSI, GSX, GTI 97-01, GTX 96-97, GTX RFI	<b>WR208</b>
XP 97-04, XPL, XP DI	<b>WR211</b>



**WR201**  
Yamaha 701

Improves hook-up and turning dramatically, it is a great rough water and surf riding intake grate because the pick-up area is wide and deep. It not only loads the pump, but it also allows you to ride hard up to a turn buoy. When you come off the throttle, the grate acts like a brake to slow you into a turn.

Yamaha	Part No.
701 Super Jet, W/Blaster I/II	<b>WR201</b>
701 Super Jet Pro Series (less aggressive than W201)	<b>WR205</b>
701 Super Jet Dominator Stuffer	<b>WR205D</b>
Raider 701/760, Venture 701, GP760/800	<b>WR213</b>



**WR219**  
Kawasaki  
STXR, 12F, 15F

The Worx intake grate gives a lot better hook-up in all conditions:

- No top speed loss
- Better pump loading in rough water
- Holds the boat on the water better, giving better control
- Better cornering as the Worx grate has two rails running the full length that hang down 12mm below the pump cavity and stop the boat sliding out

Kawasaki	Part No.
650 SX/X2	<b>WR202</b>
750 SX/SXI	<b>WR203</b>
750 SXI Pro	<b>WR203D</b>
440/550	<b>WR204</b>
All ZXI, STX 1100 98-99, STX 900 99	<b>WR209</b>
ULTRA 150, 130, DI	<b>WR215</b>

## WORX RACING MAXILOADER



**WR223**  
Sea Doo  
RXP 04-06

These boats hook up pretty well in the calm but really benefit from our intake grate in choppy to rough water. The worx grate will not cost you any top speed in the calm but will give you heaps better hook-up and drive in the rough and around the track for closed course racing. Similar to the WR221, this grate also has two bars running the full length of the boat that hang down and stop the back of the boat from sliding out, the centre blade of the grate does most of the work in the straights and the side wings come into play in the corners to keep the pump fully loaded and driving.

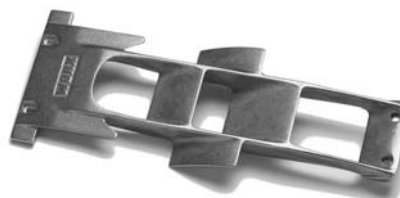
Sea Doo	Part No.
GSX LTD, GTX 98-01, GTX DI 01, GTX LTD	<b>WR212</b>
RX, GTS 01, GTI 02-04	<b>WR217</b>
GTX 4Tec 02-05, GTX Supercharged 03-04,	<b>WR221</b>
RXT/RXP 04-06 GTI,	<b>WR223</b>
GTI SE 06	<b>WR226</b>



**WR205**  
Yamaha  
701 Super jet Pro Series

This is a similar grate to the WR 201, only it is less aggressive and gives 1-2 MPH higher top speed but does not have the same braking effect that some people prefer. If you want top speed and usually ride in calmer water, this is the one for you.

Yamaha	Part No.
GP/XL1200, Raider 1100, Venture 760/1100	<b>WR214</b>
XL1200LTD, XLT 01	<b>WR216</b>
GP1200R/GP800R 00-03, GP1300R 03-04	<b>WR218</b>
FX140, FXHO	<b>WR224</b>



**WR225**  
Kawasaki  
800 SXR Dominator

**NEW**

The "NEW" WORX WR225 intake grate has twin central pickup vanes as well as the proven WORX side wings. This grate also has a wider and deeper pickup area at the back. The combined effect is more efficient pump loading in all water conditions and better hook-up and drive out of turns.

Kawasaki	Part No.
1200 STXR 00-04, STX12F 03, STX15F 04	<b>WR219</b>
800SXR 03-05	<b>WR222</b>
800 SXR 03-05 Dominator	<b>WR225</b>

Polaris	Part No.
All (Except Hurricane/Genesis)	<b>WR210</b>
Octane 02-04	<b>WR220</b>

FUEL SYSTEMS	ENGINE/GASKETS	EXHAUST	DRIVE LINE HANDLING	ELECTRICAL	WATERLINE /BILGE	STEERING & CONTROLS	BODY	ACCESSORIES	SERVICE TOOLS /HARDWARE	CHEMICAL	FREESTYLE & 800SXR	FOUR STROKE
--------------	----------------	---------	---------------------	------------	------------------	---------------------	------	-------------	-------------------------	----------	--------------------	-------------



RS22050



RS22055

### RIVA TOP LOADER INTAKE GRATE

Our top-loader intake grates for the RXP and GTX 4-TEC SC feature a unique tapered wing design that eliminates prop spin and cavitation while delivering enhanced acceleration and top-speed. Deep side rails improve stability and handling. Durable black race coating protects from corrosion. Race Legal.

Sea Doo	Part No.
RXP	RS22050
GTX 4-TEC. GTX 4-TEC SL RXT	RS22055

Yamaha	Part No.
FX140, FXHO	RY22325



### SKAT TRAK PUMP SHOE FOR KAW 800SXR

Our New Kawasaki 800 SX-R Pump Shoe to allow greater hook up in cornering and maximize water flow into the inlet.

Kawasaki	Part No.
800SXR	PRKAW800PS



112-70104

JD #36

### R&D PRO2 PUMP SHOE FOR SJ

The R&D Pro2 pump shoe is an all new cast aluminum design to replace the stock plastic unit which is prone to fail with a winged intake grate. The R&D shoe has a completely redesigned front entrance that feeds water into the pump more efficiently. Improves hookup, cornering, stability, rough water speed and overall handling.

Yamaha	Part No.
Super Jet 96+, R&D Pro 2 Pump Shoe	112-70104
Jet Dynamics Superjet 96+, OEM replacement Aluminum Pump Ring	JD #36



### TBM RACING SUPER SCOOP™

It's designed to enhance the handling characteristics of the SX-R and correct its one inefficiency, which is keeping the pump hooked up in hard corners. The Super Scoop™ keeps the pump loaded when the ski is on edge as is the case in hard cornering. We also treat each intake with a corrosion resistant coating.

Kawasaki	Part No.
800 SXR Super Scoop	TBM100

Hydrospace	Part No.
Hydrospace Super Scoop	TBM100-HS



Ultra 150 (#51)

### JET DYNAMICS SHAFT SHIELDING TOP LOADER (SST)

Kawasaki	Part No.
Ultra 150	Standard (#51) 54-6500



### SCOOP GRATES FOR KAWASAKI 440/550

Hot Products offers two open style intake grates for Kawasaki 440/550. Both designed to reduce drag and turbulence as water enters the pump area. These grates also improve turning. Available standard and deep.

Sea Doo	Part No.
K440/550 Standard Polished	54-6030
K440/550 Deep Polished	54-6035



2006 WORLD FINALS • LAKE HAVASU, AZ  
PHOTO COURTESY OF JIN OMURA



### Yamaha R&D PUMP PLUG KIT

Pump stuffer kit stuffs up all those unwanted cavities in the pump shoe that aid in producing cavitation. Reducing cavitation equals greater performance.

Yamaha	Part No.
GP1200R, GP800R, GP1300R	162-00000
XL1200LTD, XLT800/1200	162-00001
FX140, FX140 H.O.	162-00002
VX110	162-00110
Kawasaki	Part No.
750/800 Stand-up	161-80000
Ultra 250	161-25000
Honda	Part No.
R12X 1200 T2	165-00002
R12X 1200 T3	165-00003



### R&D HULL INSERTS KIT FOR GPR

These inserts are fixed together by an aluminum strap to insure they do not spin upon installation or removal of the ride plate or pump shoe. Simply silicone them in place and mount the ride plate or pump shoe.

Yamaha	Part No.
GP 1200R Ride Plate Insert	122-10000
GP 1200R Pump Shoe Insert	122-10010



### REPLACEMENT HULL INSERTS

Replacement for damaged or missing hull inserts that hold ride plates and intake grates in place.

Description	Part No.
Repair Kit (4)	54-7900



### DYNAMIC TABS FOR SUPER JET

These "Dynamic Tabs" will lower to stabilize your SuperJet. As the velocity decreases, this causes increased friction on the water. This results in better handling, and an increase in speed and performance.

Yamaha	Part No.
Super Jet 96+ Dynamic Tabs	05-004



### TRIM TABS FOR SEA DOO

- No more porpoising.
- Super lightweight but durable.
- Slightly textured for optimum water flow.

Sea Doo	Part No.
XP 96, SPX 97	BH-901



### WORX HULL EXTENSIONS

These hull extensions bolt right into factory mounting holes to effectively extend the working length of your boat by approximately 20%. The difference is very noticeable, you get on the plane quicker, no more porpoising in choppy water, your boat will run straight and true with no top speed loss.

Description	Part No.
XP (92-97), SPX (96-97)	WR304



### MOTOINE RACING CARBON RIDE PLATE

Kawasaki	Part No.
800SXR	MR-SXR-002

FUEL SYSTEMS
ENGINE/GASKETS
EXHAUST
DRIVE LINE HANDLING
ELECTRICAL
WATERLINE /BILGE
STEERING & CONTROLS
BODY
ACCESSORIES /HARDWARE
CHEMICAL
FREESTYLE & BOOSXR
FOUR STROKE



122-70102

**SUPERJET 96+ RUIS RIDE PLATE**

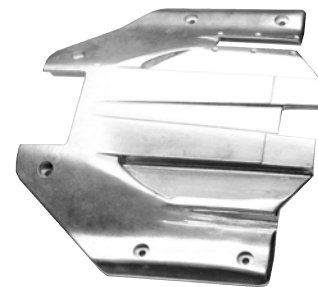


122-13000

**GP1300R RIDE PLATE**

The plate mounting surface has been raised and re-angled, producing quicker and more stable planing from 0-30 mph and smoother cruising at 50-60 mph. There is also more positive straight line stability and better high speed cornering.

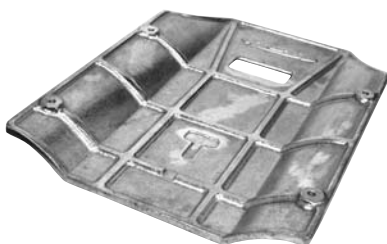
\* Requires a slight and simple modification to the reduction nozzle.



123-80620

**SEA DOO XPL/RX/RXX RIDE PLATE**

This Ride Plate features a redesigned bottom for improved straight line stability and superior cornering. The negative plain angle lightens the nose for up to 1 MPH more speed.



121-80000

**KAWASAKI 800SXR LIMITED RIDE PLATE**

This Ride Plate features a redesigned bottom for improving straight line stability and superior cornering. The cast aluminum design offers a negative plain angle that lightens the nose for up to 1 mph speed gain.



121-80001

**KAWASAKI 800SXR PRO SERIES RIDE PLATE**

This Ride Plate has a lower planing surface and an improved rear contour shape, reduced porpoising, increased high speed stability, improved traction and cornering. It also integrates with aftermarket pumps and drop nozzle systems.



121-15100  
121-15011

**KAWASAKI F15/F12 SPEED PLATE / OPTIONAL REVERSE GATE BRACKET**

This Ride Plate improves handling and adds up to 3 mph on top end speed. Optional reverse gate hardware kit available.



122-13001

**YAMAHA GP1200R/ GP1300R/GP800R RIDE PLATE TRIM PADS**

The Ride Plate Trim Pad design will promote smoother and quicker planing under aggressive 0-30 mph acceleration, produce an overall more stable ride, and has proven to have better top speed averages!

Yamaha	Part No.
Super Jet 90-95	122-70100
Super Jet 96+	122-70101
Super Jet 96+ Ruis Ride Plate	122-70102
GP 760/800/1200	122-12000
GP1200R/800R speed plate	122-12001
XLL 1200, XLT1200, XL800	122-12004
GP1300R speed plate	122-13000
GPR Ride Plate Trim Pad	122-13001
FX 140	122-14000
FX H.O.	122-16000

Sea Doo	Part No.
XP 800 97, XP-LTD 98+, RX, RXX	123-80620
3D Ride Plate	123-80621
580/650 X-Tender (except 3 seater)	123-00000
95 720/800 XP X-Tender Kit (with wings)	123-72600
96 800 XP/96-97SPX X-Tender Kit (with wings)	123-80600
96 800 XP/96-97 SPX X-Tender Plate	123-80610
95-96 720/800 XP Trim Wing (3 degrees only)	123-72621

Kawasaki	Part No.
750 SX/SXI 92-97 Pro Series Plate	121-75101
750/900/1100ZXI Pro Series Plate	121-75500
750SXI Pro 98-02 Pro Series Plate	121-75102
800 SXR 03-07 LTD Series Plate	121-80000
800SXR Pro Series Superstock Plate	121-80001
1200 STXR/1100	121-12000
STX DI/1200 STXF (for use with stock grate)	
1200 STXR/1100 STX DI/	121-12001
1200 STXF (for use with R&D Aquavein #111-12100	
F15/F12 Speed Plate (optional reverse gate bracket available)	121-15100
F15/F12 Reverse Gate Bracket Kit (for use with part #121-15100)	121-15011
Ultra 150, X-Tender Plate	121-15000

Polaris	Part No.
650/700/750/780SL	124-00100

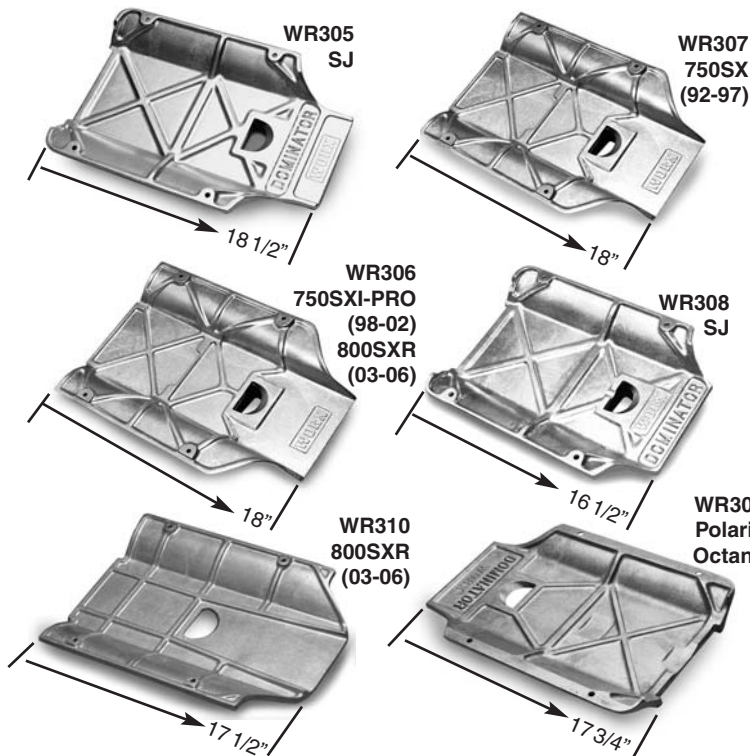
# WORX DOMINATOR "D" CUT-OUT RIDE PLATES

Not just for looks! The "D" cut makes a big difference in the handling in several ways.

1. It helps to hold the boat flatter in rough water and under initial acceleration, as the bow lifts the "D" cut out bites into the water pulling the boat back down which let's the pump get better hook-up and drive.
2. When you are cornering hard the "D" cut out keeps the boat more stable by allowing water to travel over the top of the plate through the cut-out.

## WORX Extended Length Ride Plates

Extended length ride plates hold the boat a lot flatter to the water and with the hard chine lines on the edges of the plate makes it a lot easier to carve those really tight turns while allowing more complete rider control.



**Jet Dynamics**

Yamaha	Jet Dynamics	Part No.
701 Super Jet Extra Long	(#DD-RP)	54-7462
Kawasaki		Part No.
650 X2	(#C-RP)	54-7472
750 SXI Pro/800SXR Extra Long	(#TT-RP)	54-7474
Ultra 150	(#U-RP)	54-7476

**NEW**



## TBM RACING "SIGNATURE SERIES" SX-R RIDE PLATE

Slightly longer than stock, our plate eliminates porpoising without sacrificing turning prowess. We've gone to great lengths to make our plate ideal for the Novice Stock class racer to the Seasoned Pro, inspiring the confidence to carry more speed into and out of corners.

Kawasaki	Part No.
800SXR, Powder Coated - Race	TBM123
800 SXR, Without Powder Coat - Standard	TBM123-S

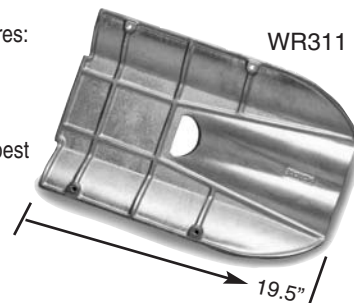
Hydrospace	Part No.
Hydrospace SX-R Ride Plate	TBM123-HS

**WORX**  
RACING COMPONENTS

## NEW DOUBLE CONCAVE DESIGN FOR THE KAWASAKI 800SXR

Combine all three features:

1. Wider rear section
2. Double concave
3. The "D" cut-out and you have the very best ride plate for your SX-R 800 through the longest turns.



Yamaha	Length	Part No.
Wave Blaster I (93-97) & II (96-97)	16 3/4"	WR301
Super Jet Dominator, Long	18 1/2"	WR305
Super Jet Free Style, Short	16 1/2"	WR308

Kawasaki	Part No.
750 SXI-Pro 98-02/800SXR 03-07	18" WR306
750 SX/SX 92-97 Extended	18" WR307
800SXR 03-07	17 1/2" WR310
800SXR 03-07 <b>NEW! Double Concave</b>	WR311

Polaris	Part No.
Octane 02-04	17 3/4" WR309

## JET DYNAMICS CONCAVE RIDE PLATES U.S. PATENT NO. 335.484



54-7476 Ultra 150



54-7462 Yamaha Superjet

**BLOWSION**



## BLOWSION CARBON RIDE PLATE KENNEY LIP RIPPER

Designed with feedback exclusively from Joe, Taylor Curtis and Clay Cullen this is quite simply the coolest ride plate for surf shredding available. Unique reverse "D" cutout generates wave carving turns to die for.

Yamaha	Part No.
SuperJet 96+	YASJC0699
Kawasaki 800 SXR	KASRC0699

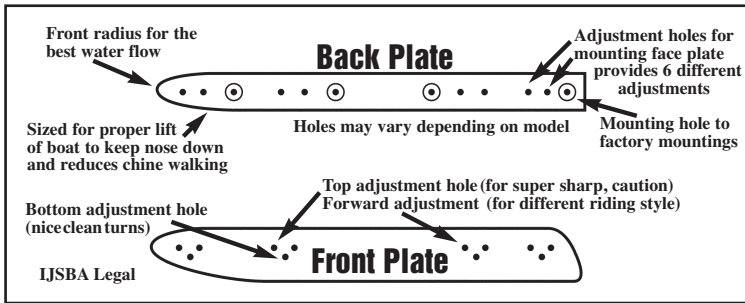
FUEL SYSTEMS  
ENGINE/GASKETS  
EXHAUST  
DRIVE LINE HANDLING  
ELECTRICAL  
WATERLINE /BILGE  
STEERING & CONTROLS  
BODY  
ACCESSORIES /HARDWARE  
SERVICE TOOLS  
CHEMICAL  
FREESTYLE & 800SXR  
FOUR STROKE



EXCLUSIVELY FROM HOT PRODUCTS



- 6 Different Adjustable Positions
- Bolts into OEM Factory Sponson Mounting Holes
- No Drilling Required



WHAT WILL BEACH HOUSE SPONSORS DO FOR YOU AND YOUR PWC?

Beach House sponsors will give you and your PWC better straight-line tracking during higher speeds or when pulling towables. You will be able to lean into the turn for a safer, more natural ride instead of leaning out the opposite direction on the turn. On models that need it, they will provide a little extra lift in the rear of the hull which will help keep the nose down, thus less bouncing.

WHY FULLY ADJUSTABLE?

Because everyone rides different, weighs different and rides on different water conditions.

1 A.M. - 4 A.M.

Deeper much more aggressive, possible drag and more lift. (drag depends on model, weight, aftermarket parts added, etc.) For closed course riding and those who like to ride aggressively or when pulling towables.



5 A.M. - 6 A.M.

Higher out of water, less aggressive, less drag and less lift. Still providing better than stock performance for offshore riding or for fast straight lines.



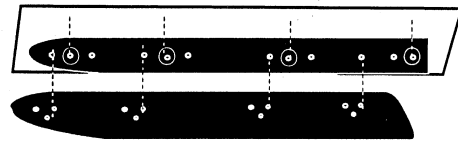
1 A.M. - 6 A.M. FRONT AND BACK HOLES

Every 1/4" can make a difference front to back. Forward gives a tighter turning radius for a more aggressive turn, once the turn is initiated it turn fast and immediately. The forward position also gives less lift to the back end of the boat putting less of the nose down into the water. Too far forward might be too grabby on sweeper turns. Once the turn is initiated it can be changed a little easier than if it were further forward. This position also gives more lift to the back end of the boat putting more of the nose in the water (too much lift can make the boat dive into the turn).

6 A.M. (Adjustable Mount) SPONSORS

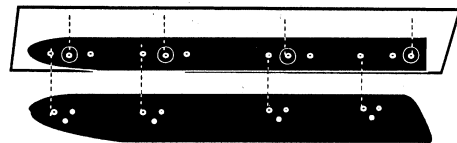
Most Aggressive Position

1 A.M.



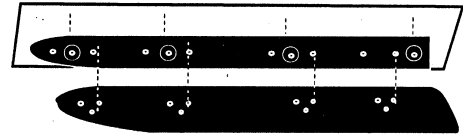
2nd Most Aggressive Position

2 A.M.



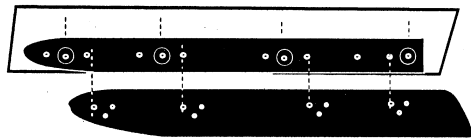
Overall Performance & Handling

3 A.M.



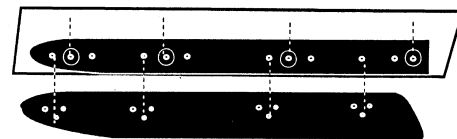
Overall Performance & Handling

4 A.M.



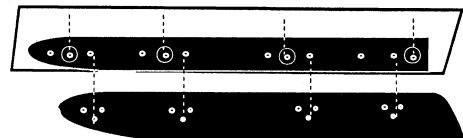
2nd Least Aggressive

5 A.M.

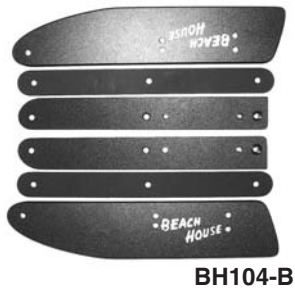


Least Aggressive

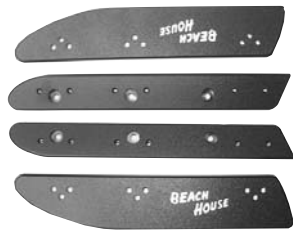
6 A.M.



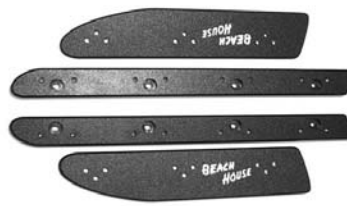
Sea Doo	6 A.M. SPONSONS	Color
BH101-B	SPX 94-99, SP/SPI 93-98, XP 93-96	Black
BH102-B	GT/GTI 92-96, GTS 94-00, GTX 94-95	Black
BH102-W	GT/GTI 92-96, GTS 94-00, GTX 94-95	White
BH103-B	GSX All, GSXL/RFI 98-01, GSI 97-98, GS 97-01	Black
BH104-B	XP/XPL 97-02	Black
BH105-W	GTXL, GTX DI 01, GTX RFI 98-02, GTX 96-02 (not 4-Tec), GTI, GTI LE 97-01	White
BH106-B	RX, RX DI, RXX	Black
Yamaha	6 A.M. SPONSONS	Color
BH205-B	XLT1200L 01-early 02, XL/XLT 800 01-early 02	Black
BH206-B	GP800R 01-02, GP1200R 00-02	Black
Polaris	6 A.M. SPONSONS	Color
BH402-B	Pro785 99-01, SLX Pro 98/SL785 Pro 97, Pro1200 -01	Black



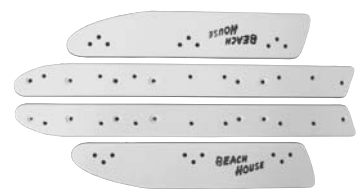
BH104-B



BH206-B



BH304-B




BH306-W

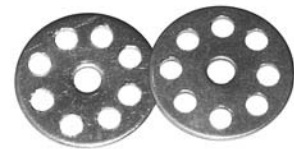


Kawasaki	6 A.M. SPONSONS	Color
BH301-W	STX750 97-98, XI 95-99, XIR 94-95, STS 96-97	White
BH302-B	ZXI 95-97, STX1100 97-99, STX750 99	Black
BH303-W	900STS 01-02, 900STX 97-00, 1100ZXI 98-02	White
BH304-B	Ultra150 99-02, Ultra130 DI 02	Black
BH305-W	STX900 01-02, STX1100 DI 00-02, 12F 03-06, 15F 03-06	White
BH306-W	STX-R 02-05	White
Tigershark	6 A.M. SPONSONS	Color
BH502-B	TS770R 99, TS100R 99	Black
BH502-W	TS770R 99, TS100R 99	White

### BEACH HOUSE LARGE WASHER



Developed to assist in preventing cracking or sponson failure by distributing the extreme pressure to a larger surface area developed when cornering. The washers are compatible with all model sponsons made by Beachhouse and the other manufacturers.



Description	Part No.
Stainless Steel Large Washer (Sold individually)	NO1 * Sold Each. Thickness 1.5 mm

## STIX BEACH HOUSE SPONSONS

Designed by racers and made for racing. Installation does not use the OEM mounting holes if applicable and requires drilling of new mounting holes.

### SX203-B



Yamaha	Part No.
GP760/800/1200 97-00	SX202-W (White)
Pro Slalom Series With Short Face Plates*	SX202-B (Black)
These sponsons perform the best in smooth water conditions	
Super Jet	SX203-B



Drilling Required



### SX301-B

Kawasaki	Part No.
750SX/SXI/SXI Pro (Race Legal)	SX301-B

FUEL SYSTEMS
ENGINE/GASKETS
EXHAUST
DRIVE LINE HANDLING
ELECTRICAL
WATERLINE /BILGE
STEERING & CONTROLS
BODY
ACCESSORIES /HARDWARE
CHEMICAL
FREESTYLE & BOOSXR
FOUR STROKE

FUEL SYSTEMS  
ENGINE/GASKETS  
EXHAUST  
DRIVE LINE HANDLING  
ELECTRICAL  
WATERLINE /BILGE  
STEERING & CONTROLS  
BODY  
ACCESSORIES  
SERVICE TOOLS /HARDWARE  
CHEMICAL  
FREESTYLE & 800SXR  
FOUR STROKE



## R&D G-FORCE SPONSONS



2-position back plate (forward or backward) and 3-position (depth) sponson blade adjustability.

Sea Doo	Part No.
RXP/GTX-4TEC 03-04	123-95100
05 GTX, GTI/RXT/RXP 06	123-95101



2-position back plate (forward or backward) and 3-position (depth) sponson blade adjustability.  
\*(GP1300R 3-position and 6-position depth backplate)

Yamaha	Part No.
GP1200R, GP800R	122-12100
GPR1300R	122-13100
FX140/FX H.O.	122-00140



More predictable handling characteristics while retaining the benefits of the off-throttle O.P.A.S. system. Precision machined composite collars prevent the O.P.A.S. fins from dropping when the pump is out of the water in choppy conditions.

Sea Doo	Part No.
R&D GTX 4TEC O.P.A.S.	123-95000
Off shore Kit	
R&D GTX 4TEC/RXT O.P.A.S.	123-95001
Closed Course Kit	
RIVA RXT/GTX	RS-29055
Competition O.P.A.S. Kit	



Kawasaki	Part No.
1200 STXR/STX/STX DI	121-12100
F15/F12	121-21500



Kawasaki	Part No.
800SXR Rear Sponsons	121-00800



Honda	Part No.
R12X 1200 T2	125-21200
F12X 1200 T3	125-31200

## WORX RACING COMPONENTS

Fitting WORX sponsons to your PWC is like fitting extra wide tires to your road car. Unbelievable cornering, better control in the rough and predictable inline tracking while towing wakeboards or waterskiers. WORX sponsons are easy to fit, look great and bolt right into stock mounting holes.

## WORX SPONSONS



WR515



WR533



WR527



WR534

Sea Doo	Part No.
GS, GSI, GSX, GSX LTD, GSX RFI	WR505
HX All	WR506
SP 92-96, SPI, XP, SPX 96-97 Pro Race	WR510
XP 97-04, XP LTD, XP DI, 3D	WR515
GTX 97-01, GTX LTD, GTX RFI, GTI 96-01	WR517
GTX 93-95, GTS 96-01	WR518
ALL RX, RXX, RX DI	WR521
GTX 4Tec 02-04, GTX S/C 03-04, RXP 04	WR526
GTX, RXP, RXT 05 More Aggressive	WR534
Aggressive Spacer Kit for WR526, WR532	WR535S

Polaris	Part No.
All except Hurricane SLX/Pro, Genesis, MSX	WR509
All SLX 785 Pro	WR516

Honda	Part No.
R-12, R-12X	WR530
F-12, F-12X, F-12 GP Scape	WR531

Yamaha	Part No.
Wave Raider (all)	WR507
GP760/800/1200	WR511
Wave Venture 96-98, XL1200 98, XL700/760 98-03	WR514
XL1200 LTD 99-00, XL800 00-01	WR520
GP800R/GP1200R 00-04, GP1300R 03-04	WR522
XLT1200 01-03, XL800 02-03	WR524
FX 140, FX 140 H.O., FX160, VX110	WR529
GP1300R 2005	WR533

Kawasaki	Part No.
ZXI750/900/1100 (all)	WR508
750/900STX 99, 1100STX 98-99	WR513
ULTRA 150, 130 DI	WR519
STX1100 00 & up	WR523
1200STXR All	WR525
STX900/1100DI, STX 12F/15F	WR527
800 SXR All, 750SX, 750SXI, 750 SXI Pro	WR528



## RIVA RACING SPONSONS



**RY2601**  
Super Jet Rear

**Yamaha** **Part No.**  
Super Jet Pro Series (Rear Sponsons) **RY2601**



**RY2620-1**  
GP1200R

**Yamaha** **Part No.**  
GP800R/GP1200R/GP1300R **RY2620-1**



**Yamaha** **Part No.**  
FX140/FX140 H.O.  
FX160/VX110 **RY2625**



**Sea Doo** **Part No.**  
RXP/RXT/GTX **RS26050**



**Kawasaki** **Part No.**  
STX-12-F/15F Pro Series **RK26085**



## TBM 800 SXR REAR SPONSONS

TBM Racing SX-R 800 Rear Sponsons are the original sponsons used by Team Kawasaki for the 2003 World Finals and throughout the 2004 season.

**Kawasaki** **Part No.**  
800 SXR **TBM101**

**Hydrospace** **Part No.**  
Hydrospace Rear Sponsons **TBM101-HS**



## RXP PRO-SERIES OPAS BLOCK-OFF KIT

Optimizes RXP's handling characteristics. Extensions fill voids dramatically improving handling and reducing porpoising. For competition use only.

**Sea Doo** **Part No.**  
RXP **RS29950**



## RXP/RXT/GTX-SC PERFORMANCE OPAS BLOCK-OFF KIT

Improves handling characteristics for competition use. Necessary to accommodate RIVA Rear Exhaust Kit.

**Sea Doo** **Part No.**  
RXP/RXT/GTX-SC **RS29050-1**



## TUBBIE SPONSONS

This Race Model Tubbie Two (Part # AWC0213) grips better in turning and is more stable in straight line high speed riding. The Rec/Freeride model (Part#AWC0212) is very stable, but has some nose wandering at mid throttle due to the curved chine riding back and forth on the bow wave. This is very beneficial in freeriding as the ski is able to be more forgiving and reacts better to a variety of directions and water flow angles.

**Description** **Part No.**  
A. Tubbie 1 – Rec-Surf-Freeride-Freestyle **AWC0212**  
B. Tubbie 2 – Race Model Only **AWC0213**  
Tubbie 3 - Race Hybrid (SX-R/Hydrospace-Race) **AWC0214**

FUEL SYSTEMS	ENGINE/GASKETS	EXHAUST	DRIVE LINE HANDLING	ELECTRICAL	WATERLINE /BLIGE	STEERING & CONTROLS	BODY	ACCESSORIES /HARDWARE	SERVICE TOOLS	CHEMICAL	FREESTYLE & 800SXR	FOUR STROKE
--------------	----------------	---------	---------------------	------------	------------------	---------------------	------	-----------------------	---------------	----------	--------------------	-------------

# DRIVELINE PARTS FOR SEA DOO



A.



B.

## SEAL HOUSING CARRIER

Sea Doo	Part No.
A. 580/650 All OEM#272-000-024	003-115
B. 720/800 All OEM#272-000-012	003-116



SEA DOO DRIVESHAFT SEAL



## PUMP HOUSING BEARINGS AND SEALS FOR SEA DOO

Sea Doo	Description	OEM No.	Part No.
All Models	PTO/Front Seal	293-200-025	009-730
All Models	Driveshaft/Rear Seal	293-200-012	009-730
580/650/720 All	All Seal Carrier Bearing	293-350-007	54-3135



C.

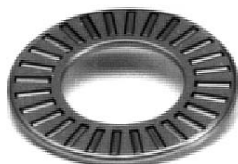


D.

## SEAL CARRIER COMPLETE ASSEMBLIES

Comes with bearings and seals installed.

Sea Doo	Part No.
C. 560/650 All	003-115-01
D. 720/800 All	003-116-01



SEA DOO THRUST BEARINGS



## PUMP HOUSING BEARINGS AND SEALS

Sea Doo	Description	OEM No.	Part No.
580/650/720/800	Pump Seal	293-200-025	009-730
580/650/720/800	Pump Shaft Needle Bearings	293-350-001	54-3130
580/650/951 (1997)	Thrust Bearings	293-350-002	54-3132
720/800/951 (98-01)	Thrust Bearings	293-350-019	010-228-02
951 Late	Thrust Bearings	213-350-022	010-228-03
580/650	Pump Seal & Bearings Repair Kit		003-640
720/800	Pump Seal & Bearings Repair Kit		003-641
580/650/720/800	Pump O-Ring	293-200-011	008-641
		293-200-013	008-642



## SEA DOO COUPLER RETAINER

Hot Products precision machined thermal fit coupler retainer, holds coupler in casing and prevents shaft damage.

Sea Doo	Coupler	Part No.
HX 96+	Front	54-1152
XP 97	Front/Rear	54-1152



## CARBONE RING

Sea Doo	Part No.
720 HX 95, All Models 96-97 OEM#272-000-042	003-110



## THRU HULL REPAIR FITTING FOR SEA DOO IMPELLER SHAFT

Sea Doo	Part No.
All Models OEM#292-000-075	011-112



54-3140

## REPLACEMENT PUMPSHAFT

Sea Doo	Description	Part No.
580/650/720/800	271-000-291	54-3140
951 97-98	271-000-886	003-108
951 99-01*	271-000-965	003-111



## IMPELLER SHAFT THRUST WASHER

Sea Doo	Part No.
580/650/720 All OEM#293-350-003	003-099

\*033-111 Length=5 3/4" Thread O.D.=11/16"  
Uses Larger I.D. Thrust Washer  
(010-228-03)



003-500



003-503



### RIVA RXP/RXT SS REPLACEMENT WEAR RING

Replaces original plastic unit with easy press in installation. Durable stainless steel resists debris damage and saltwater corrosion

Sea Doo	Part No.
Replacement Wear Ring	RS33-159-SRX



### PUMP WEAR RING WITH STAINLESS SLEEVE

Sea Doo	Part No.
2-Stroke before '98 (stainless liner)	003-504

### REPLACEMENT PUMP WEAR RINGS FOR SEA DOO

Sea Doo	Part No.
580/650/720/800 Wear Ring 951	003-500
1998 Up including 4-Tech (Non-Supercharged)	003-503
4-Tech Supercharged 03-04	003-501
	003-502



003-125-02



003-129

### SEA DOO PTO ENDS

Sea Doo	Part No.
Lightweight 580/650/720 951	003-125-02
	003-129



### DRIVE SHAFT BUMPERS

Sea Doo	Part No.
560/650/720 All (sold in pairs) OEM#292-000-019	003-350



### REPLACEMENT DRIVE SHAFTS FOR SEA DOO



003-152



003-154



003-159



003-163



003-168

Sea Doo	Year	OEM#	Part No.
580 GTS, SP, SPI, 720 GTI, GTS	96	272-000-073	003-154
720 GS	97-98	272-000-096	003-152
720 GSI	97	272-000-096	003-152
720 HX	95-97	272-000-009	003-163
720 SP	97	272-000-073	003-154
720 SPX	96	272-000-073	003-154
800 GSX	96-97	272-000-096	003-152
800 GSX (RFI)	99-01	272-000-096	003-152
800 SPX	97-99	272-000-096	003-152
800 XP	96	272-000-096	003-152
800 XP	97-98	272-000-009	003-163
951 GSX	98	272-000-151	003-159
951 GSX LTD	99	272-000-151	003-159
951 GTX LTD	98-99	272-000-160	003-168
951 GTX, GTX DI, LRV	00-01	272-000-160	003-168
951 RX, RX DI	00-01	272-000-151	003-159
951 XP	98-00	272-000-150s.s.	003-168

FUEL SYSTEMS  
ENGINE/GASKETS  
EXHAUST  
DRIVE LINE HANDLING  
ELECTRICAL  
WATERLINE /BILGE  
STEERING & CONTROLS  
BODY  
ACCESSORIES /HARDWARE  
CHEMICAL  
FREESTYLE & BOOSXR  
FOUR STROKE

# DRIVE LINE PARTS FOR YAMAHA



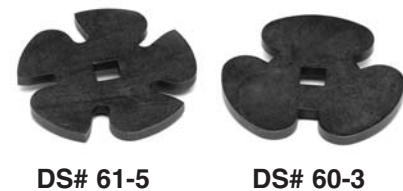
## JET PUMP HOUSING WITH REPLACEMENT WEAR RING FOR YAMAHA



Yamaha	Part No.
650 Super Jet 90-93	003-507
650 VXR 91-95	003-507
701 Super Jet 95-01	003-507
701 Wave Blaster 93-96	003-507
650 Wave Runner 92-93, 96	003-506
701 Wave Runner III GP 94-95	003-506
701 Wave Raider 94-97	003-506
701 Wave Raider DX 95	003-506
701 Wave Runner III 97	003-506

Yamaha	Part No.
701 Wave Venture 95-96	003-506
760 GP 97-00	003-506
760 Wave Raider 96	003-506
800 GP 98-00	003-506
701 Wave Venture 98	003-505
701 Wave Venture XL 99-01	003-505
760 Wave Venture 97	003-505
1100 Wave Venture 96-97	003-505
1100 Wave Raider 95-96	003-505
1200 GP 97-99	003-505
1200 XL 98	003-505

Replacement Rings (sold each)	Part No.
Fits 003-506 and 003-507 (144mm)	003-521
Fits 003-505 (155mm)	003-520



### YAMAHA COUPLER SHAFT

### DRIVE COUPLER WRENCH

### BILLET DRIVE COUPLER SET

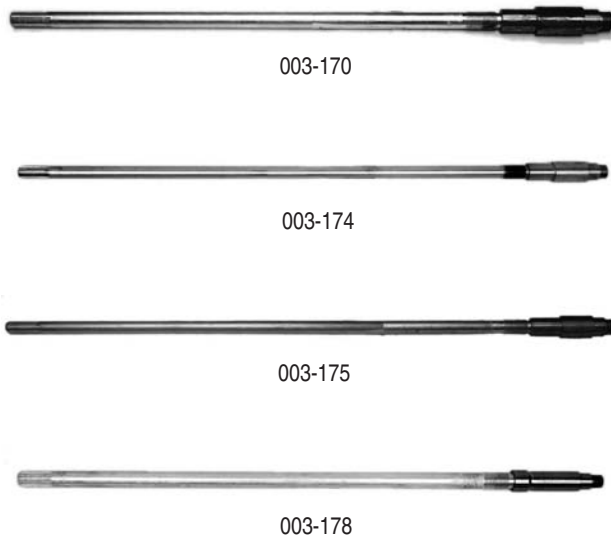
Yamaha	Part No.
650 SJ, VXR 9109	003-250
701 Blaster 93-96, 650 WR III	003-250
701 SJ 95-03, 701 VXR 93-94	003-250
701 Venture 95-96, 98	003-251
701 XL 99, 01	003-251
760 Venture 97	003-251
760 XL 98-00	003-251

Yamaha	Part No.
144mm Pump	DS#60-3
155mm Pump	DS#61-5

Yamaha	Part No.
A. All Yamaha (except 63M/66E/66V) "Kawasaki Dampener Type"	54-1129
A. R&D Yamaha Coupler "Kawasaki Dampener Type"	612-70300
B. GP1200R, XLL1200	612-12000



## REPLACEMENT DRIVE SHAFTS FOR YAMAHA



Yamaha	Year	OEM#	Part No.
650 SJ	90-93	6R7-45511-01-00	003-170
701 Raider/Wave Runner III	94-97	6R8-45511-00-00	003-174
701 SJ	95-01	6R7-45511-01-00	003-170
701 Wave Venture	95-96	6R8-45511-00-00	003-174
701 Wave Venture	98	65R-45511-00-00	003-175
701 XL	99-01	65R-45511-00-00	003-175
760 Wave Raider	96	6R8-45511-00-00	003-174
760 Wave Venture	97	65R-45511-00-00	003-175
760 XL	98-99	65R-45511-00-00	003-175
800 GP	01	66V-45511-00-00	003-178
800 XL	00-01	66V-45511-00-00	003-178
1200 GP	00-01	66V-45511-00-00	003-178
1200 SUV	99-01	66V-45511-00-00	003-178
1200 XL	99-00	66V-45511-00-00	003-178

# SHAFT HOUSING BEARINGS AND SEALS FOR KAWASAKI



003-107



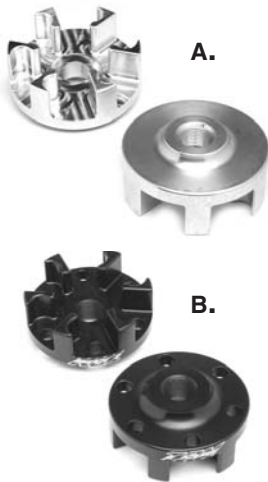
003-109



550SX, 650SX, 750SX, 900ZXI, 1100ZXI

## REPLACEMENT PUMPSHAFT

Kawasaki	OEM No.	Part No.
All 650 (All except ZXI)	13107-3721	<b>003-107</b>
750/900/1100 ZXI	13107-3737	<b>003-109</b>



## BILLET DRIVE COUPLER SET

Kawasaki	Part No.
A. 750SS 94-97, XI 93-97, ZXI 95-97 SXI 95-97, 800SXR	<b>KA800DCS</b>
B. TBM 800SXR Light Weight	<b>TBM103</b>

## SHAFT HOUSE BEARINGS AND SEALS FOR KAWASAKI

Kawasaki	Description	OEM No.	Part No.
440/550-90	Driveshaft Seal (4pcs/pk)	<b>92050-501</b>	<b>54-3203</b>
440/550-90	Driveshaft Bearings		<b>54-3103</b>
440/550-90	Driveshaft Seal & Bearings Repair Kit		<b>54-3003</b>
550SX 91-95	Driveshaft Seal		<b>54-3227</b>
650/750/900/1100 All			
550SX 91-95	Driveshaft Bearings		<b>54-3127</b>
650/750/900/1100 All			
550SX 91-95	Driveshaft Seal & Bearings Repair Kit		<b>54-3027</b>
650/750/900/1100 All			
440	Pump Seal Kit	<b>92050-502/503</b>	<b>54-9203</b>
750/800	Jet Pump Repair Kit		<b>54-8000</b>



## DRIVE SHAFT BEARING HOUSING

Kawasaki	Part No.
550SX 91-95	<b>003-405</b>
650/750/900/1100/ All	



003-161-01



003-161-02

## WSM OEM REPLACEMENT DRIVE SHAFTS FOR KAWASAKI PWC



Kawasaki	Year	OEM#	Part No.
750 SS	96-97	39159-3717	<b>003-161-01</b>
750 SSXI	93-97	39159-3717	<b>003-161-01</b>
750 ST	94-95	39159-3717	<b>003-161-01</b>
750 STS	95-97	39159-3717	<b>003-161-01</b>
750 STX	98	39159-3717	<b>003-161-01</b>
750 XI	98-99	39159-3717	<b>003-161-01</b>
900 STS	01	39159-3732	<b>003-161-02</b>
900 STX	99-01	39159-3732	<b>003-161-02</b>
1100 STX	97-01	39159-3732	<b>003-161-02</b>

FUEL SYSTEMS  
ENGINE/GASKETS  
EXHAUST  
DRIVE LINE HANDLING  
ELECTRICAL  
WATERLINE /BILGE  
STEERING & CONTROLS  
BODY  
ACCESSORIES  
/HARDWARE  
CHEMICAL  
FREESTYLE & 800SXR  
FOUR STROKE